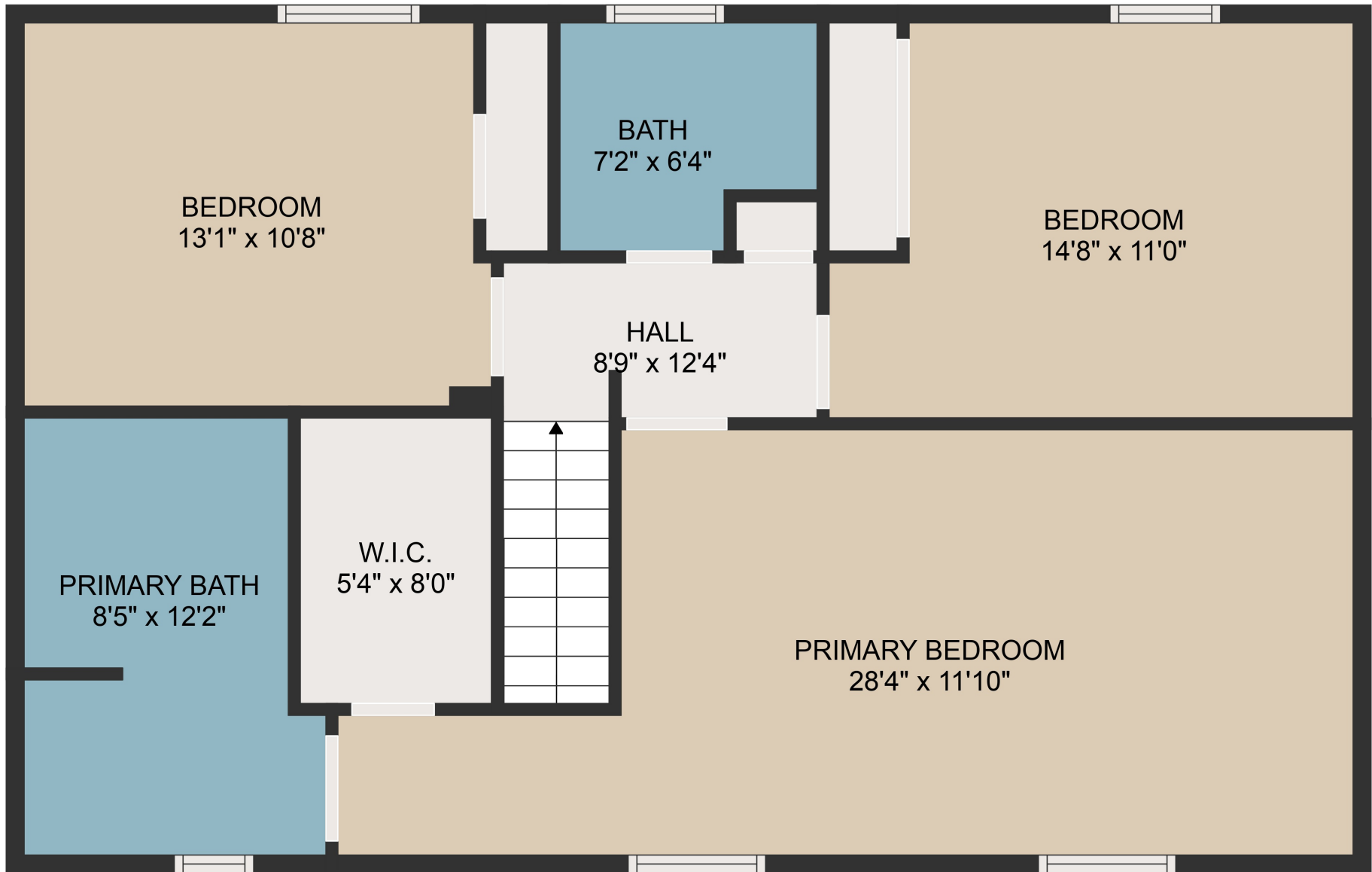


TOTAL: 2479 sq. ft
 Below Ground: 788 sq. ft, FLOOR 2: 829 sq. ft, FLOOR 3: 862 sq. ft
 EXCLUDED AREAS: GARAGE: 372 sq. ft

MEASUREMENTS ARE DEEMED HIGHLY RELIABLE BUT NOT GUARANTEED.



TOTAL: 2479 sq. ft

Below Ground: 788 sq. ft, FLOOR 2: 829 sq. ft, FLOOR 3: 862 sq. ft
EXCLUDED AREAS: GARAGE: 372 sq. ft

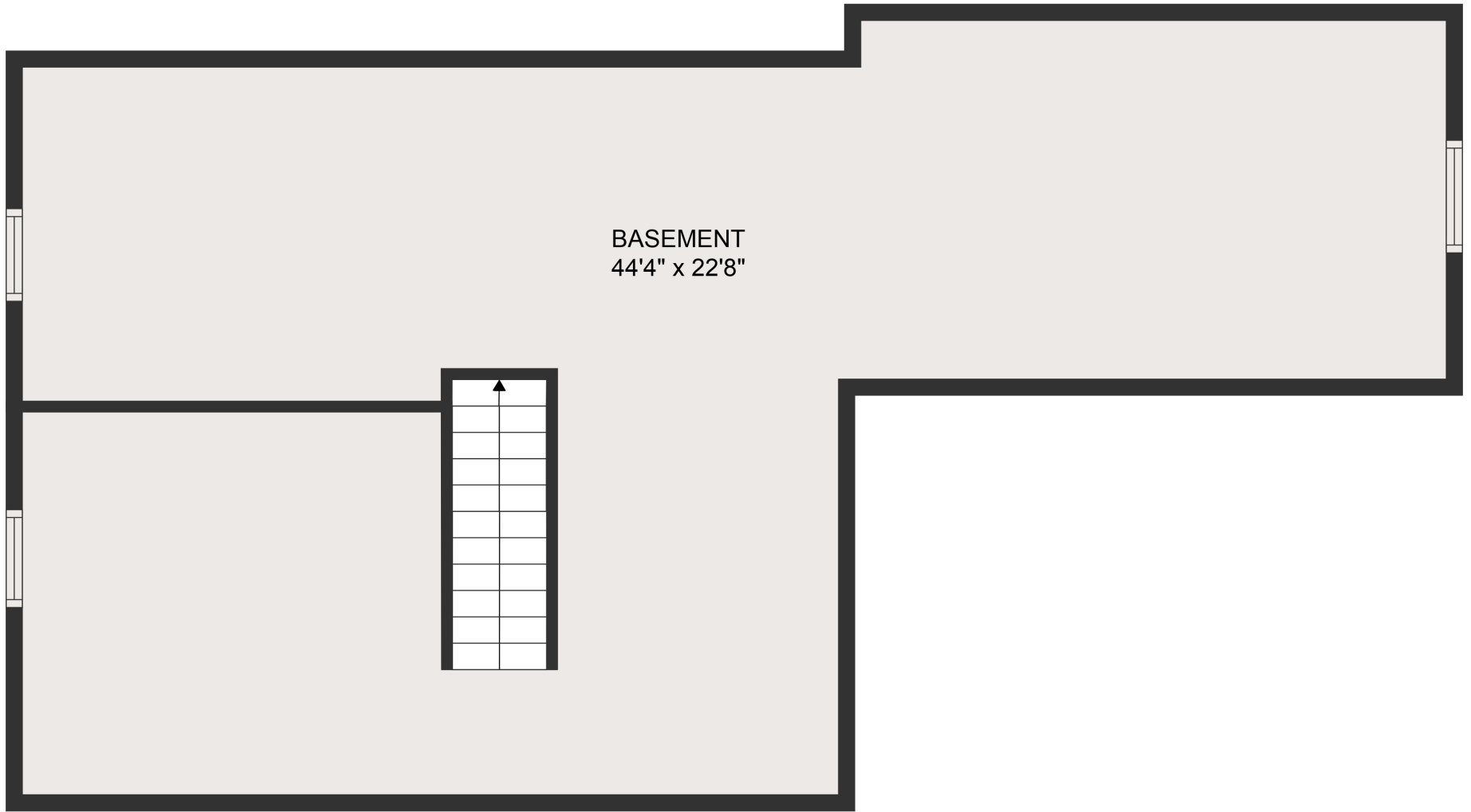
MEASUREMENTS ARE DEEMED HIGHLY RELIABLE BUT NOT GUARANTEED.



TOTAL: 2479 sq. ft

Below Ground: 788 sq. ft, FLOOR 2: 829 sq. ft, FLOOR 3: 862 sq. ft
EXCLUDED AREAS: GARAGE: 372 sq. ft

MEASUREMENTS ARE DEEMED HIGHLY RELIABLE BUT NOT GUARANTEED.



BASEMENT
44'4" x 22'8"

TOTAL: 2479 sq. ft
Below Ground: 788 sq. ft, FLOOR 2: 829 sq. ft, FLOOR 3: 862 sq. ft
EXCLUDED AREAS: GARAGE: 372 sq. ft

MEASUREMENTS ARE DEEMED HIGHLY RELIABLE BUT NOT GUARANTEED.