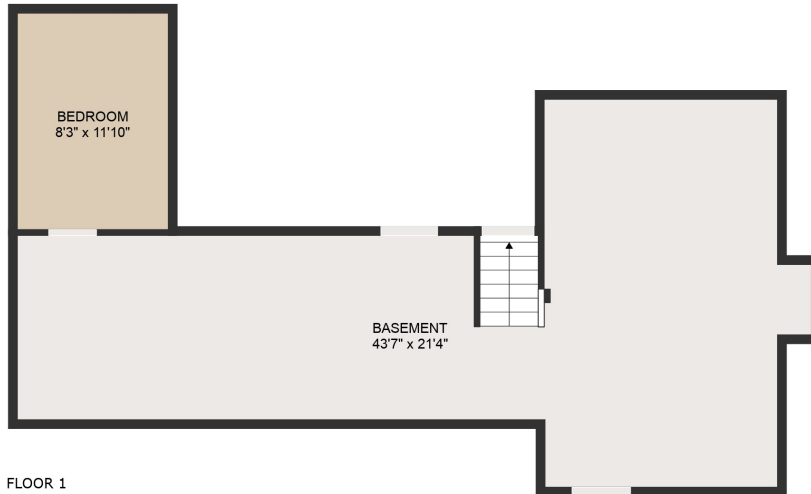


FLOOR 2



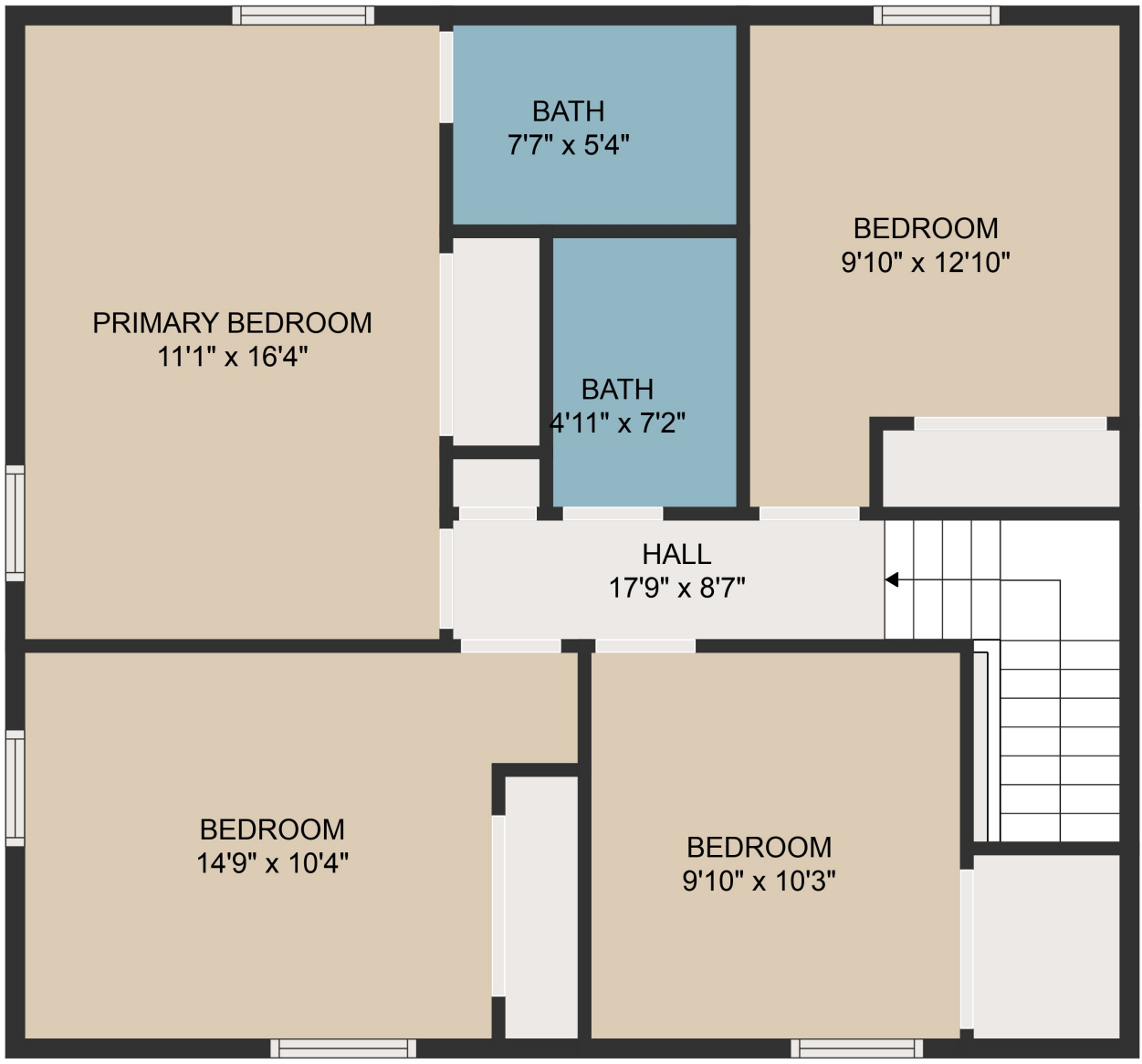
FLOOR 3



FLOOR 1

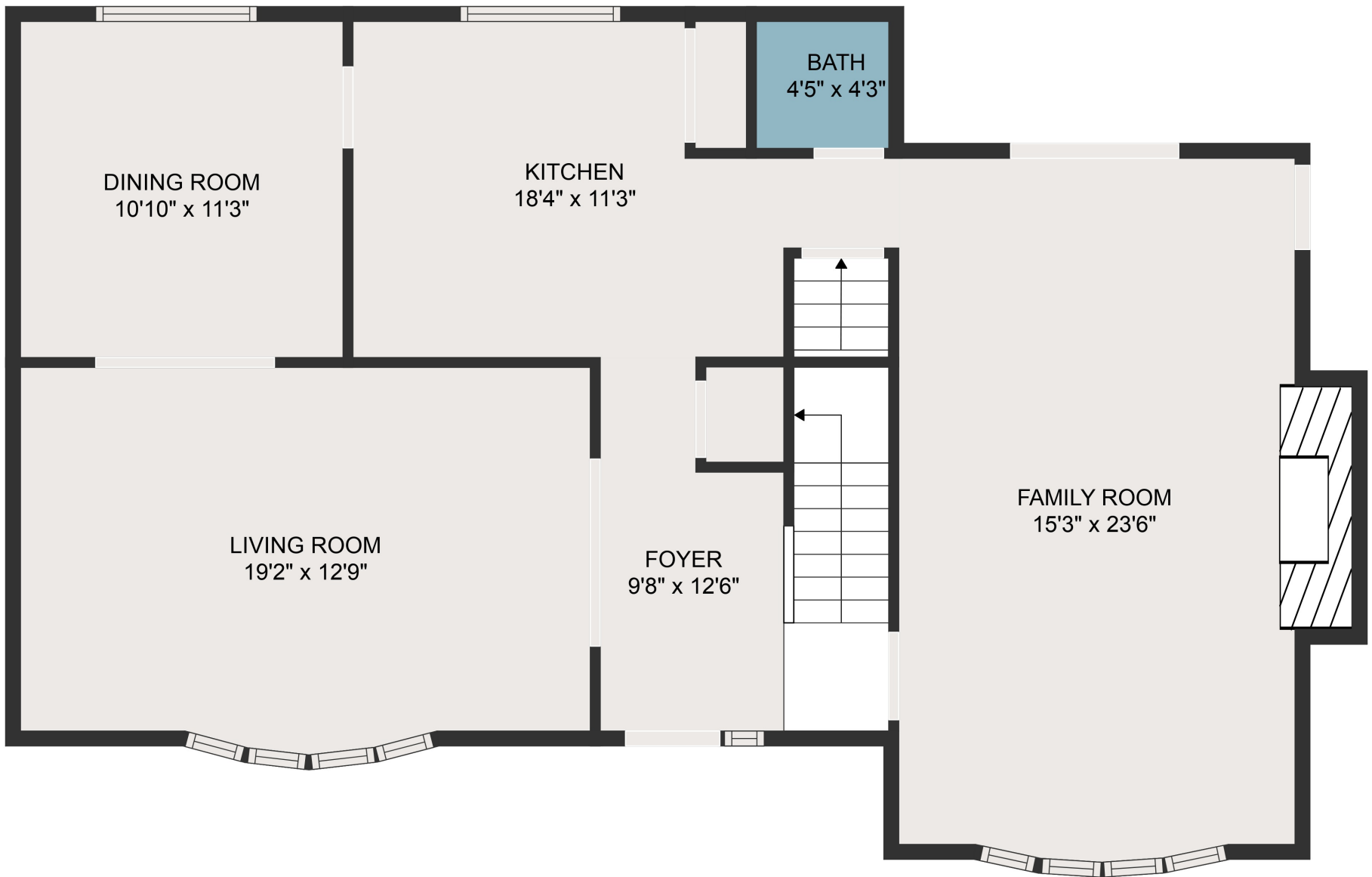
GROSS INTERNAL AREA
 Below Ground: 673 sq. ft, FLOOR 2: 1018 sq. ft, FLOOR 3: 787 sq. ft
 EXCLUDED AREAS: FIREPLACE: 12 sq. ft
 TOTAL: 2478 sq. ft

MEASUREMENTS ARE DEEMED HIGHLY RELIABLE BUT NOT GUARANTEED.



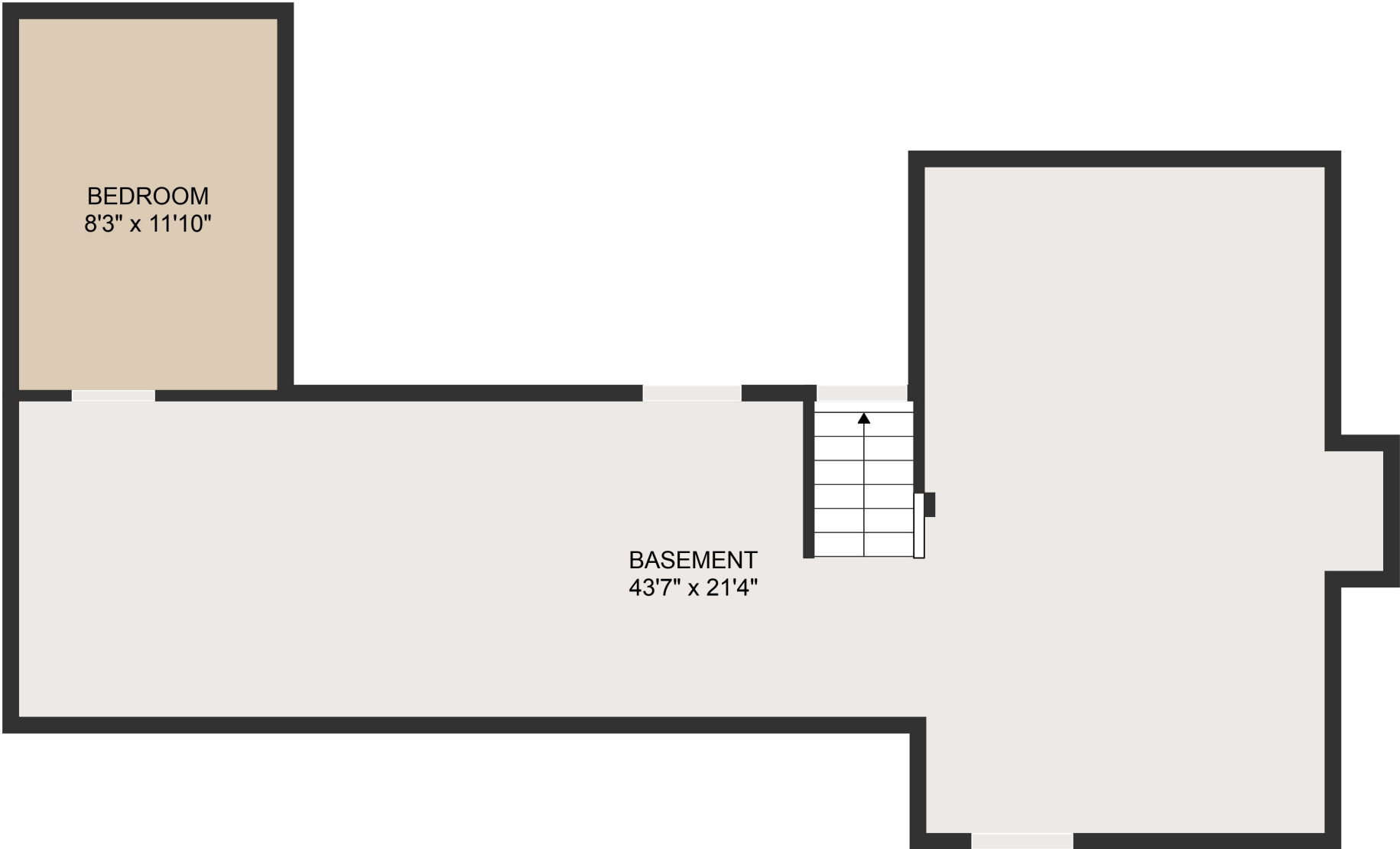
GROSS INTERNAL AREA
Below Ground: 673 sq. ft, FLOOR 2: 1018 sq. ft, FLOOR 3: 787 sq. ft
EXCLUDED AREAS: FIREPLACE: 12 sq. ft
TOTAL: 2478 sq. ft

MEASUREMENTS ARE DEEMED HIGHLY RELIABLE BUT NOT GUARANTEED.



GROSS INTERNAL AREA
Below Ground: 673 sq. ft, FLOOR 2: 1018 sq. ft, FLOOR 3: 787 sq. ft
EXCLUDED AREAS: FIREPLACE: 12 sq. ft
TOTAL: 2478 sq. ft

MEASUREMENTS ARE DEEMED HIGHLY RELIABLE BUT NOT GUARANTEED.



BASEMENT
43'7" x 21'4"

BEDROOM
8'3" x 11'10"

GROSS INTERNAL AREA
Below Ground: 673 sq. ft, FLOOR 2: 1018 sq. ft, FLOOR 3: 787 sq. ft
EXCLUDED AREAS: FIREPLACE: 12 sq. ft
TOTAL: 2478 sq. ft

MEASUREMENTS ARE DEEMED HIGHLY RELIABLE BUT NOT GUARANTEED.