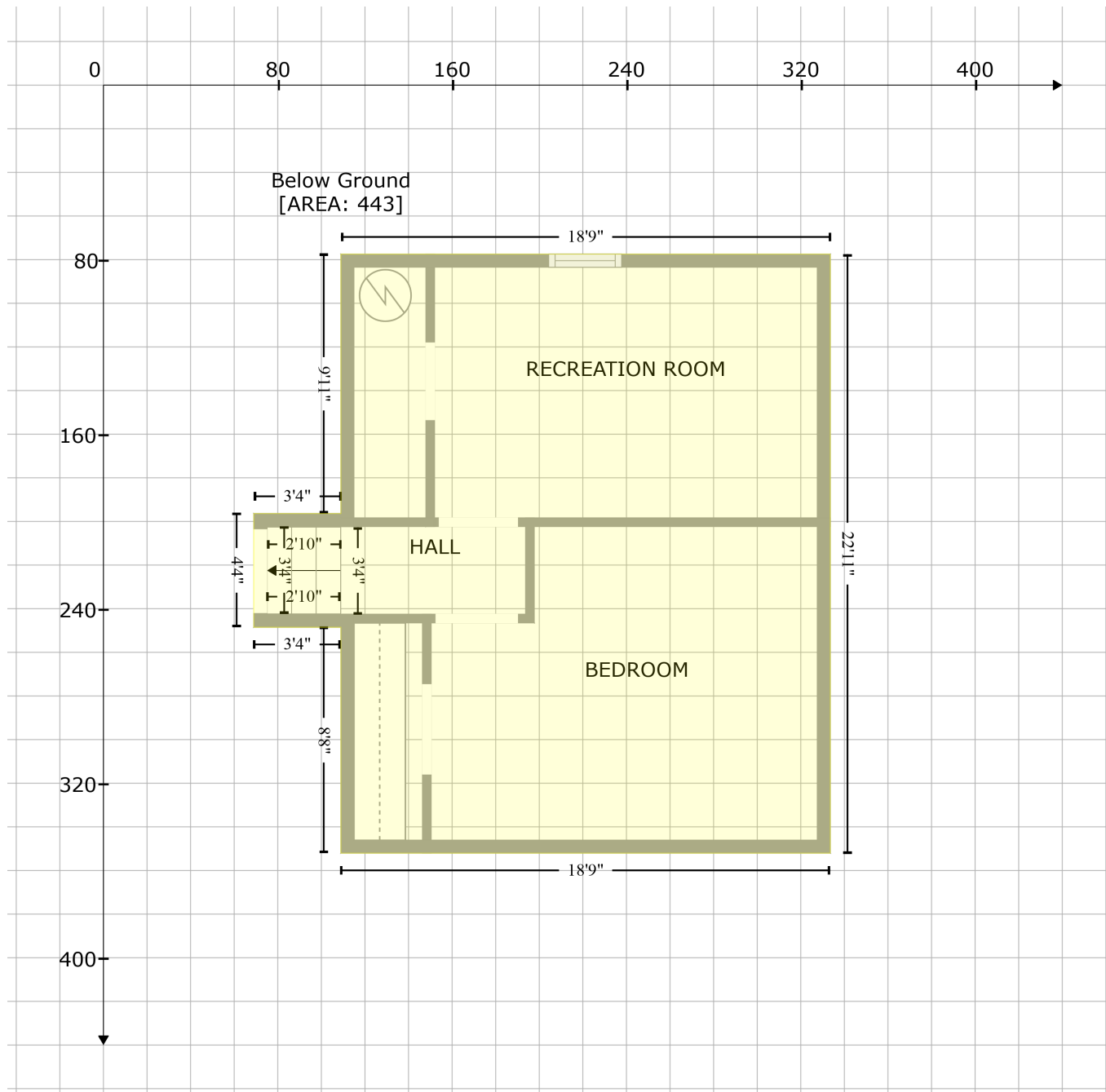


# 8 Palmer Street, Anthracite, Lebanon, Lebanon County, Pennsylvania, United States, 17042

Gross Living Area: 1267 sq. ft



Space	Area (sq. ft)	Calculation <small>Coordinate Polygon Area Algorithm using inches</small>
Below Ground (Living area)	443	$  \begin{aligned}  & -((333.6 + 333.6) * (77.5 - 352.1) + (333.6 + 109) * (352.1 - 352.1) + (109 + 109) * (352.1 - 248.5) \\  & + (109 + 69) * (248.5 - 248.5) + (69 + 69) * (248.5 - 196.4) + (69 + 109) * (196.4 - 196.4) + (109 + 109) * (196.4 - 77.5) + (109 + 333.6) * (77.5 - 77.5)) * 0.5 * 0.00694  \end{aligned}  $

# 8 Palmer Street, Anthracite, Lebanon, Lebanon County, Pennsylvania, United States, 17042

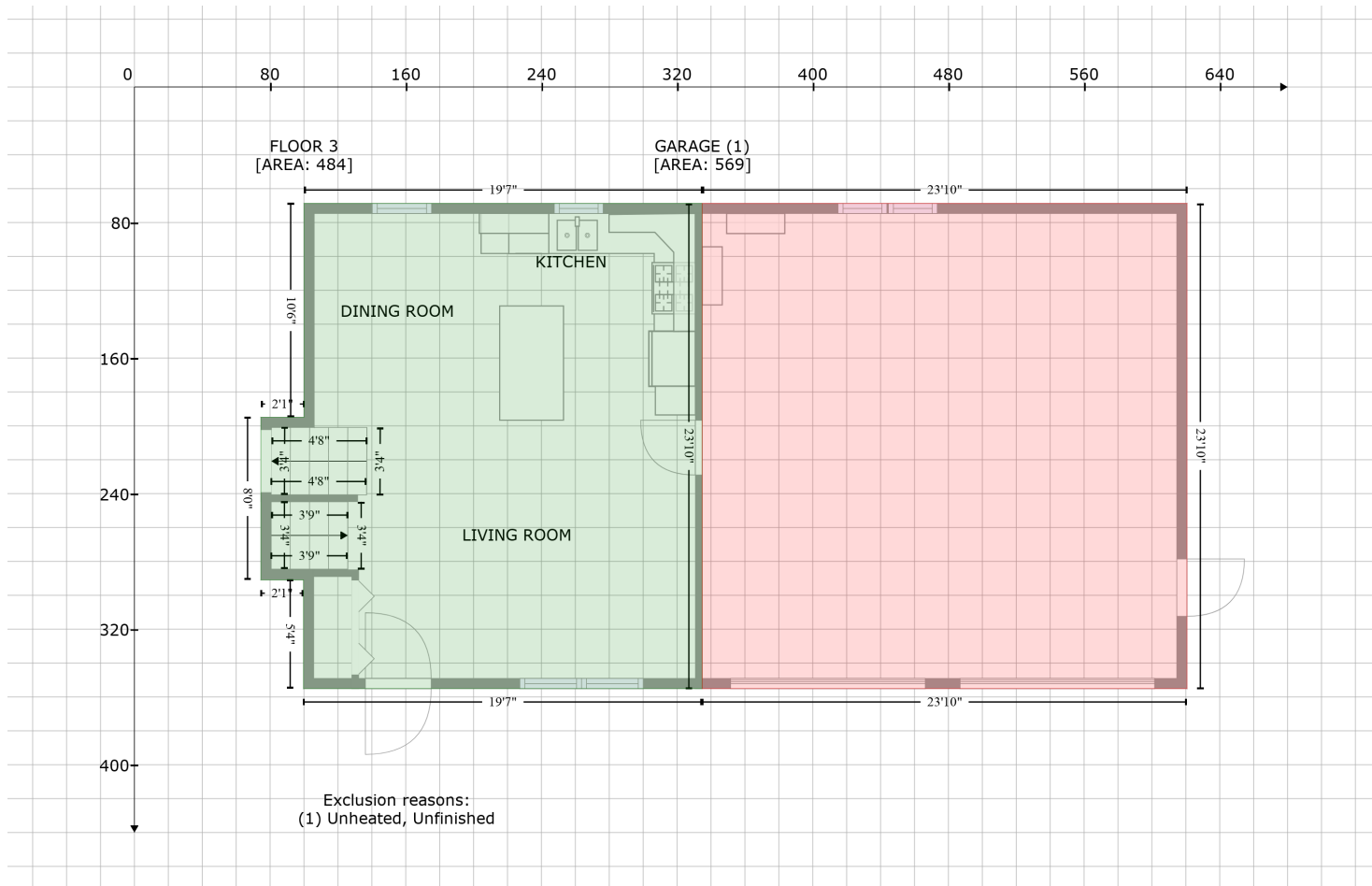
Gross Living Area: 1267 sq. ft



Space	Area (sq. ft)	Calculation <small>Coordinate Polygon Area Algorithm using inches</small>
Below Ground (Living area)	719	$-((383.3 + 383.3) * (69.1 - 391.7) + (383.3 + 62.3) * (391.7 - 391.7) + (62.3 + 62.3) * (391.7 - 69.1) + (62.3 + 383.3) * (69.1 - 69.1)) * 0.5 * 0.00694$

# 8 Palmer Street, Anthracite, Lebanon, Lebanon County, Pennsylvania, United States, 17042

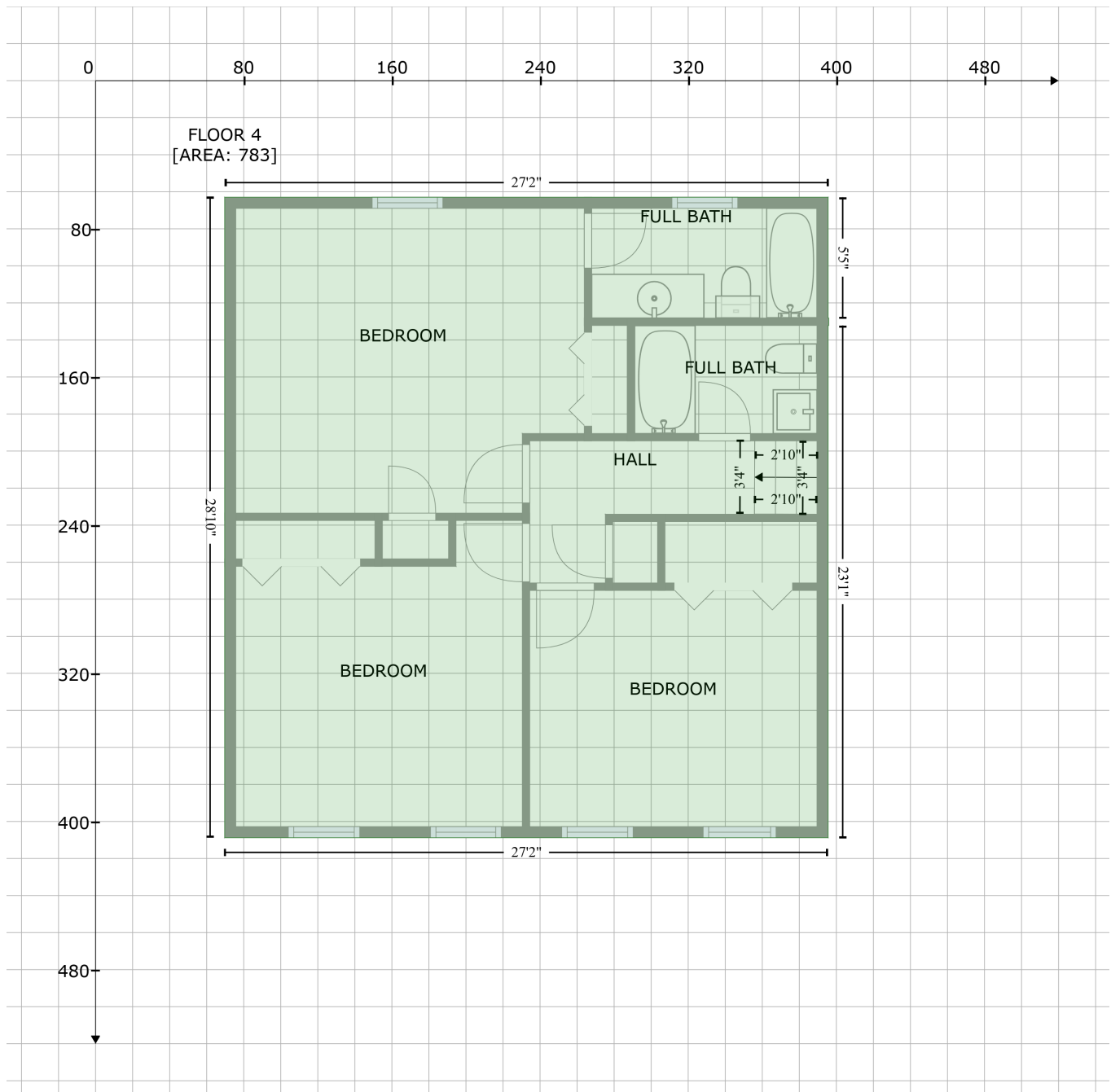
Gross Living Area: 1267 sq. ft



Space	Area (sq. ft)	Calculation <small>Coordinate Polygon Area Algorithm using inches</small>
FLOOR 3 (Living area)	484	$-\left((334.8 + 334.8) * (68.7 - 355.1) + (334.8 + 99.7) * (355.1 - 355.1) + (99.7 + 99.7) * (355.1 - 290.9) + (99.7 + 74.6) * (290.9 - 290.9) + (74.6 + 74.6) * (290.9 - 195) + (74.6 + 100) * (195 - 195) + (100 + 100) * (195 - 68.7) + (100 + 334.8) * (68.7 - 68.7)\right) * 0.5 * 0.00694$
GARAGE (Non-living area)	569	$-\left((620.7 + 620.7) * (68.7 - 355.1) + (620.7 + 334.8) * (355.1 - 355.1) + (334.8 + 334.8) * (355.1 - 68.7) + (334.8 + 620.7) * (68.7 - 68.7)\right) * 0.5 * 0.00694$

# 8 Palmer Street, Anthracite, Lebanon, Lebanon County, Pennsylvania, United States, 17042

Gross Living Area: 1267 sq. ft



Space	Area (sq. ft)	Calculation <small>Coordinate Polygon Area Algorithm using inches</small>
FLOOR 4 (Living area)	783	$-\left((395.6 + 395.6) * (62.9 - 128.2) + (395.6 + 395.9) * (128.2 - 128.2) + (395.9 + 395.9) * (128.2 - 132.2) + (395.9 + 395.6) * (132.2 - 132.2) + (395.6 + 395.6) * (132.2 - 408.8) + (395.6 + 69.7) * (408.8 - 408.8) + (69.7 + 69.7) * (408.8 - 62.9) + (69.7 + 395.6) * (62.9 - 62.9)\right) * 0.5 * 0.00694$