

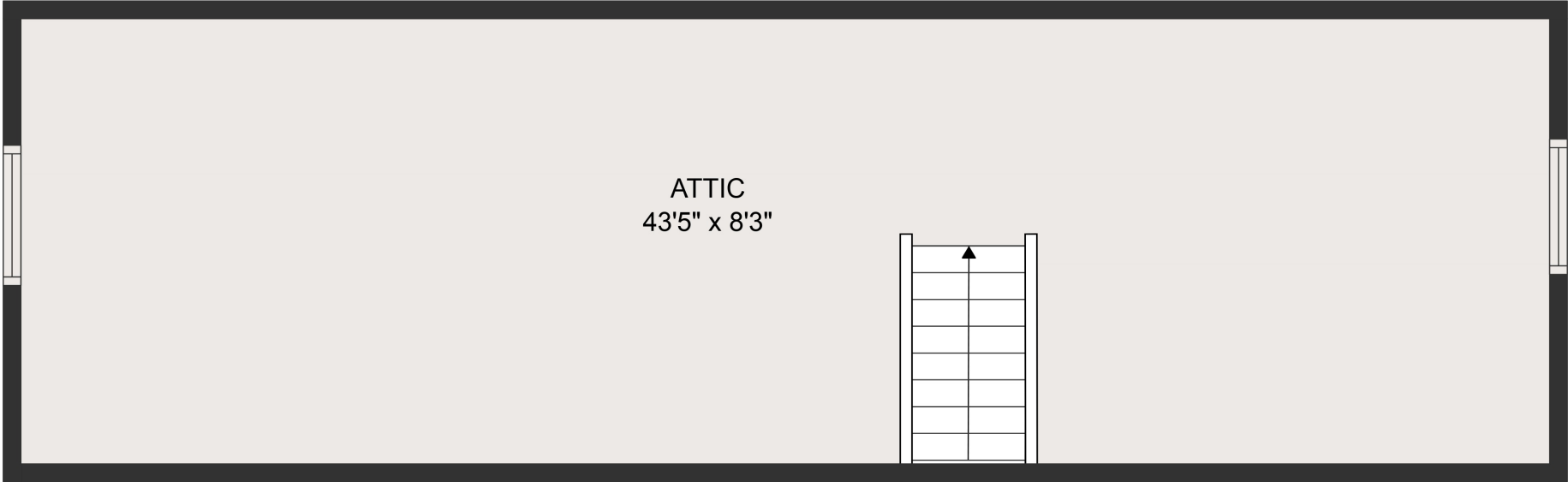
FLOOR 2



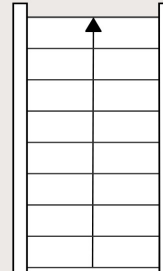
FLOOR 1

GROSS INTERNAL AREA
 Below Ground: 650 sq. ft, FLOOR 2: 1222 sq. ft, FLOOR 3: 0 sq. ft
 EXCLUDED AREAS: ELECTRICAL ROOM: 29 sq. ft, HALL: 40 sq. ft, STORAGE: 263 sq. ft,
 LAUNDRY: 122 sq. ft, FIREPLACE: 12 sq. ft, LOW CEILING: 420 sq. ft,
 ATTIC: 130 sq. ft
 TOTAL: 1872 sq. ft

MEASUREMENTS ARE DEEMED HIGHLY RELIABLE BUT NOT GUARANTEED.

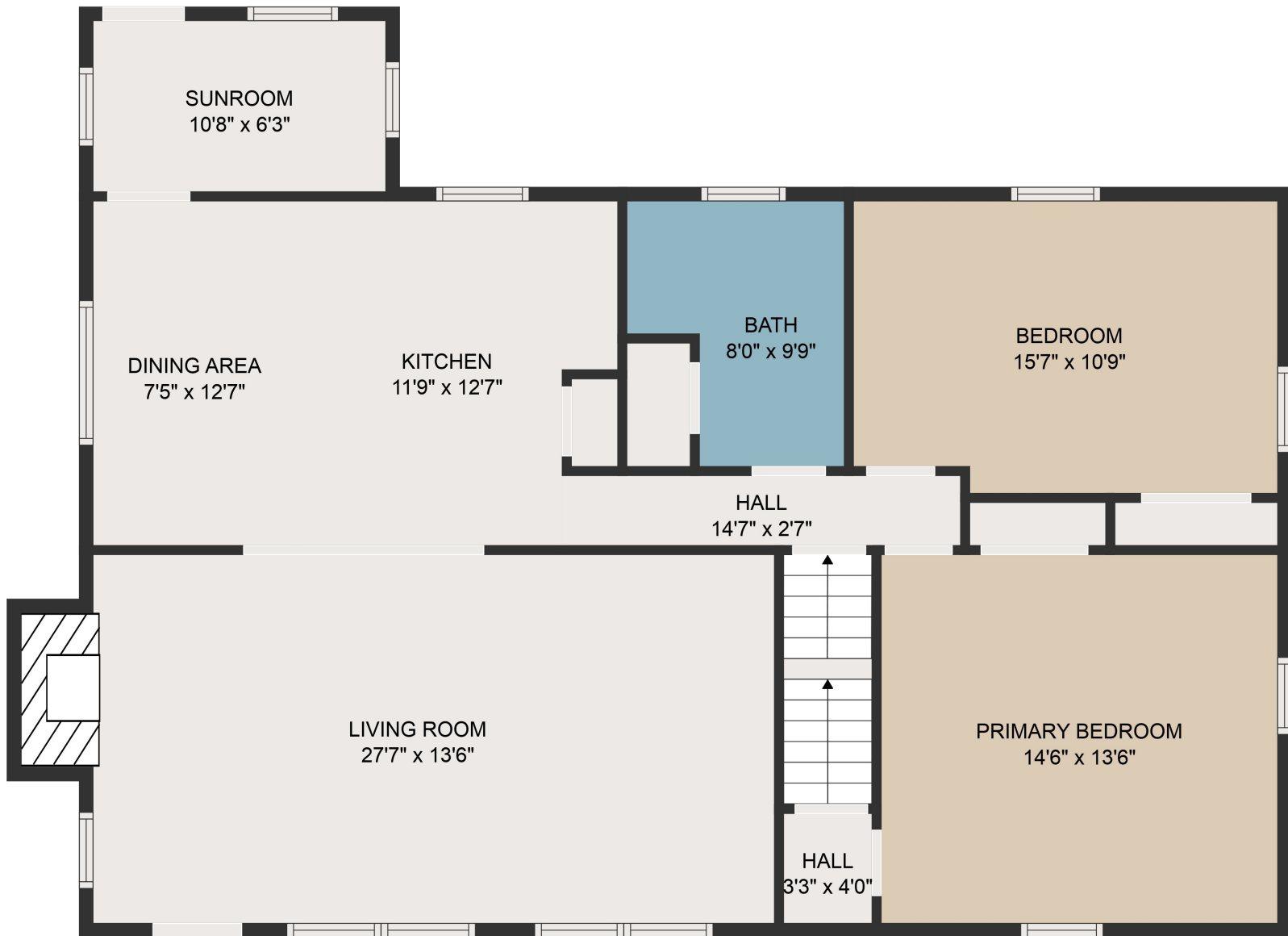


ATTIC
43'5" x 8'3"



GROSS INTERNAL AREA
Below Ground: 650 sq. ft, FLOOR 2: 1222 sq. ft, FLOOR 3: 0 sq. ft
EXCLUDED AREAS: ELECTRICAL ROOM: 29 sq. ft, HALL: 40 sq. ft, STORAGE: 263 sq. ft,
LAUNDRY: 122 sq. ft, FIREPLACE: 12 sq. ft, LOW CEILING: 420 sq. ft,
ATTIC: 130 sq. ft
TOTAL: 1872 sq. ft

MEASUREMENTS ARE DEEMED HIGHLY RELIABLE BUT NOT GUARANTEED.



GROSS INTERNAL AREA
 Below Ground: 650 sq. ft, FLOOR 2: 1222 sq. ft, FLOOR 3: 0 sq. ft
 EXCLUDED AREAS: ELECTRICAL ROOM: 29 sq. ft, HALL: 40 sq. ft, STORAGE: 263 sq. ft,
 LAUNDRY: 122 sq. ft, FIREPLACE: 12 sq. ft, LOW CEILING: 420 sq. ft,
 ATTIC: 130 sq. ft
 TOTAL: 1872 sq. ft

MEASUREMENTS ARE DEEMED HIGHLY RELIABLE BUT NOT GUARANTEED.



GROSS INTERNAL AREA
 Below Ground: 650 sq. ft, FLOOR 2: 1222 sq. ft, FLOOR 3: 0 sq. ft
 EXCLUDED AREAS: ELECTRICAL ROOM: 29 sq. ft, HALL: 40 sq. ft, STORAGE: 263 sq. ft,
 LAUNDRY: 122 sq. ft, FIREPLACE: 12 sq. ft, LOW CEILING: 420 sq. ft,
 ATTIC: 130 sq. ft
 TOTAL: 1872 sq. ft

MEASUREMENTS ARE DEEMED HIGHLY RELIABLE BUT NOT GUARANTEED.