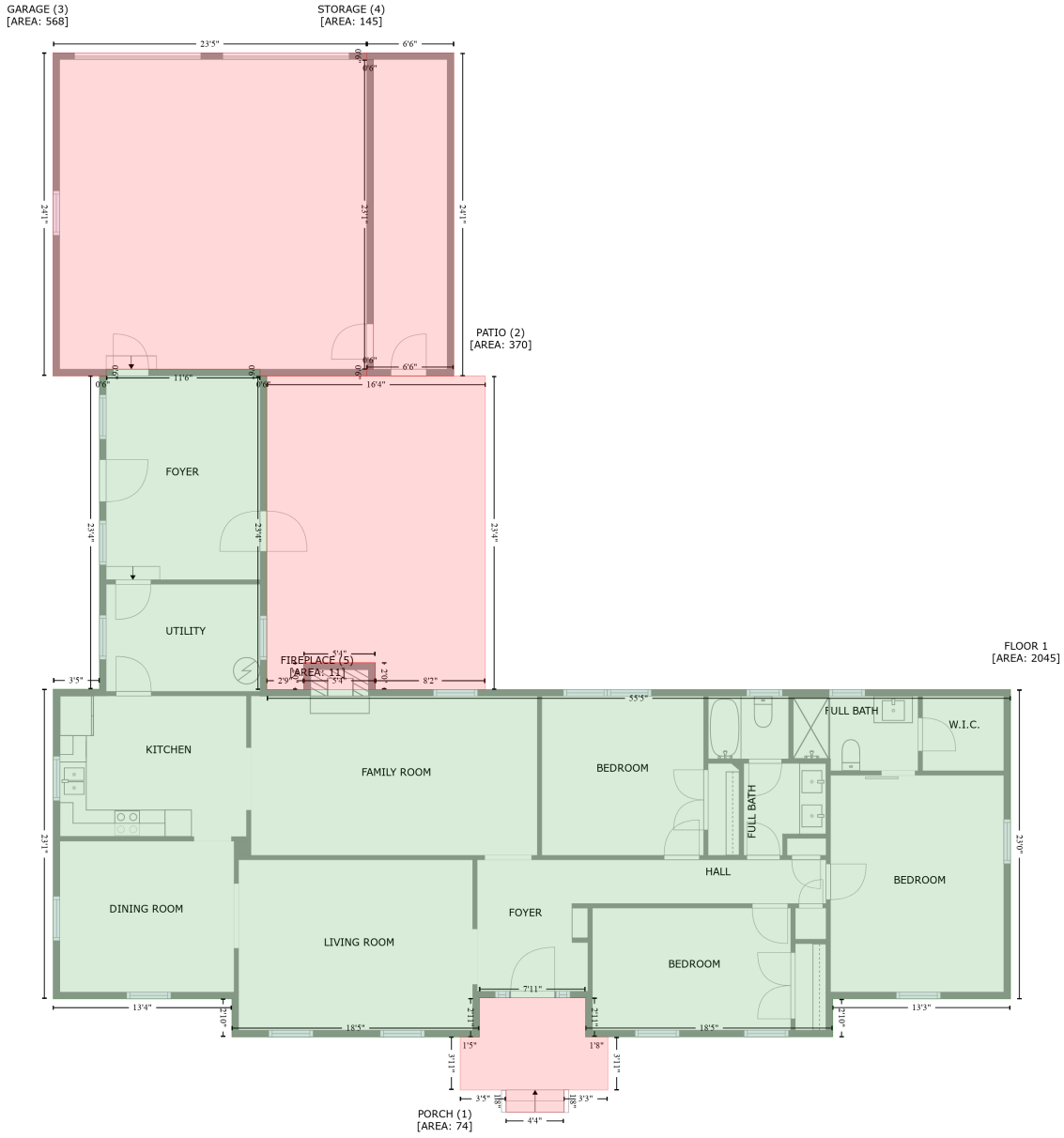


1241 Askea Grove Lane, Askea Grove, Arab, Marshall County, Alabama, United States, 35016, 1241

Gross Living Area: 2045 sq. ft



Space	Area (sq. ft)	Calculation
FLOOR 1 (Living area)	2045	Coordinate Polygon Area Algorithm using inches $-\left((278.9 + 278.9) * (190.7 - 196.7) + (278.9 + 284.9) * (196.7 - 196.7) + (284.9 + 284.9) * (196.7 - 477) + (284.9 + 950.3) * (477 - 477) + (950.3 + 950.3) * (477 - 753.4) + (950.3 + 791.3) * (753.4 - 753.4) + (791.3 + 791.3) * (753.4 - 787.4) + (791.3 + 570.2) * (787.4 - 787.4) + (570.2 + 570.2) * (787.4 - 752.6) + (570.2 + 475.1) * (752.6 - 752.6) + (475.1 + 475.1) * (752.6 - 787.5) + (475.1 + 253.7) * (787.5 - 787.5) + (253.7 + 253.7) * (787.5 - 753.4) + (253.7 + 93.8) * (753.4 - 753.4) + (93.8 + 93.8) * (753.4 - 476.7) + (93.8 + 135.2) * (476.7 - 476.7) + (135.2 + 135.2) * (476.7 - 196.7) + (135.2 + 141.2) * (196.7 - 196.7) + (141.2 + 141.2) * (196.7 - 190.7) + (141.2 + 278.9) * \right.$

1241 Askea Grove Lane, Askea Grove, Arab, Marshall County, Alabama, United States, 35016, 1241

Gross Living Area: 2045 sq. ft

Space	Area (sq. ft)	Calculation <small>Coordinate Polygon Area Algorithm using inches</small>
PORCH (Non-living area)	74	$(190.7 - 190.7) * 0.5 * 0.00694$ $-((570.2 + 570.2) * (752.6 - 787.4) + (570.2 + 590.1) * (787.4 - 787.4) + (590.1 + 590.1) * (787.4 - 834.9) + (590.1 + 550.9) * (834.9 - 834.9) + (550.9 + 550.9) * (834.9 - 854.7) + (550.9 + 498.9) * (854.7 - 854.7) + (498.9 + 498.9) * (854.7 - 834.9) + (498.9 + 458) * (834.9 - 834.9) + (458 + 458) * (834.9 - 787.5) + (458 + 475.1) * (787.5 - 787.5) + (475.1 + 475.1) * (787.5 - 752.6) + (475.1 + 570.2) * (752.6 - 752.6)) * 0.5 * 0.00694$
PATIO (Non-living area)	370	$-((480.4 + 480.4) * (196.7 - 477) + (480.4 + 382.1) * (477 - 477) + (382.1 + 382.1) * (477 - 453) + (382.1 + 318.1) * (453 - 453) + (318.1 + 318.1) * (453 - 477) + (318.1 + 284.9) * (477 - 477) + (284.9 + 284.9) * (477 - 196.7) + (284.9 + 480.4) * (196.7 - 196.7)) * 0.5 * 0.00694$
GARAGE (Non-living area)	568	$-((374.3 + 374.3) * (-92.1 - -86.1) + (374.3 + 380.3) * (-86.1 - -86.1) + (380.3 + 380.3) * (-86.1 - 190.7) + (380.3 + 374.3) * (190.7 - 190.7) + (374.3 + 374.3) * (190.7 - 196.7) + (374.3 + 278.9) * (196.7 - 196.7) + (278.9 + 278.9) * (196.7 - 190.7) + (278.9 + 141.2) * (190.7 - 190.7) + (141.2 + 141.2) * (190.7 - 196.7) + (141.2 + 93.6) * (196.7 - 196.7) + (93.6 + 93.6) * (196.7 - -92.1) + (93.6 + 374.3) * (-92.1 - -92.1)) * 0.5 * 0.00694$
STORAGE (Non-living area)	145	$-((452.3 + 452.3) * (-92.1 - 196.7) + (452.3 + 374.3) * (196.7 - 196.7) + (374.3 + 374.3) * (196.7 - 190.7) + (374.3 + 380.3) * (190.7 - 190.7) + (380.3 + 380.3) * (190.7 - -86.1) + (380.3 + 374.3) * (-86.1 - -86.1) + (374.3 + 374.3) * (-86.1 - -92.1) + (374.3 + 452.3) * (-92.1 - -92.1)) * 0.5 * 0.00694$
FIREPLACE (Non-living area)	11	$-((382.1 + 382.1) * (453 - 477) + (382.1 + 318.1) * (477 - 477) + (318.1 + 318.1) * (477 - 453) + (318.1 + 382.1) * (453 - 453)) * 0.5 * 0.00694$