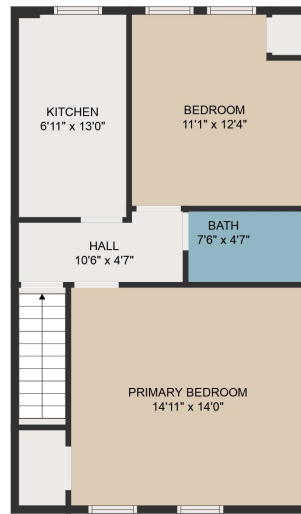
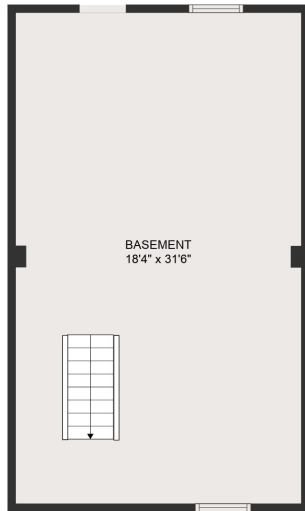


FLOOR 2



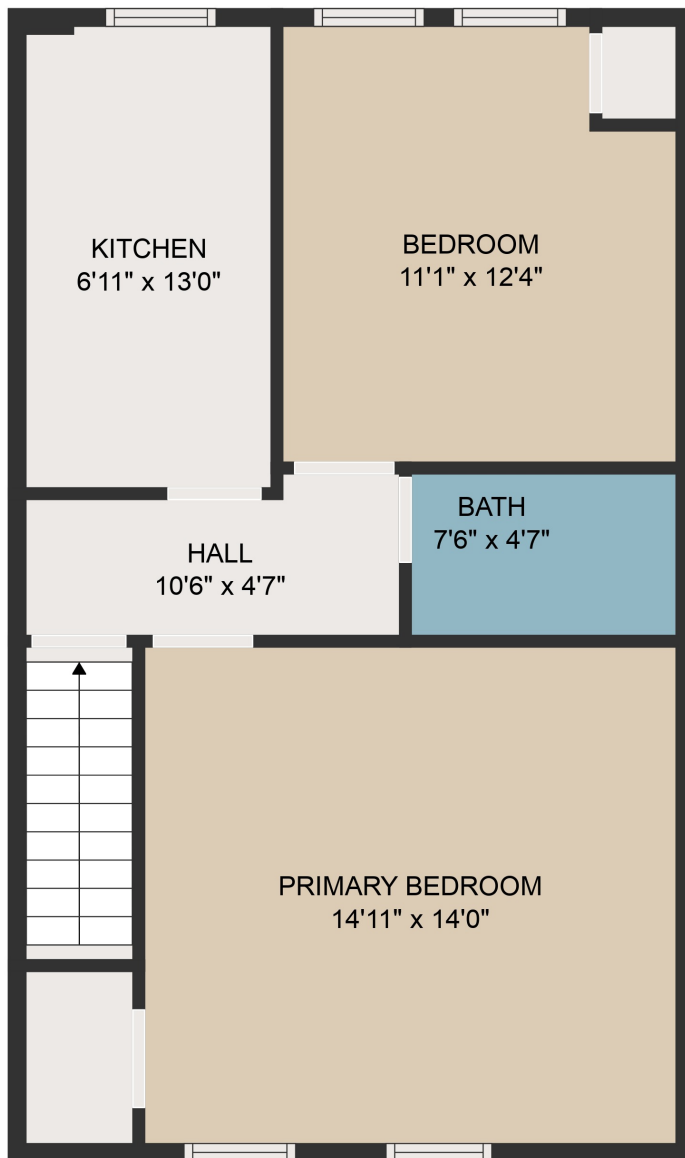
FLOOR 3



FLOOR 1

GROSS INTERNAL AREA
 Below Ground: 578 sq. ft, FLOOR 2: 578 sq. ft, FLOOR 3: 578 sq. ft
 TOTAL: 1734 sq. ft

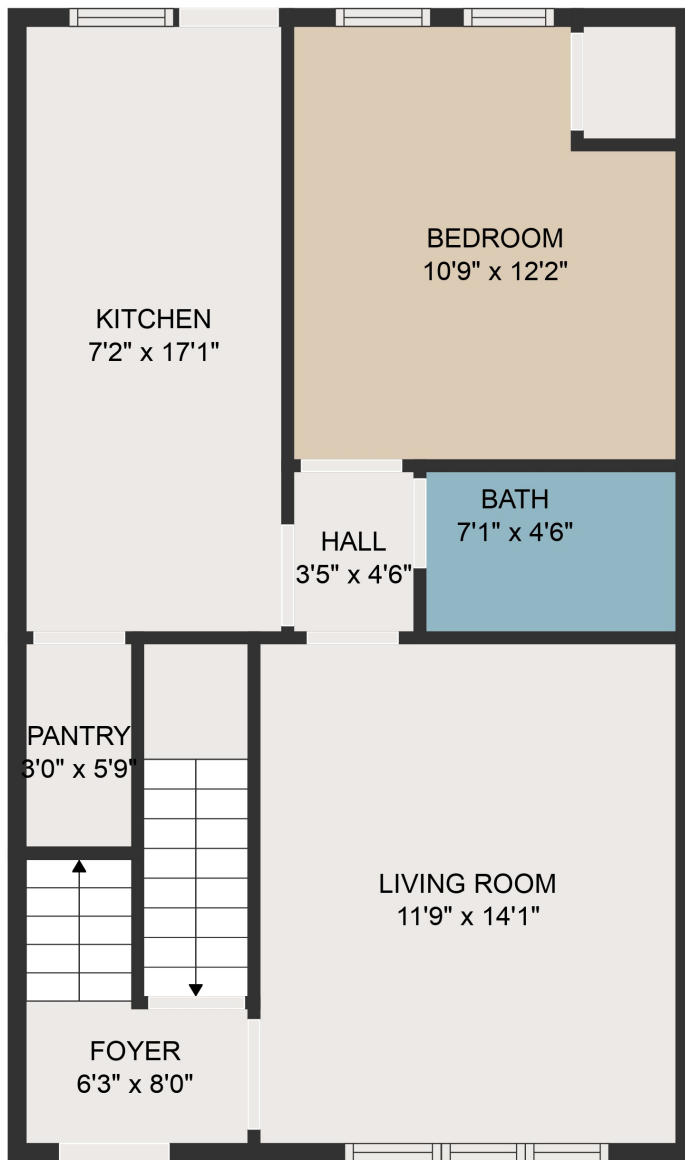
MEASUREMENTS ARE DEEMED HIGHLY RELIABLE BUT NOT GUARANTEED.



GROSS INTERNAL AREA

Below Ground: 578 sq. ft, FLOOR 2: 578 sq. ft, FLOOR 3: 578 sq. ft
TOTAL: 1734 sq. ft

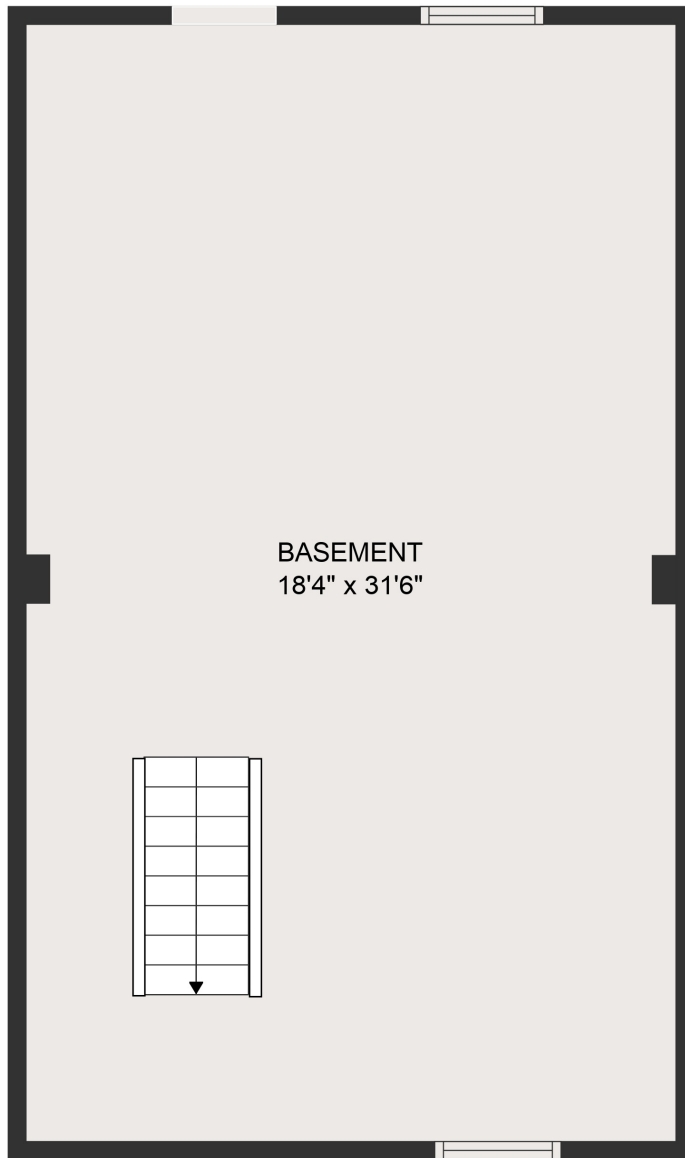
MEASUREMENTS ARE DEEMED HIGHLY RELIABLE BUT NOT GUARANTEED.



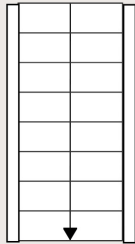
GROSS INTERNAL AREA

Below Ground: 578 sq. ft, FLOOR 2: 578 sq. ft, FLOOR 3: 578 sq. ft
TOTAL: 1734 sq. ft

MEASUREMENTS ARE DEEMED HIGHLY RELIABLE BUT NOT GUARANTEED.



BASEMENT
18'4" x 31'6"



GROSS INTERNAL AREA
Below Ground: 578 sq. ft, FLOOR 2: 578 sq. ft, FLOOR 3: 578 sq. ft
TOTAL: 1734 sq. ft

MEASUREMENTS ARE DEEMED HIGHLY RELIABLE BUT NOT GUARANTEED.