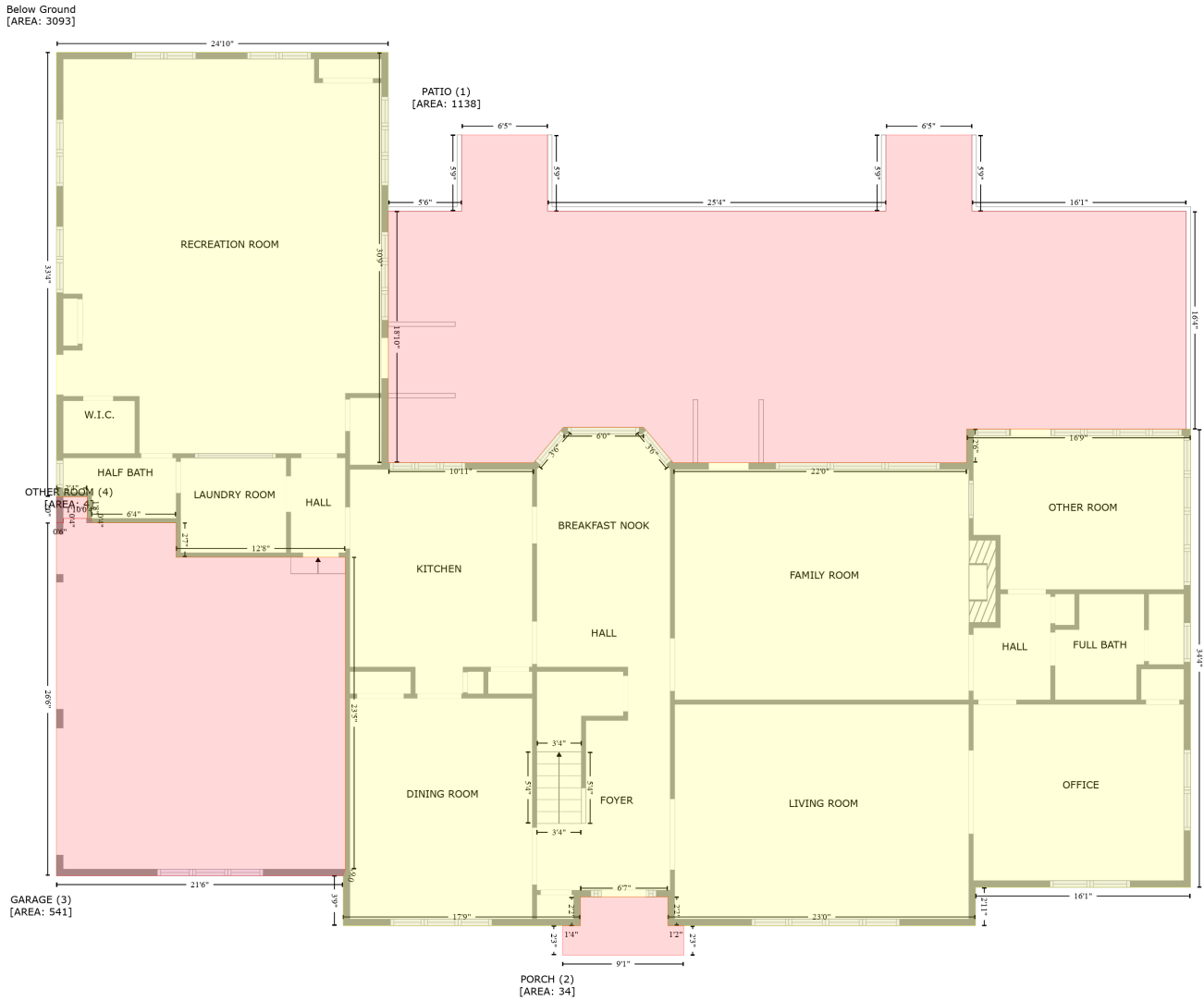


# 5713 Criner Road Southeast, Huntsville, Madison County, Alabama, United States, 35802

Gross Living Area: 2065 sq. ft



Space	Area (sq. ft)	Calculation
Below Ground (Living area)	3093	Coordinate Polygon Area Algorithm using inches $-((235.7 + 235.7) * (60.2 - 429.6) + (235.7 + 366.4) * (429.6 - 429.6) + (366.4 + 392) * (429.6 - 399.3) + (392 + 393.1) * (399.3 - 397.8) + (393.1 + 465.3) * (397.8 - 397.8) + (465.3 + 466.4) * (397.8 - 399.3) + (466.4 + 492) * (399.3 - 429.6) + (492 + 755.7) * (429.6 - 429.6) + (755.7 + 755.7) * (429.6 - 399.3) + (755.7 + 957) * (399.3 - 399.3) + (957 + 957) * (399.3 - 811.7) + (957 + 763.7) * (811.7 - 811.7) + (763.7 + 763.7) * (811.7 - 846.3) + (763.7 + 487.2) * (846.3 - 846.3) + (487.2 + 487.2) * (846.3 - 820.4) + (487.2 + 408.5) * (820.4 - 820.4) + (408.5 + 408.5) * (820.4 - 846.3) + (408.5 + 195.2) * (846.3 - 846.3) + (195.2 + 195.2) * (846.3 - 801.4) + (195.2 + 197.2) * (801.4 - 795.4) + (197.2 + 197.2) * (795.4 - 514.7) + (197.2 + 45.1) * (514.7 - 514.7) + (45.1 + 45.1) * (514.7 - 483.8) + (45.1 + -30.9) * (483.8 - 483.8) + (-30.9 + -30.9) * (483.8 - 479.8) + (-30.9 + -34.9) * (479.8 - 479.8) + (-34.9 + -34.9) * (479.8 - 460.2) + (-34.9 + -62.5) * (460.2 - 460.2) + (-62.5 + -62.5) * (460.2 - 60.2) + (-62.5 + 235.7) * (60.2 - 60.2)) * 0.5 * 0.00694$

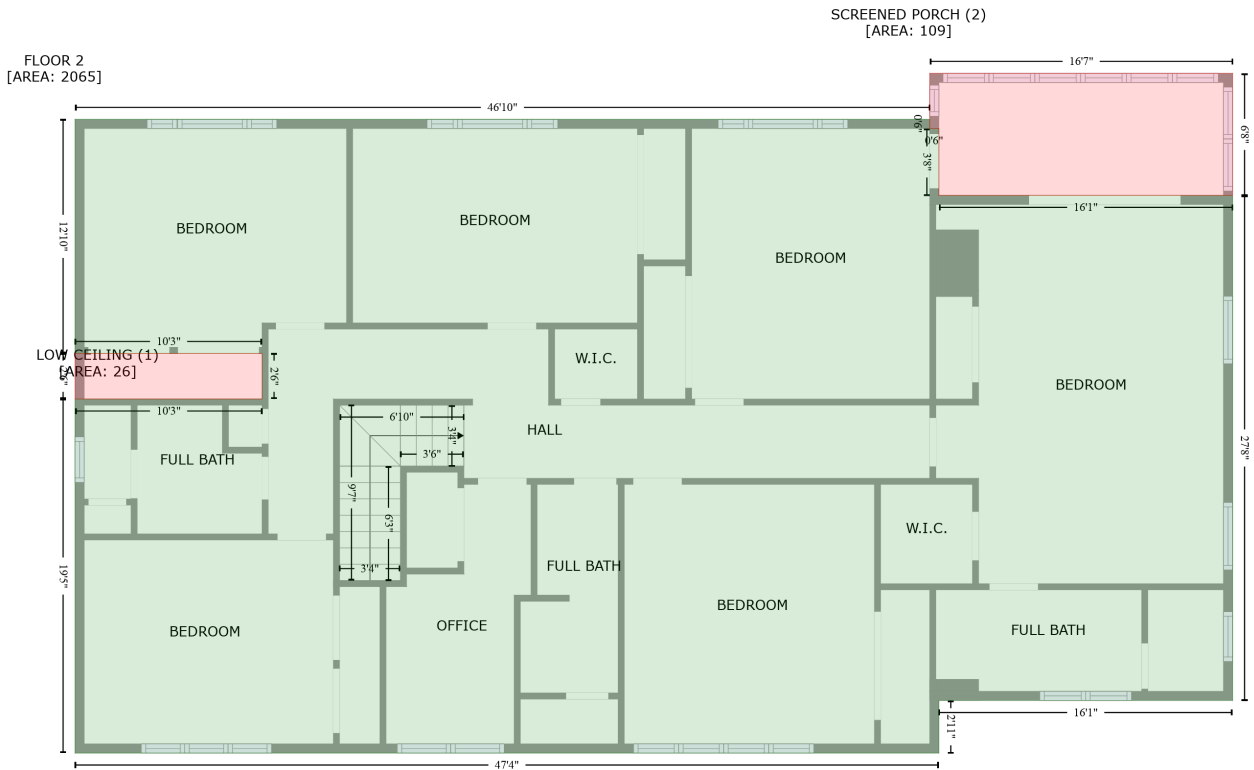
# 5713 Criner Road Southeast, Huntsville, Madison County, Alabama, United States, 35802

Gross Living Area: 2065 sq. ft

Space	Area (sq. ft)	Calculation <small>Coordinate Polygon Area Algorithm using inches</small>
PATIO (Non-living area)	1138	$-\left((379 + 379) * (134.6 - 203.2) + (379 + 683.1) * (203.2 - 203.2) + (683.1 + 683.1) * (203.2 - 134.6) + (683.1 + 760.4) * (134.6 - 134.6) + (760.4 + 760.4) * (134.6 - 203.2) + (760.4 + 953) * (203.2 - 203.2) + (953 + 953) * (203.2 - 399.3) + (953 + 755.7) * (399.3 - 399.3) + (755.7 + 755.7) * (399.3 - 429.6) + (755.7 + 492) * (429.6 - 429.6) + (492 + 465.3) * (429.6 - 397.8) + (465.3 + 393.1) * (397.8 - 397.8) + (393.1 + 366.4) * (397.8 - 429.6) + (366.4 + 235.7) * (429.6 - 429.6) + (235.7 + 235.7) * (429.6 - 203.2) + (235.7 + 301.7) * (203.2 - 203.2) + (301.7 + 301.7) * (203.2 - 134.6) + (301.7 + 379) * (134.6 - 134.6)\right) * 0.5 * 0.00694$
PORCH (Non-living area)	34	$-\left((487.2 + 487.2) * (820.4 - 846.3) + (487.2 + 501.5) * (846.3 - 846.3) + (501.5 + 501.5) * (846.3 - 872.9) + (501.5 + 392.4) * (872.9 - 872.9) + (392.4 + 392.4) * (872.9 - 846.3) + (392.4 + 408.5) * (846.3 - 846.3) + (408.5 + 408.5) * (846.3 - 820.4) + (408.5 + 487.2) * (820.4 - 820.4)\right) * 0.5 * 0.00694$
GARAGE (Non-living area)	541	$-\left((-30.9 + -30.9) * (479.8 - 483.8) + (-30.9 + 45.1) * (483.8 - 483.8) + (45.1 + 45.1) * (483.8 - 514.7) + (45.1 + 197.2) * (514.7 - 514.7) + (197.2 + 197.2) * (514.7 - 795.4) + (197.2 + 195.2) * (795.4 - 801.4) + (195.2 + -62.5) * (801.4 - 801.4) + (-62.5 + -62.5) * (801.4 - 483.8) + (-62.5 + -56.5) * (483.8 - 483.8) + (-56.5 + -56.5) * (483.8 - 479.8) + (-56.5 + -30.9) * (479.8 - 479.8)\right) * 0.5 * 0.00694$
OTHER ROOM (Non-living area)	4	$-\left((-34.9 + -34.9) * (460.2 - 479.8) + (-34.9 + -56.5) * (479.8 - 479.8) + (-56.5 + -56.5) * (479.8 - 483.8) + (-56.5 + -62.5) * (483.8 - 483.8) + (-62.5 + -62.5) * (483.8 - 460.2) + (-62.5 + -34.9) * (460.2 - 460.2)\right) * 0.5 * 0.00694$

# 5713 Criner Road Southeast, Huntsville, Madison County, Alabama, United States, 35802

Gross Living Area: 2065 sq. ft



Space	Area (sq. ft)	Calculation <small>Coordinate Polygon Area Algorithm using inches</small>
FLOOR 2 (Living area)	2065	$-\left((757.7 + 757.7) * (429.6 - 435.6) + (757.7 + 763.7) * (435.6 - 435.6) + (763.7 + 763.7) * (435.6 - 479.6) + (763.7 + 957) * (479.6 - 479.6) + (957 + 957) * (479.6 - 811.7) + (957 + 763.7) * (811.7 - 811.7) + (763.7 + 763.7) * (811.7 - 846.3) + (763.7 + 195.2) * (846.3 - 846.3) + (195.2 + 195.2) * (846.3 - 613.5) + (195.2 + 318.3) * (613.5 - 613.5) + (318.3 + 318.3) * (613.5 - 583.5) + (318.3 + 195.2) * (583.5 - 583.5) + (195.2 + 195.2) * (583.5 - 429.6) + (195.2 + 757.7) * (429.6 - 429.6)\right) * 0.5 * 0.00694$
LOW CEILING (Non-living area)	26	$-\left((318.3 + 318.3) * (583.5 - 613.5) + (318.3 + 195.2) * (613.5 - 613.5) + (195.2 + 195.2) * (613.5 - 583.5) + (195.2 + 318.3) * (583.5 - 583.5)\right) * 0.5 * 0.00694$
SCREENED PORCH (Non-living area)	109	$-\left((957 + 957) * (399.3 - 479.6) + (957 + 763.7) * (479.6 - 479.6) + (763.7 + 763.7) * (479.6 - 435.6) + (763.7 + 757.7) * (435.6 - 435.6) + (757.7 + 757.7) * (435.6 - 399.3) + (399.3 - 399.3)\right) * 0.5 * 0.00694$