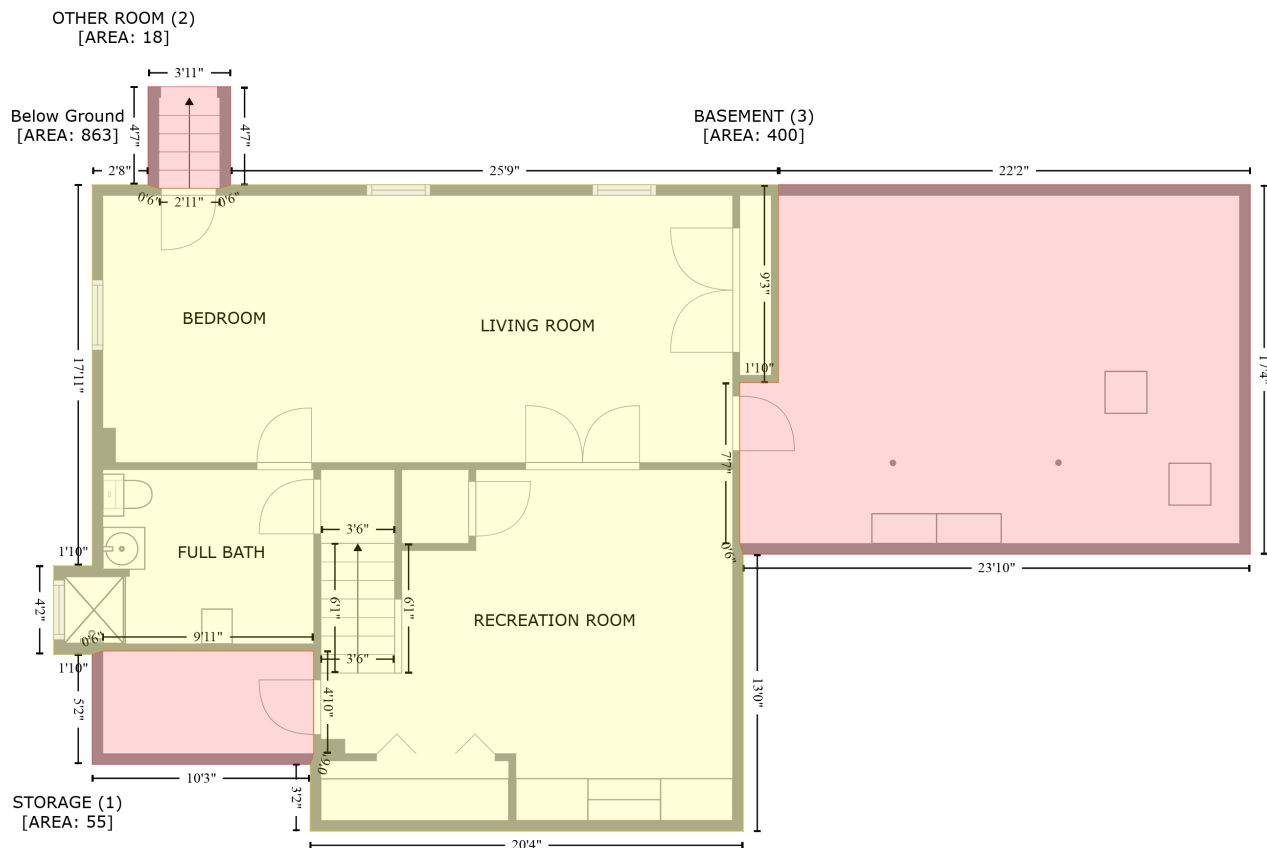


207 Whitney Street, Woodside, Northborough, Worcester County, Massachusetts, United States, 01532

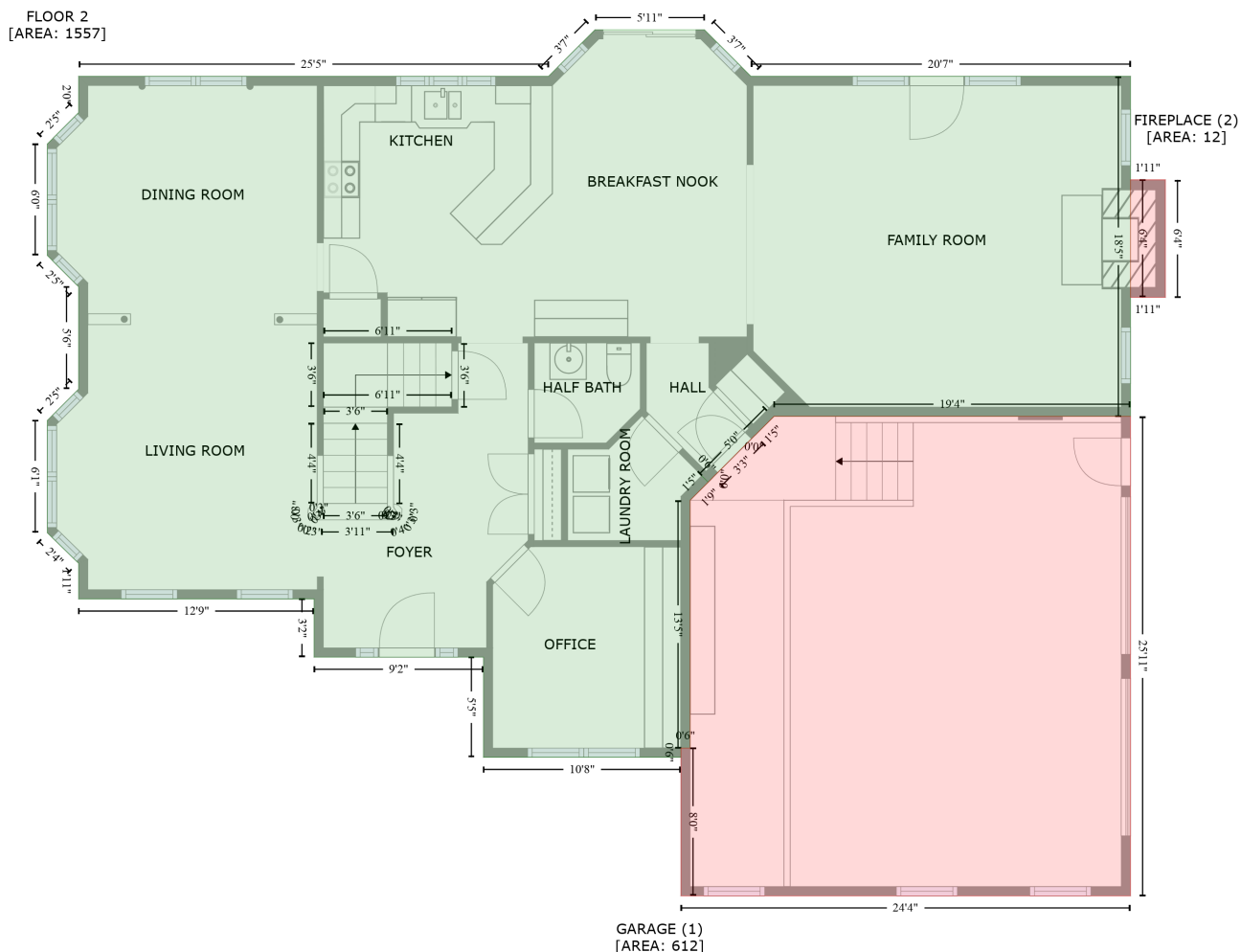
Gross Living Area: 3285 sq. ft



Space	Area (sq. ft)	Calculation <small>Coordinate Polygon Area Algorithm using inches</small>
Below Ground (Living area)	863	$-\left((97.3 + 103.3) * (77.1 - 79.1) + (103.3 + 137.9) * (79.1 - 79.1) + (137.9 + 143.9) * (79.1 - 77.1) + (143.9 + 452.9) * (77.1 - 77.1) + (452.9 + 452.9) * (77.1 - 188.6) + (452.9 + 431.1) * (188.6 - 188.6) + (431.1 + 431.1) * (188.6 - 279.5) + (431.1 + 433.1) * (279.5 - 285.5) + (433.1 + 433.1) * (285.5 - 441.8) + (433.1 + 188.8) * (441.8 - 441.8) + (188.8 + 188.8) * (441.8 - 404) + (188.8 + 190.8) * (404 - 398) + (190.8 + 190.8) * (398 - 340.1) + (190.8 + 71.8) * (340.1 - 340.1) + (71.8 + 65.8) * (340.1 - 342.1) + (65.8 + 44.1) * (342.1 - 342.1) + (44.1 + 44.1) * (342.1 - 292) + (44.1 + 65.8) * (292 - 292) + (65.8 + 65.8) * (292 - 77.1) + (65.8 + 97.3) * (77.1 - 77.1)\right) * 0.5 * 0.00694$
STORAGE (Non-living area)	55	$-\left((190.8 + 190.8) * (340.1 - 398) + (190.8 + 188.8) * (398 - 404) + (188.8 + 65.8) * (404 - 404) + (65.8 + 65.8) * (404 - 342.1) + (65.8 + 71.8) * (342.1 - 340.1) + (71.8 + 190.8) * (340.1 - 340.1)\right) * 0.5 * 0.00694$
OTHER ROOM (Non-living area)	18	$-\left((143.9 + 143.9) * (21.9 - 77.1) + (143.9 + 137.9) * (77.1 - 79.1) + (137.9 + 103.3) * (79.1 - 79.1) + (103.3 + 97.3) * (79.1 - 77.1) + (97.3 + 97.3) * (77.1 - 21.9) + (97.3 + 143.9) * (21.9 - 21.9)\right) * 0.5 * 0.00694$
BASEMENT (Non-living area)	400	$-\left((719.1 + 719.1) * (77.1 - 285.5) + (719.1 + 433.1) * (285.5 - 285.5) + (433.1 + 431.1) * (285.5 - 279.5) + (431.1 + 431.1) * (279.5 - 188.6) + (431.1 + 452.9) * (188.6 - 188.6) + (452.9 + 452.9) * (188.6 - 77.1) + (452.9 + 719.1) * (77.1 - 77.1)\right) * 0.5 * 0.00694$

207 Whitney Street, Woodside, Northborough, Worcester County, Massachusetts, United States, 01532

Gross Living Area: 3285 sq. ft



Space	Area (sq. ft)	Calculation
FLOOR 2 (Living area)	1557	$ \begin{aligned} & -((442.3 + 472.5) * (34.5 - 64.7) + (472.5 + 719.1) * (64.7 - 64.7) + (719.1 + 719.1) * (64.7 - 285.5) \\ & + (719.1 + 487.5) * (285.5 - 285.5) + (487.5 + 475.3) * (285.5 - 297.6) + (475.3 + 475.2) * \\ & (297.6 - 297.6) + (475.2 + 447.6) * (297.6 - 325.2) + (447.6 + 444.8) * (325.2 - 328.2) + (444.8 + \\ & 440.6) * (328.2 - 324) + (440.6 + 444.8) * (324 - 328.2) + (444.8 + 433.1) * (328.2 - 339.9) + \\ & (433.1 + 433.1) * (339.9 - 500.8) + (433.1 + 427.1) * (500.8 - 500.8) + (427.1 + 427.1) * (500.8 - \\ & 506.8) + (427.1 + 298.8) * (506.8 - 506.8) + (298.8 + 298.8) * (506.8 - 441.8) + (298.8 + 188.8) * \\ & (441.8 - 441.8) + (188.8 + 188.8) * (441.8 - 404) + (188.8 + 35.8) * (404 - 404) + (35.8 + 35.8) * \\ & (404 - 380.9) + (35.8 + 15.5) * (380.9 - 361) + (15.5 + 15.5) * (361 - 288.1) + (15.5 + 35.8) * \\ & (288.1 - 267.8) + (35.8 + 35.8) * (267.8 - 201.3) + (35.8 + 15.5) * (201.3 - 181) + (15.5 + 15.5) * \\ & (181 - 108.6) + (15.5 + 35.8) * (108.6 - 88.3) + (35.8 + 35.8) * (88.3 - 64.7) + (35.8 + 341.1) * \\ & (64.7 - 64.7) + (341.1 + 371.3) * (64.7 - 34.5) + (371.3 + 442.3) * (34.5 - 34.5)) * 0.5 * 0.00694 \end{aligned} $
GARAGE (Non-living area)	612	$ \begin{aligned} & -((719.1 + 719.1) * (285.5 - 596.7) + (719.1 + 427.1) * (596.7 - 596.7) + (427.1 + 427.1) * (596.7 - \\ & 500.8) + (427.1 + 433.1) * (500.8 - 500.8) + (433.1 + 433.1) * (500.8 - 339.9) + (433.1 + 447.6) * \\ & (339.9 - 325.4) + (447.6 + 447.6) * (325.4 - 325.2) + (447.6 + 475.2) * (325.2 - 297.6) + (475.2 + \\ & 475.3) * (297.6 - 297.6) + (475.3 + 487.5) * (297.6 - 285.5) + (487.5 + 719.1) * (285.5 - 285.5)) * \end{aligned} $

207 Whitney Street, Woodside, Northborough, Worcester County, Massachusetts, United States, 01532

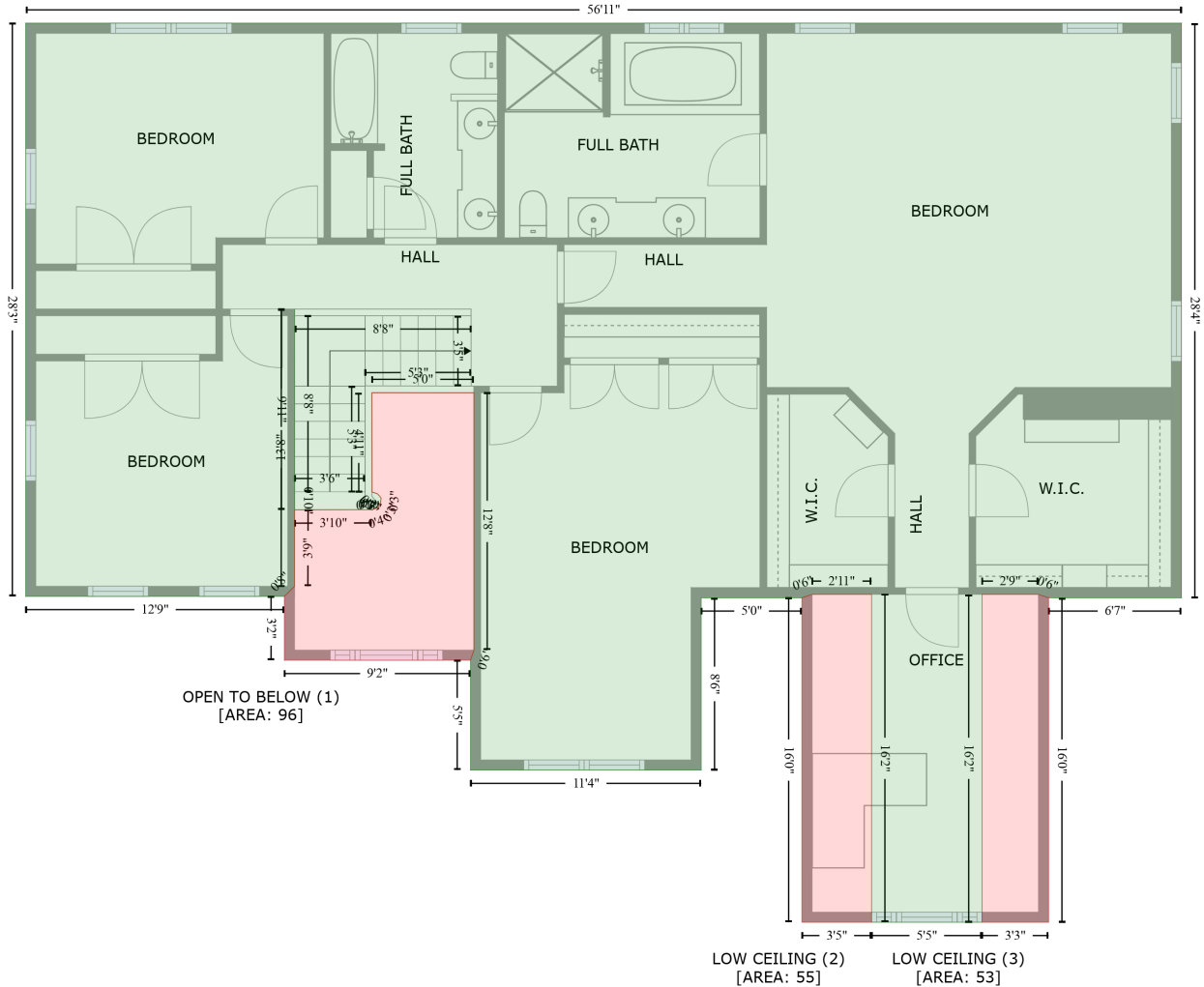
Gross Living Area: 3285 sq. ft

Space	Area (sq. ft)	Calculation <small>Coordinate Polygon Area Algorithm using inches</small>
FIREPLACE (Non-living area)	12	$0.5 * 0.00694$ $-((741.8 + 741.8) * (131.9 - 208.2) + (741.8 + 719.1) * (208.2 - 208.2) + (719.1 + 719.1) * (208.2 - 131.9) + (719.1 + 741.8) * (131.9 - 131.9)) * 0.5 * 0.00694$

207 Whitney Street, Woodside, Northborough, Worcester County, Massachusetts, United States, 01532

Gross Living Area: 3285 sq. ft

FLOOR 3
[AREA: 1728]



Space	Area (sq. ft)	Calculation
FLOOR 3 (Living area)	1728	Coordinate Polygon Area Algorithm using inches $-((719.1 + 719.1) * (64.7 - 404.8) + (719.1 + 640.6) * (404.8 - 404.8) + (640.6 + 634.6) * (404.8 - 402.8) + (634.6 + 601.2) * (402.8 - 402.8) + (601.2 + 601.2) * (402.8 - 596.9) + (601.2 + 535.9) * (596.9 - 596.9) + (535.9 + 535.9) * (596.9 - 402.8) + (535.9 + 500.7) * (402.8 - 402.8) + (500.7 + 494.7) * (402.8 - 404.8) + (494.7 + 435.2) * (404.8 - 404.8) + (435.2 + 435.2) * (404.8 - 506.8) + (435.2 + 298.8) * (506.8 - 506.8) + (298.8 + 298.8) * (506.8 - 441.8) + (298.8 + 300.8) * (441.8 - 435.8) + (300.8 + 300.8) * (435.8 - 283.4) + (300.8 + 240.5) * (283.4 - 283.4) + (240.5 + 240.6) * (283.4 - 342.2) + (240.6 + 241.1) * (342.2 - 342.4) + (241.1 + 243.8) * (342.4 - 343.3) + (243.8 + 245.9) * (343.3 - 345.7) + (245.9 + 245.7) * (345.7 - 348.5) + (245.7 + 244) * (348.5 - 351.6) + (244 + 240.5) * (351.6 - 352.6) + (240.5 + 194.9) * (352.6 - 352.8) + (194.9 + 194.8) * (352.8 - 233.8) + (194.8 + 194.8) * (233.8 - 398) + (194.8 + 188.8) * (398 - 404) + (188.8 + 35.8) * (404 - 404) + (35.8 + 35.8) * (404 - 64.7) + (35.8 + 719.1) * (64.7 - 64.7)) * 0.5 * 0.00694$

207 Whitney Street, Woodside, Northborough, Worcester County, Massachusetts, United States, 01532

Gross Living Area: 3285 sq. ft

Space	Area (sq. ft)	Calculation <small>Coordinate Polygon Area Algorithm using inches</small>
OPEN TO BELOW (Non-living area)	96	$-\left((300.8 + 300.8) * (283.4 - 435.8) + (300.8 + 298.8) * (435.8 - 441.8) + (298.8 + 188.8) * (441.8 - 441.8) + (188.8 + 188.8) * (441.8 - 404) + (188.8 + 194.8) * (404 - 398) + (194.8 + 194.9) * (398 - 352.8) + (194.9 + 240.5) * (352.8 - 352.6) + (240.5 + 244) * (352.6 - 351.6) + (244 + 245.7) * (351.6 - 348.5) + (245.7 + 245.9) * (348.5 - 345.7) + (245.9 + 243.8) * (345.7 - 343.3) + (243.8 + 241.1) * (343.3 - 342.4) + (241.1 + 240.6) * (342.4 - 342.2) + (240.6 + 240.5) * (342.2 - 283.4) + (240.5 + 300.8) * (283.4 - 283.4)\right) * 0.5 * 0.00694$
LOW CEILING (Non-living area)	55	$-\left((535.9 + 535.9) * (402.8 - 596.9) + (535.9 + 494.7) * (596.9 - 596.9) + (494.7 + 494.7) * (596.9 - 404.8) + (494.7 + 500.7) * (404.8 - 402.8) + (500.7 + 535.9) * (402.8 - 402.8)\right) * 0.5 * 0.00694$
LOW CEILING (Non-living area)	53	$-\left((634.6 + 640.6) * (402.8 - 404.8) + (640.6 + 640.6) * (404.8 - 596.9) + (640.6 + 601.2) * (596.9 - 596.9) + (601.2 + 601.2) * (596.9 - 402.8) + (601.2 + 634.6) * (402.8 - 402.8)\right) * 0.5 * 0.00694$