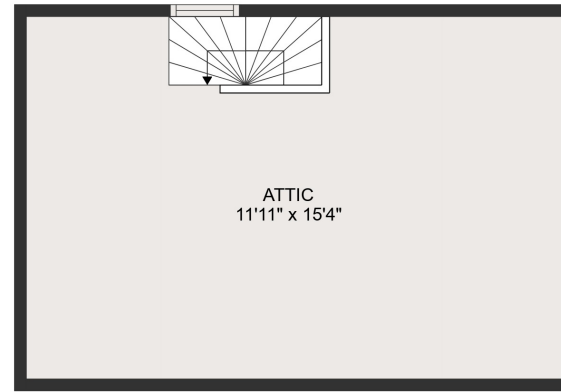




FLOOR 2



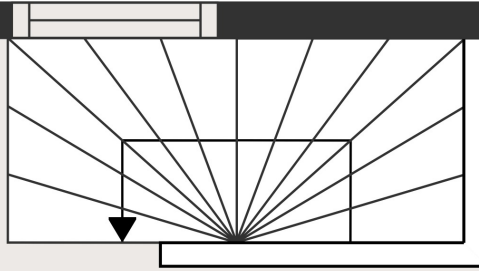
FLOOR 3



FLOOR 1

GROSS INTERNAL AREA
 FLOOR 1: 500 sq. ft, FLOOR 2: 438 sq. ft, FLOOR 3: 0 sq. ft
 EXCLUDED AREAS: LOW CEILING: 165 sq. ft, ATTIC: 183 sq. ft
 TOTAL: 938 sq. ft

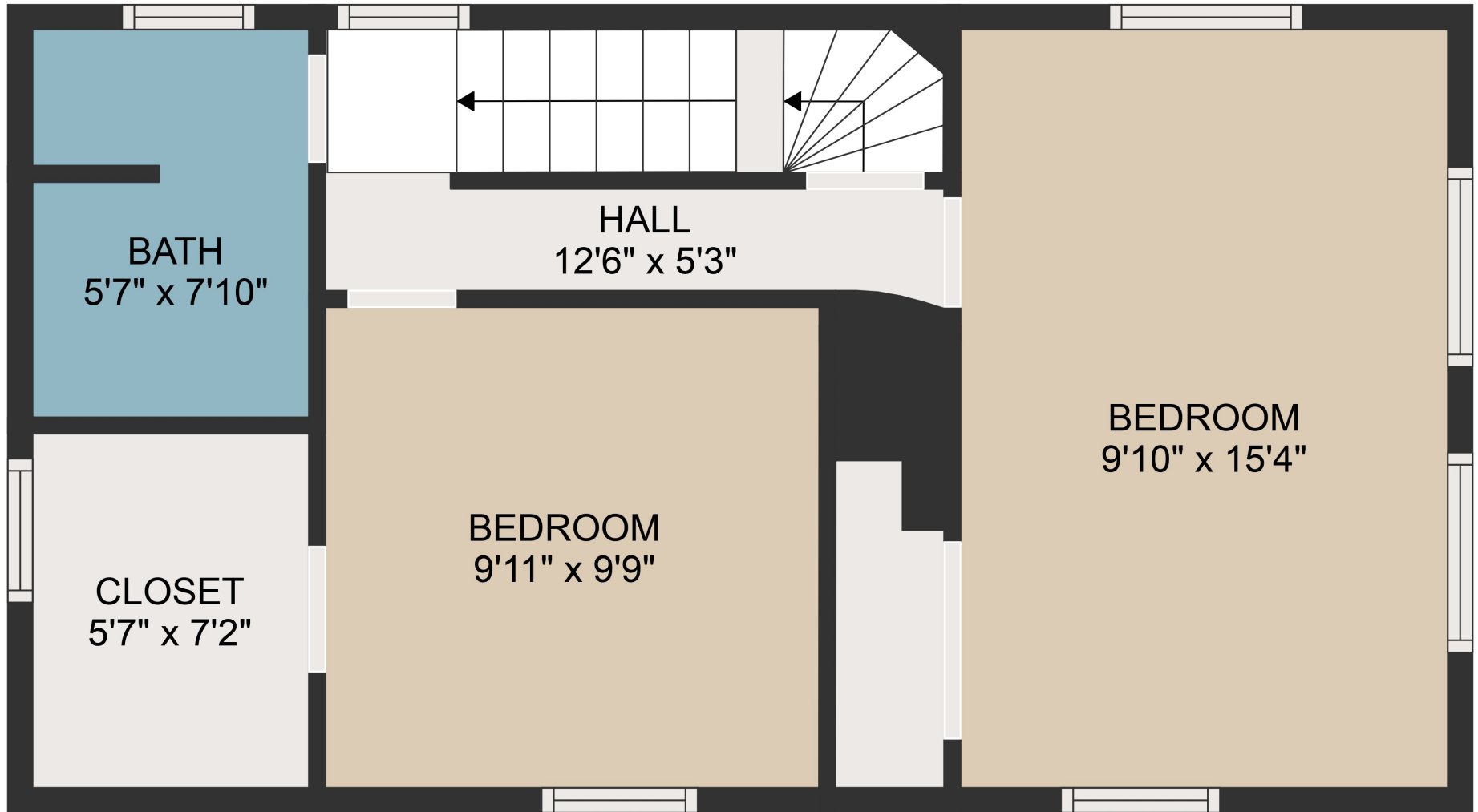
MEASUREMENTS ARE DEEMED HIGHLY RELIABLE BUT NOT GUARANTEED.



ATTIC
11'11" x 15'4"

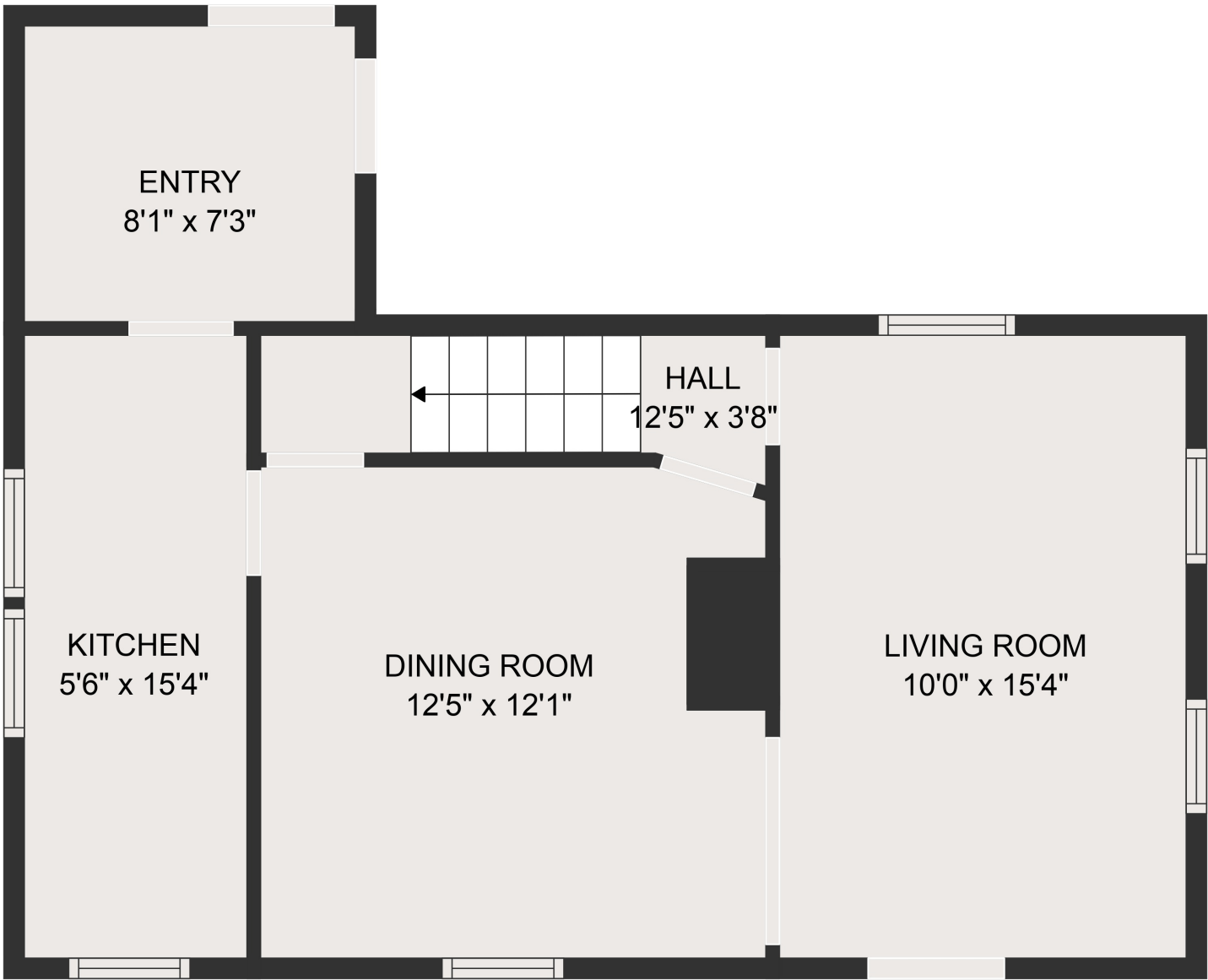
GROSS INTERNAL AREA
FLOOR 1: 500 sq. ft, FLOOR 2: 438 sq. ft, FLOOR 3: 0 sq. ft
EXCLUDED AREAS: LOW CEILING: 165 sq. ft, ATTIC: 183 sq. ft
TOTAL: 938 sq. ft

MEASUREMENTS ARE DEEMED HIGHLY RELIABLE BUT NOT GUARANTEED.



GROSS INTERNAL AREA
FLOOR 1: 500 sq. ft, FLOOR 2: 438 sq. ft, FLOOR 3: 0 sq. ft
EXCLUDED AREAS: LOW CEILING: 165 sq. ft, ATTIC: 183 sq. ft
TOTAL: 938 sq. ft

MEASUREMENTS ARE DEEMED HIGHLY RELIABLE BUT NOT GUARANTEED.



GROSS INTERNAL AREA
FLOOR 1: 500 sq. ft, FLOOR 2: 438 sq. ft, FLOOR 3: 0 sq. ft
EXCLUDED AREAS: LOW CEILING: 165 sq. ft, ATTIC: 183 sq. ft
TOTAL: 938 sq. ft

MEASUREMENTS ARE DEEMED HIGHLY RELIABLE BUT NOT GUARANTEED.