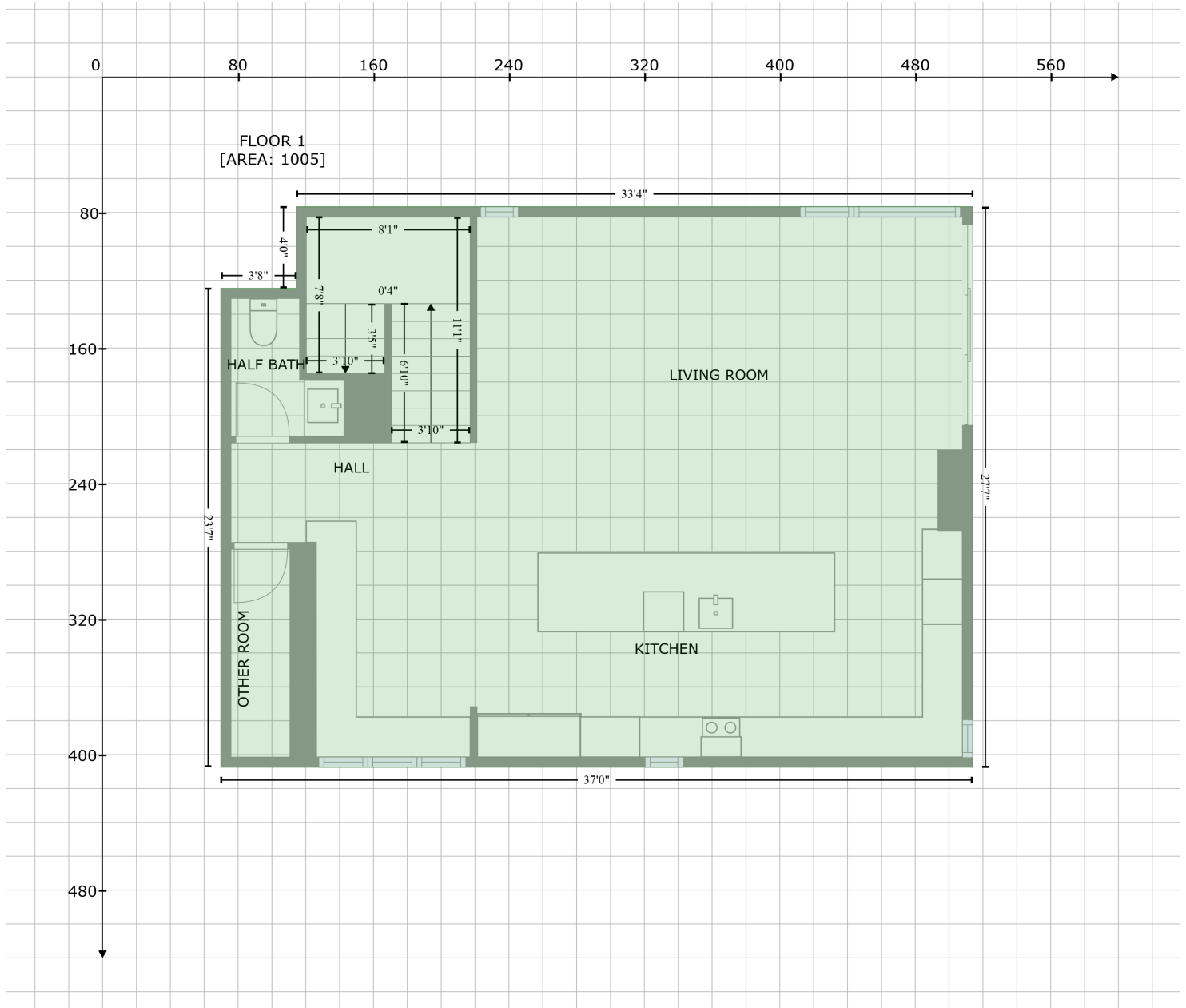


# 15321 Mc Cormick Mountain Drive, Hudson Bend, Austin, Travis County, Texas, United States, 78734

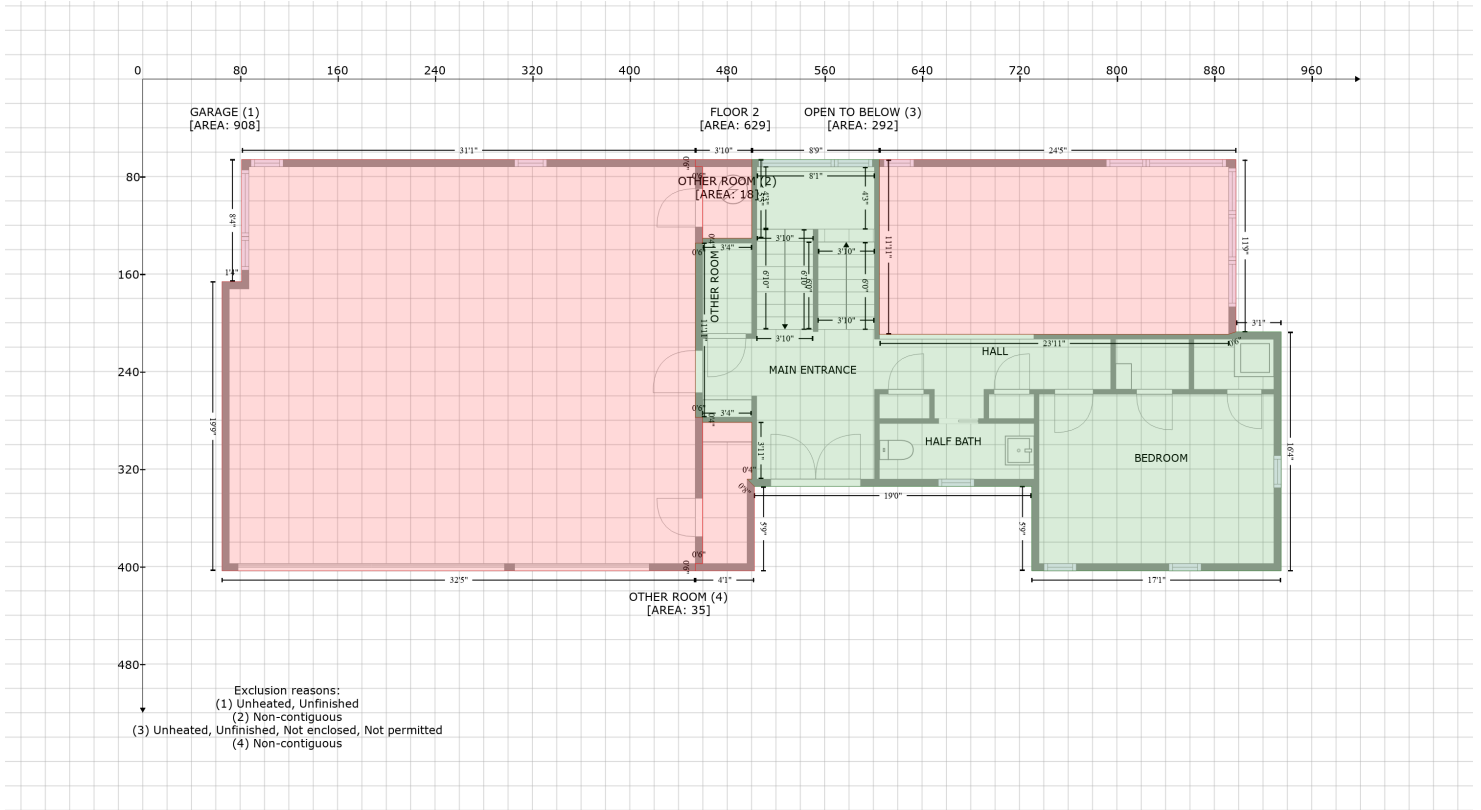
Gross Living Area: 3566 sq. ft



Space	Area (sq. ft)	Calculation <small>Coordinate Polygon Area Algorithm using inches</small>
FLOOR 1 (Living area)	1005	$-\left((513.9 + 513.9) * (76.6 - 407.5) + (513.9 + 69.9) * (407.5 - 407.5) + (69.9 + 69.9) * (407.5 - 124.7) + (69.9 + 114.3) * (124.7 - 124.7) + (114.3 + 114.3) * (124.7 - 76.6) + (114.3 + 513.9) * (76.6 - 76.6)\right) * 0.5 * 0.00694$

# 15321 Mc Cormick Mountain Drive, Hudson Bend, Austin, Travis County, Texas, United States, 78734

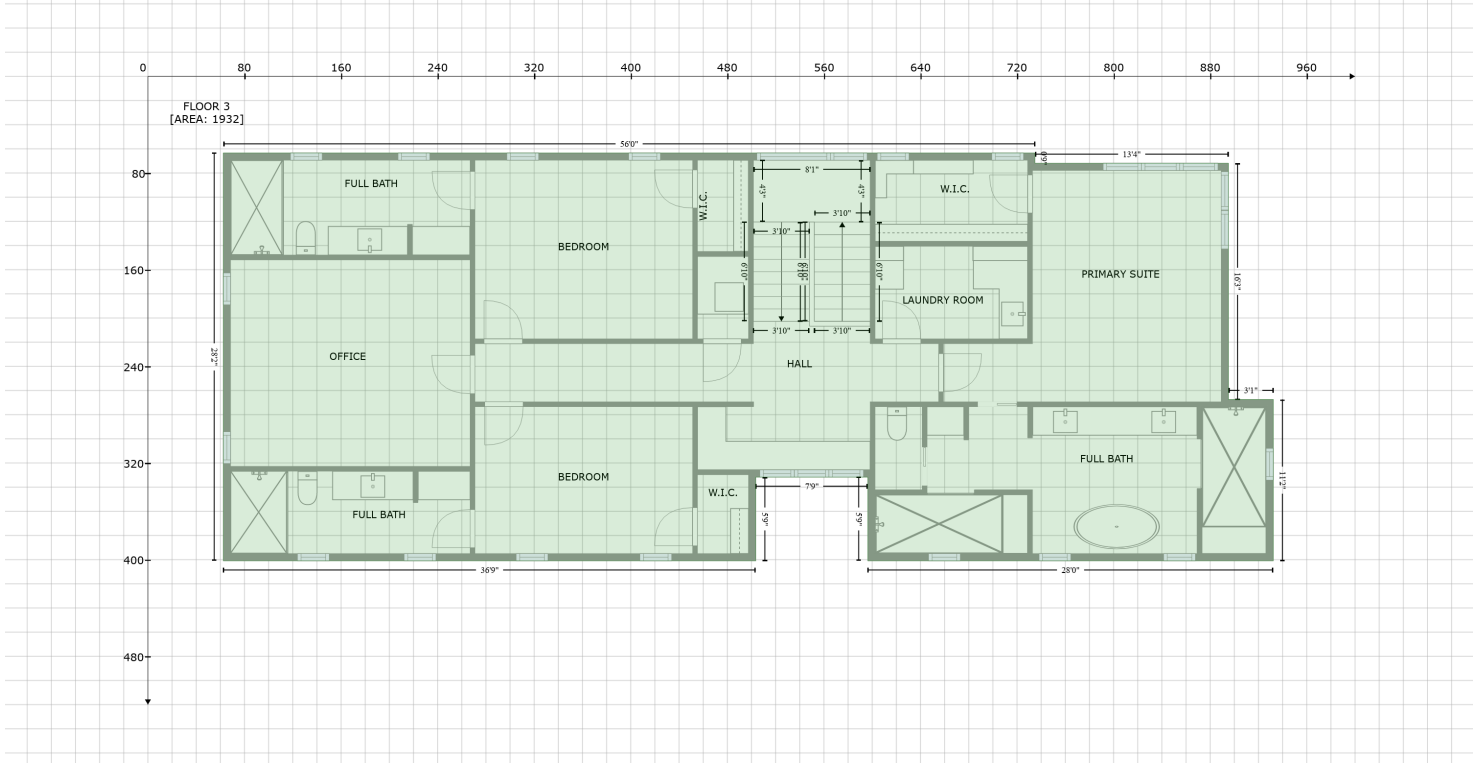
Gross Living Area: 3566 sq. ft



Space	Area (sq. ft)	Calculation
FLOOR 2 (Living area)	629	$-\left((605 + 605) * (66 - 209.4) + (605 + 891.8) * (209.4 - 209.4) + (891.8 + 897.8) * (209.4 - 207.4) + (897.8 + 934.9) * (207.4 - 207.4) + (934.9 + 934.9) * (207.4 - 403.6) + (934.9 + 730) * (403.6 - 403.6) + (730 + 730) * (403.6 - 334.3) + (730 + 502.3) * (334.3 - 334.3) + (502.3 + 496.3) * (334.3 - 328.3) + (496.3 + 500.2) * (328.3 - 328.3) + (500.2 + 500.2) * (328.3 - 281.7) + (500.2 + 459.7) * (281.7 - 281.7) + (459.7 + 459.7) * (281.7 - 277.7) + (459.7 + 453.7) * (277.7 - 277.7) + (453.7 + 453.7) * (277.7 - 134.6) + (453.7 + 459.7) * (134.6 - 134.6) + (459.7 + 459.7) * (134.6 - 130.6) + (459.7 + 500.2) * (130.6 - 130.6) + (500.2 + 500.2) * (130.6 - 66) + (500.2 + 605) * (66 - 66)\right) * 0.5 * 0.00694$
GARAGE (Non-living area)	908	$-\left((453.7 + 453.7) * (66 - 72) + (453.7 + 459.7) * (72 - 72) + (459.7 + 459.7) * (72 - 134.6) + (459.7 + 453.7) * (134.6 - 134.6) + (453.7 + 453.7) * (134.6 - 277.7) + (453.7 + 459.7) * (277.7 - 277.7) + (459.7 + 459.7) * (277.7 - 397.6) + (459.7 + 453.7) * (397.6 - 397.6) + (453.7 + 453.7) * (397.6 - 403.6) + (453.7 + 65.1) * (403.6 - 403.6) + (65.1 + 65.1) * (403.6 - 166.3) + (65.1 + 81.2) * (166.3 - 166.3) + (81.2 + 81.2) * (166.3 - 66) + (81.2 + 453.7) * (66 - 66)\right) * 0.5 * 0.00694$
OTHER ROOM (Non-living area)	18	$-\left((500.2 + 500.2) * (66 - 130.6) + (500.2 + 459.7) * (130.6 - 130.6) + (459.7 + 459.7) * (130.6 - 72) + (459.7 + 453.7) * (72 - 72) + (453.7 + 453.7) * (72 - 66) + (453.7 + 500.2) * (66 - 66)\right) * 0.5 * 0.00694$
OPEN TO BELOW (Non-living area)	292	$-\left((897.8 + 897.8) * (66 - 207.4) + (897.8 + 891.8) * (207.4 - 209.4) + (891.8 + 605) * (209.4 - 209.4) + (605 + 605) * (209.4 - 66) + (605 + 897.8) * (66 - 66)\right) * 0.5 * 0.00694$
OTHER ROOM (Non-living area)	35	$-\left((500.2 + 500.2) * (281.7 - 328.3) + (500.2 + 496.3) * (328.3 - 328.3) + (496.3 + 502.3) * (328.3 - 334.3) + (502.3 + 502.3) * (334.3 - 403.6) + (502.3 + 453.7) * (403.6 - 403.6) + (453.7 + 453.7) * (403.6 - 397.6) + (453.7 + 459.7) * (397.6 - 397.6) + (459.7 + 459.7) * (397.6 - 281.7) + (459.7 + 500.2) * (281.7 - 281.7)\right) * 0.5 * 0.00694$

# 15321 Mc Cormick Mountain Drive, Hudson Bend, Austin, Travis County, Texas, United States, 78734

Gross Living Area: 3566 sq. ft



Space	Area (sq. ft)	Calculation
FLOOR 3 (Living area)	1932	Coordinate Polygon Area Algorithm using inches $-((734.8 + 734.8) * (63.4 - 71.9) + (734.8 + 895.1) * (71.9 - 71.9) + (895.1 + 895.1) * (71.9 - 267.4) + (895.1 + 932.3) * (267.4 - 267.4) + (932.3 + 932.3) * (267.4 - 401) + (932.3 + 596.4) * (401 - 401) + (596.4 + 596.4) * (401 - 331.7) + (596.4 + 503.6) * (331.7 - 331.7) + (503.6 + 503.6) * (331.7 - 401) + (503.6 + 62.4) * (401 - 401) + (62.4 + 62.4) * (401 - 63.4) + (62.4 + 734.8) * (63.4 - 63.4)) * 0.5 * 0.00694$