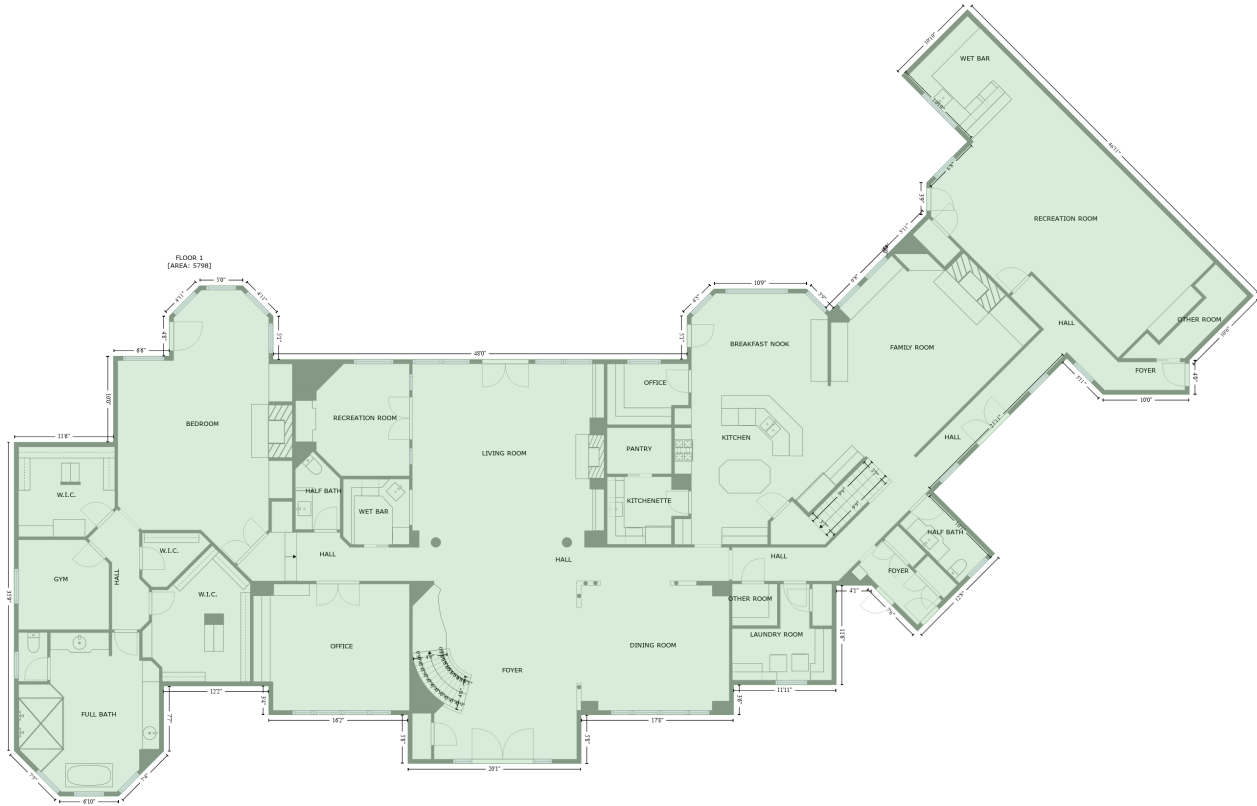


3400 Vintage Drive, Oak Bluff Estates, Round Rock, Williamson County, Texas, United States, 78664

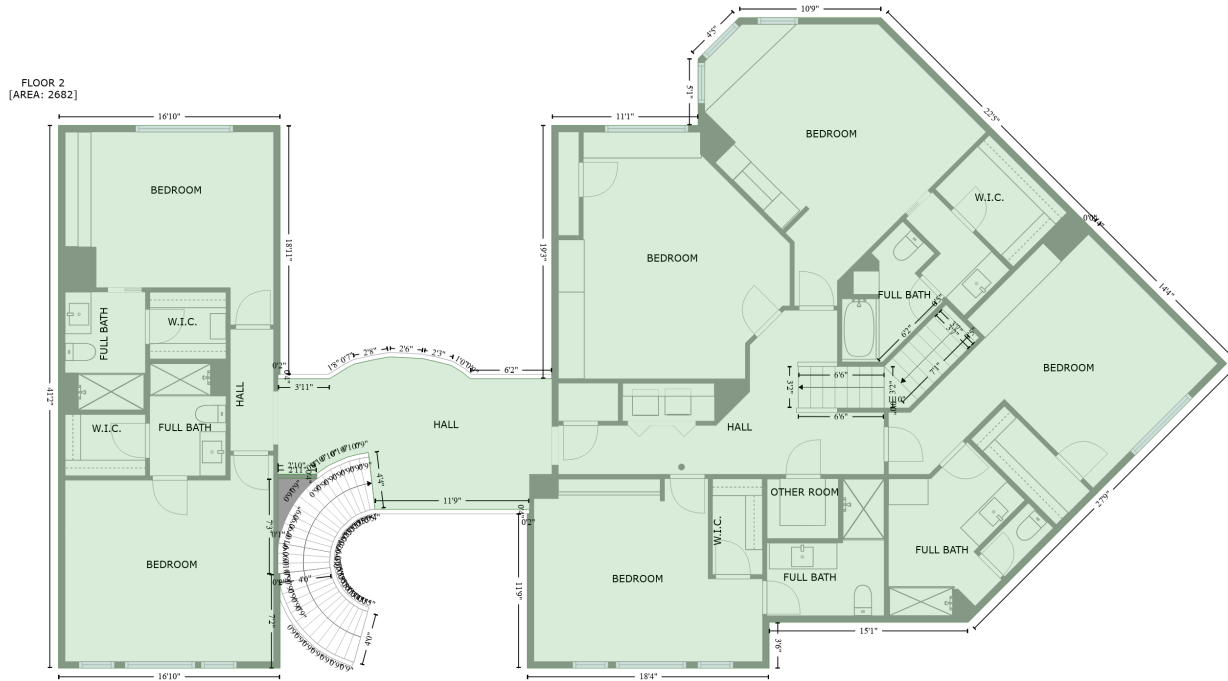
Gross Living Area: 8480 sq. ft



Space	Area (sq. ft)	Calculation
FLOOR 1 (Living area)	5798	Coordinate Polygon Area Algorithm using inches $-((1014.6 + 1412.8) * (317.1 - 715.3) + (1412.8 + 1323.4) * (715.3 - 804.7) + (1323.4 + 1323.4) * (804.7 - 852.4) + (1323.4 + 1203.1) * (852.4 - 852.4) + (1203.1 + 1152.9) * (852.4 - 802.2) + (1152.9 + 967) * (802.2 - 988.1) + (967 + 1052.6) * (988.1 - 1073.7) + (1052.6 + 944.8) * (1073.7 - 1181.5) + (944.8 + 881.3) * (1181.5 - 1117.9) + (881.3 + 831.9) * (1117.9 - 1117.9) + (831.9 + 831.9) * (1117.9 - 1256.1) + (831.9 + 688.9) * (1256.1 - 1256.1) + (688.9 + 688.9) * (1256.1 - 1297.9) + (688.9 + 476.7) * (1297.9 - 1297.9) + (476.7 + 476.7) * (1297.9 - 1365.7) + (476.7 + 235.7) * (1365.7 - 1365.7) + (235.7 + 235.7) * (1365.7 - 1297.9) + (235.7 + 41.9) * (1297.9 - 1297.9) + (41.9 + 41.9) * (1297.9 - 1257.9) + (41.9 + -104.5) * (1257.9 - 1257.9) + (-104.5 + -104.5) * (1257.9 - 1348.5) + (-104.5 + -167) * (1348.5 - 1411) + (-167 + -249.4) * (1411 - 1411) + (-249.4 + -312.5) * (1411 - 1348) + (-312.5 + -312.5) * (1348 - 919) + (-312.5 + -174.3) * (919 - 919) + (-174.3 + -174.3) * (919 - 799.3) + (-174.3 + -96.5) * (799.3 - 799.3) + (-96.5 + -96.5) * (799.3 - 743.2) + (-96.5 + -54.5) * (743.2 - 701.2) + (-54.5 + 5.8) * (701.2 - 701.2) + (5.8 + 47.9) * (701.2 - 743.3) + (47.9 + 47.9) * (743.3 - 803.8) + (47.9 + 624.3) * (803.8 - 803.8) + (624.3 + 624.3) * (803.8 - 743.1) + (624.3 + 661.6) * (743.1 - 705.7) + (661.6 + 790.8) * (705.7 - 705.7) + (790.8 + 822.6) * (705.7 - 737.5) + (822.6 + 904.9) * (737.5 - 655.2) + (904.9 + 907.6) * (655.2 - 652.8) + (907.6 + 907.6) * (652.8 - 652.5) + (907.6 + 957.8) * (652.5 - 602.3) + (957.8 + 957.8) * (602.3 - 557.7) + (957.8 + 1014.6) * (557.7 - 500.8) + (1014.6 + 922.7) * (500.8 - 408.9) + (922.7 + 1014.6) * (408.9 - 317.1)) * 0.5 * 0.00694$

3400 Vintage Drive, Oak Bluff Estates, Round Rock, Williamson County, Texas, United States, 78664

Gross Living Area: 8480 sq. ft



Space	Area (sq. ft)	Calculation
FLOOR 2 (Living area)	2682	$ \begin{aligned} & -((790.8 + 981.1) * (705.7 - 896) + (981.1 + 981.2) * (896 - 896) + (981.2 + 983.9) * (896 - 898.8) \\ & + (983.9 + 1105.7) * (898.8 - 1020.6) + (1105.7 + 870.2) * (1020.6 - 1256.1) + (870.2 + 688.9) * \\ & (1256.1 - 1256.1) + (688.9 + 688.9) * (1256.1 - 1297.9) + (688.9 + 468.7) * (1297.9 - 1297.9) + \\ & (468.7 + 468.7) * (1297.9 - 1157.3) + (468.7 + 470.7) * (1157.3 - 1157.3) + (470.7 + 470.7) * \\ & (1157.3 - 1153.3) + (470.7 + 330.1) * (1153.3 - 1153.3) + (330.1 + 323.9) * (1153.3 - 1101.6) + \\ & (323.9 + 314.7) * (1101.6 - 1103.3) + (314.7 + 305.3) * (1103.3 - 1105.7) + (305.3 + 296.4) * \\ & (1105.7 - 1109.4) + (296.4 + 287.4) * (1109.4 - 1113.6) + (287.4 + 279.6) * (1113.6 - 1119) + \\ & (279.6 + 276.1) * (1119 - 1121.1) + (276.1 + 241.7) * (1121.1 - 1121.4) + (241.7 + 277.2) * \\ & (1121.4 - 1121.4) + (277.2 + 277.2) * (1121.4 - 1125.4) + (277.2 + 241.7) * (1125.4 - 1125.4) + \\ & (241.7 + 241.7) * (1125.4 - 1212.2) + (241.7 + 243.7) * (1212.2 - 1212.2) + (243.7 + 243.7) * \\ & (1212.2 - 1297.9) + (243.7 + 41.9) * (1297.9 - 1297.9) + (41.9 + 41.9) * (1297.9 - 803.8) + (41.9 + \\ & 243.7) * (803.8 - 803.8) + (243.7 + 243.7) * (803.8 - 1030.4) + (243.7 + 241.7) * (1030.4 - 1030.4) \\ & + (241.7 + 241.7) * (1030.4 - 1034.4) + (241.7 + 288.6) * (1034.4 - 1034.4) + (288.6 + 305.3) * \\ & (1034.4 - 1024.1) + (305.3 + 311.6) * (1024.1 - 1020.9) + (311.6 + 343) * (1020.9 - 1014.6) + \\ & (343 + 373.1) * (1014.6 - 1016.1) + (373.1 + 399.4) * (1016.1 - 1022.3) + (399.4 + 410) * (1022.3 \\ & - 1028.7) + (410 + 416.8) * (1028.7 - 1034.4) + (416.8 + 491) * (1034.4 - 1034.4) + (491 + 491) * \\ & (1034.4 - 803.8) + (491 + 624.3) * (803.8 - 803.8) + (624.3 + 624.3) * (803.8 - 743.1) + (624.3 + \\ & 661.6) * (743.1 - 705.7) + (661.6 + 790.8) * (705.7 - 705.7)) * 0.5 * 0.00694 \end{aligned} $