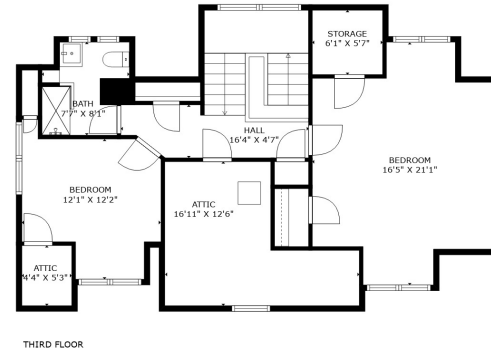
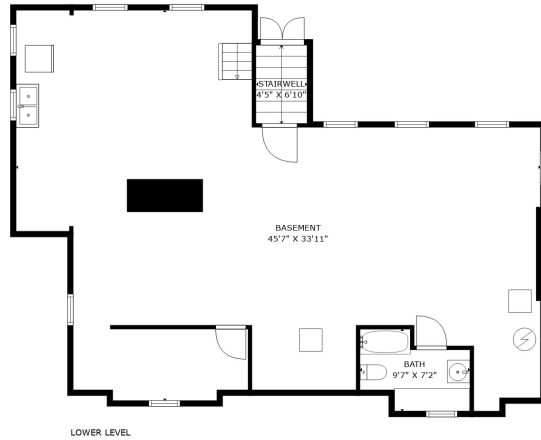
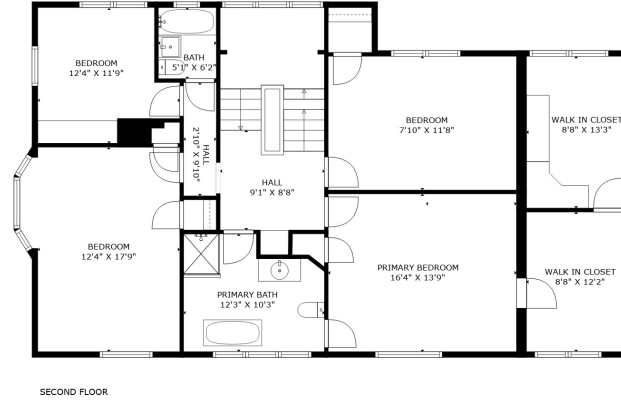
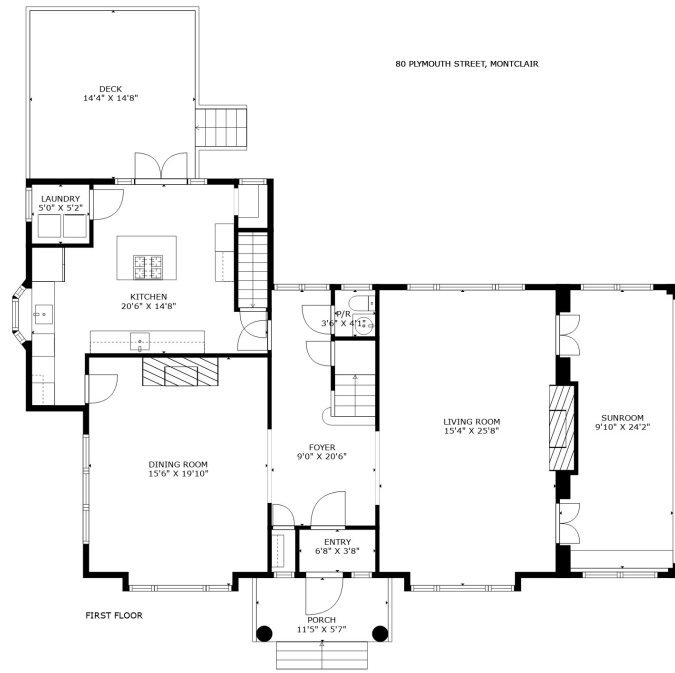


80 PLYMOUTH STREET, MONTCLAIR



**TOTAL: 3574 sq. ft**

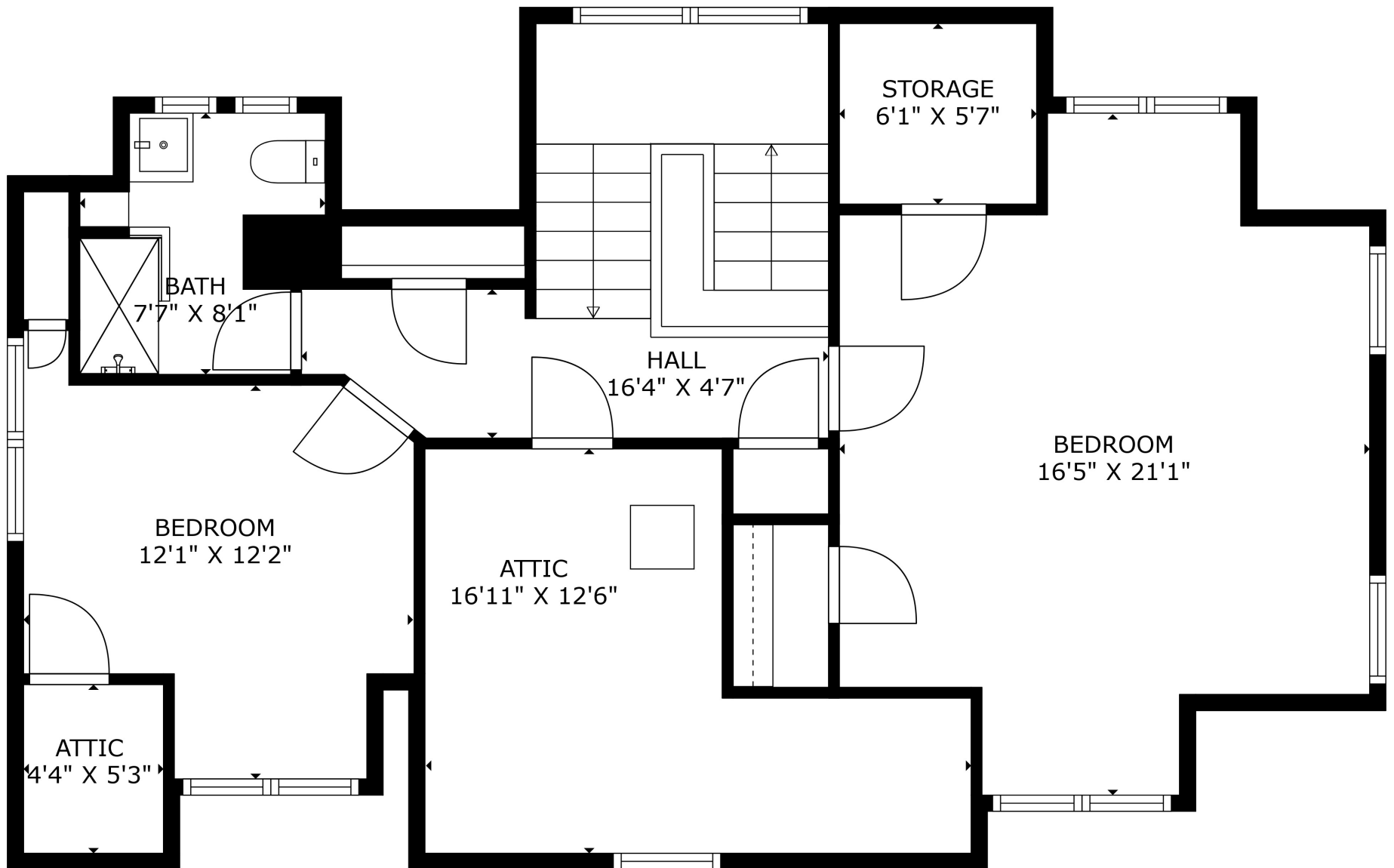
Below Ground: 0 sq. ft, FIRST FLOOR: 1513 sq. ft, SECOND FLOOR: 1436 sq. ft, THIRD FLOOR: 625 sq. ft

EXCLUDED AREAS: BASEMENT: 1156 sq. ft, BATH: 53 sq. ft, STAIRWELL: 30 sq. ft,

PORCH: 64 sq. ft, DECK: 225 sq. ft, EMBEDDED WINDOW: 16 sq. ft,

LOW CEILING: 60 sq. ft, " ": 50 sq. ft, ATTIC: 50 sq. ft,

ATTIC STORAGE: 102 sq. ft



**TOTAL: 3574 sq. ft**

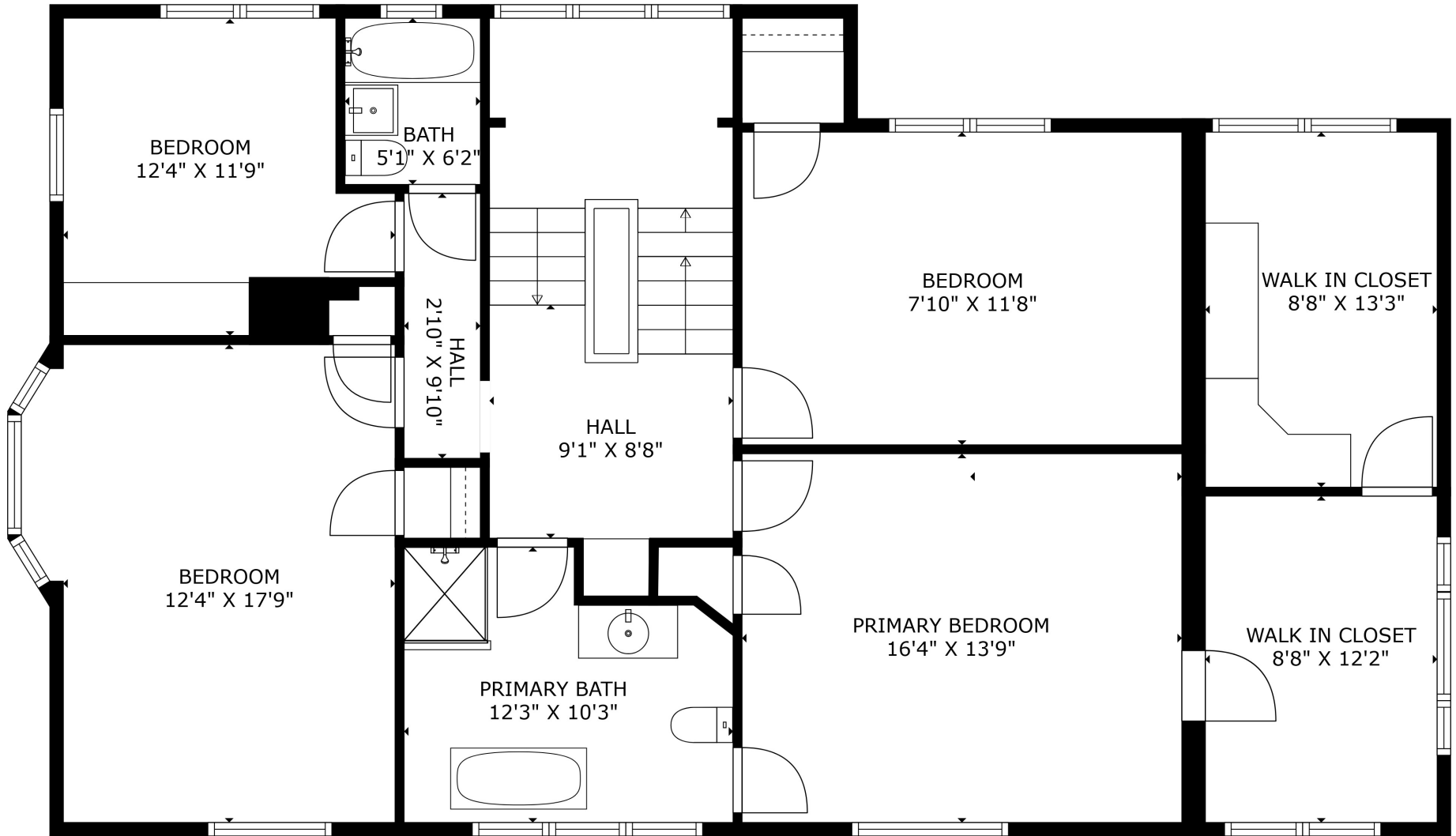
Below Ground: 0 sq. ft, FIRST FLOOR: 1513 sq. ft, SECOND FLOOR: 1436 sq. ft, THIRD FLOOR: 625 sq. ft

EXCLUDED AREAS: BASEMENT: 1156 sq. ft, BATH: 53 sq. ft, STAIRWELL: 30 sq. ft,

PORCH: 64 sq. ft, DECK: 225 sq. ft, EMBEDDED WINDOW: 16 sq. ft,

LOW CEILING: 60 sq. ft, " ": 50 sq. ft, ATTIC: 50 sq. ft,

ATTIC STORAGE: 102 sq. ft



**TOTAL: 3574 sq. ft**

Below Ground: 0 sq. ft, FIRST FLOOR: 1513 sq. ft, SECOND FLOOR: 1436 sq. ft, THIRD FLOOR: 625 sq. ft

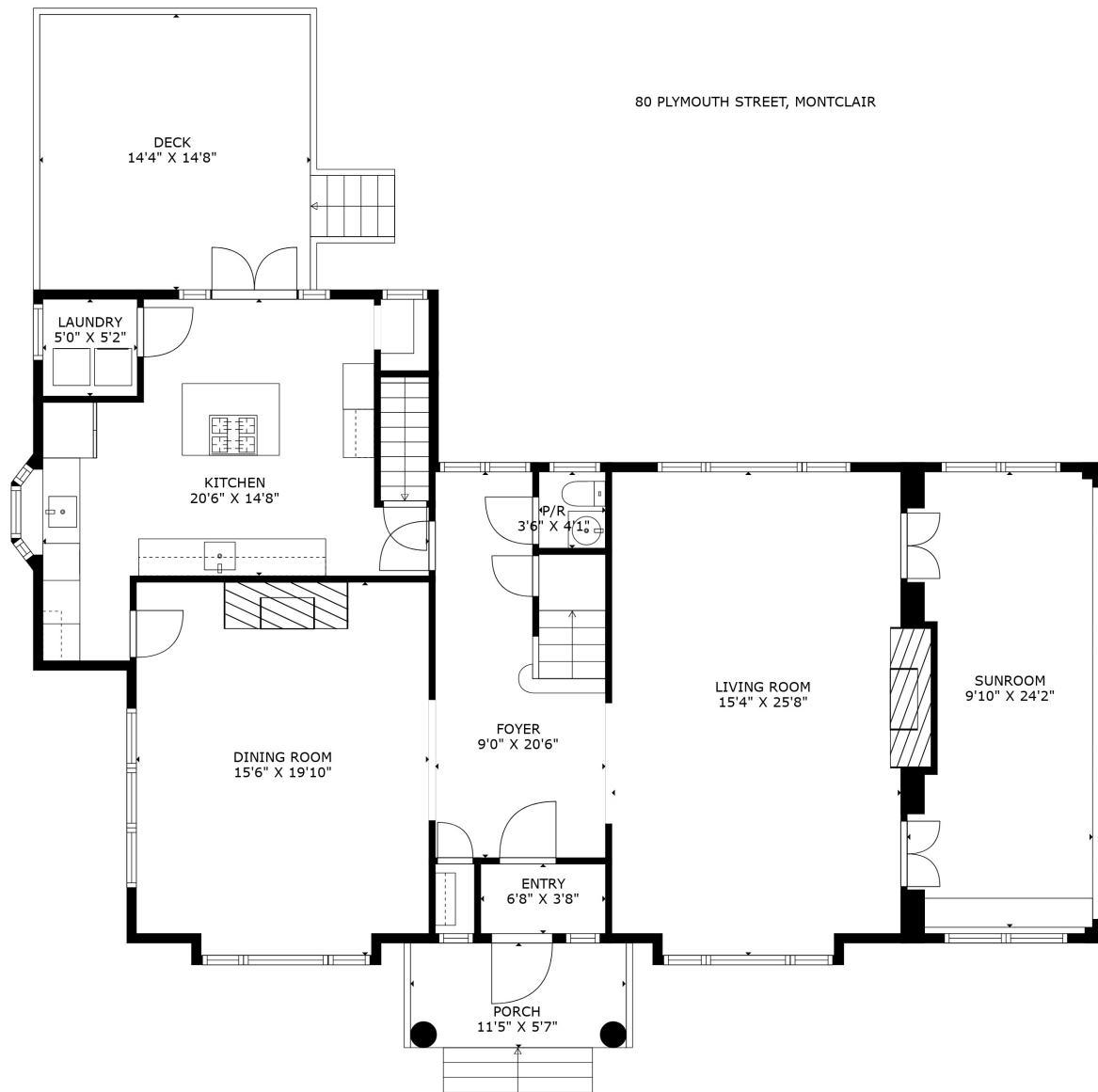
EXCLUDED AREAS: BASEMENT: 1156 sq. ft, BATH: 53 sq. ft, STAIRWELL: 30 sq. ft,

PORCH: 64 sq. ft, DECK: 225 sq. ft, EMBEDDED WINDOW: 16 sq. ft,

LOW CEILING: 60 sq. ft, " ": 50 sq. ft, ATTIC: 50 sq. ft,

ATTIC STORAGE: 102 sq. ft

80 PLYMOUTH STREET, MONTCLAIR



**TOTAL: 3574 sq. ft**

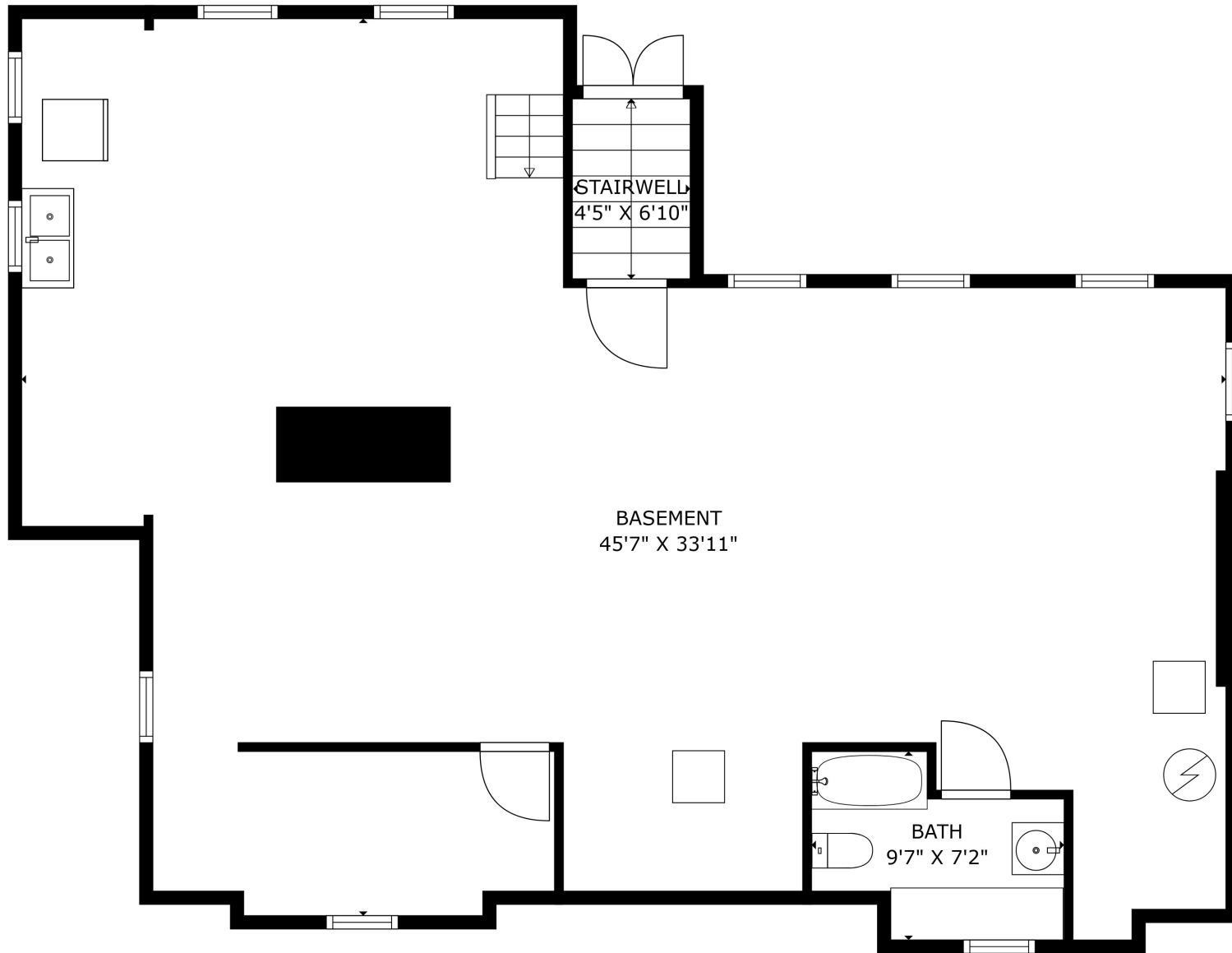
Below Ground: 0 sq. ft, FIRST FLOOR: 1513 sq. ft, SECOND FLOOR: 1436 sq. ft, THIRD FLOOR: 625 sq. ft

EXCLUDED AREAS: BASEMENT: 1156 sq. ft, BATH: 53 sq. ft, STAIRWELL: 30 sq. ft,

PORCH: 64 sq. ft, DECK: 225 sq. ft, EMBEDDED WINDOW: 16 sq. ft,

LOW CEILING: 60 sq. ft, " ": 50 sq. ft, ATTIC: 50 sq. ft,

ATTIC STORAGE: 102 sq. ft



**TOTAL: 3574 sq. ft**  
 Below Ground: 0 sq. ft, FIRST FLOOR: 1513 sq. ft, SECOND FLOOR: 1436 sq. ft, THIRD FLOOR: 625 sq. ft  
 EXCLUDED AREAS: BASEMENT: 1156 sq. ft, BATH: 53 sq. ft, STAIRWELL: 30 sq. ft,  
 PORCH: 64 sq. ft, DECK: 225 sq. ft, EMBEDDED WINDOW: 16 sq. ft,  
 LOW CEILING: 60 sq. ft, " ": 50 sq. ft, ATTIC: 50 sq. ft,  
 ATTIC STORAGE: 102 sq. ft