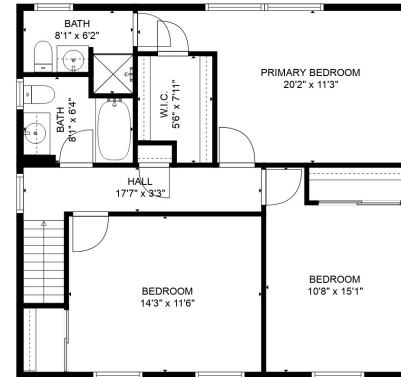
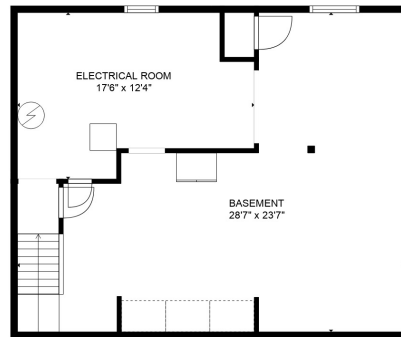


FLOOR 2



FLOOR 3



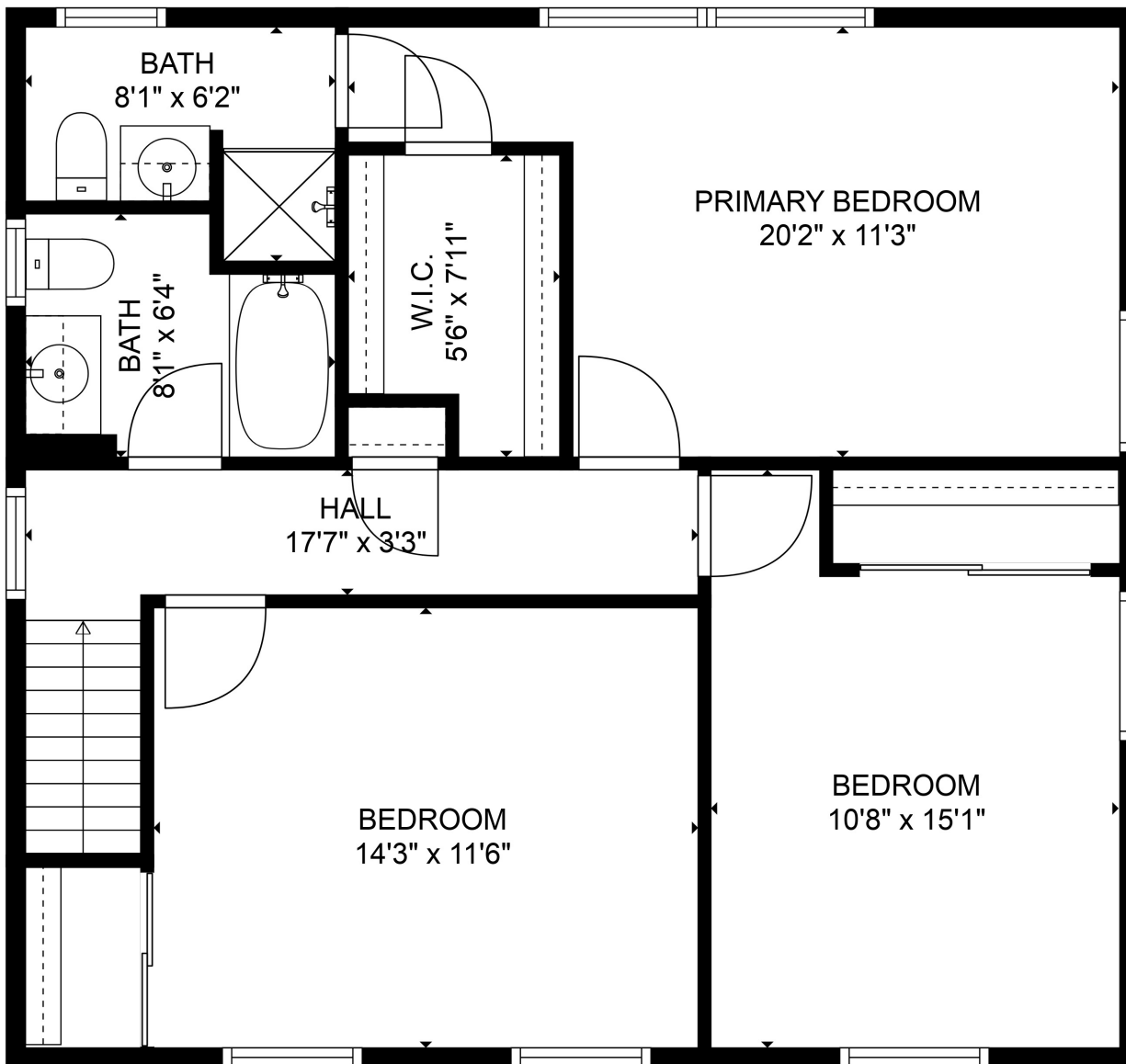
FLOOR 1

TOTAL: 2382 sq. ft

Below Ground: 10 sq. ft, FLOOR 2: 1608 sq. ft, FLOOR 3: 764 sq. ft
 EXCLUDED AREAS: ELECTRICAL ROOM: 192 sq. ft, BASEMENT: 473 sq. ft

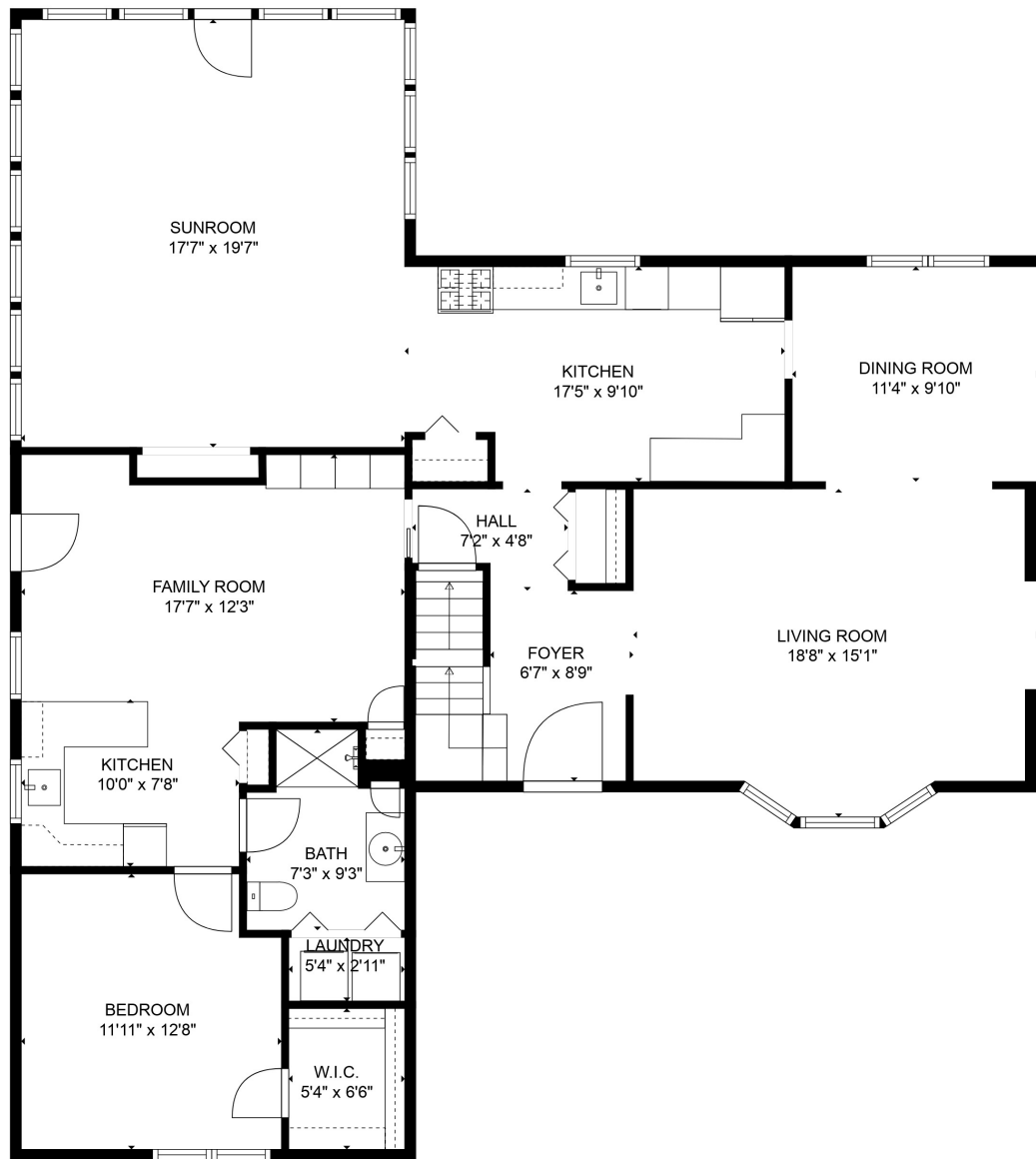
SIZES AND DIMENSIONS ARE APPROXIMATE, ACTUAL MAY VARY.





TOTAL: 2382 sq. ft
 Below Ground: 10 sq. ft, FLOOR 2: 1608 sq. ft, FLOOR 3: 764 sq. ft
 EXCLUDED AREAS: ELECTRICAL ROOM: 192 sq. ft, BASEMENT: 473 sq. ft

SIZES AND DIMENSIONS ARE APPROXIMATE, ACTUAL MAY VARY.

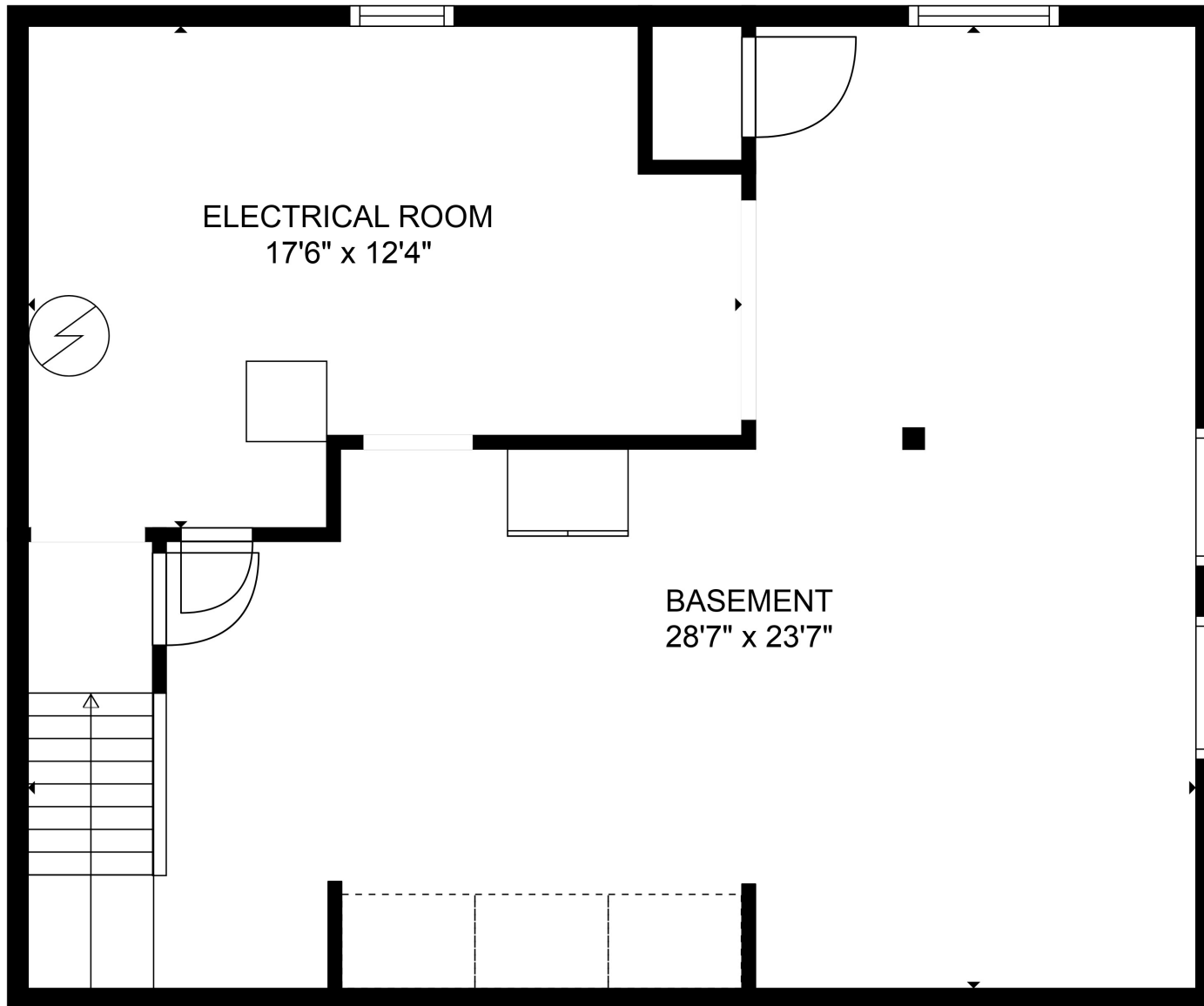


TOTAL: 2382 sq. ft

Below Ground: 10 sq. ft, FLOOR 2: 1608 sq. ft, FLOOR 3: 764 sq. ft
 EXCLUDED AREAS: ELECTRICAL ROOM: 192 sq. ft, BASEMENT: 473 sq. ft

SIZES AND DIMENSIONS ARE APPROXIMATE, ACTUAL MAY VARY.





ELECTRICAL ROOM
17'6" x 12'4"

BASEMENT
28'7" x 23'7"



TOTAL: 2382 sq. ft
Below Ground: 10 sq. ft, FLOOR 2: 1608 sq. ft, FLOOR 3: 764 sq. ft
EXCLUDED AREAS: ELECTRICAL ROOM: 192 sq. ft, BASEMENT: 473 sq. ft

SIZES AND DIMENSIONS ARE APPROXIMATE, ACTUAL MAY VARY.