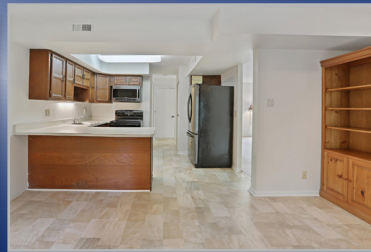




# 113 Hilltop Court

Langhorne, PA 19047

3 Bed 2.5 Bath 1,892 Sq Ft .12 Acres



## Welcome home to 113 Hilltop Ct, situated on a cul-de-sac in the Summit Trace neighborhood.

This townhome is an end unit and offers over 1800 sq ft of living space, a garage with interior access, and a private patio overlooking a wooded area. You will be surprised by the open living room, which features a wood-burning fireplace and dining room overlooking a private backyard. The eat-in kitchen features a slider leading out to the patio. The main level also has a combo half bath-laundry room. The open staircase leads to the upper level, featuring 3 Bedrooms and 2 full baths. The primary bedroom features a large closet and full bathroom. Enjoy all the benefits of community living without an HOA or HOA fees. Summit Trace is close to Core Creek and Tyler Walk parks, which offer many options for walking, biking trails, play areas for the children, and so much more. The community is within easy walking distance of the Summit Square Shopping Center and a short distance to Historic Newtown Borough. The Newtown Bypass lends access to I95, 295, Route 1, and the Turnpike, making this location great for commuters to Philadelphia, Princeton, and New York.



Offered by:

## Carol Richardson

Office: (267) 350-5555x2574

Cell: (267) 566-5676

Email: [c.richardson@cbhearthsides.com](mailto:c.richardson@cbhearthsides.com)

Web: [www.carol-richardson.com](http://www.carol-richardson.com)



**COLDWELL BANKER**  
**HEARTHSIDE**

100 Brandywine Blvd  
Newtown, PA 18940



