



Home report


2239 Carter St,Baker City,OR,US




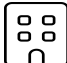
Property summary


**0**
Garages


**5**
Bedrooms

**2**
Bathrooms

**0**
Half baths

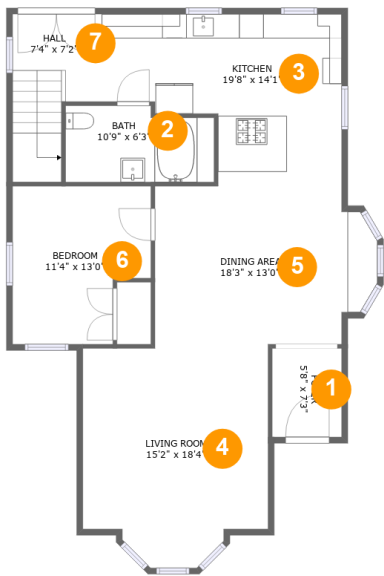
**2**
Floors

**2,061**
Gross living area sqft

**2,153**
Total sqft

Home report

2239 Carter St,Baker City,OR,US



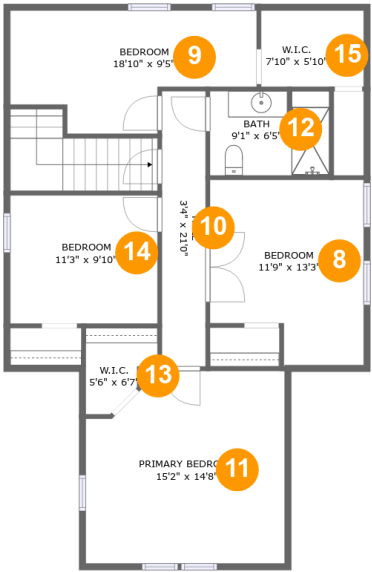
Room dimensions

Floor 1 Total sqft: 1123 Living area: 1123

#		Dimensions	sqft	Counted as living area
1	Foyer	5'8" x 7'3"	42 sq. ft	Yes
2	Bath	10'9" x 6'3"	71 sq. ft	Yes
3	Kitchen	19'8" x 14'1"	217 sq. ft	Yes
4	Living Room	15'2" x 18'4"	250 sq. ft	Yes
5	Dining Area	18'3" x 13'0"	219 sq. ft	Yes
6	Bedroom	11'4" x 13'0"	130 sq. ft	Yes
7	Hall	7'4" x 7'2"	79 sq. ft	Yes

Home report

2239 Carter St,Baker City,OR,US

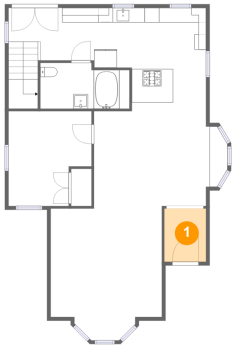


Room dimensions

Floor 2 Total sqft: 1030 Living area: 938

#		Dimensions	sqft	Counted as living area
8	Bedroom	11'9" x 13'3"	139 sq. ft	Yes
9	Bedroom	18'10" x 9'5"	120 sq. ft	Yes
10	Hall	3'4" x 21'0"	70 sq. ft	Yes
11	Primary Bedroom	15'2" x 14'8"	211 sq. ft	Yes
12	Bath	9'1" x 6'5"	58 sq. ft	Yes
13	W.I.C.	5'6" x 6'7"	28 sq. ft	Yes
14	Bedroom	11'3" x 9'10"	104 sq. ft	Yes
15	W.I.C.	7'10" x 5'10"	29 sq. ft	Yes

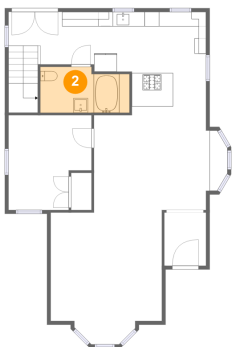
1 Floor 1 - Foyer



Dimensions: 5'8" x 7'3"
Area: 42 sq. ft
Counted as living area: Yes

Heated: Yes
Finished: Yes
Enclosed: Yes
Contiguous: Yes
Permitted: Yes
Wet space: No
Addition: No
Conversion: No

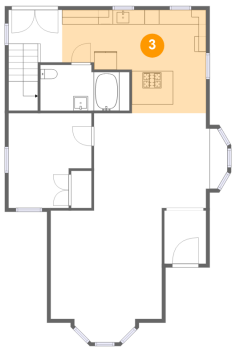
2 Floor 1 - Bath



Dimensions: 10'9" x 6'3"
Area: 71 sq. ft
Counted as living area: Yes

Heated: Yes
Finished: Yes
Enclosed: Yes
Contiguous: Yes
Permitted: Yes
Wet space: Yes
Addition: No
Conversion: No

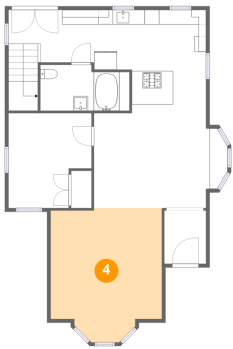
3 Floor 1 - Kitchen



Dimensions: 19'8" x 14'1"
Area: 217 sq. ft
Counted as living area: Yes

Heated: Yes
Finished: Yes
Enclosed: Yes
Contiguous: Yes
Permitted: Yes
Wet space: No
Addition: No
Conversion: No

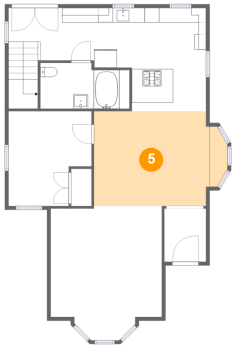
4 Floor 1 - Living Room



Dimensions: 15'2" x 18'4"
Area: 250 sq. ft
Counted as living area: Yes

Heated: Yes
Finished: Yes
Enclosed: Yes
Contiguous: Yes
Permitted: Yes
Wet space: No
Addition: No
Conversion: No

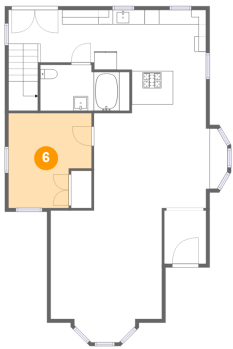
5 Floor 1 - Dining Area



Dimensions: 18'3" x 13'0"
Area: 219 sq. ft
Counted as living area: Yes

Heated: Yes
Finished: Yes
Enclosed: Yes
Contiguous: Yes
Permitted: Yes
Wet space: No
Addition: No
Conversion: No

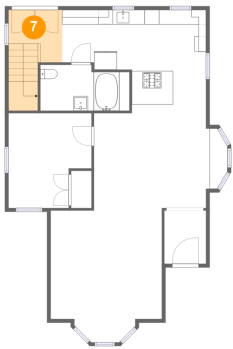
6 Floor 1 - Bedroom



Dimensions: 11'4" x 13'0"
Area: 130 sq. ft
Counted as living area: Yes

Heated: Yes
Finished: Yes
Enclosed: Yes
Contiguous: Yes
Permitted: Yes
Wet space: No
Addition: No
Conversion: No

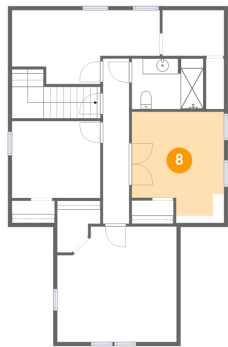
7 Floor 1 - Hall



Dimensions: 7'4" x 7'2"
Area: 79 sq. ft
Counted as living area: Yes

Heated: Yes
Finished: Yes
Enclosed: Yes
Contiguous: Yes
Permitted: Yes
Wet space: No
Addition: No
Conversion: No

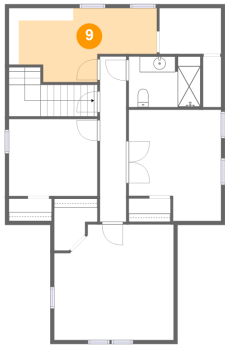
8 Floor 2 - Bedroom



Dimensions: 11'9" x 13'3"
Area: 139 sq. ft
Counted as living area: Yes

Heated: Yes
Finished: Yes
Enclosed: Yes
Contiguous: Yes
Permitted: Yes
Wet space: No
Addition: No
Conversion: No

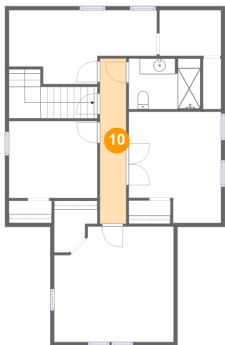
9 Floor 2 - Bedroom



Dimensions: 18'10" x 9'5"
Area: 120 sq. ft
Counted as living area: Yes

Heated: Yes
Finished: Yes
Enclosed: Yes
Contiguous: Yes
Permitted: Yes
Wet space: No
Addition: No
Conversion: No

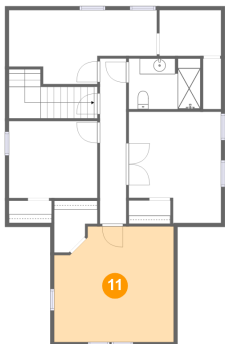
10 Floor 2 - Hall



Dimensions: 3'4" x 21'0"
Area: 70 sq. ft
Counted as living area: Yes

Heated: Yes
Finished: Yes
Enclosed: Yes
Contiguous: Yes
Permitted: Yes
Wet space: No
Addition: No
Conversion: No

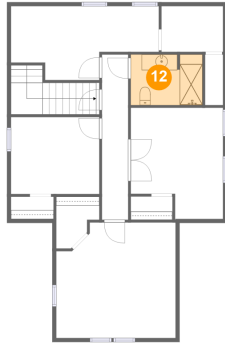
11 Floor 2 - Primary Bedroom



Dimensions: 15'2" x 14'8"
Area: 211 sq. ft
Counted as living area: Yes

Heated: Yes
Finished: Yes
Enclosed: Yes
Contiguous: Yes
Permitted: Yes
Wet space: No
Addition: No
Conversion: No

12 Floor 2 - Bath



Dimensions: 9'1" x 6'5"
Area: 58 sq. ft
Counted as living area: Yes

Heated: Yes
Finished: Yes
Enclosed: Yes
Contiguous: Yes
Permitted: Yes
Wet space: Yes
Addition: No
Conversion: No

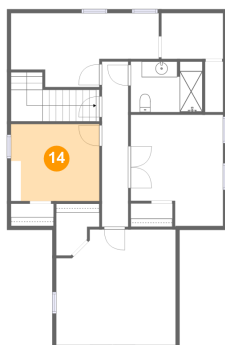
13 Floor 2 - W.I.C.



Dimensions: 5'6" x 6'7"
Area: 28 sq. ft
Counted as living area: Yes

Heated: Yes
Finished: Yes
Enclosed: Yes
Contiguous: Yes
Permitted: Yes
Wet space: No
Addition: No
Conversion: No

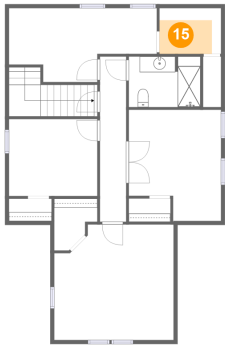
14 Floor 2 - Bedroom



Dimensions: 11'3" x 9'10"
Area: 104 sq. ft
Counted as living area: Yes

Heated: Yes
Finished: Yes
Enclosed: Yes
Contiguous: Yes
Permitted: Yes
Wet space: No
Addition: No
Conversion: No

15 Floor 2 - W.I.C.



Dimensions: 7'10" x 5'10"
Area: 29 sq. ft
Counted as living area: Yes

Heated: Yes
Finished: Yes
Enclosed: Yes
Contiguous: Yes
Permitted: Yes
Wet space: No
Addition: No
Conversion: No