

812 Point Seaside Drive, Crystal Beach, Pinellas County, Florida, United States, 34681



Property summary


 **3** Garages

 **6** Bedrooms

 **6** Bathrooms

 **1** Half baths

 **3** Floors

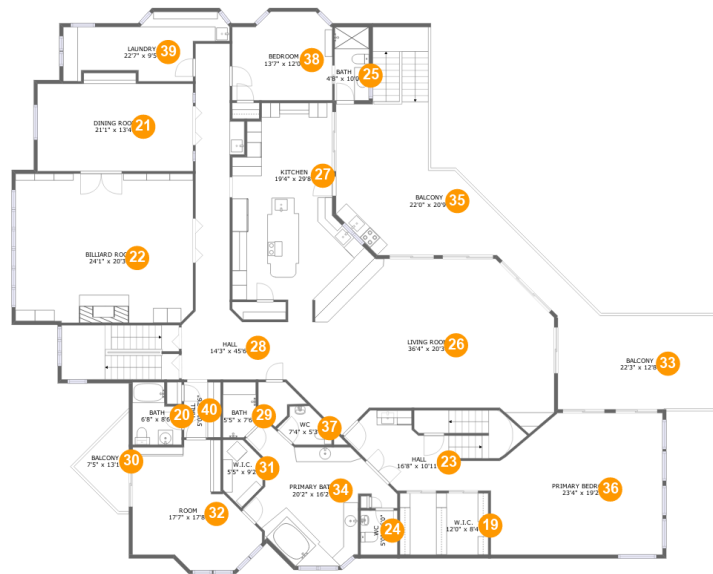
 **6,826** Gross living area sqft

 **14,273** Total sqft

**812 Point Seaside Drive, Crystal Beach, Pinellas
County, Florida, United States, 34681**

#		Dimensions	sqft	Counted as living area
12	Bath	10'9" x 4'3"	45 sq. ft	No
13	Hall	3'4" x 4'3"	14 sq. ft	No
14	Hall	11'8" x 11'11"	103 sq. ft	No
15	Room	32'0" x 20'3"	461 sq. ft	No
16	Patio	20'5" x 28'8"	1076 sq. ft	No
17	Sitting Room	16'9" x 30'2"	476 sq. ft	No
18	Hot Tub	6'9" x 7'1"	42 sq. ft	No

812 Point Seaside Drive, Crystal Beach, Pinellas County, Florida, United States, 34681



Room dimensions

Floor 2

Total sqft: 5125 Living area: 4316

#		Dimensions	sqft	Counted as living area
19	W.I.C.	12'0" x 8'4"	100 sq. ft	Yes
20	Bath	6'8" x 8'6"	49 sq. ft	Yes
21	Dining Room	21'1" x 13'4"	260 sq. ft	Yes
22	Billiard Room	24'1" x 20'3"	484 sq. ft	Yes
23	Hall	16'8" x 10'11"	198 sq. ft	Yes
24	WC	5'0" x 6'0"	30 sq. ft	Yes
25	Bath	4'8" x 10'0"	47 sq. ft	Yes
26	Living Room	36'4" x 20'3"	657 sq. ft	Yes
27	Kitchen	19'4" x 29'8"	389 sq. ft	Yes
28	Hall	14'3" x 45'6"	298 sq. ft	Yes
29	Bath	5'5" x 7'6"	33 sq. ft	Yes

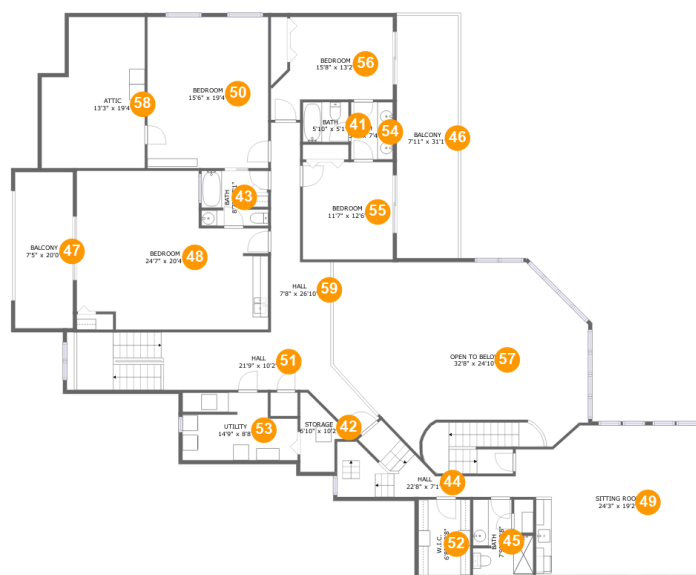
Scan captured on Wed, 05 Mar 2025 01:35:49 GMT

Information is calculated by Cubicasa technology deemed highly reliable but not guaranteed.

**812 Point Seaside Drive, Crystal Beach, Pinellas
County, Florida, United States, 34681**

#		Dimensions	sqft	Counted as living area
30	Balcony	7'5" x 13'1"	55 sq. ft	No
31	W.I.C.	5'5" x 9'2"	38 sq. ft	Yes
32	Room	17'7" x 17'8"	228 sq. ft	Yes
33	Balcony	22'3" x 12'8"	281 sq. ft	No
34	Primary Bath	20'2" x 16'2"	237 sq. ft	Yes
35	Balcony	22'0" x 20'9"	474 sq. ft	No
36	Primary Bedroom	23'4" x 19'2"	413 sq. ft	Yes
37	WC	7'4" x 5'3"	28 sq. ft	Yes
38	Bedroom	13'7" x 12'0"	152 sq. ft	Yes
39	Laundry	22'7" x 9'5"	149 sq. ft	Yes
40	Hall	5'0" x 7'6"	37 sq. ft	Yes

812 Point Seaside Drive, Crystal Beach, Pinellas County, Florida, United States, 34681



Room dimensions

Floor 3

Total sqft: 4063 Living area: 2510

#		Dimensions	sqft	Counted as living area
41	Bath	5'10" x 5'1"	30 sq. ft	Yes
42	Storage	6'10" x 10'2"	42 sq. ft	No
43	Bath	8'7" x 7'1"	52 sq. ft	Yes
44	Hall	22'8" x 7'1"	113 sq. ft	Yes
45	Bath	7'9" x 9'8"	61 sq. ft	Yes
46	Balcony	7'11" x 31'1"	245 sq. ft	No
47	Balcony	7'5" x 20'0"	148 sq. ft	No
48	Bedroom	24'7" x 20'4"	421 sq. ft	Yes
49	Sitting Room	24'3" x 19'2"	415 sq. ft	Yes
50	Bedroom	15'6" x 19'4"	300 sq. ft	Yes
51	Hall	21'9" x 10'2"	286 sq. ft	Yes

**812 Point Seaside Drive, Crystal Beach, Pinellas
County, Florida, United States, 34681**

#		Dimensions	sqft	Counted as living area
52	W.I.C.	6'8" x 9'8"	64 sq. ft	Yes
53	Utility	14'9" x 8'8"	113 sq. ft	No
54	Bath	5'4" x 7'4"	39 sq. ft	Yes
55	Bedroom	11'7" x 12'6"	144 sq. ft	Yes
56	Bedroom	15'8" x 13'2"	156 sq. ft	Yes
57	Open To Below	32'8" x 24'10"	713 sq. ft	No
58	Attic	13'3" x 19'4"	128 sq. ft	No
59	Hall	7'8" x 26'10"	139 sq. ft	Yes

812 Point Seaside Drive, Crystal Beach, Pinellas County, Florida, United States, 34681

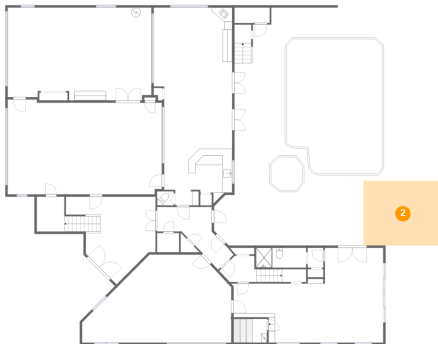
1 Floor 1 - Hall



Dimensions: 7'11" x 5'7"
Area: 64 sq. ft
Counted as living area: No

Heated: Yes
Finished: No
Enclosed: Yes
Contiguous: Yes
Permitted: Yes
Wet space: No
Addition: No
Conversion: No

2 Floor 1 - Deck

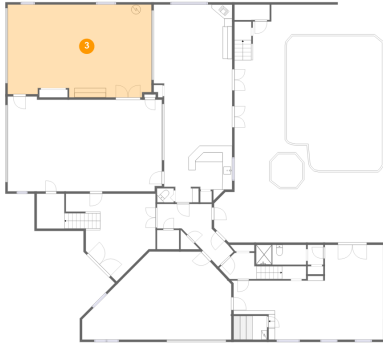


Dimensions: 16'11" x 13'9"
Area: 233 sq. ft
Counted as living area: No

Heated: No
Finished: Yes
Enclosed: No
Contiguous: Yes
Permitted: Yes
Wet space: No
Addition: No
Conversion: No

812 Point Seaside Drive, Crystal Beach, Pinellas County, Florida, United States, 34681

3 Floor 1 - Garage



Dimensions: 30'9" x 19'10"
Area: 588 sq. ft
Counted as living area: No

Heated: No
Finished: No
Enclosed: Yes
Contiguous: Yes
Permitted: Yes
Wet space: No
Addition: No
Conversion: No

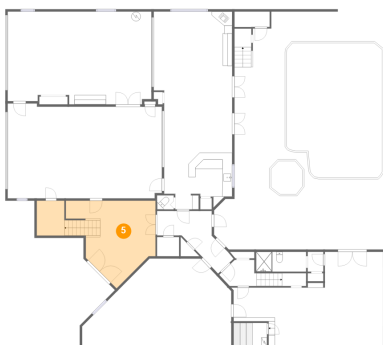
4 Floor 1 - Sauna



Dimensions: 7'2" x 5'1"
Area: 36 sq. ft
Counted as living area: No

Heated: Yes
Finished: No
Enclosed: Yes
Contiguous: Yes
Permitted: Yes
Wet space: No
Addition: No
Conversion: No

5 Floor 1 - Foyer

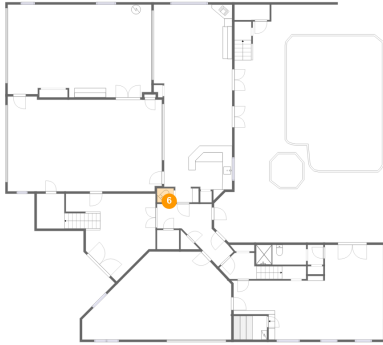


Dimensions: 25'4" x 18'8"
Area: 299 sq. ft
Counted as living area: No

Heated: Yes
Finished: No
Enclosed: Yes
Contiguous: Yes
Permitted: Yes
Wet space: No
Addition: No
Conversion: No

812 Point Seaside Drive, Crystal Beach, Pinellas County, Florida, United States, 34681

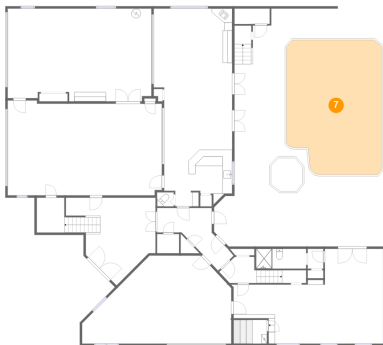
6 Floor 1 - WC



Dimensions: 3'7" x 3'0"
Area: 11 sq. ft
Counted as living area: Yes

Heated: Yes
Finished: No
Enclosed: Yes
Contiguous: Yes
Permitted: Yes
Wet space: No
Addition: No
Conversion: No

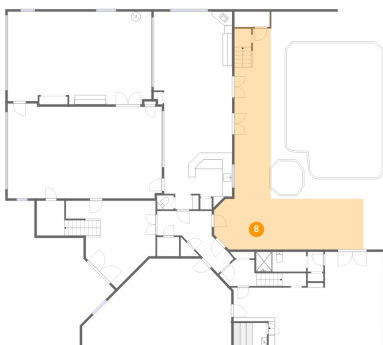
7 Floor 1 - Swimming Pool



Dimensions: 20'5" x 27'0"
Area: 554 sq. ft
Counted as living area: No

Heated: No
Finished: No
Enclosed: No
Contiguous: Yes
Permitted: No
Wet space: No
Addition: No
Conversion: No

8 Floor 1 - Porch



Dimensions: 31'11" x 47'6"
Area: 624 sq. ft
Counted as living area: No

Heated: No
Finished: Yes
Enclosed: No
Contiguous: Yes
Permitted: Yes
Wet space: No
Addition: No
Conversion: No

812 Point Seaside Drive, Crystal Beach, Pinellas County, Florida, United States, 34681

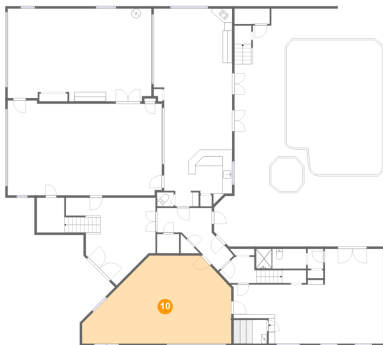
9 Floor 1 - Wet Bar



Dimensions: 14'6" x 12'1"
Area: 150 sq. ft
Counted as living area: No

Heated: Yes
Finished: No
Enclosed: Yes
Contiguous: Yes
Permitted: Yes
Wet space: No
Addition: No
Conversion: No

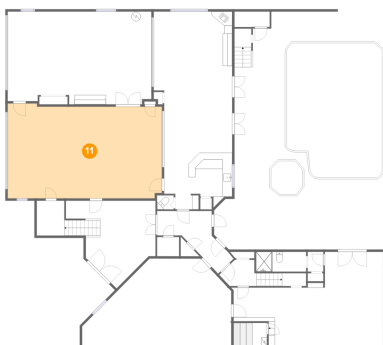
10 Floor 1 - Garage



Dimensions: 31'10" x 18'9"
Area: 472 sq. ft
Counted as living area: No

Heated: No
Finished: No
Enclosed: Yes
Contiguous: Yes
Permitted: Yes
Wet space: No
Addition: No
Conversion: No

11 Floor 1 - Garage



Dimensions: 32'11" x 20'3"
Area: 647 sq. ft
Counted as living area: No

Heated: No
Finished: No
Enclosed: Yes
Contiguous: Yes
Permitted: Yes
Wet space: No
Addition: No
Conversion: No

812 Point Seaside Drive, Crystal Beach, Pinellas County, Florida, United States, 34681

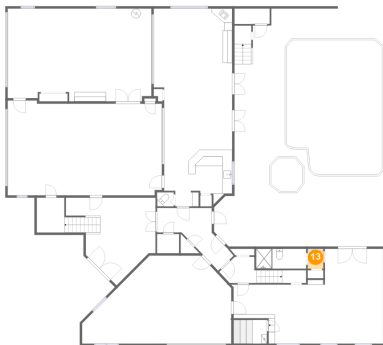
12 Floor 1 - Bath



Dimensions: 10'9" x 4'3"
Area: 45 sq. ft
Counted as living area: No

Heated: Yes
Finished: No
Enclosed: Yes
Contiguous: Yes
Permitted: Yes
Wet space: Yes
Addition: No
Conversion: No

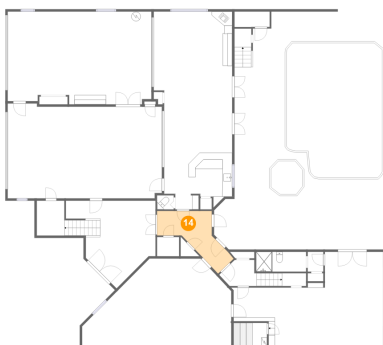
13 Floor 1 - Hall



Dimensions: 3'4" x 4'3"
Area: 14 sq. ft
Counted as living area: No

Heated: Yes
Finished: No
Enclosed: Yes
Contiguous: Yes
Permitted: Yes
Wet space: No
Addition: No
Conversion: No

14 Floor 1 - Hall



Dimensions: 11'8" x 11'11"
Area: 103 sq. ft
Counted as living area: No

Heated: Yes
Finished: No
Enclosed: Yes
Contiguous: Yes
Permitted: Yes
Wet space: No
Addition: No
Conversion: No

812 Point Seaside Drive, Crystal Beach, Pinellas County, Florida, United States, 34681

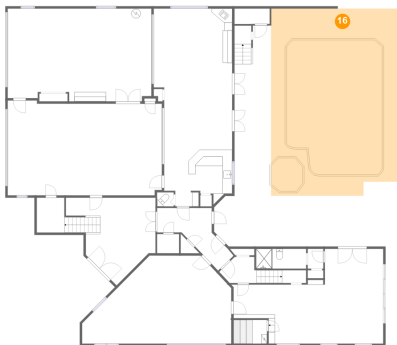
15 Floor 1 - Room



Dimensions: 32'0" x 20'3"
Area: 461 sq. ft
Counted as living area: No

Heated: Yes
Finished: No
Enclosed: Yes
Contiguous: Yes
Permitted: Yes
Wet space: No
Addition: No
Conversion: No

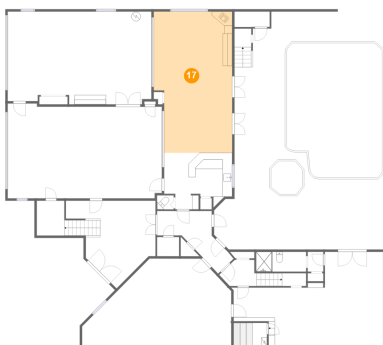
16 Floor 1 - Patio



Dimensions: 20'5" x 28'8"
Area: 1076 sq. ft
Counted as living area: No

Heated: No
Finished: Yes
Enclosed: No
Contiguous: Yes
Permitted: Yes
Wet space: No
Addition: No
Conversion: No

17 Floor 1 - Sitting Room



Dimensions: 16'9" x 30'2"
Area: 476 sq. ft
Counted as living area: No

Heated: Yes
Finished: No
Enclosed: Yes
Contiguous: Yes
Permitted: Yes
Wet space: No
Addition: No
Conversion: No

812 Point Seaside Drive, Crystal Beach, Pinellas County, Florida, United States, 34681

18 Floor 1 - Hot Tub



Dimensions: 6'9" x 7'1"
Area: 42 sq. ft
Counted as living area: No

Heated: No
Finished: No
Enclosed: No
Contiguous: Yes
Permitted: No
Wet space: No
Addition: No
Conversion: No

19 Floor 2 - W.I.C.



Dimensions: 12'0" x 8'4"
Area: 100 sq. ft
Counted as living area: Yes

Heated: Yes
Finished: Yes
Enclosed: Yes
Contiguous: Yes
Permitted: Yes
Wet space: No
Addition: No
Conversion: No

20 Floor 2 - Bath



Dimensions: 6'8" x 8'6"
Area: 49 sq. ft
Counted as living area: Yes

Heated: Yes
Finished: Yes
Enclosed: Yes
Contiguous: Yes
Permitted: Yes
Wet space: Yes
Addition: No
Conversion: No

812 Point Seaside Drive, Crystal Beach, Pinellas County, Florida, United States, 34681

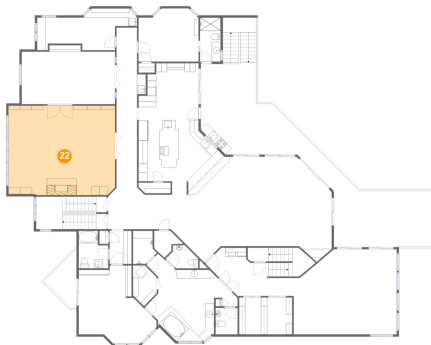
21 Floor 2 - Dining Room



Dimensions: 21'1" x 13'4"
Area: 260 sq. ft
Counted as living area: Yes

Heated: Yes
Finished: Yes
Enclosed: Yes
Contiguous: Yes
Permitted: Yes
Wet space: No
Addition: No
Conversion: No

22 Floor 2 - Billiard Room



Dimensions: 24'1" x 20'3"
Area: 484 sq. ft
Counted as living area: Yes

Heated: Yes
Finished: Yes
Enclosed: Yes
Contiguous: Yes
Permitted: Yes
Wet space: No
Addition: No
Conversion: No

23 Floor 2 - Hall



Dimensions: 16'8" x 10'11"
Area: 198 sq. ft
Counted as living area: Yes

Heated: Yes
Finished: Yes
Enclosed: Yes
Contiguous: Yes
Permitted: Yes
Wet space: No
Addition: No
Conversion: No

812 Point Seaside Drive, Crystal Beach, Pinellas County, Florida, United States, 34681

24 Floor 2 - WC



Dimensions: 5'0" x 6'0"
Area: 30 sq. ft
Counted as living area: Yes

Heated: Yes
Finished: Yes
Enclosed: Yes
Contiguous: Yes
Permitted: Yes
Wet space: Yes
Addition: No
Conversion: No

25 Floor 2 - Bath



Dimensions: 4'8" x 10'0"
Area: 47 sq. ft
Counted as living area: Yes

Heated: Yes
Finished: Yes
Enclosed: Yes
Contiguous: Yes
Permitted: Yes
Wet space: Yes
Addition: No
Conversion: No

26 Floor 2 - Living Room



Dimensions: 36'4" x 20'3"
Area: 657 sq. ft
Counted as living area: Yes

Heated: Yes
Finished: Yes
Enclosed: Yes
Contiguous: Yes
Permitted: Yes
Wet space: No
Addition: No
Conversion: No

812 Point Seaside Drive, Crystal Beach, Pinellas County, Florida, United States, 34681

27 Floor 2 - Kitchen



Dimensions: 19'4" x 29'8"
Area: 389 sq. ft
Counted as living area: Yes

Heated: Yes
Finished: Yes
Enclosed: Yes
Contiguous: Yes
Permitted: Yes
Wet space: No
Addition: No
Conversion: No

28 Floor 2 - Hall



Dimensions: 14'3" x 45'6"
Area: 298 sq. ft
Counted as living area: Yes

Heated: Yes
Finished: Yes
Enclosed: Yes
Contiguous: Yes
Permitted: Yes
Wet space: No
Addition: No
Conversion: No

29 Floor 2 - Bath



Dimensions: 5'5" x 7'6"
Area: 33 sq. ft
Counted as living area: Yes

Heated: Yes
Finished: Yes
Enclosed: Yes
Contiguous: Yes
Permitted: Yes
Wet space: Yes
Addition: No
Conversion: No

812 Point Seaside Drive, Crystal Beach, Pinellas County, Florida, United States, 34681

30 Floor 2 - Balcony



Dimensions: 7'5" x 13'1"
Area: 55 sq. ft
Counted as living area: No

Heated: No
Finished: Yes
Enclosed: No
Contiguous: Yes
Permitted: Yes
Wet space: No
Addition: No
Conversion: No

31 Floor 2 - W.I.C.



Dimensions: 5'5" x 9'2"
Area: 38 sq. ft
Counted as living area: Yes

Heated: Yes
Finished: Yes
Enclosed: Yes
Contiguous: Yes
Permitted: Yes
Wet space: No
Addition: No
Conversion: No

32 Floor 2 - Room



Dimensions: 17'7" x 17'8"
Area: 228 sq. ft
Counted as living area: Yes

Heated: Yes
Finished: Yes
Enclosed: Yes
Contiguous: Yes
Permitted: Yes
Wet space: No
Addition: No
Conversion: No

812 Point Seaside Drive, Crystal Beach, Pinellas County, Florida, United States, 34681

33 Floor 2 - Balcony



Dimensions: 22'3" x 12'8"
Area: 281 sq. ft
Counted as living area: No

Heated: No
Finished: Yes
Enclosed: No
Contiguous: Yes
Permitted: Yes
Wet space: No
Addition: No
Conversion: No

34 Floor 2 - Primary Bath



Dimensions: 20'2" x 16'2"
Area: 237 sq. ft
Counted as living area: Yes

Heated: Yes
Finished: Yes
Enclosed: Yes
Contiguous: Yes
Permitted: Yes
Wet space: Yes
Addition: No
Conversion: No

35 Floor 2 - Balcony



Dimensions: 22'0" x 20'9"
Area: 474 sq. ft
Counted as living area: No

Heated: No
Finished: Yes
Enclosed: No
Contiguous: Yes
Permitted: Yes
Wet space: No
Addition: No
Conversion: No

812 Point Seaside Drive, Crystal Beach, Pinellas County, Florida, United States, 34681

36 Floor 2 - Primary Bedroom



Dimensions: 23'4" x 19'2"
Area: 413 sq. ft
Counted as living area: Yes

Heated: Yes
Finished: Yes
Enclosed: Yes
Contiguous: Yes
Permitted: Yes
Wet space: No
Addition: No
Conversion: No

37 Floor 2 - WC



Dimensions: 7'4" x 5'3"
Area: 28 sq. ft
Counted as living area: Yes

Heated: Yes
Finished: Yes
Enclosed: Yes
Contiguous: Yes
Permitted: Yes
Wet space: No
Addition: No
Conversion: No

38 Floor 2 - Bedroom



Dimensions: 13'7" x 12'0"
Area: 152 sq. ft
Counted as living area: Yes

Heated: Yes
Finished: Yes
Enclosed: Yes
Contiguous: Yes
Permitted: Yes
Wet space: No
Addition: No
Conversion: No

812 Point Seaside Drive, Crystal Beach, Pinellas County, Florida, United States, 34681

39 Floor 2 - Laundry



Dimensions: 22'7" x 9'5"
Area: 149 sq. ft
Counted as living area: Yes

Heated: Yes
Finished: Yes
Enclosed: Yes
Contiguous: Yes
Permitted: Yes
Wet space: No
Addition: No
Conversion: No

40 Floor 2 - Hall



Dimensions: 5'0" x 7'6"
Area: 37 sq. ft
Counted as living area: Yes

Heated: Yes
Finished: Yes
Enclosed: Yes
Contiguous: Yes
Permitted: Yes
Wet space: No
Addition: No
Conversion: No

41 Floor 3 - Bath



Dimensions: 5'10" x 5'1"
Area: 30 sq. ft
Counted as living area: Yes

Heated: Yes
Finished: Yes
Enclosed: Yes
Contiguous: Yes
Permitted: Yes
Wet space: Yes
Addition: No
Conversion: No

812 Point Seaside Drive, Crystal Beach, Pinellas County, Florida, United States, 34681

42 Floor 3 - Storage



Dimensions: 6'10" x 10'2"
Area: 42 sq. ft
Counted as living area: No

Heated: No
Finished: No
Enclosed: No
Contiguous: Yes
Permitted: Yes
Wet space: No
Addition: No
Conversion: No

43 Floor 3 - Bath



Dimensions: 8'7" x 7'1"
Area: 52 sq. ft
Counted as living area: Yes

Heated: Yes
Finished: Yes
Enclosed: Yes
Contiguous: Yes
Permitted: Yes
Wet space: Yes
Addition: No
Conversion: No

44 Floor 3 - Hall



Dimensions: 22'8" x 7'1"
Area: 113 sq. ft
Counted as living area: Yes

Heated: Yes
Finished: Yes
Enclosed: Yes
Contiguous: Yes
Permitted: Yes
Wet space: No
Addition: No
Conversion: No

812 Point Seaside Drive, Crystal Beach, Pinellas County, Florida, United States, 34681

45 Floor 3 - Bath



Dimensions: 7'9" x 9'8"
Area: 61 sq. ft
Counted as living area: Yes

Heated: Yes
Finished: Yes
Enclosed: Yes
Contiguous: Yes
Permitted: Yes
Wet space: Yes
Addition: No
Conversion: No

46 Floor 3 - Balcony



Dimensions: 7'11" x 31'1"
Area: 245 sq. ft
Counted as living area: No

Heated: No
Finished: Yes
Enclosed: No
Contiguous: Yes
Permitted: Yes
Wet space: No
Addition: No
Conversion: No

47 Floor 3 - Balcony

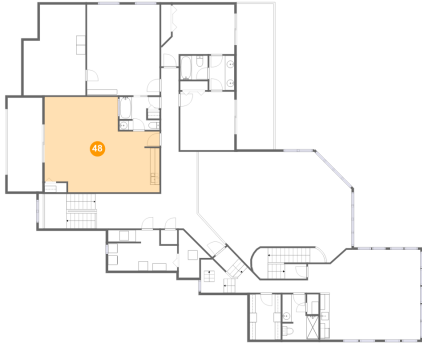


Dimensions: 7'5" x 20'0"
Area: 148 sq. ft
Counted as living area: No

Heated: No
Finished: Yes
Enclosed: No
Contiguous: Yes
Permitted: Yes
Wet space: No
Addition: No
Conversion: No

812 Point Seaside Drive, Crystal Beach, Pinellas County, Florida, United States, 34681

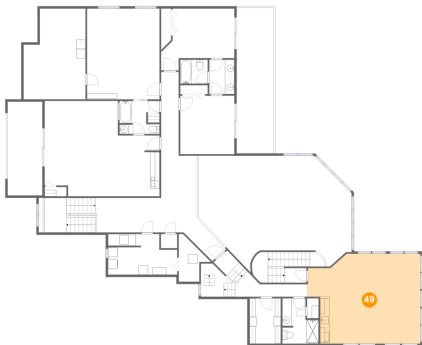
48 Floor 3 - Bedroom



Dimensions: 24'7" x 20'4"
Area: 421 sq. ft
Counted as living area: Yes

Heated: Yes
Finished: Yes
Enclosed: Yes
Contiguous: Yes
Permitted: Yes
Wet space: No
Addition: No
Conversion: No

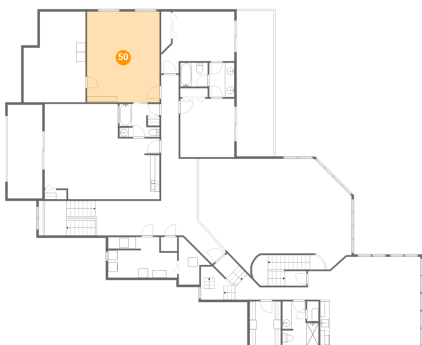
49 Floor 3 - Sitting Room



Dimensions: 24'3" x 19'2"
Area: 415 sq. ft
Counted as living area: Yes

Heated: Yes
Finished: Yes
Enclosed: Yes
Contiguous: Yes
Permitted: Yes
Wet space: No
Addition: No
Conversion: No

50 Floor 3 - Bedroom



Dimensions: 15'6" x 19'4"
Area: 300 sq. ft
Counted as living area: Yes

Heated: Yes
Finished: Yes
Enclosed: Yes
Contiguous: Yes
Permitted: Yes
Wet space: No
Addition: No
Conversion: No

812 Point Seaside Drive, Crystal Beach, Pinellas County, Florida, United States, 34681

51 Floor 3 - Hall



Dimensions: 21'9" x 10'2"
Area: 286 sq. ft
Counted as living area: Yes

Heated: Yes
Finished: Yes
Enclosed: Yes
Contiguous: Yes
Permitted: Yes
Wet space: No
Addition: No
Conversion: No

52 Floor 3 - W.I.C.



Dimensions: 6'8" x 9'8"
Area: 64 sq. ft
Counted as living area: Yes

Heated: Yes
Finished: Yes
Enclosed: Yes
Contiguous: Yes
Permitted: Yes
Wet space: No
Addition: No
Conversion: No

53 Floor 3 - Utility



Dimensions: 14'9" x 8'8"
Area: 113 sq. ft
Counted as living area: No

Heated: Yes
Finished: No
Enclosed: Yes
Contiguous: Yes
Permitted: Yes
Wet space: No
Addition: No
Conversion: No

812 Point Seaside Drive, Crystal Beach, Pinellas County, Florida, United States, 34681

54 Floor 3 - Bath



Dimensions: 5'4" x 7'4"
Area: 39 sq. ft
Counted as living area: Yes

Heated: Yes
Finished: Yes
Enclosed: Yes
Contiguous: Yes
Permitted: Yes
Wet space: Yes
Addition: No
Conversion: No

55 Floor 3 - Bedroom



Dimensions: 11'7" x 12'6"
Area: 144 sq. ft
Counted as living area: Yes

Heated: Yes
Finished: Yes
Enclosed: Yes
Contiguous: Yes
Permitted: Yes
Wet space: No
Addition: No
Conversion: No

56 Floor 3 - Bedroom



Dimensions: 15'8" x 13'2"
Area: 156 sq. ft
Counted as living area: Yes

Heated: Yes
Finished: Yes
Enclosed: Yes
Contiguous: Yes
Permitted: Yes
Wet space: No
Addition: No
Conversion: No

812 Point Seaside Drive, Crystal Beach, Pinellas County, Florida, United States, 34681

57 Floor 3 - Open To Below



Dimensions: 32'8" x 24'10"
Area: 713 sq. ft
Counted as living area: No

Heated: No
Finished: No
Enclosed: No
Contiguous: Yes
Permitted: No
Wet space: No
Addition: No
Conversion: No

58 Floor 3 - Attic



Dimensions: 13'3" x 19'4"
Area: 128 sq. ft
Counted as living area: No

Heated: No
Finished: No
Enclosed: Yes
Contiguous: Yes
Permitted: Yes
Wet space: No
Addition: No
Conversion: No

59 Floor 3 - Hall



Dimensions: 7'8" x 26'10"
Area: 139 sq. ft
Counted as living area: Yes

Heated: Yes
Finished: Yes
Enclosed: Yes
Contiguous: Yes
Permitted: Yes
Wet space: No
Addition: No
Conversion: No