

Home report


88 Stripers Lane, North Shore, Moneta, Franklin County, Virginia,
United States, 24121



Total Area: 1570 sq. ft
Floor 1: 126 sq. ft, Floor 2: 1444 sq. ft
Excluded: Garage 558 sq. ft, Bedroom 112 sq. ft, Utility 254 sq. ft, Family room 229 sq. ft, Storage 75 sq. ft, Fireplace 13 sq. ft, Porch 83 sq. ft, Walls: 194 sq. ft

Property summary

**2**
Floors

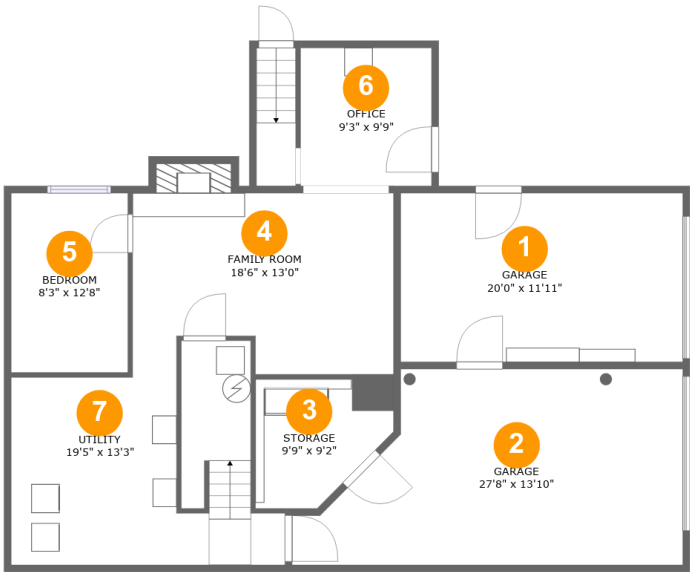
**4**
Bedrooms

**2**
Bathrooms

**2**
Garages

Home report

88 Stripers Lane, North Shore, Moneta, Franklin County, Virginia,
United States, 24121



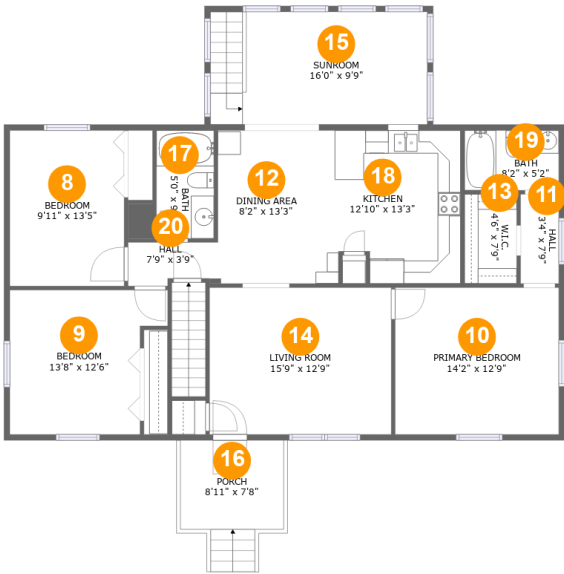
Room dimensions

Floor 1 Total:126sqft Excluded: 1241sqft

#		Max Dimensions	sqft	Included
1	Garage	20'0" x 11'11"	238 sq. ft	No
2	Garage	27'8" x 13'10"	320 sq. ft	No
3	Storage	9'9" x 9'2"	75 sq. ft	No
4	Family Room	18'6" x 13'0"	234 sq. ft	No
5	Bedroom	8'3" x 12'8"	105 sq. ft	No
6	Office	9'3" x 9'9"	91 sq. ft	Yes
7	Utility	19'5" x 13'3"	242 sq. ft	No

Home report

88 Stripers Lane, North Shore, Moneta, Franklin County, Virginia,
United States, 24121



Room dimensions

Floor 2 Total:1444sqft Excluded: 83sqft

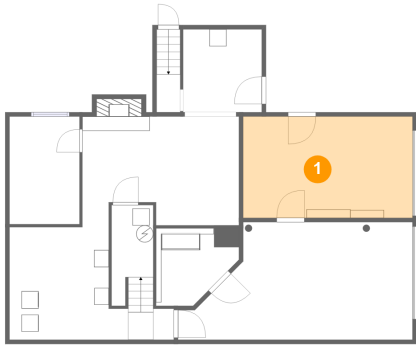
#		Max Dimensions	sqft	Included
8	Bedroom	9'11" x 13'5"	133 sq. ft	Yes
9	Bedroom	13'8" x 12'6"	148 sq. ft	Yes
10	Primary Bedroom	14'2" x 12'9"	180 sq. ft	Yes
11	Hall	3'4" x 7'9"	26 sq. ft	Yes
12	Dining Area	8'2" x 13'3"	109 sq. ft	Yes
13	W.I.C.	4'6" x 7'9"	35 sq. ft	Yes
14	Living Room	15'9" x 12'9"	200 sq. ft	Yes
15	Sunroom	16'0" x 9'9"	183 sq. ft	Yes
16	Porch	8'11" x 7'8"	83 sq. ft	No
17	Bath	5'0" x 9'4"	47 sq. ft	Yes
18	Kitchen	12'10" x 13'3"	164 sq. ft	Yes

Home report

88 Stripers Lane, North Shore, Moneta, Franklin County, Virginia,
United States, 24121

#		Max Dimensions	sqft	Included
19	Bath	8'2" x 5'2"	42 sq. ft	Yes
20	Hall	7'9" x 3'9"	27 sq. ft	Yes

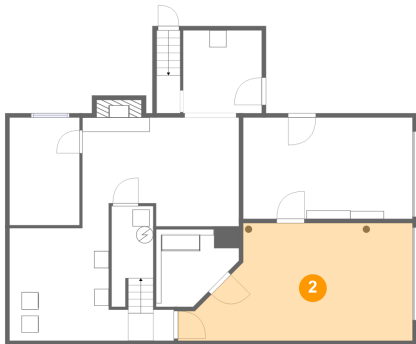
1 Floor 1 - Garage



Max Dimensions: 20'0" x 11'11"
Calculated Area: 238 sq. ft
Included: No

Heated: No
Finished: No
Enclosed: Yes
Contiguous: Yes
Permitted: Yes
Wet space: No
Addition: No
Conversion: No

2 Floor 1 - Garage

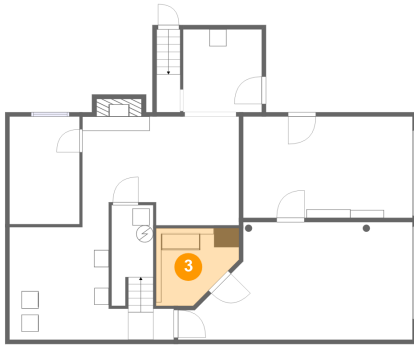


Max Dimensions: 27'8" x 13'10"
Calculated Area: 320 sq. ft
Included: No

Heated: No
Finished: No
Enclosed: Yes
Contiguous: Yes
Permitted: Yes
Wet space: No
Addition: No
Conversion: No

88 Stripers Lane, North Shore, Moneta, Franklin County, Virginia,
United States, 24121

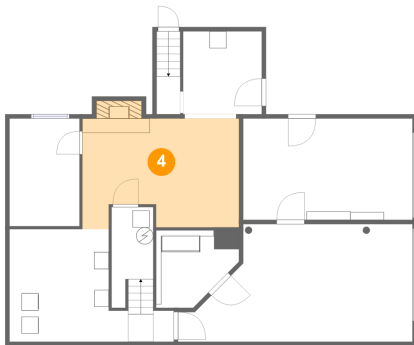
3 Floor 1 - Storage



Max Dimensions: 9'9" x 9'2"
Calculated Area: 75 sq. ft
Included: No

Heated: No
Finished: No
Enclosed: No
Contiguous: Yes
Permitted: Yes
Wet space: No
Addition: No
Conversion: No

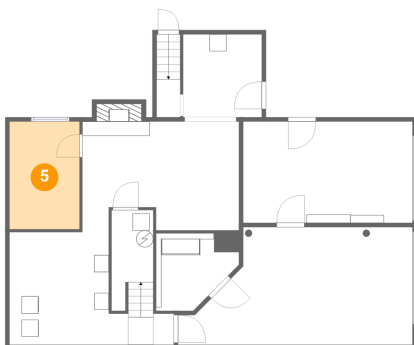
4 Floor 1 - Family Room



Max Dimensions: 18'6" x 13'0"
Calculated Area: 234 sq. ft
Included: No

Heated: Yes
Finished: No
Enclosed: Yes
Contiguous: Yes
Permitted: Yes
Wet space: No
Addition: No
Conversion: No

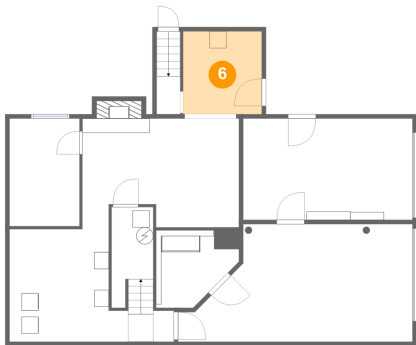
5 Floor 1 - Bedroom



Max Dimensions: 8'3" x 12'8"
Calculated Area: 105 sq. ft
Included: No

Heated: Yes
Finished: No
Enclosed: Yes
Contiguous: Yes
Permitted: Yes
Wet space: No
Addition: No
Conversion: No

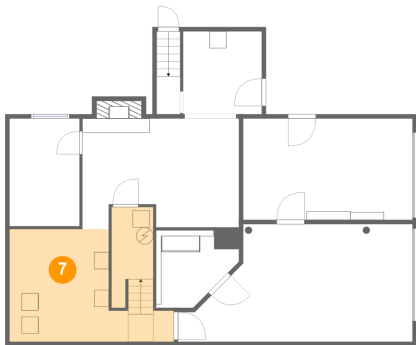
6 Floor 1 - Office



Max Dimensions: 9'3" x 9'9"
Calculated Area: 91 sq. ft
Included: Yes

Heated: Yes
Finished: Yes
Enclosed: Yes
Contiguous: Yes
Permitted: Yes
Wet space: No
Addition: No
Conversion: No

7 Floor 1 - Utility



Max Dimensions: 19'5" x 13'3"
Calculated Area: 242 sq. ft
Included: No

Heated: Yes
Finished: No
Enclosed: Yes
Contiguous: Yes
Permitted: Yes
Wet space: No
Addition: No
Conversion: No

8 Floor 2 - Bedroom



Max Dimensions: 9'11" x 13'5"
Calculated Area: 133 sq. ft
Included: Yes

Heated: Yes
Finished: Yes
Enclosed: Yes
Contiguous: Yes
Permitted: Yes
Wet space: No
Addition: No
Conversion: No

88 Stripers Lane, North Shore, Moneta, Franklin County, Virginia,
United States, 24121

9 Floor 2 - Bedroom



Max Dimensions: 13'8" x 12'6"
Calculated Area: 148 sq. ft
Included: Yes

Heated: Yes
Finished: Yes
Enclosed: Yes
Contiguous: Yes
Permitted: Yes
Wet space: No
Addition: No
Conversion: No

10 Floor 2 - Primary Bedroom



Max Dimensions: 14'2" x 12'9"
Calculated Area: 180 sq. ft
Included: Yes

Heated: Yes
Finished: Yes
Enclosed: Yes
Contiguous: Yes
Permitted: Yes
Wet space: No
Addition: No
Conversion: No

11 Floor 2 - Hall



Max Dimensions: 3'4" x 7'9"
Calculated Area: 26 sq. ft
Included: Yes

Heated: Yes
Finished: Yes
Enclosed: Yes
Contiguous: Yes
Permitted: Yes
Wet space: No
Addition: No
Conversion: No

12 Floor 2 - Dining Area



Max Dimensions: 8'2" x 13'3"
Calculated Area: 109 sq. ft
Included: Yes

Heated: Yes
Finished: Yes
Enclosed: Yes
Contiguous: Yes
Permitted: Yes
Wet space: No
Addition: No
Conversion: No

13 Floor 2 - W.I.C.



Max Dimensions: 4'6" x 7'9"
Calculated Area: 35 sq. ft
Included: Yes

Heated: Yes
Finished: Yes
Enclosed: Yes
Contiguous: Yes
Permitted: Yes
Wet space: No
Addition: No
Conversion: No

14 Floor 2 - Living Room



Max Dimensions: 15'9" x 12'9"
Calculated Area: 200 sq. ft
Included: Yes

Heated: Yes
Finished: Yes
Enclosed: Yes
Contiguous: Yes
Permitted: Yes
Wet space: No
Addition: No
Conversion: No

88 Stripers Lane, North Shore, Moneta, Franklin County, Virginia,
United States, 24121

15 Floor 2 - Sunroom



Max Dimensions: 16'0" x 9'9"
Calculated Area: 183 sq. ft
Included: Yes

Heated: Yes
Finished: Yes
Enclosed: Yes
Contiguous: Yes
Permitted: Yes
Wet space: No
Addition: No
Conversion: No

16 Floor 2 - Porch



Max Dimensions: 8'11" x 7'8"
Calculated Area: 83 sq. ft
Included: No

Heated: No
Finished: Yes
Enclosed: No
Contiguous: Yes
Permitted: Yes
Wet space: No
Addition: No
Conversion: No

17 Floor 2 - Bath



Max Dimensions: 5'0" x 9'4"
Calculated Area: 47 sq. ft
Included: Yes

Heated: Yes
Finished: Yes
Enclosed: Yes
Contiguous: Yes
Permitted: Yes
Wet space: Yes
Addition: No
Conversion: No

18 Floor 2 - Kitchen



Max Dimensions: 12'10" x 13'3"
Calculated Area: 164 sq. ft
Included: Yes

Heated: Yes
Finished: Yes
Enclosed: Yes
Contiguous: Yes
Permitted: Yes
Wet space: No
Addition: No
Conversion: No

19 Floor 2 - Bath



Max Dimensions: 8'2" x 5'2"
Calculated Area: 42 sq. ft
Included: Yes

Heated: Yes
Finished: Yes
Enclosed: Yes
Contiguous: Yes
Permitted: Yes
Wet space: Yes
Addition: No
Conversion: No

20 Floor 2 - Hall



Max Dimensions: 7'9" x 3'9"
Calculated Area: 27 sq. ft
Included: Yes

Heated: Yes
Finished: Yes
Enclosed: Yes
Contiguous: Yes
Permitted: Yes
Wet space: No
Addition: No
Conversion: No