


132 Crossing Ridge Trail, Cranberry Township, Butler County, Pennsylvania, United States,



Property Summary

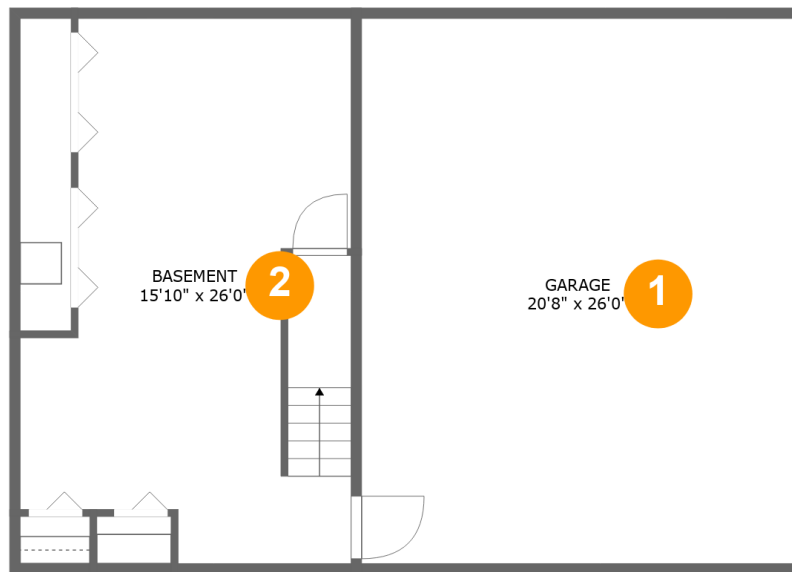
 **1** garages  **4** bedrooms  **2** bathrooms  **1** half baths

 **3** floors

 **2,446** Gross Living Area sqft

 **3,490** total sqft

132 Crossing Ridge Trail, Cranberry Township, Butler County, Pennsylvania, United States,



Room Dimensions

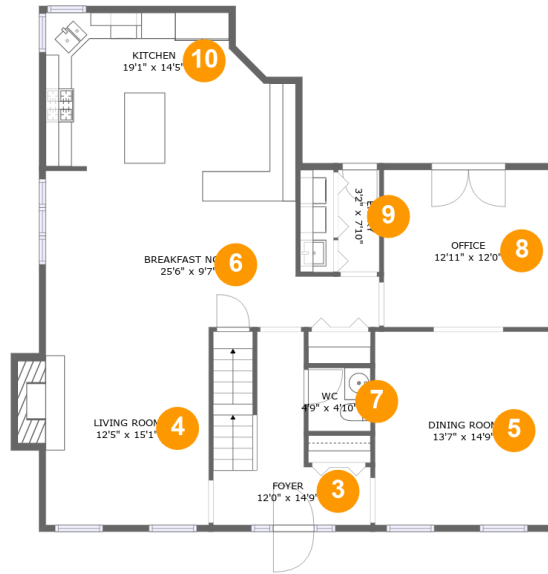
Floor 1

Total sqft: 1028

Living area: 0

#	Room name	Dimensions	Area (sqft)	Counted as Living Area
1	Garage	20'8" x 26'0"	537 sq. ft	No
2	Basement	15'10" x 26'0"	345 sq. ft	No

132 Crossing Ridge Trail, Cranberry Township, Butler County, Pennsylvania, United States,



Room Dimensions

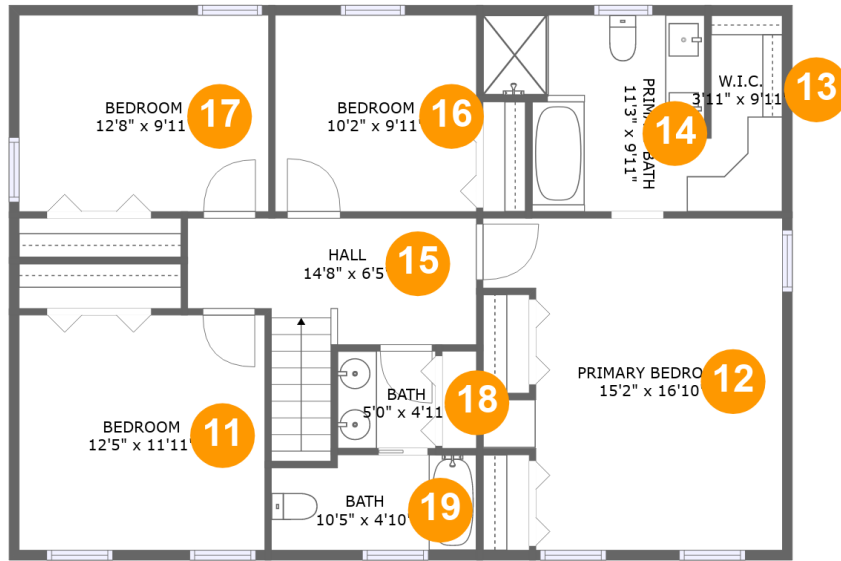
Floor 2

Total sqft: 1347

Living area: 1331

#	Room name	Dimensions	Area (sqft)	Counted as Living Area
3	Foyer	12'0" x 14'9"	123 sq. ft	Yes
4	Living Room	12'5" x 15'1"	202 sq. ft	Yes
5	Dining Room	13'7" x 14'9"	200 sq. ft	Yes
6	Breakfast Nook	25'6" x 9'7"	208 sq. ft	Yes
7	Wc	4'9" x 4'10"	23 sq. ft	Yes
8	Office	12'11" x 12'0"	155 sq. ft	Yes
9	Entry	3'2" x 7'10"	25 sq. ft	Yes
10	Kitchen	19'1" x 14'5"	249 sq. ft	Yes

132 Crossing Ridge Trail, Cranberry Township, Butler County, Pennsylvania, United States,



Room Dimensions

Floor 3

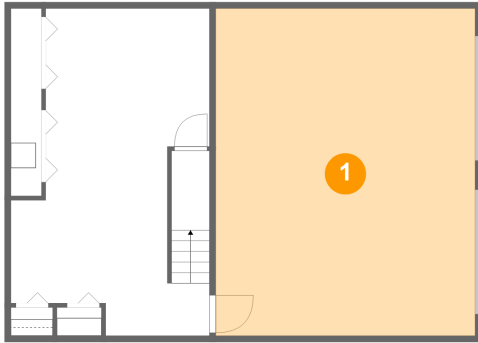
Total sqft: 1115

Living area: 1115

#	Room name	Dimensions	Area (sqft)	Counted as Living Area
11	Bedroom	12'5" x 11'11"	148 sq. ft	Yes
12	Primary Bedroom	15'2" x 16'10"	226 sq. ft	Yes
13	W.i.c.	3'11" x 9'11"	37 sq. ft	Yes
14	Primary Bath	11'3" x 9'11"	97 sq. ft	Yes
15	Hall	14'8" x 6'5"	104 sq. ft	Yes
16	Bedroom	10'2" x 9'11"	101 sq. ft	Yes
17	Bedroom	12'8" x 9'11"	126 sq. ft	Yes
18	Bath	5'0" x 4'11"	24 sq. ft	Yes
19	Bath	10'5" x 4'10"	48 sq. ft	Yes

132 Crossing Ridge Trail, Cranberry Township, Butler County, Pennsylvania, United States,

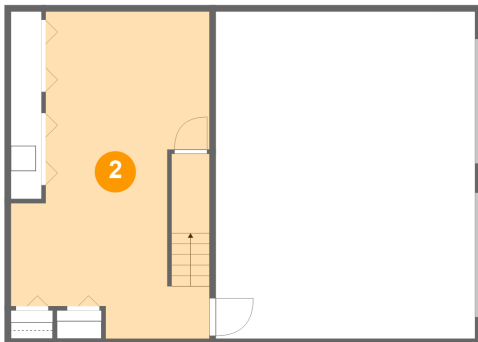
1 Floor 1 - Garage



Dimensions: 20'8" x 26'0"
Area: 537 sq. ft
Counted as Living Area: No

Heated: No
Finished: No
Enclosed: Yes
Contiguous: Yes
Permitted: Yes
Wet Space: No
Addition: No
Conversion: No

2 Floor 1 - Basement



Dimensions: 15'10" x 26'0"
Area: 345 sq. ft
Counted as Living Area: No

Heated: Yes
Finished: No
Enclosed: Yes
Contiguous: Yes
Permitted: Yes
Wet Space: No
Addition: No
Conversion: No

132 Crossing Ridge Trail, Cranberry Township, Butler County, Pennsylvania, United States,

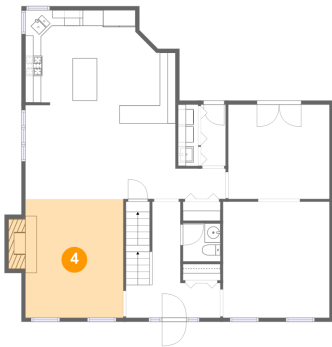
3 Floor 2 - Foyer



Dimensions: 12'0" x 14'9"
Area: 123 sq. ft
Counted as Living Area:
Yes

Heated: Yes
Finished: Yes
Enclosed: Yes
Contiguous:
Yes
Permitted: Yes
Wet Space: No
Addition: No
Conversion: No

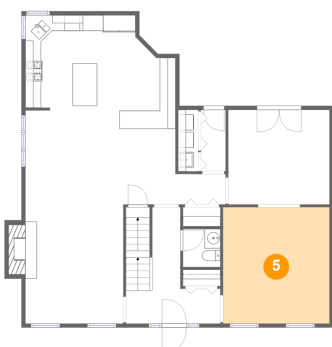
4 Floor 2 - Living Room



Dimensions: 12'5" x 15'1"
Area: 202 sq. ft
Counted as Living Area:
Yes

Heated: Yes
Finished: Yes
Enclosed: Yes
Contiguous:
Yes
Permitted: Yes
Wet Space: No
Addition: No
Conversion: No

5 Floor 2 - Dining Room

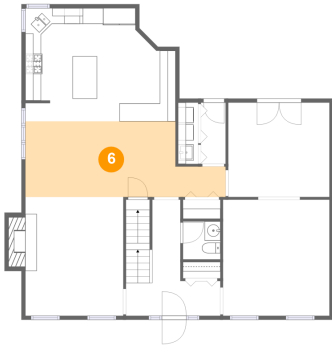


Dimensions: 13'7" x 14'9"
Area: 200 sq. ft
Counted as Living Area:
Yes

Heated: Yes
Finished: Yes
Enclosed: Yes
Contiguous:
Yes
Permitted: Yes
Wet Space: No
Addition: No
Conversion: No

132 Crossing Ridge Trail, Cranberry Township, Butler County, Pennsylvania, United States,

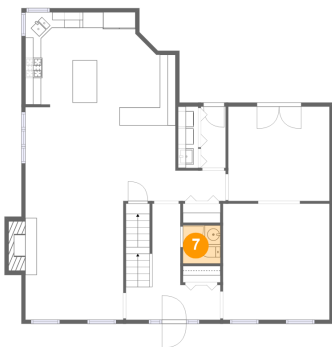
6 Floor 2 - Breakfast Nook



Dimensions: 25'6" x 9'7"
Area: 208 sq. ft
Counted as Living Area:
Yes

Heated: Yes
Finished: Yes
Enclosed: Yes
Contiguous:
Yes
Permitted: Yes
Wet Space: No
Addition: No
Conversion: No

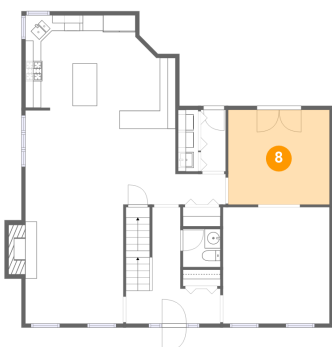
7 Floor 2 - Wc



Dimensions: 4'9" x 4'10"
Area: 23 sq. ft
Counted as Living Area:
Yes

Heated: Yes
Finished: Yes
Enclosed: Yes
Contiguous:
Yes
Permitted: Yes
Wet Space: Yes
Addition: No
Conversion: No

8 Floor 2 - Office

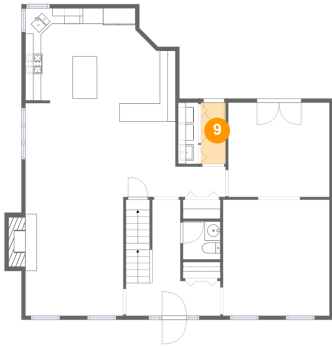


Dimensions: 12'11" x 12'0"
Area: 155 sq. ft
Counted as Living Area:
Yes

Heated: Yes
Finished: Yes
Enclosed: Yes
Contiguous:
Yes
Permitted: Yes
Wet Space: No
Addition: No
Conversion: No

132 Crossing Ridge Trail, Cranberry Township, Butler County, Pennsylvania, United States,

9 Floor 2 - Entry



Dimensions: 3'2" x 7'10"
Area: 25 sq. ft
Counted as Living Area:
Yes

Heated: Yes
Finished: Yes
Enclosed: Yes
Contiguous:
Yes
Permitted: Yes
Wet Space: No
Addition: No
Conversion: No

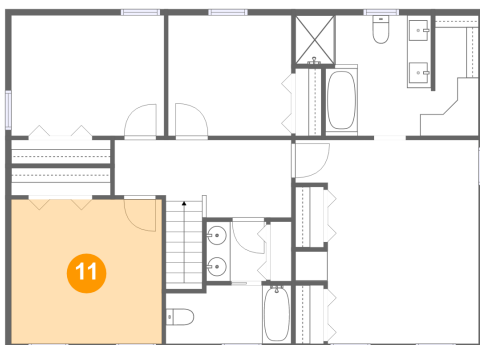
10 Floor 2 - Kitchen



Dimensions: 19'1" x 14'5"
Area: 249 sq. ft
Counted as Living Area:
Yes

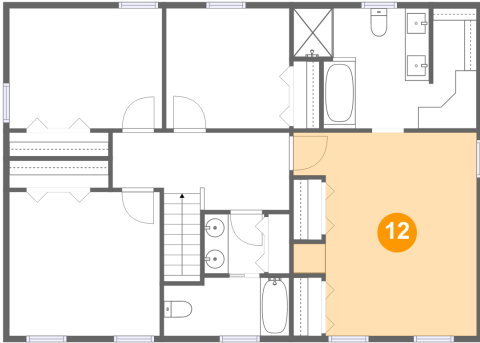
Heated: Yes
Finished: Yes
Enclosed: Yes
Contiguous:
Yes
Permitted: Yes
Wet Space: No
Addition: No
Conversion: No

11 Floor 3 - Bedroom



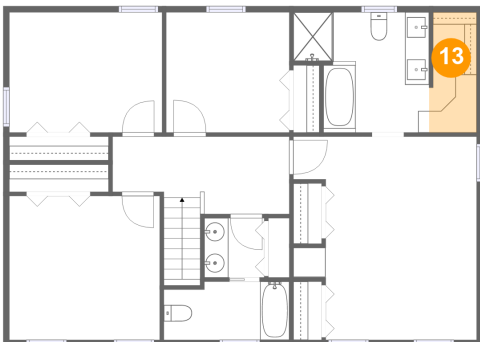
Dimensions: 12'5" x 11'11"
Area: 148 sq. ft
Counted as Living Area:
Yes

Heated: Yes
Finished: Yes
Enclosed: Yes
Contiguous:
Yes
Permitted: Yes
Wet Space: No
Addition: No
Conversion: No

**132 Crossing Ridge Trail, Cranberry Township,
Butler County, Pennsylvania, United States,****12 Floor 3 - Primary Bedroom**

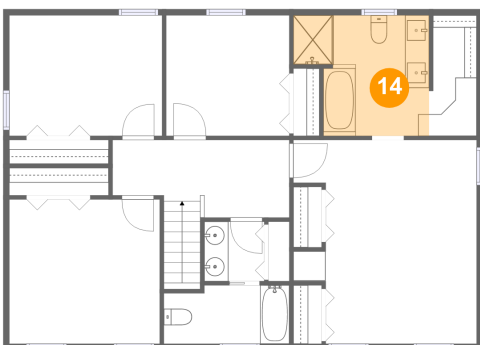
Dimensions: 15'2" x 16'10"
Area: 226 sq. ft
Counted as Living Area:
Yes

Heated: Yes
Finished: Yes
Enclosed: Yes
Contiguous:
Yes
Permitted: Yes
Wet Space: No
Addition: No
Conversion: No

13 Floor 3 - W.i.c.

Dimensions: 3'11" x 9'11"
Area: 37 sq. ft
Counted as Living Area:
Yes

Heated: Yes
Finished: Yes
Enclosed: Yes
Contiguous:
Yes
Permitted: Yes
Wet Space: No
Addition: No
Conversion: No

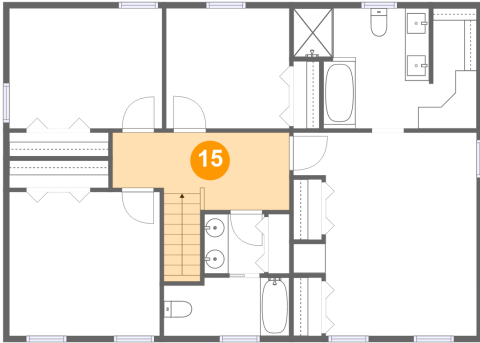
14 Floor 3 - Primary Bath

Dimensions: 11'3" x 9'11"
Area: 97 sq. ft
Counted as Living Area:
Yes

Heated: Yes
Finished: Yes
Enclosed: Yes
Contiguous:
Yes
Permitted: Yes
Wet Space: Yes
Addition: No
Conversion: No

132 Crossing Ridge Trail, Cranberry Township, Butler County, Pennsylvania, United States,

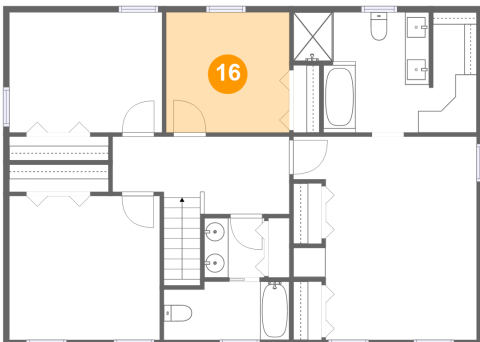
15 Floor 3 - Hall



Dimensions: 14'8" x 6'5"
Area: 104 sq. ft
Counted as Living Area:
Yes

Heated: Yes
Finished: Yes
Enclosed: Yes
Contiguous:
Yes
Permitted: Yes
Wet Space: No
Addition: No
Conversion: No

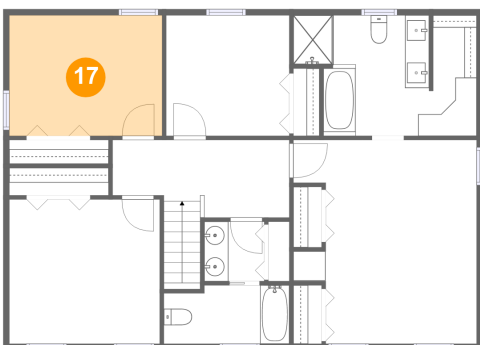
16 Floor 3 - Bedroom



Dimensions: 10'2" x 9'11"
Area: 101 sq. ft
Counted as Living Area:
Yes

Heated: Yes
Finished: Yes
Enclosed: Yes
Contiguous:
Yes
Permitted: Yes
Wet Space: No
Addition: No
Conversion: No

17 Floor 3 - Bedroom

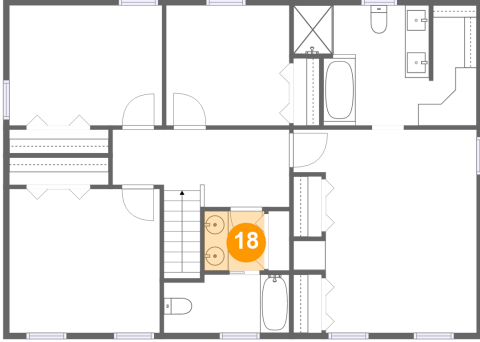


Dimensions: 12'8" x 9'11"
Area: 126 sq. ft
Counted as Living Area:
Yes

Heated: Yes
Finished: Yes
Enclosed: Yes
Contiguous:
Yes
Permitted: Yes
Wet Space: No
Addition: No
Conversion: No

132 Crossing Ridge Trail, Cranberry Township, Butler County, Pennsylvania, United States,

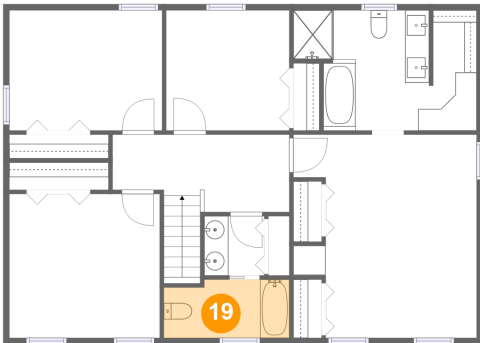
18 Floor 3 - Bath



Dimensions: 5'0" x 4'11"
Area: 24 sq. ft
Counted as Living Area:
Yes

Heated: Yes
Finished: Yes
Enclosed: Yes
Contiguous:
Yes
Permitted: Yes
Wet Space: Yes
Addition: No
Conversion: No

19 Floor 3 - Bath



Dimensions: 10'5" x 4'10"
Area: 48 sq. ft
Counted as Living Area:
Yes

Heated: Yes
Finished: Yes
Enclosed: Yes
Contiguous:
Yes
Permitted: Yes
Wet Space: Yes
Addition: No
Conversion: No