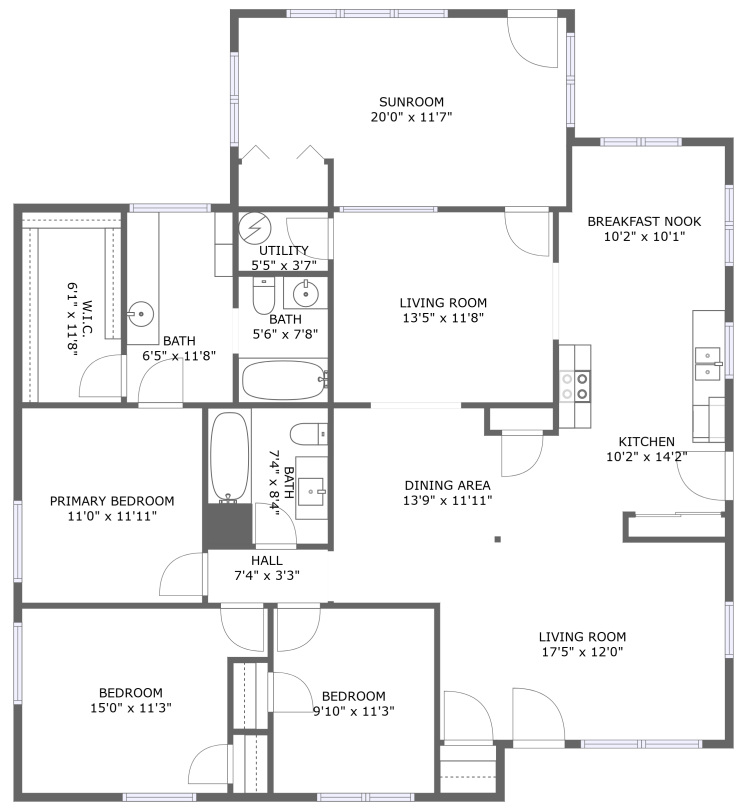


Home report

2912 Rocky Creek Road, South Augusta, Augusta, Richmond County, Georgia, United States, 30906



FLOOR 1


Total GLA: 1847 sq. ft


Floor 1: 1847 sq. ft

Excluded:

Property summary

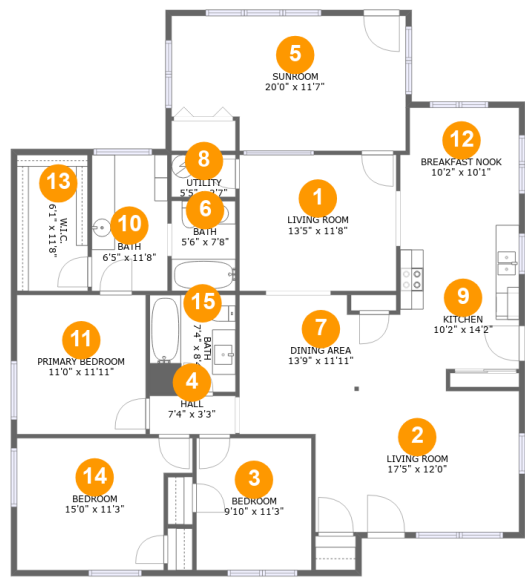
 1 Floors

 3 Bedrooms

 2 Bathrooms

Home report

2912 Rocky Creek Road, South Augusta, Augusta, Richmond County, Georgia, United States, 30906



Room dimensions

Floor 1

Total:1847sqft Excluded: 0sqft

#		Max Dimensions	sqft	Included
1	Living Room	13'5" x 11'8"	156 sq. ft	Yes
2	Living Room	17'5" x 12'0"	210 sq. ft	Yes
3	Bedroom	9'10" x 11'3"	111 sq. ft	Yes
4	Hall	7'4" x 3'3"	24 sq. ft	Yes
5	Sunroom	20'0" x 11'7"	214 sq. ft	Yes
6	Bath	5'6" x 7'8"	42 sq. ft	Yes
7	Dining Area	13'9" x 11'11"	129 sq. ft	Yes
8	Utility	5'5" x 3'7"	20 sq. ft	Yes
9	Kitchen	10'2" x 14'2"	132 sq. ft	Yes
10	Bath	6'5" x 11'8"	76 sq. ft	Yes
11	Primary Bedroom	11'0" x 11'11"	131 sq. ft	Yes

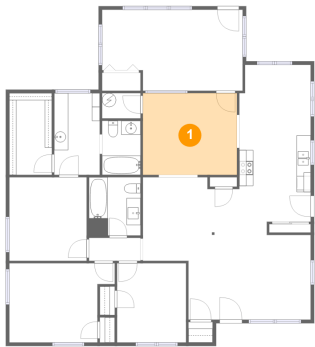
Home report

2912 Rocky Creek Road, South Augusta, Augusta, Richmond
County, Georgia, United States, 30906

#		Max Dimensions	sqft	Included
12	Breakfast Nook	10'2" x 10'1"	99 sq. ft	Yes
13	W.I.C.	6'1" x 11'8"	71 sq. ft	Yes
14	Bedroom	15'0" x 11'3"	149 sq. ft	Yes
15	Bath	7'4" x 8'4"	61 sq. ft	Yes

2912 Rocky Creek Road, South Augusta, Augusta, Richmond
County, Georgia, United States, 30906

1 Floor 1 - Living Room



Max Dimensions: 13'5" x 11'8"
Calculated Area: 156 sq. ft
Included: Yes

Heated: Yes
Finished: Yes
Enclosed: Yes
Contiguous: Yes
Permitted: Yes
Wet space: No
Addition: No
Conversion: No

2 Floor 1 - Living Room

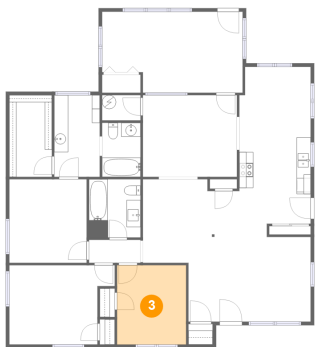


Max Dimensions: 17'5" x 12'0"
Calculated Area: 210 sq. ft
Included: Yes

Heated: Yes
Finished: Yes
Enclosed: Yes
Contiguous: Yes
Permitted: Yes
Wet space: No
Addition: No
Conversion: No

2912 Rocky Creek Road, South Augusta, Augusta, Richmond
County, Georgia, United States, 30906

3 Floor 1 - Bedroom



Max Dimensions: 9'10" x 11'3"
Calculated Area: 111 sq. ft
Included: Yes

Heated: Yes
Finished: Yes
Enclosed: Yes
Contiguous: Yes
Permitted: Yes
Wet space: No
Addition: No
Conversion: No

4 Floor 1 - Hall



Max Dimensions: 7'4" x 3'3"
Calculated Area: 24 sq. ft
Included: Yes

Heated: Yes
Finished: Yes
Enclosed: Yes
Contiguous: Yes
Permitted: Yes
Wet space: No
Addition: No
Conversion: No

5 Floor 1 - Sunroom



Max Dimensions: 20'0" x 11'7"
Calculated Area: 214 sq. ft
Included: Yes

Heated: Yes
Finished: Yes
Enclosed: Yes
Contiguous: Yes
Permitted: Yes
Wet space: No
Addition: No
Conversion: No

2912 Rocky Creek Road, South Augusta, Augusta, Richmond
County, Georgia, United States, 30906

6 Floor 1 - Bath



Max Dimensions: 5'6" x 7'8"
Calculated Area: 42 sq. ft
Included: Yes

Heated: Yes
Finished: Yes
Enclosed: Yes
Contiguous: Yes
Permitted: Yes
Wet space: Yes
Addition: No
Conversion: No

7 Floor 1 - Dining Area



Max Dimensions: 13'9" x 11'11"
Calculated Area: 129 sq. ft
Included: Yes

Heated: Yes
Finished: Yes
Enclosed: Yes
Contiguous: Yes
Permitted: Yes
Wet space: No
Addition: No
Conversion: No

8 Floor 1 - Utility



Max Dimensions: 5'5" x 3'7"
Calculated Area: 20 sq. ft
Included: Yes

Heated: Yes
Finished: Yes
Enclosed: Yes
Contiguous: Yes
Permitted: Yes
Wet space: No
Addition: No
Conversion: No

2912 Rocky Creek Road, South Augusta, Augusta, Richmond
County, Georgia, United States, 30906

9 Floor 1 - Kitchen



Max Dimensions: 10'2" x 14'2"
Calculated Area: 132 sq. ft
Included: Yes

Heated: Yes
Finished: Yes
Enclosed: Yes
Contiguous: Yes
Permitted: Yes
Wet space: No
Addition: No
Conversion: No

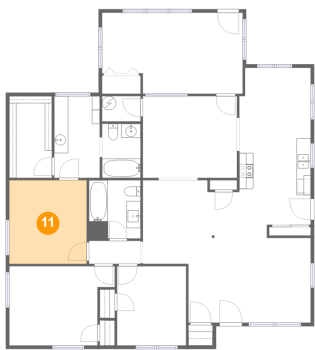
10 Floor 1 - Bath



Max Dimensions: 6'5" x 11'8"
Calculated Area: 76 sq. ft
Included: Yes

Heated: Yes
Finished: Yes
Enclosed: Yes
Contiguous: Yes
Permitted: Yes
Wet space: Yes
Addition: No
Conversion: No

11 Floor 1 - Primary Bedroom

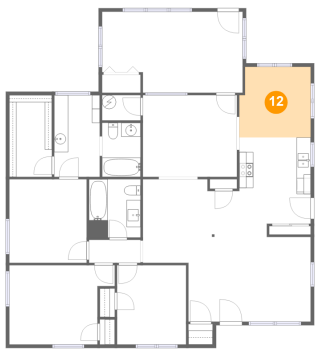


Max Dimensions: 11'0" x 11'11"
Calculated Area: 131 sq. ft
Included: Yes

Heated: Yes
Finished: Yes
Enclosed: Yes
Contiguous: Yes
Permitted: Yes
Wet space: No
Addition: No
Conversion: No

2912 Rocky Creek Road, South Augusta, Augusta, Richmond
County, Georgia, United States, 30906

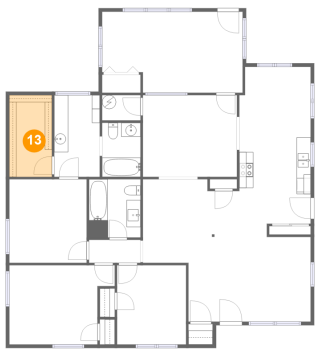
12 Floor 1 - Breakfast Nook



Max Dimensions: 10'2" x 10'1"
Calculated Area: 99 sq. ft
Included: Yes

Heated: Yes
Finished: Yes
Enclosed: Yes
Contiguous: Yes
Permitted: Yes
Wet space: No
Addition: No
Conversion: No

13 Floor 1 - W.I.C.



Max Dimensions: 6'1" x 11'8"
Calculated Area: 71 sq. ft
Included: Yes

Heated: Yes
Finished: Yes
Enclosed: Yes
Contiguous: Yes
Permitted: Yes
Wet space: No
Addition: No
Conversion: No

14 Floor 1 - Bedroom



Max Dimensions: 15'0" x 11'3"
Calculated Area: 149 sq. ft
Included: Yes

Heated: Yes
Finished: Yes
Enclosed: Yes
Contiguous: Yes
Permitted: Yes
Wet space: No
Addition: No
Conversion: No

2912 Rocky Creek Road, South Augusta, Augusta, Richmond
County, Georgia, United States, 30906

15 Floor 1 - Bath



Max Dimensions: 7'4" x 8'4"
Calculated Area: 61 sq. ft
Included: Yes

Heated: Yes
Finished: Yes
Enclosed: Yes
Contiguous: Yes
Permitted: Yes
Wet space: Yes
Addition: No
Conversion: No