



Home report


261 River Cove Road, Mt. Carmel by the River, Huntsville,
Madison County, Alabama, United States, 35811





Property summary


 **2** Garages


 **6** Bedrooms

 **4** Bathrooms

 **1** Half baths

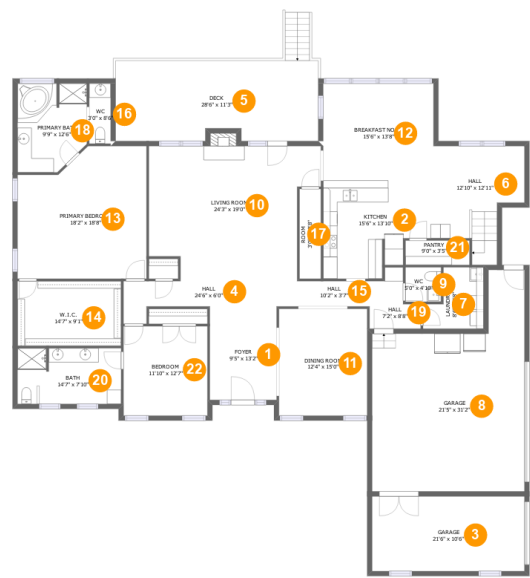
 **2** Floors

 **5,215** Gross living area sqft

 **6,836** Total sqft

Home report

261 River Cove Road, Mt. Carmel by the River, Huntsville,
Madison County, Alabama, United States, 35811



Room dimensions

Floor 1 Total sqft: 3890 Living area: 2741

#		Dimensions	sqft	Counted as living area
1	Foyer	9'5" x 13'2"	124 sq. ft	Yes
2	Kitchen	15'6" x 13'10"	184 sq. ft	Yes
3	Garage	21'6" x 10'6"	226 sq. ft	No
4	Hall	24'6" x 6'0"	95 sq. ft	Yes
5	Deck	28'6" x 11'3"	314 sq. ft	No
6	Hall	12'10" x 12'11"	160 sq. ft	Yes
7	Laundry	8'6" x 8'8"	59 sq. ft	Yes
8	Garage	21'5" x 31'2"	522 sq. ft	No
9	WC	5'0" x 4'10"	24 sq. ft	Yes
10	Living Room	24'3" x 19'0"	407 sq. ft	Yes
11	Dining Room	12'4" x 15'0"	187 sq. ft	Yes

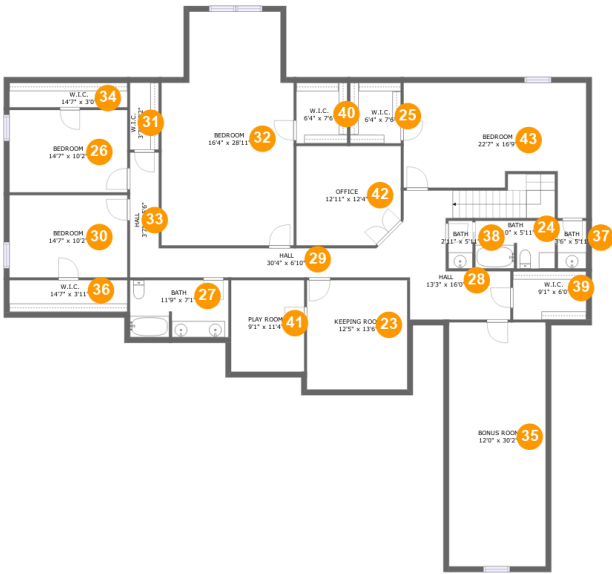
Home report

**261 River Cove Road, Mt. Carmel by the River, Huntsville,
Madison County, Alabama, United States, 35811**

#		Dimensions	sqft	Counted as living area
12	Breakfast Nook	15'6" x 13'8"	212 sq. ft	Yes
13	Primary Bedroom	18'2" x 18'8"	308 sq. ft	Yes
14	W.I.C.	14'7" x 9'1"	133 sq. ft	Yes
15	Hall	10'2" x 3'7"	36 sq. ft	Yes
16	WC	3'0" x 8'6"	26 sq. ft	Yes
17	Room	3'0" x 12'8"	38 sq. ft	Yes
18	Primary Bath	9'9" x 12'6"	113 sq. ft	Yes
19	Hall	7'2" x 8'8"	45 sq. ft	Yes
20	Bath	14'7" x 7'10"	113 sq. ft	Yes
21	Pantry	9'0" x 3'5"	31 sq. ft	Yes
22	Bedroom	11'10" x 12'7"	149 sq. ft	Yes

Home report

261 River Cove Road, Mt. Carmel by the River, Huntsville,
Madison County, Alabama, United States, 35811



Room dimensions

Floor 2 Total sqft: 2946 Living area: 2474

#		Dimensions	sqft	Counted as living area
23	Keeping Room	12'5" x 13'6"	109 sq. ft	Yes
24	Bath	9'10" x 5'11"	57 sq. ft	Yes
25	W.I.C.	6'4" x 7'6"	40 sq. ft	Yes
26	Bedroom	14'7" x 10'2"	149 sq. ft	Yes
27	Bath	11'9" x 7'1"	85 sq. ft	Yes
28	Hall	13'3" x 16'0"	166 sq. ft	Yes
29	Hall	30'4" x 6'10"	116 sq. ft	Yes
30	Bedroom	14'7" x 10'2"	149 sq. ft	Yes
31	W.I.C.	3'7" x 7'2"	26 sq. ft	Yes
32	Bedroom	16'4" x 28'11"	423 sq. ft	Yes
33	Hall	3'7" x 15'6"	55 sq. ft	Yes

Home report

**261 River Cove Road, Mt. Carmel by the River, Huntsville,
Madison County, Alabama, United States, 35811**

#		Dimensions	sqft	Counted as living area
34	W.I.C.	14'7" x 3'0"	28 sq. ft	Yes
35	Bonus Room	12'0" x 30'2"	217 sq. ft	Yes
36	W.I.C.	14'7" x 3'11"	41 sq. ft	Yes
37	Bath	3'6" x 5'11"	21 sq. ft	Yes
38	Bath	2'11" x 5'11"	18 sq. ft	Yes
39	W.I.C.	9'1" x 6'0"	39 sq. ft	Yes
40	W.I.C.	6'4" x 7'6"	40 sq. ft	Yes
41	Play Room	9'1" x 11'4"	80 sq. ft	Yes
42	Office	12'11" x 12'4"	154 sq. ft	Yes
43	Bedroom	22'7" x 16'9"	269 sq. ft	Yes

261 River Cove Road, Mt. Carmel by the River, Huntsville,
Madison County, Alabama, United States, 35811

1 Floor 1 - Foyer



Dimensions: 9'5" x 13'2"
Area: 124 sq. ft
Counted as living area: Yes

Heated: Yes
Finished: Yes
Enclosed: Yes
Contiguous: Yes
Permitted: Yes
Wet space: No
Addition: No
Conversion: No

2 Floor 1 - Kitchen



Dimensions: 15'6" x 13'10"
Area: 184 sq. ft
Counted as living area: Yes

Heated: Yes
Finished: Yes
Enclosed: Yes
Contiguous: Yes
Permitted: Yes
Wet space: No
Addition: No
Conversion: No

261 River Cove Road, Mt. Carmel by the River, Huntsville,
Madison County, Alabama, United States, 35811

3 Floor 1 - Garage



Dimensions: 21'6" x 10'6"
Area: 226 sq. ft
Counted as living area: No

Heated: No
Finished: No
Enclosed: Yes
Contiguous: Yes
Permitted: Yes
Wet space: No
Addition: No
Conversion: No

4 Floor 1 - Hall



Dimensions: 24'6" x 6'0"
Area: 95 sq. ft
Counted as living area: Yes

Heated: Yes
Finished: Yes
Enclosed: Yes
Contiguous: Yes
Permitted: Yes
Wet space: No
Addition: No
Conversion: No

5 Floor 1 - Deck



Dimensions: 28'6" x 11'3"
Area: 314 sq. ft
Counted as living area: No

Heated: No
Finished: Yes
Enclosed: No
Contiguous: Yes
Permitted: Yes
Wet space: No
Addition: No
Conversion: No

261 River Cove Road, Mt. Carmel by the River, Huntsville,
Madison County, Alabama, United States, 35811

6 Floor 1 - Hall



Dimensions: 12'10" x 12'11"
Area: 160 sq. ft
Counted as living area: Yes

Heated: Yes
Finished: Yes
Enclosed: Yes
Contiguous: Yes
Permitted: Yes
Wet space: No
Addition: No
Conversion: No

7 Floor 1 - Laundry



Dimensions: 8'6" x 8'8"
Area: 59 sq. ft
Counted as living area: Yes

Heated: Yes
Finished: Yes
Enclosed: Yes
Contiguous: Yes
Permitted: Yes
Wet space: No
Addition: No
Conversion: No

8 Floor 1 - Garage



Dimensions: 21'5" x 31'2"
Area: 522 sq. ft
Counted as living area: No

Heated: No
Finished: No
Enclosed: Yes
Contiguous: Yes
Permitted: Yes
Wet space: No
Addition: No
Conversion: No

261 River Cove Road, Mt. Carmel by the River, Huntsville,
Madison County, Alabama, United States, 35811

9 Floor 1 - WC



Dimensions: 5'0" x 4'10"
Area: 24 sq. ft
Counted as living area: Yes

Heated: Yes
Finished: Yes
Enclosed: Yes
Contiguous: Yes
Permitted: Yes
Wet space: Yes
Addition: No
Conversion: No

10 Floor 1 - Living Room



Dimensions: 24'3" x 19'0"
Area: 407 sq. ft
Counted as living area: Yes

Heated: Yes
Finished: Yes
Enclosed: Yes
Contiguous: Yes
Permitted: Yes
Wet space: No
Addition: No
Conversion: No

11 Floor 1 - Dining Room



Dimensions: 12'4" x 15'0"
Area: 187 sq. ft
Counted as living area: Yes

Heated: Yes
Finished: Yes
Enclosed: Yes
Contiguous: Yes
Permitted: Yes
Wet space: No
Addition: No
Conversion: No

261 River Cove Road, Mt. Carmel by the River, Huntsville,
Madison County, Alabama, United States, 35811

12 Floor 1 - Breakfast Nook



Dimensions: 15'6" x 13'8"
Area: 212 sq. ft
Counted as living area: Yes

Heated: Yes
Finished: Yes
Enclosed: Yes
Contiguous: Yes
Permitted: Yes
Wet space: No
Addition: No
Conversion: No

13 Floor 1 - Primary Bedroom



Dimensions: 18'2" x 18'8"
Area: 308 sq. ft
Counted as living area: Yes

Heated: Yes
Finished: Yes
Enclosed: Yes
Contiguous: Yes
Permitted: Yes
Wet space: No
Addition: No
Conversion: No

14 Floor 1 - W.I.C.



Dimensions: 14'7" x 9'1"
Area: 133 sq. ft
Counted as living area: Yes

Heated: Yes
Finished: Yes
Enclosed: Yes
Contiguous: Yes
Permitted: Yes
Wet space: No
Addition: No
Conversion: No

261 River Cove Road, Mt. Carmel by the River, Huntsville,
Madison County, Alabama, United States, 35811

15 Floor 1 - Hall



Dimensions: 10'2" x 3'7"
Area: 36 sq. ft
Counted as living area: Yes

Heated: Yes
Finished: Yes
Enclosed: Yes
Contiguous: Yes
Permitted: Yes
Wet space: No
Addition: No
Conversion: No

16 Floor 1 - WC



Dimensions: 3'0" x 8'6"
Area: 26 sq. ft
Counted as living area: Yes

Heated: Yes
Finished: Yes
Enclosed: Yes
Contiguous: Yes
Permitted: Yes
Wet space: No
Addition: No
Conversion: No

17 Floor 1 - Room



Dimensions: 3'0" x 12'8"
Area: 38 sq. ft
Counted as living area: Yes

Heated: Yes
Finished: Yes
Enclosed: Yes
Contiguous: Yes
Permitted: Yes
Wet space: No
Addition: No
Conversion: No

261 River Cove Road, Mt. Carmel by the River, Huntsville,
Madison County, Alabama, United States, 35811

18 Floor 1 - Primary Bath



Dimensions: 9'9" x 12'6"
Area: 113 sq. ft
Counted as living area: Yes

Heated: Yes
Finished: Yes
Enclosed: Yes
Contiguous: Yes
Permitted: Yes
Wet space: Yes
Addition: No
Conversion: No

19 Floor 1 - Hall



Dimensions: 7'2" x 8'8"
Area: 45 sq. ft
Counted as living area: Yes

Heated: Yes
Finished: Yes
Enclosed: Yes
Contiguous: Yes
Permitted: Yes
Wet space: No
Addition: No
Conversion: No

20 Floor 1 - Bath



Dimensions: 14'7" x 7'10"
Area: 113 sq. ft
Counted as living area: Yes

Heated: Yes
Finished: Yes
Enclosed: Yes
Contiguous: Yes
Permitted: Yes
Wet space: Yes
Addition: No
Conversion: No

Home report

261 River Cove Road, Mt. Carmel by the River, Huntsville,
Madison County, Alabama, United States, 35811

21 Floor 1 - Pantry



Dimensions: 9'0" x 3'5"
Area: 31 sq. ft
Counted as living area: Yes

Heated: Yes
Finished: Yes
Enclosed: Yes
Contiguous: Yes
Permitted: Yes
Wet space: No
Addition: No
Conversion: No

22 Floor 1 - Bedroom



Dimensions: 11'10" x 12'7"
Area: 149 sq. ft
Counted as living area: Yes

Heated: Yes
Finished: Yes
Enclosed: Yes
Contiguous: Yes
Permitted: Yes
Wet space: No
Addition: No
Conversion: No

23 Floor 2 - Keeping Room



Dimensions: 12'5" x 13'6"
Area: 109 sq. ft
Counted as living area: Yes

Heated: Yes
Finished: Yes
Enclosed: Yes
Contiguous: Yes
Permitted: Yes
Wet space: No
Addition: No
Conversion: No

261 River Cove Road, Mt. Carmel by the River, Huntsville,
Madison County, Alabama, United States, 35811

24 Floor 2 - Bath



Dimensions: 9'10" x 5'11"
Area: 57 sq. ft
Counted as living area: Yes

Heated: Yes
Finished: Yes
Enclosed: Yes
Contiguous: Yes
Permitted: Yes
Wet space: Yes
Addition: No
Conversion: No

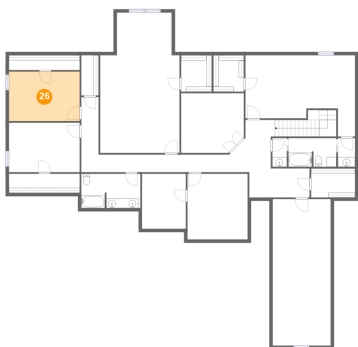
25 Floor 2 - W.I.C.



Dimensions: 6'4" x 7'6"
Area: 40 sq. ft
Counted as living area: Yes

Heated: Yes
Finished: Yes
Enclosed: Yes
Contiguous: Yes
Permitted: Yes
Wet space: No
Addition: No
Conversion: No

26 Floor 2 - Bedroom



Dimensions: 14'7" x 10'2"
Area: 149 sq. ft
Counted as living area: Yes

Heated: Yes
Finished: Yes
Enclosed: Yes
Contiguous: Yes
Permitted: Yes
Wet space: No
Addition: No
Conversion: No

261 River Cove Road, Mt. Carmel by the River, Huntsville,
Madison County, Alabama, United States, 35811

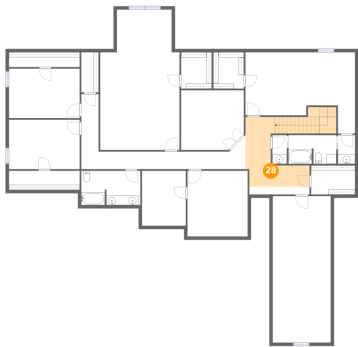
27 Floor 2 - Bath



Dimensions: 11'9" x 7'1"
Area: 85 sq. ft
Counted as living area: Yes

Heated: Yes
Finished: Yes
Enclosed: Yes
Contiguous: Yes
Permitted: Yes
Wet space: Yes
Addition: No
Conversion: No

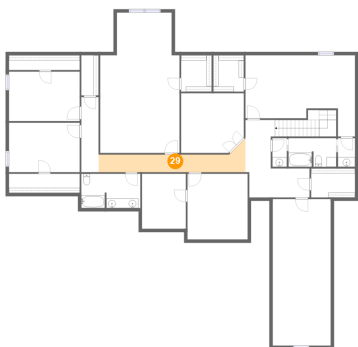
28 Floor 2 - Hall



Dimensions: 13'3" x 16'0"
Area: 166 sq. ft
Counted as living area: Yes

Heated: Yes
Finished: Yes
Enclosed: Yes
Contiguous: Yes
Permitted: Yes
Wet space: No
Addition: No
Conversion: No

29 Floor 2 - Hall

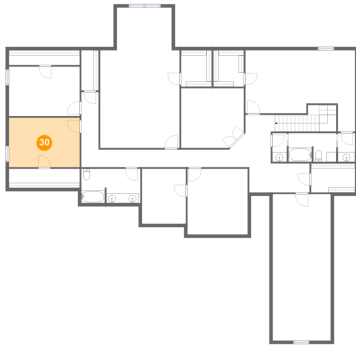


Dimensions: 30'4" x 6'10"
Area: 116 sq. ft
Counted as living area: Yes

Heated: Yes
Finished: Yes
Enclosed: Yes
Contiguous: Yes
Permitted: Yes
Wet space: No
Addition: No
Conversion: No

261 River Cove Road, Mt. Carmel by the River, Huntsville,
Madison County, Alabama, United States, 35811

30 Floor 2 - Bedroom



Dimensions: 14'7" x 10'2"
Area: 149 sq. ft
Counted as living area: Yes

Heated: Yes
Finished: Yes
Enclosed: Yes
Contiguous: Yes
Permitted: Yes
Wet space: No
Addition: No
Conversion: No

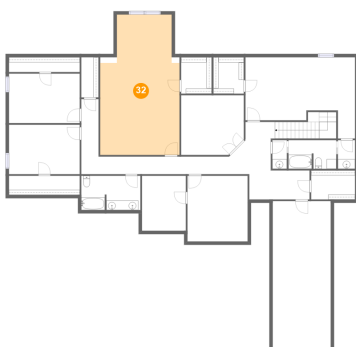
31 Floor 2 - W.I.C.



Dimensions: 3'7" x 7'2"
Area: 26 sq. ft
Counted as living area: Yes

Heated: Yes
Finished: Yes
Enclosed: Yes
Contiguous: Yes
Permitted: Yes
Wet space: No
Addition: No
Conversion: No

32 Floor 2 - Bedroom



Dimensions: 16'4" x 28'11"
Area: 423 sq. ft
Counted as living area: Yes

Heated: Yes
Finished: Yes
Enclosed: Yes
Contiguous: Yes
Permitted: Yes
Wet space: No
Addition: No
Conversion: No

261 River Cove Road, Mt. Carmel by the River, Huntsville,
Madison County, Alabama, United States, 35811

33 Floor 2 - Hall



Dimensions: 3'7" x 15'6"
Area: 55 sq. ft
Counted as living area: Yes

Heated: Yes
Finished: Yes
Enclosed: Yes
Contiguous: Yes
Permitted: Yes
Wet space: No
Addition: No
Conversion: No

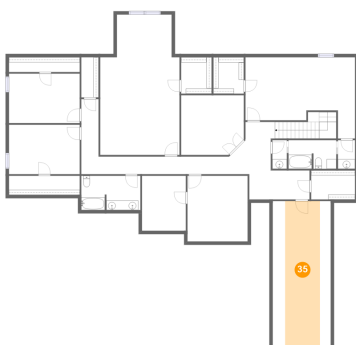
34 Floor 2 - W.I.C.



Dimensions: 14'7" x 3'0"
Area: 28 sq. ft
Counted as living area: Yes

Heated: Yes
Finished: Yes
Enclosed: Yes
Contiguous: Yes
Permitted: Yes
Wet space: No
Addition: No
Conversion: No

35 Floor 2 - Bonus Room



Dimensions: 12'0" x 30'2"
Area: 217 sq. ft
Counted as living area: Yes

Heated: Yes
Finished: Yes
Enclosed: Yes
Contiguous: Yes
Permitted: Yes
Wet space: No
Addition: No
Conversion: No

261 River Cove Road, Mt. Carmel by the River, Huntsville,
Madison County, Alabama, United States, 35811

36 Floor 2 - W.I.C.



Dimensions: 14'7" x 3'11"
Area: 41 sq. ft
Counted as living area: Yes

Heated: Yes
Finished: Yes
Enclosed: Yes
Contiguous: Yes
Permitted: Yes
Wet space: No
Addition: No
Conversion: No

37 Floor 2 - Bath



Dimensions: 3'6" x 5'11"
Area: 21 sq. ft
Counted as living area: Yes

Heated: Yes
Finished: Yes
Enclosed: Yes
Contiguous: Yes
Permitted: Yes
Wet space: Yes
Addition: No
Conversion: No

38 Floor 2 - Bath



Dimensions: 2'11" x 5'11"
Area: 18 sq. ft
Counted as living area: Yes

Heated: Yes
Finished: Yes
Enclosed: Yes
Contiguous: Yes
Permitted: Yes
Wet space: Yes
Addition: No
Conversion: No

261 River Cove Road, Mt. Carmel by the River, Huntsville,
Madison County, Alabama, United States, 35811

39 Floor 2 - W.I.C.



Dimensions: 9'1" x 6'0"
Area: 39 sq. ft
Counted as living area: Yes

Heated: Yes
Finished: Yes
Enclosed: Yes
Contiguous: Yes
Permitted: Yes
Wet space: No
Addition: No
Conversion: No

40 Floor 2 - W.I.C.



Dimensions: 6'4" x 7'6"
Area: 40 sq. ft
Counted as living area: Yes

Heated: Yes
Finished: Yes
Enclosed: Yes
Contiguous: Yes
Permitted: Yes
Wet space: No
Addition: No
Conversion: No

41 Floor 2 - Play Room

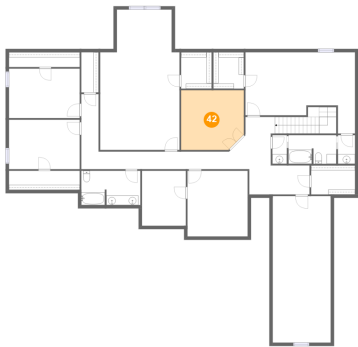


Dimensions: 9'1" x 11'4"
Area: 80 sq. ft
Counted as living area: Yes

Heated: Yes
Finished: Yes
Enclosed: Yes
Contiguous: Yes
Permitted: Yes
Wet space: No
Addition: No
Conversion: No

261 River Cove Road, Mt. Carmel by the River, Huntsville,
Madison County, Alabama, United States, 35811

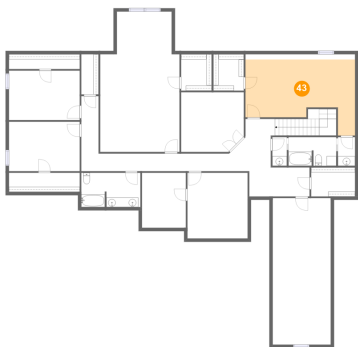
42 Floor 2 - Office



Dimensions: 12'11" x 12'4"
Area: 154 sq. ft
Counted as living area: Yes

Heated: Yes
Finished: Yes
Enclosed: Yes
Contiguous: Yes
Permitted: Yes
Wet space: No
Addition: No
Conversion: No

43 Floor 2 - Bedroom



Dimensions: 22'7" x 16'9"
Area: 269 sq. ft
Counted as living area: Yes

Heated: Yes
Finished: Yes
Enclosed: Yes
Contiguous: Yes
Permitted: Yes
Wet space: No
Addition: No
Conversion: No