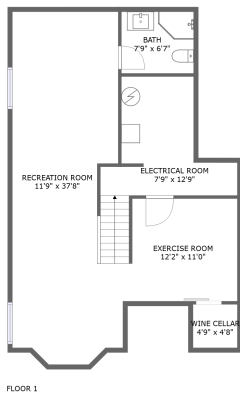
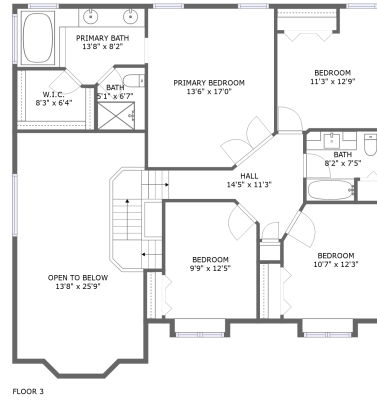
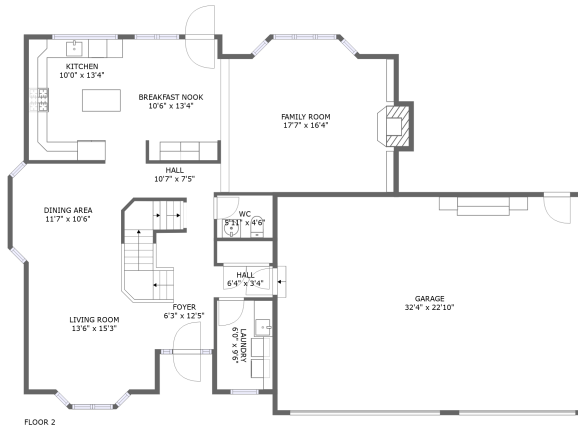



235 Stetson Dr, Cheyenne, WY, US



Property summary

 **1** Garages

 **4** Bedrooms

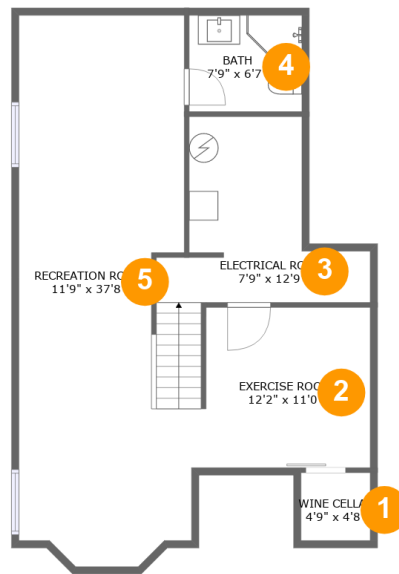
 **3** Bathrooms

 **1** Half baths

 **3** Floors

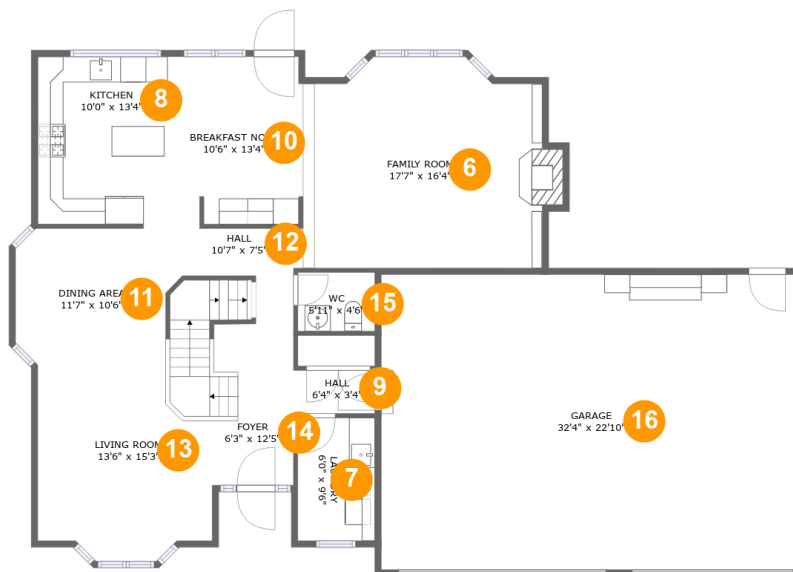
 **3,073** Gross living area sqft

 **4,328** Total sqft

235 Stetson Dr, Cheyenne, WY, US**Room dimensions****Floor 1****Total sqft: 830 Living area: 681**

#		Dimensions	sqft	Counted as living area
1	Basement	4'9" x 4'8"	22 sq. ft	No
2	Exercise Room	12'2" x 11'0"	127 sq. ft	Yes
3	Room	7'9" x 12'9"	110 sq. ft	No
4	Bath	7'9" x 6'7"	51 sq. ft	Yes
5	Recreation Room	11'9" x 37'8"	433 sq. ft	Yes

235 Stetson Dr, Cheyenne, WY, US



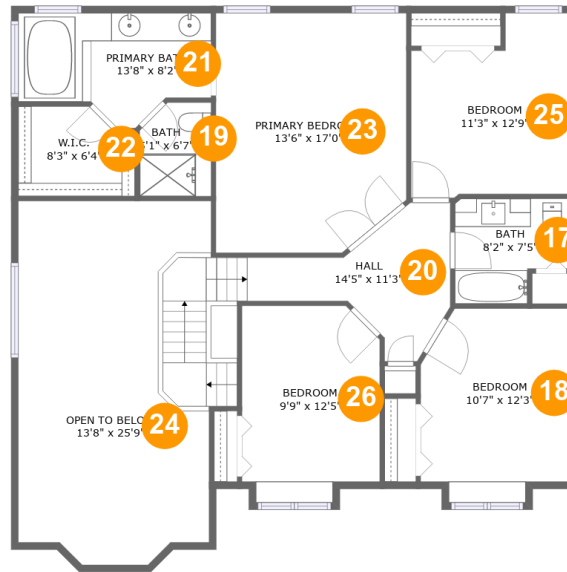
Room dimensions

Floor 2

Total sqft: 2037 Living area: 1251

#		Dimensions	sqft	Counted as living area
6	Living Room	17'7" x 16'4"	290 sq. ft	Yes
7	Utility	6'0" x 9'6"	57 sq. ft	Yes
8	Kitchen	10'0" x 13'4"	131 sq. ft	Yes
9	Hall	6'4" x 3'4"	21 sq. ft	Yes
10	Nook	10'6" x 13'4"	135 sq. ft	Yes
11	Dining Room	11'7" x 10'6"	120 sq. ft	Yes
12	Hall	10'7" x 7'5"	50 sq. ft	Yes
13	Living Room	13'6" x 15'3"	179 sq. ft	Yes
14	Entry	6'3" x 12'5"	124 sq. ft	Yes
15	Bath	5'11" x 4'6"	27 sq. ft	Yes
16	Garage	32'4" x 22'10"	738 sq. ft	No

235 Stetson Dr, Cheyenne, WY, US



Room dimensions

Floor 3

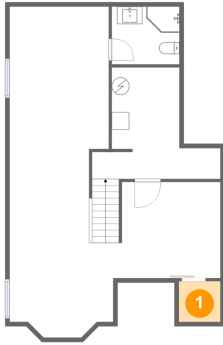
Total sqft: 1461

Living area: 1141

#		Dimensions	sqft	Counted as living area
17	Bath	8'2" x 7'5"	53 sq. ft	Yes
18	Bedroom	10'7" x 12'3"	133 sq. ft	Yes
19	Bath	5'1" x 6'7"	32 sq. ft	Yes
20	Hall	14'5" x 11'3"	146 sq. ft	Yes
21	Bath	13'8" x 8'2"	91 sq. ft	Yes
22	Cl	8'3" x 6'4"	48 sq. ft	Yes
23	Bedroom	13'6" x 17'0"	220 sq. ft	Yes
24	Open To Below	13'8" x 25'9"	298 sq. ft	No
25	Bedroom	11'3" x 12'9"	127 sq. ft	Yes
26	Bedroom	9'9" x 12'5"	127 sq. ft	Yes

235 Stetson Dr, Cheyenne, WY, US

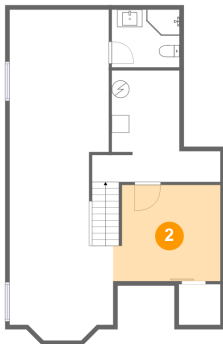
1 Floor 1 - Basement



Dimensions: 4'9" x 4'8"
Area: 22 sq. ft
Counted as living area: No

Heated: No
Finished: No
Enclosed: Yes
Contiguous: Yes
Permitted: Yes
Wet space: No
Addition: No
Conversion: No

2 Floor 1 - Exercise Room

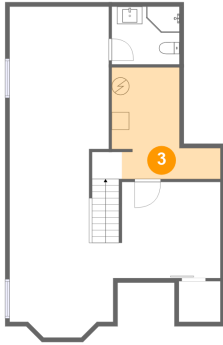


Dimensions: 12'2" x 11'0"
Area: 127 sq. ft
Counted as living area: Yes

Heated: Yes
Finished: Yes
Enclosed: Yes
Contiguous: Yes
Permitted: Yes
Wet space: No
Addition: No
Conversion: No

235 Stetson Dr, Cheyenne, WY, US

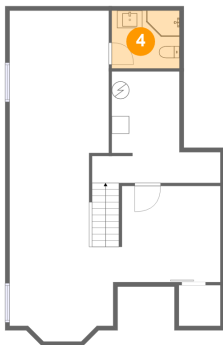
3 Floor 1 - Room



Dimensions: 7'9" x 12'9"
Area: 110 sq. ft
Counted as living area: No

Heated: No
Finished: No
Enclosed: Yes
Contiguous: Yes
Permitted: Yes
Wet space: No
Addition: No
Conversion: No

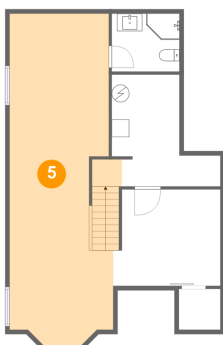
4 Floor 1 - Bath



Dimensions: 7'9" x 6'7"
Area: 51 sq. ft
Counted as living area: Yes

Heated: Yes
Finished: Yes
Enclosed: Yes
Contiguous: Yes
Permitted: Yes
Wet space: Yes
Addition: No
Conversion: No

5 Floor 1 - Recreation Room

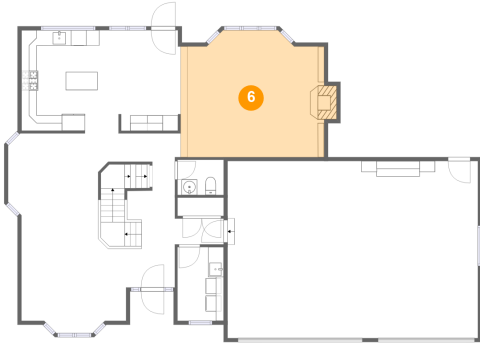


Dimensions: 11'9" x 37'8"
Area: 433 sq. ft
Counted as living area: Yes

Heated: Yes
Finished: Yes
Enclosed: Yes
Contiguous: Yes
Permitted: Yes
Wet space: No
Addition: No
Conversion: No

235 Stetson Dr, Cheyenne, WY, US

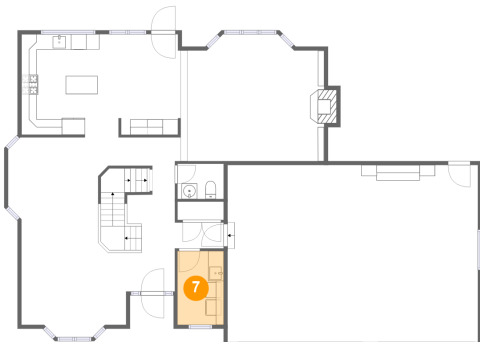
6 Floor 2 - Living Room



Dimensions: 17'7" x 16'4"
Area: 290 sq. ft
Counted as living area: Yes

Heated: Yes
Finished: Yes
Enclosed: Yes
Contiguous: Yes
Permitted: Yes
Wet space: No
Addition: No
Conversion: No

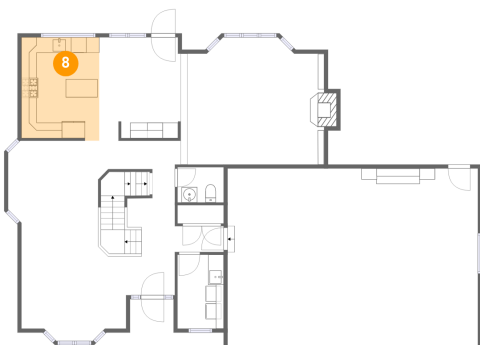
7 Floor 2 - Utility



Dimensions: 6'0" x 9'6"
Area: 57 sq. ft
Counted as living area: Yes

Heated: Yes
Finished: Yes
Enclosed: Yes
Contiguous: Yes
Permitted: Yes
Wet space: No
Addition: No
Conversion: No

8 Floor 2 - Kitchen

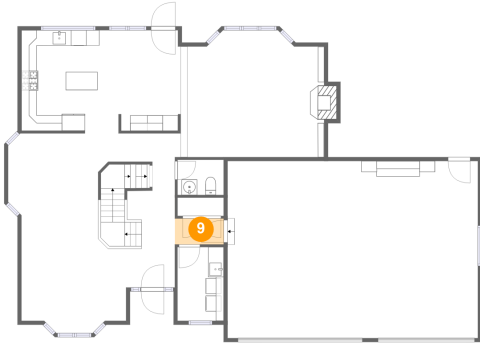


Dimensions: 10'0" x 13'4"
Area: 131 sq. ft
Counted as living area: Yes

Heated: Yes
Finished: Yes
Enclosed: Yes
Contiguous: Yes
Permitted: Yes
Wet space: No
Addition: No
Conversion: No

235 Stetson Dr, Cheyenne, WY, US

9 Floor 2 - Hall



Dimensions: 6'4" x 3'4"
Area: 21 sq. ft
Counted as living area: Yes

Heated: Yes
Finished: Yes
Enclosed: Yes
Contiguous: Yes
Permitted: Yes
Wet space: No
Addition: No
Conversion: No

10 Floor 2 - Nook



Dimensions: 10'6" x 13'4"
Area: 135 sq. ft
Counted as living area: Yes

Heated: Yes
Finished: Yes
Enclosed: Yes
Contiguous: Yes
Permitted: Yes
Wet space: No
Addition: No
Conversion: No

11 Floor 2 - Dining Room

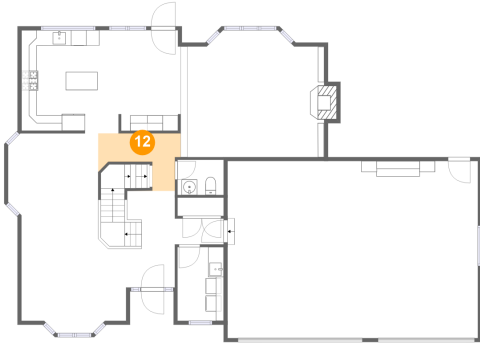


Dimensions: 11'7" x 10'6"
Area: 120 sq. ft
Counted as living area: Yes

Heated: Yes
Finished: Yes
Enclosed: Yes
Contiguous: Yes
Permitted: Yes
Wet space: No
Addition: No
Conversion: No

235 Stetson Dr, Cheyenne, WY, US

12 Floor 2 - Hall



Dimensions: 10'7" x 7'5"
Area: 50 sq. ft
Counted as living area: Yes

Heated: Yes
Finished: Yes
Enclosed: Yes
Contiguous: Yes
Permitted: Yes
Wet space: No
Addition: No
Conversion: No

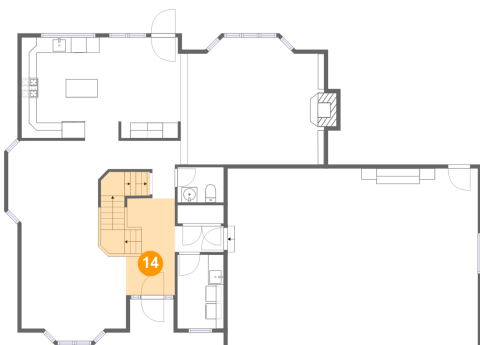
13 Floor 2 - Living Room



Dimensions: 13'6" x 15'3"
Area: 179 sq. ft
Counted as living area: Yes

Heated: Yes
Finished: Yes
Enclosed: Yes
Contiguous: Yes
Permitted: Yes
Wet space: No
Addition: No
Conversion: No

14 Floor 2 - Entry

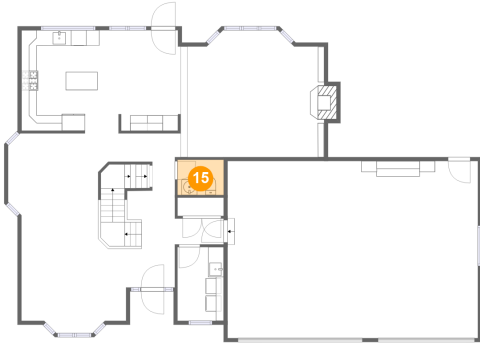


Dimensions: 6'3" x 12'5"
Area: 124 sq. ft
Counted as living area: Yes

Heated: Yes
Finished: Yes
Enclosed: Yes
Contiguous: Yes
Permitted: Yes
Wet space: No
Addition: No
Conversion: No

235 Stetson Dr, Cheyenne, WY, US

15 Floor 2 - Bath



Dimensions: 5'11" x 4'6"
Area: 27 sq. ft
Counted as living area: Yes

Heated: Yes
Finished: Yes
Enclosed: Yes
Contiguous: Yes
Permitted: Yes
Wet space: Yes
Addition: No
Conversion: No

16 Floor 2 - Garage



Dimensions: 32'4" x 22'10"
Area: 738 sq. ft
Counted as living area: No

Heated: No
Finished: No
Enclosed: Yes
Contiguous: Yes
Permitted: Yes
Wet space: No
Addition: No
Conversion: No

17 Floor 3 - Bath

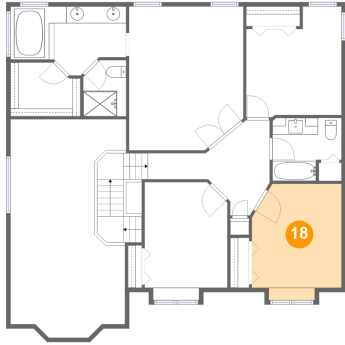


Dimensions: 8'2" x 7'5"
Area: 53 sq. ft
Counted as living area: Yes

Heated: Yes
Finished: Yes
Enclosed: Yes
Contiguous: Yes
Permitted: Yes
Wet space: Yes
Addition: No
Conversion: No

235 Stetson Dr, Cheyenne, WY, US

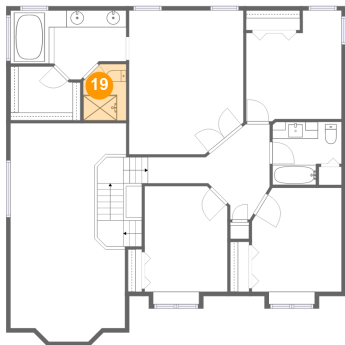
18 Floor 3 - Bedroom



Dimensions: 10'7" x 12'3"
Area: 133 sq. ft
Counted as living area: Yes

Heated: Yes
Finished: Yes
Enclosed: Yes
Contiguous: Yes
Permitted: Yes
Wet space: No
Addition: No
Conversion: No

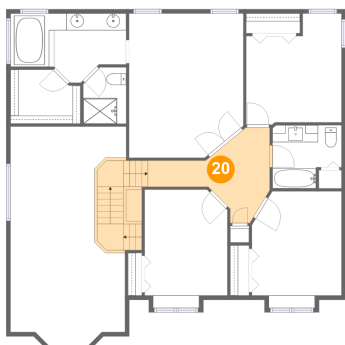
19 Floor 3 - Bath



Dimensions: 5'1" x 6'7"
Area: 32 sq. ft
Counted as living area: Yes

Heated: Yes
Finished: Yes
Enclosed: Yes
Contiguous: Yes
Permitted: Yes
Wet space: Yes
Addition: No
Conversion: No

20 Floor 3 - Hall

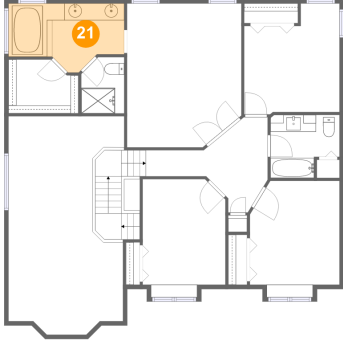


Dimensions: 14'5" x 11'3"
Area: 146 sq. ft
Counted as living area: Yes

Heated: Yes
Finished: Yes
Enclosed: Yes
Contiguous: Yes
Permitted: Yes
Wet space: No
Addition: No
Conversion: No

235 Stetson Dr, Cheyenne, WY, US

21 Floor 3 - Bath



Dimensions: 13'8" x 8'2"
Area: 91 sq. ft
Counted as living area: Yes

Heated: Yes
Finished: Yes
Enclosed: Yes
Contiguous: Yes
Permitted: Yes
Wet space: Yes
Addition: No
Conversion: No

22 Floor 3 - Cl



Dimensions: 8'3" x 6'4"
Area: 48 sq. ft
Counted as living area: Yes

Heated: Yes
Finished: Yes
Enclosed: Yes
Contiguous: Yes
Permitted: Yes
Wet space: No
Addition: No
Conversion: No

23 Floor 3 - Bedroom



Dimensions: 13'6" x 17'0"
Area: 220 sq. ft
Counted as living area: Yes

Heated: Yes
Finished: Yes
Enclosed: Yes
Contiguous: Yes
Permitted: Yes
Wet space: No
Addition: No
Conversion: No

235 Stetson Dr, Cheyenne, WY, US

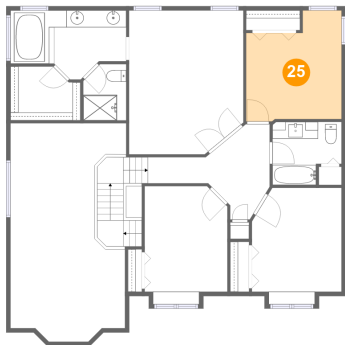
24 Floor 3 - Open To Below



Dimensions: 13'8" x 25'9"
Area: 298 sq. ft
Counted as living area: No

Heated: No
Finished: No
Enclosed: No
Contiguous: Yes
Permitted: No
Wet space: No
Addition: No
Conversion: No

25 Floor 3 - Bedroom



Dimensions: 11'3" x 12'9"
Area: 127 sq. ft
Counted as living area: Yes

Heated: Yes
Finished: Yes
Enclosed: Yes
Contiguous: Yes
Permitted: Yes
Wet space: No
Addition: No
Conversion: No

26 Floor 3 - Bedroom



Dimensions: 9'9" x 12'5"
Area: 127 sq. ft
Counted as living area: Yes

Heated: Yes
Finished: Yes
Enclosed: Yes
Contiguous: Yes
Permitted: Yes
Wet space: No
Addition: No
Conversion: No