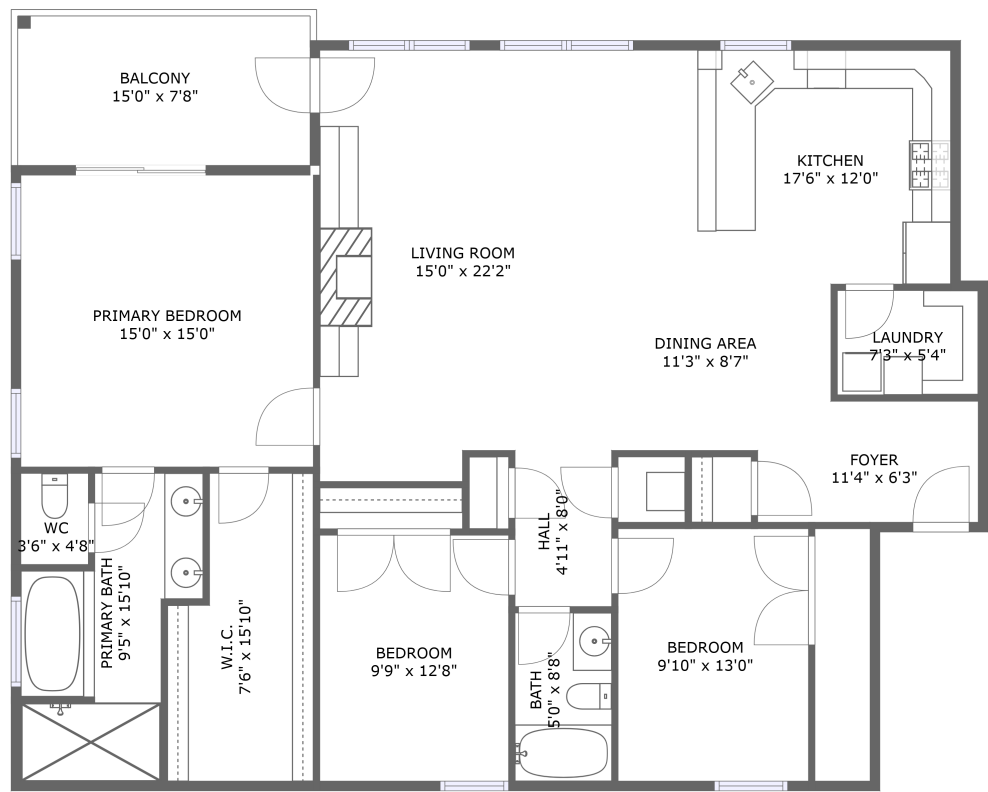



Home report


1215 Jefferson Street, Central Business District, Lynchburg,  
Lynchburg city, Virginia, United States, 24504





FLOOR 1

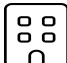
Property summary


 **0** Garages


 **3** Bedrooms

 **2** Bathrooms

 **0** Half baths

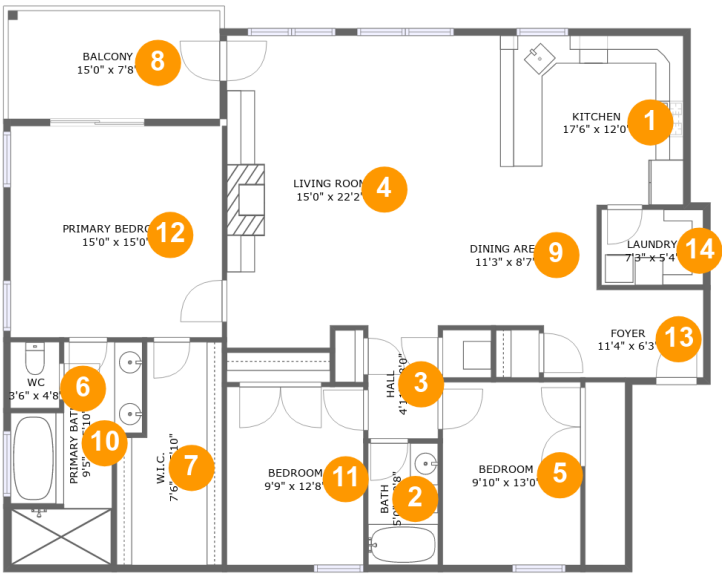
 **1** Floors

 **1,752** Gross living area sqft

 **1,868** Total sqft

Home report

1215 Jefferson Street, Central Business District, Lynchburg,  
Lynchburg city, Virginia, United States, 24504



Room dimensions

Floor 1 Total sqft: 1868    Living area: 1752

| #  |              | Max Dimensions | sqft       | Included |
|----|--------------|----------------|------------|----------|
| 1  | Kitchen      | 17'6" x 12'0"  | 210 sq. ft | Yes      |
| 2  | Bath         | 5'0" x 8'8"    | 43 sq. ft  | Yes      |
| 3  | Hall         | 4'11" x 8'0"   | 40 sq. ft  | Yes      |
| 4  | Living Room  | 15'0" x 22'2"  | 321 sq. ft | Yes      |
| 5  | Bedroom      | 9'10" x 13'0"  | 127 sq. ft | Yes      |
| 6  | WC           | 3'6" x 4'8"    | 16 sq. ft  | Yes      |
| 7  | W.I.C.       | 7'6" x 15'10"  | 104 sq. ft | Yes      |
| 8  | Balcony      | 15'0" x 7'8"   | 116 sq. ft | No       |
| 9  | Dining Area  | 11'3" x 8'7"   | 92 sq. ft  | Yes      |
| 10 | Primary Bath | 9'5" x 15'10"  | 108 sq. ft | Yes      |
| 11 | Bedroom      | 9'9" x 12'8"   | 123 sq. ft | Yes      |

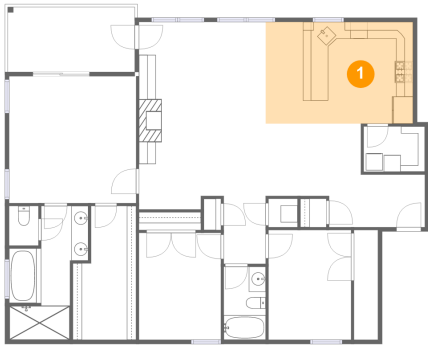
Home report

1215 Jefferson Street, Central Business District, Lynchburg,  
Lynchburg city, Virginia, United States, 24504

| #  |                 | Max Dimensions | sqft       | Included |
|----|-----------------|----------------|------------|----------|
| 12 | Primary Bedroom | 15'0" x 15'0"  | 226 sq. ft | Yes      |
| 13 | Foyer           | 11'4" x 6'3"   | 66 sq. ft  | Yes      |
| 14 | Laundry         | 7'3" x 5'4"    | 39 sq. ft  | Yes      |

1215 Jefferson Street, Central Business District, Lynchburg,  
Lynchburg city, Virginia, United States, 24504

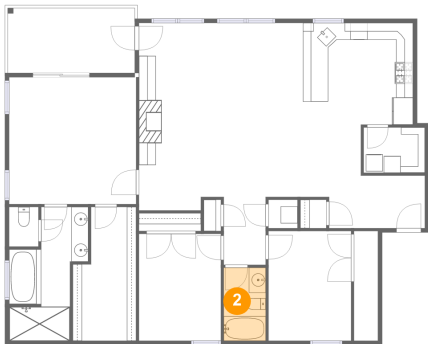
1 Floor 1 - Kitchen



Max Dimensions: 17'6" x 12'0"  
Calculated Area: 210 sq. ft  
Included: Yes

Heated: Yes  
Finished: Yes  
Enclosed: Yes  
Contiguous: Yes  
Permitted: Yes  
Wet space: No  
Addition: No  
Conversion: No

2 Floor 1 - Bath

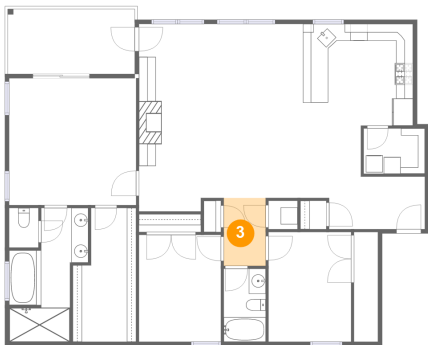


Max Dimensions: 5'0" x 8'8"  
Calculated Area: 43 sq. ft  
Included: Yes

Heated: Yes  
Finished: Yes  
Enclosed: Yes  
Contiguous: Yes  
Permitted: Yes  
Wet space: Yes  
Addition: No  
Conversion: No

1215 Jefferson Street, Central Business District, Lynchburg,  
Lynchburg city, Virginia, United States, 24504

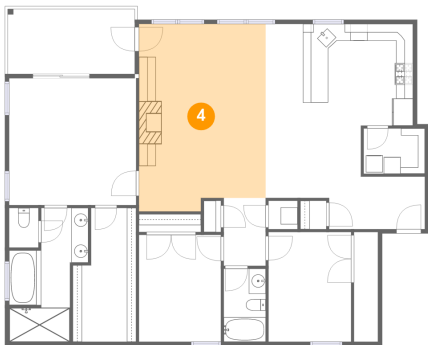
3 Floor 1 - Hall



Max Dimensions: 4'11" x 8'0"  
Calculated Area: 40 sq. ft  
Included: Yes

Heated: Yes  
Finished: Yes  
Enclosed: Yes  
Contiguous: Yes  
Permitted: Yes  
Wet space: No  
Addition: No  
Conversion: No

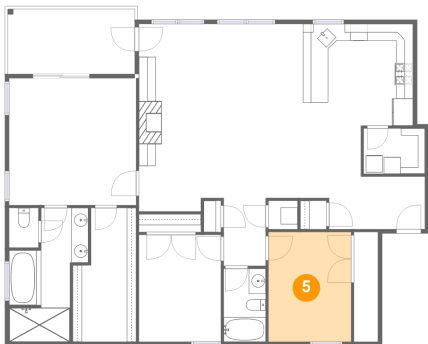
4 Floor 1 - Living Room



Max Dimensions: 15'0" x 22'2"  
Calculated Area: 321 sq. ft  
Included: Yes

Heated: Yes  
Finished: Yes  
Enclosed: Yes  
Contiguous: Yes  
Permitted: Yes  
Wet space: No  
Addition: No  
Conversion: No

5 Floor 1 - Bedroom

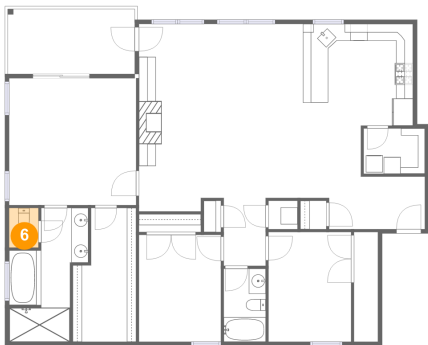


Max Dimensions: 9'10" x 13'0"  
Calculated Area: 127 sq. ft  
Included: Yes

Heated: Yes  
Finished: Yes  
Enclosed: Yes  
Contiguous: Yes  
Permitted: Yes  
Wet space: No  
Addition: No  
Conversion: No

1215 Jefferson Street, Central Business District, Lynchburg,  
Lynchburg city, Virginia, United States, 24504

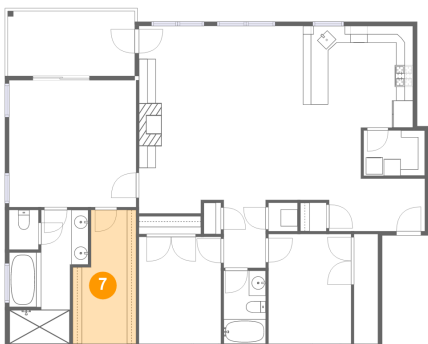
6 Floor 1 - WC



Max Dimensions: 3'6" x 4'8"  
Calculated Area: 16 sq. ft  
Included: Yes

Heated: Yes  
Finished: Yes  
Enclosed: Yes  
Contiguous: Yes  
Permitted: Yes  
Wet space: Yes  
Addition: No  
Conversion: No

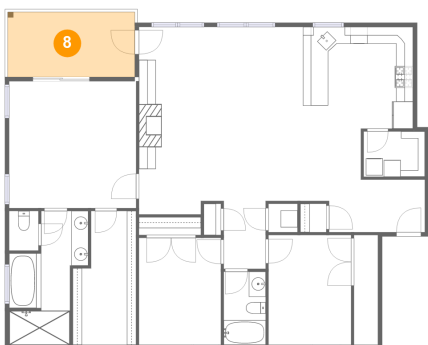
7 Floor 1 - W.I.C.



Max Dimensions: 7'6" x 15'10"  
Calculated Area: 104 sq. ft  
Included: Yes

Heated: Yes  
Finished: Yes  
Enclosed: Yes  
Contiguous: Yes  
Permitted: Yes  
Wet space: No  
Addition: No  
Conversion: No

8 Floor 1 - Balcony

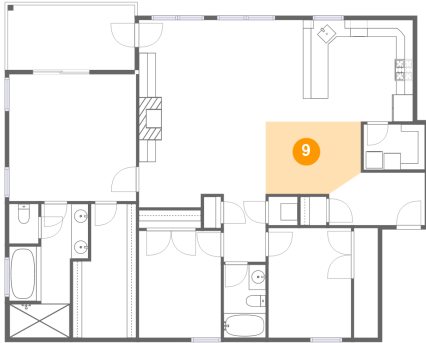


Max Dimensions: 15'0" x 7'8"  
Calculated Area: 116 sq. ft  
Included: No

Heated: No  
Finished: Yes  
Enclosed: No  
Contiguous: Yes  
Permitted: Yes  
Wet space: No  
Addition: No  
Conversion: No

1215 Jefferson Street, Central Business District, Lynchburg,  
Lynchburg city, Virginia, United States, 24504

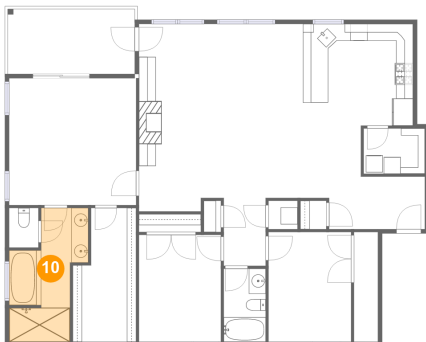
## 9 Floor 1 - Dining Area



Max Dimensions: 11'3" x 8'7"  
Calculated Area: 92 sq. ft  
Included: Yes

Heated: Yes  
Finished: Yes  
Enclosed: Yes  
Contiguous: Yes  
Permitted: Yes  
Wet space: No  
Addition: No  
Conversion: No

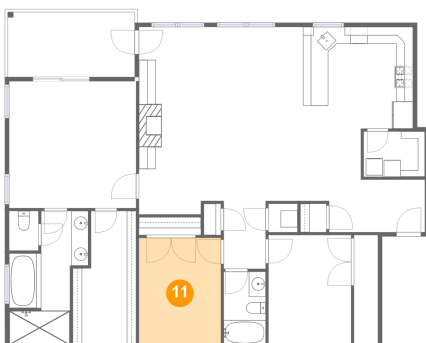
## 10 Floor 1 - Primary Bath



Max Dimensions: 9'5" x 15'10"  
Calculated Area: 108 sq. ft  
Included: Yes

Heated: Yes  
Finished: Yes  
Enclosed: Yes  
Contiguous: Yes  
Permitted: Yes  
Wet space: Yes  
Addition: No  
Conversion: No

## 11 Floor 1 - Bedroom

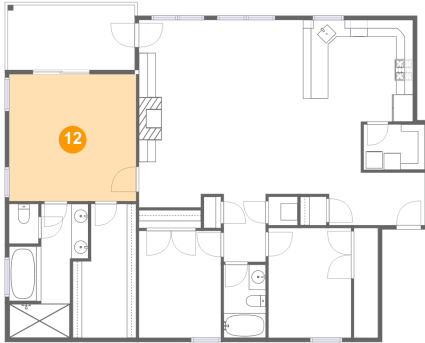


Max Dimensions: 9'9" x 12'8"  
Calculated Area: 123 sq. ft  
Included: Yes

Heated: Yes  
Finished: Yes  
Enclosed: Yes  
Contiguous: Yes  
Permitted: Yes  
Wet space: No  
Addition: No  
Conversion: No

1215 Jefferson Street, Central Business District, Lynchburg,  
Lynchburg city, Virginia, United States, 24504

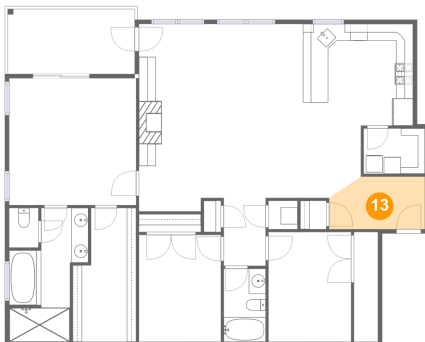
## 12 Floor 1 - Primary Bedroom



Max Dimensions: 15'0" x 15'0"  
Calculated Area: 226 sq. ft  
Included: Yes

Heated: Yes  
Finished: Yes  
Enclosed: Yes  
Contiguous: Yes  
Permitted: Yes  
Wet space: No  
Addition: No  
Conversion: No

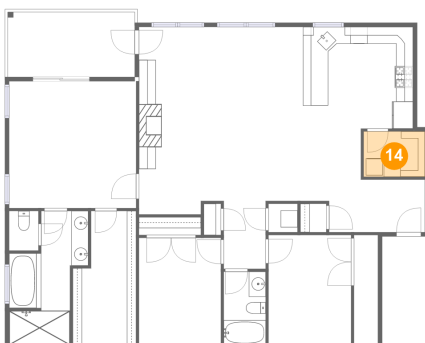
## 13 Floor 1 - Foyer



Max Dimensions: 11'4" x 6'3"  
Calculated Area: 66 sq. ft  
Included: Yes

Heated: Yes  
Finished: Yes  
Enclosed: Yes  
Contiguous: Yes  
Permitted: Yes  
Wet space: No  
Addition: No  
Conversion: No

## 14 Floor 1 - Laundry



Max Dimensions: 7'3" x 5'4"  
Calculated Area: 39 sq. ft  
Included: Yes

Heated: Yes  
Finished: Yes  
Enclosed: Yes  
Contiguous: Yes  
Permitted: Yes  
Wet space: No  
Addition: No  
Conversion: No