

Home data report

6304 Meadow Creek Drive, Reno, Washoe County, Nevada,
United States, 89519



Total Area: 1732 sq. ft

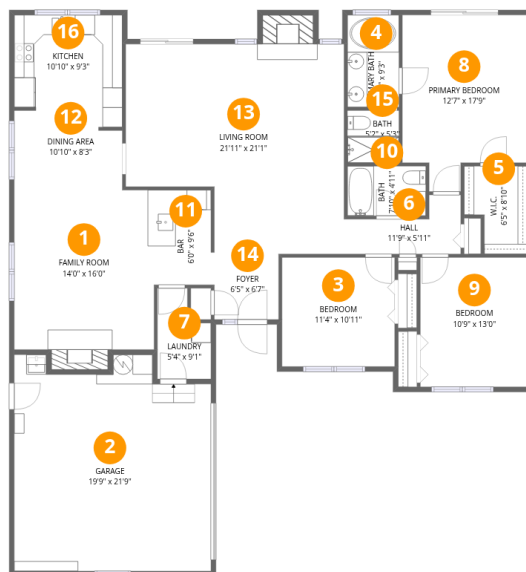
1st Floor: 1732 sq. ft

Excluded: Garage 398 sq. ft, Fireplace 32 sq. ft, Walls: 122 sq. ft

Property summary



**6304 Meadow Creek Drive, Reno, Washoe County, Nevada,
United States, 89519**



Room dimensions

Floor 1

Total:1732sqft Excluded: 430sqft

| # | | Dimensions | sqft | Counted as living area |
|----|-----------------|----------------|------------|------------------------|
| 1 | Family Room | 14'0" x 16'0" | 224 sq. ft | Yes |
| 2 | Garage | 19'9" x 21'9" | 429 sq. ft | No |
| 3 | Bedroom | 11'4" x 10'11" | 124 sq. ft | Yes |
| 4 | Primary Bath | 5'2" x 9'3" | 48 sq. ft | Yes |
| 5 | W.I.C. | 6'5" x 8'10" | 56 sq. ft | Yes |
| 6 | Hall | 11'9" x 5'11" | 69 sq. ft | Yes |
| 7 | Laundry | 5'4" x 9'1" | 49 sq. ft | Yes |
| 8 | Primary Bedroom | 12'7" x 17'9" | 223 sq. ft | Yes |
| 9 | Bedroom | 10'9" x 13'0" | 140 sq. ft | Yes |
| 10 | Bath | 7'10" x 4'11" | 39 sq. ft | Yes |
| 11 | Bar | 6'0" x 9'6" | 57 sq. ft | Yes |

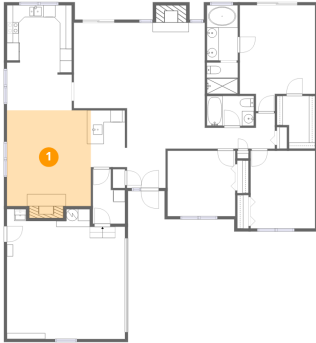
Home data report

**6304 Meadow Creek Drive, Reno, Washoe County, Nevada,
United States, 89519**

| # | | Dimensions | sqft | Counted as living area |
|----|-------------|----------------|------------|------------------------|
| 12 | Dining Area | 10'10" x 8'3" | 90 sq. ft | Yes |
| 13 | Living Room | 21'11" x 21'1" | 461 sq. ft | Yes |
| 14 | Foyer | 6'5" x 6'7" | 42 sq. ft | Yes |
| 15 | Bath | 5'2" x 5'3" | 27 sq. ft | Yes |
| 16 | Kitchen | 10'10" x 9'3" | 100 sq. ft | Yes |

**6304 Meadow Creek Drive, Reno, Washoe County, Nevada,
United States, 89519**

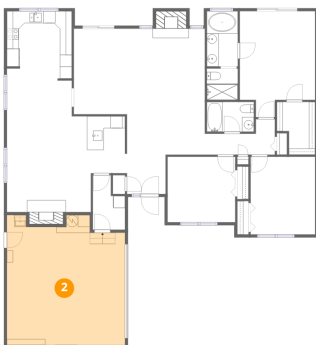
1 Floor 1 - Family Room



Dimensions: 14'0" x 16'0"
Area: 224 sq. ft
Counted as living area: Yes

Heated: Yes
Finished: Yes
Enclosed: Yes
Contiguous: Yes
Permitted: Yes
Wet space: No
Addition: No
Conversion: No

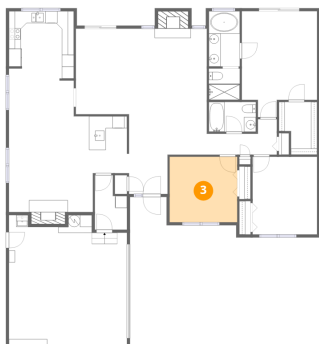
2 Floor 1 - Garage



Dimensions: 19'9" x 21'9"
Area: 429 sq. ft
Counted as living area: No

Heated: No
Finished: No
Enclosed: Yes
Contiguous: Yes
Permitted: Yes
Wet space: No
Addition: No
Conversion: No

3 Floor 1 - Bedroom



Dimensions: 11'4" x 10'11"
Area: 124 sq. ft
Counted as living area: Yes

Heated: Yes
Finished: Yes
Enclosed: Yes
Contiguous: Yes
Permitted: Yes
Wet space: No
Addition: No
Conversion: No

4 Floor 1 - Primary Bath



Dimensions: 5'2" x 9'3"
Area: 48 sq. ft
Counted as living area: Yes

Heated: Yes
Finished: Yes
Enclosed: Yes
Contiguous: Yes
Permitted: Yes
Wet space: Yes
Addition: No
Conversion: No

5 Floor 1 - W.I.C.

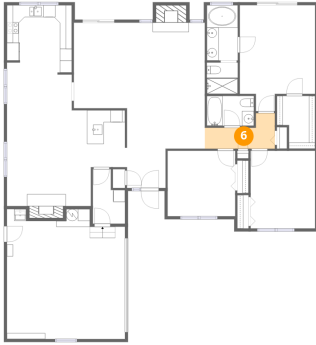


Dimensions: 6'5" x 8'10"
Area: 56 sq. ft
Counted as living area: Yes

Heated: Yes
Finished: Yes
Enclosed: Yes
Contiguous: Yes
Permitted: Yes
Wet space: No
Addition: No
Conversion: No

6304 Meadow Creek Drive, Reno, Washoe County, Nevada,
United States, 89519

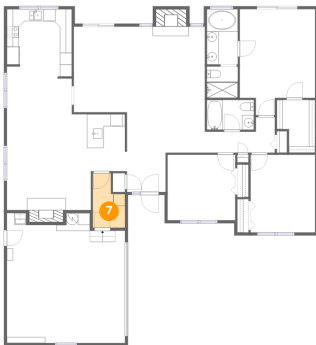
6 Floor 1 - Hall



Dimensions: 11'9" x 5'11"
Area: 69 sq. ft
Counted as living area: Yes

Heated: Yes
Finished: Yes
Enclosed: Yes
Contiguous: Yes
Permitted: Yes
Wet space: No
Addition: No
Conversion: No

7 Floor 1 - Laundry



Dimensions: 5'4" x 9'1"
Area: 49 sq. ft
Counted as living area: Yes

Heated: Yes
Finished: Yes
Enclosed: Yes
Contiguous: Yes
Permitted: Yes
Wet space: No
Addition: No
Conversion: No

8 Floor 1 - Primary Bedroom

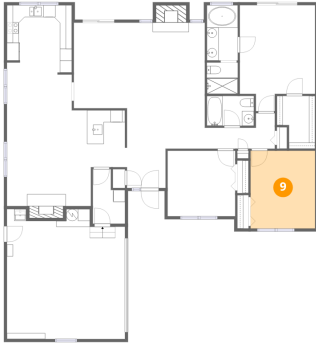


Dimensions: 12'7" x 17'9"
Area: 223 sq. ft
Counted as living area: Yes

Heated: Yes
Finished: Yes
Enclosed: Yes
Contiguous: Yes
Permitted: Yes
Wet space: No
Addition: No
Conversion: No

6304 Meadow Creek Drive, Reno, Washoe County, Nevada,
United States, 89519

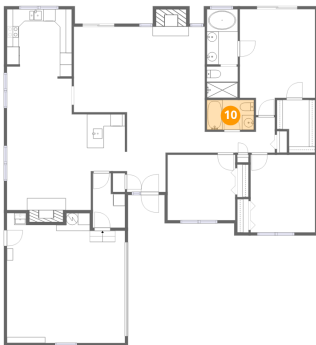
9 Floor 1 - Bedroom



Dimensions: 10'9" x 13'0"
Area: 140 sq. ft
Counted as living area: Yes

Heated: Yes
Finished: Yes
Enclosed: Yes
Contiguous: Yes
Permitted: Yes
Wet space: No
Addition: No
Conversion: No

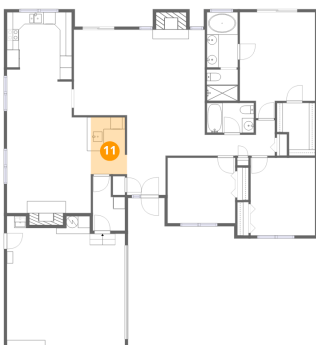
10 Floor 1 - Bath



Dimensions: 7'10" x 4'11"
Area: 39 sq. ft
Counted as living area: Yes

Heated: Yes
Finished: Yes
Enclosed: Yes
Contiguous: Yes
Permitted: Yes
Wet space: Yes
Addition: No
Conversion: No

11 Floor 1 - Bar

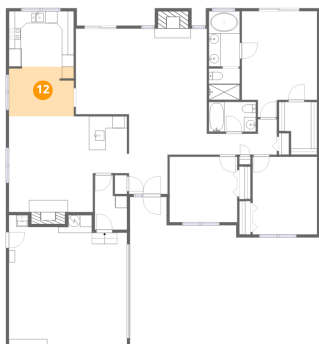


Dimensions: 6'0" x 9'6"
Area: 57 sq. ft
Counted as living area: Yes

Heated: Yes
Finished: Yes
Enclosed: Yes
Contiguous: Yes
Permitted: Yes
Wet space: No
Addition: No
Conversion: No

6304 Meadow Creek Drive, Reno, Washoe County, Nevada,
United States, 89519

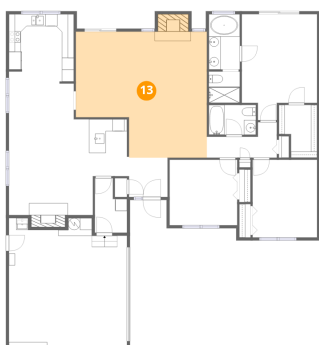
12 Floor 1 - Dining Area



Dimensions: 10'10" x 8'3"
Area: 90 sq. ft
Counted as living area: Yes

Heated: Yes
Finished: Yes
Enclosed: Yes
Contiguous: Yes
Permitted: Yes
Wet space: No
Addition: No
Conversion: No

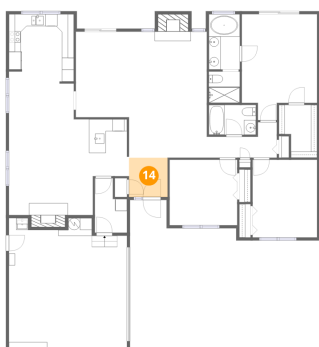
13 Floor 1 - Living Room



Dimensions: 21'11" x 21'1"
Area: 461 sq. ft
Counted as living area: Yes

Heated: Yes
Finished: Yes
Enclosed: Yes
Contiguous: Yes
Permitted: Yes
Wet space: No
Addition: No
Conversion: No

14 Floor 1 - Foyer



Dimensions: 6'5" x 6'7"
Area: 42 sq. ft
Counted as living area: Yes

Heated: Yes
Finished: Yes
Enclosed: Yes
Contiguous: Yes
Permitted: Yes
Wet space: No
Addition: No
Conversion: No

6304 Meadow Creek Drive, Reno, Washoe County, Nevada,
United States, 89519

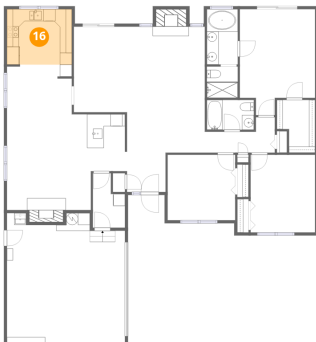
15 Floor 1 - Bath



Dimensions: 5'2" x 5'3"
Area: 27 sq. ft
Counted as living area: Yes

Heated: Yes
Finished: Yes
Enclosed: Yes
Contiguous: Yes
Permitted: Yes
Wet space: Yes
Addition: No
Conversion: No

16 Floor 1 - Kitchen



Dimensions: 10'10" x 9'3"
Area: 100 sq. ft
Counted as living area: Yes

Heated: Yes
Finished: Yes
Enclosed: Yes
Contiguous: Yes
Permitted: Yes
Wet space: No
Addition: No
Conversion: No