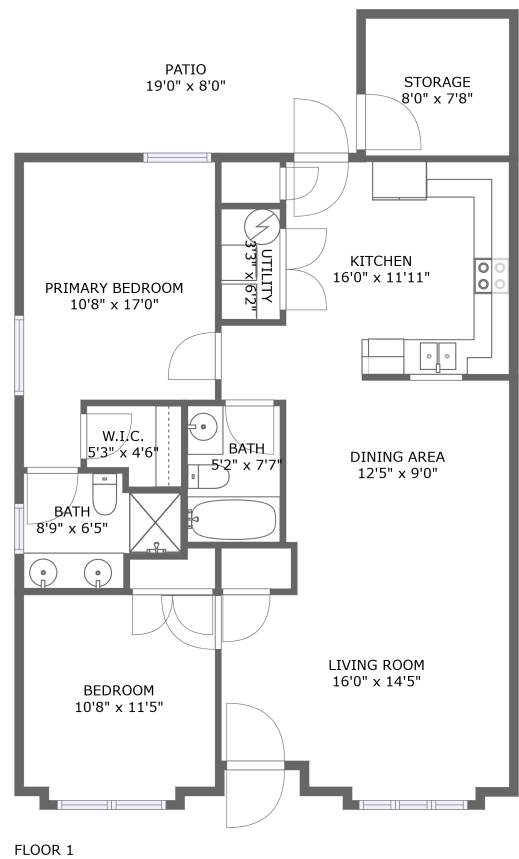



Home report


8212 Emerald Court Drive,Roanoke,Virginia,United States




Property summary




0  
Garages



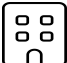
2  
Bedrooms




2  
Bathrooms




0  
Half baths



1  
Floors



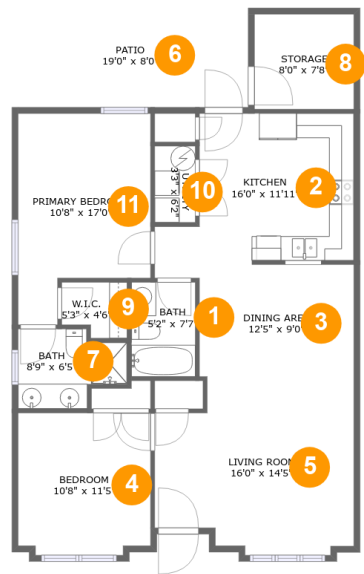
1,008  
Gross living  
area sqft



1,233  
Total sqft

Home report

8212 Emerald Court Drive,Roanoke,Virginia,United States



Room dimensions

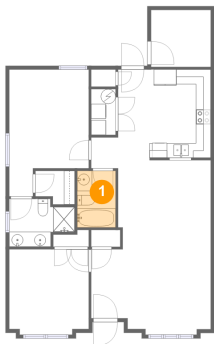
Floor 1

Total sqft: 1233

Living area: 1008

#		Dimensions	sqft	Counted as living area
1	Bath	5'2" x 7'7"	39 sq. ft	Yes
2	Kitchen	16'0" x 11'11"	166 sq. ft	Yes
3	Dining Area	12'5" x 9'0"	112 sq. ft	Yes
4	Bedroom	10'8" x 11'5"	119 sq. ft	Yes
5	Living Room	16'0" x 14'5"	204 sq. ft	Yes
6	Patio	19'0" x 8'0"	152 sq. ft	No
7	Bath	8'9" x 6'5"	47 sq. ft	Yes
8	Storage	8'0" x 7'8"	61 sq. ft	No
9	W.I.C.	5'3" x 4'6"	21 sq. ft	Yes
10	Utility	3'3" x 6'2"	20 sq. ft	Yes
11	Primary Bedroom	10'8" x 17'0"	153 sq. ft	Yes

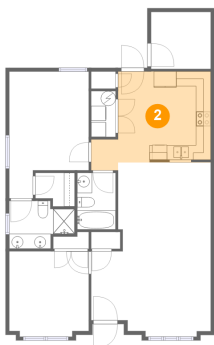
1 Floor 1 - Bath



Dimensions: 5'2" x 7'7"  
Area: 39 sq. ft  
Counted as living area: Yes

Heated: Yes  
Finished: Yes  
Enclosed: Yes  
Contiguous: Yes  
Permitted: Yes  
Wet space: Yes  
Addition: No  
Conversion: No

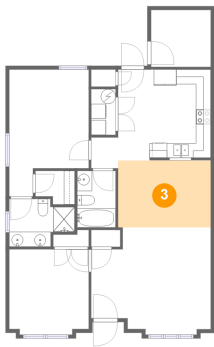
2 Floor 1 - Kitchen



Dimensions: 16'0" x 11'11"  
Area: 166 sq. ft  
Counted as living area: Yes

Heated: Yes  
Finished: Yes  
Enclosed: Yes  
Contiguous: Yes  
Permitted: Yes  
Wet space: No  
Addition: No  
Conversion: No

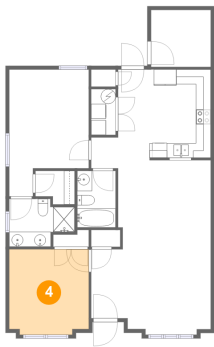
3 Floor 1 - Dining Area



Dimensions: 12'5" x 9'0"  
Area: 112 sq. ft  
Counted as living area: Yes

Heated: Yes  
Finished: Yes  
Enclosed: Yes  
Contiguous: Yes  
Permitted: Yes  
Wet space: No  
Addition: No  
Conversion: No

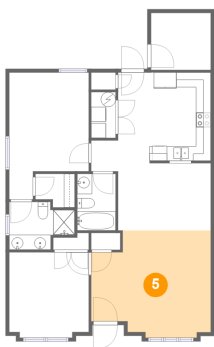
4 Floor 1 - Bedroom



Dimensions: 10'8" x 11'5"  
Area: 119 sq. ft  
Counted as living area: Yes

Heated: Yes  
Finished: Yes  
Enclosed: Yes  
Contiguous: Yes  
Permitted: Yes  
Wet space: No  
Addition: No  
Conversion: No

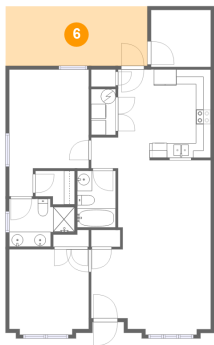
5 Floor 1 - Living Room



Dimensions: 16'0" x 14'5"  
Area: 204 sq. ft  
Counted as living area: Yes

Heated: Yes  
Finished: Yes  
Enclosed: Yes  
Contiguous: Yes  
Permitted: Yes  
Wet space: No  
Addition: No  
Conversion: No

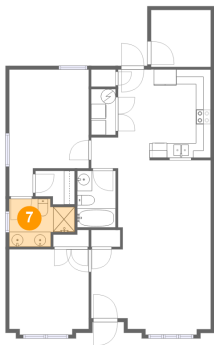
6 Floor 1 - Patio



Dimensions: 19'0" x 8'0"  
Area: 152 sq. ft  
Counted as living area: No

Heated: No  
Finished: Yes  
Enclosed: No  
Contiguous: Yes  
Permitted: Yes  
Wet space: No  
Addition: No  
Conversion: No

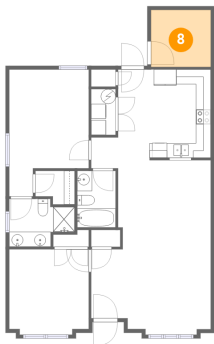
7 Floor 1 - Bath



Dimensions: 8'9" x 6'5"  
Area: 47 sq. ft  
Counted as living area: Yes

Heated: Yes  
Finished: Yes  
Enclosed: Yes  
Contiguous: Yes  
Permitted: Yes  
Wet space: Yes  
Addition: No  
Conversion: No

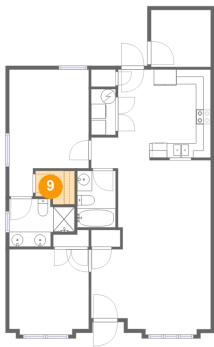
8 Floor 1 - Storage



Dimensions: 8'0" x 7'8"  
Area: 61 sq. ft  
Counted as living area: No

Heated: No  
Finished: No  
Enclosed: No  
Contiguous: Yes  
Permitted: Yes  
Wet space: No  
Addition: No  
Conversion: No

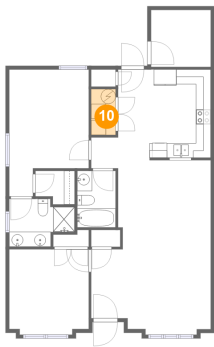
9 Floor 1 - W.I.C.



Dimensions: 5'3" x 4'6"  
Area: 21 sq. ft  
Counted as living area: Yes

Heated: Yes  
Finished: Yes  
Enclosed: Yes  
Contiguous: Yes  
Permitted: Yes  
Wet space: No  
Addition: No  
Conversion: No

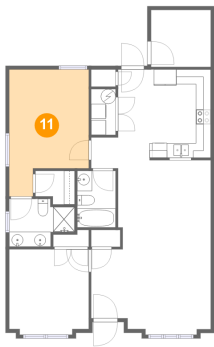
10 Floor 1 - Utility



Dimensions: 3'3" x 6'2"  
Area: 20 sq. ft  
Counted as living area: Yes

Heated: Yes  
Finished: Yes  
Enclosed: Yes  
Contiguous: Yes  
Permitted: Yes  
Wet space: No  
Addition: No  
Conversion: No

11 Floor 1 - Primary Bedroom



Dimensions: 10'8" x 17'0"  
Area: 153 sq. ft  
Counted as living area: Yes

Heated: Yes  
Finished: Yes  
Enclosed: Yes  
Contiguous: Yes  
Permitted: Yes  
Wet space: No  
Addition: No  
Conversion: No