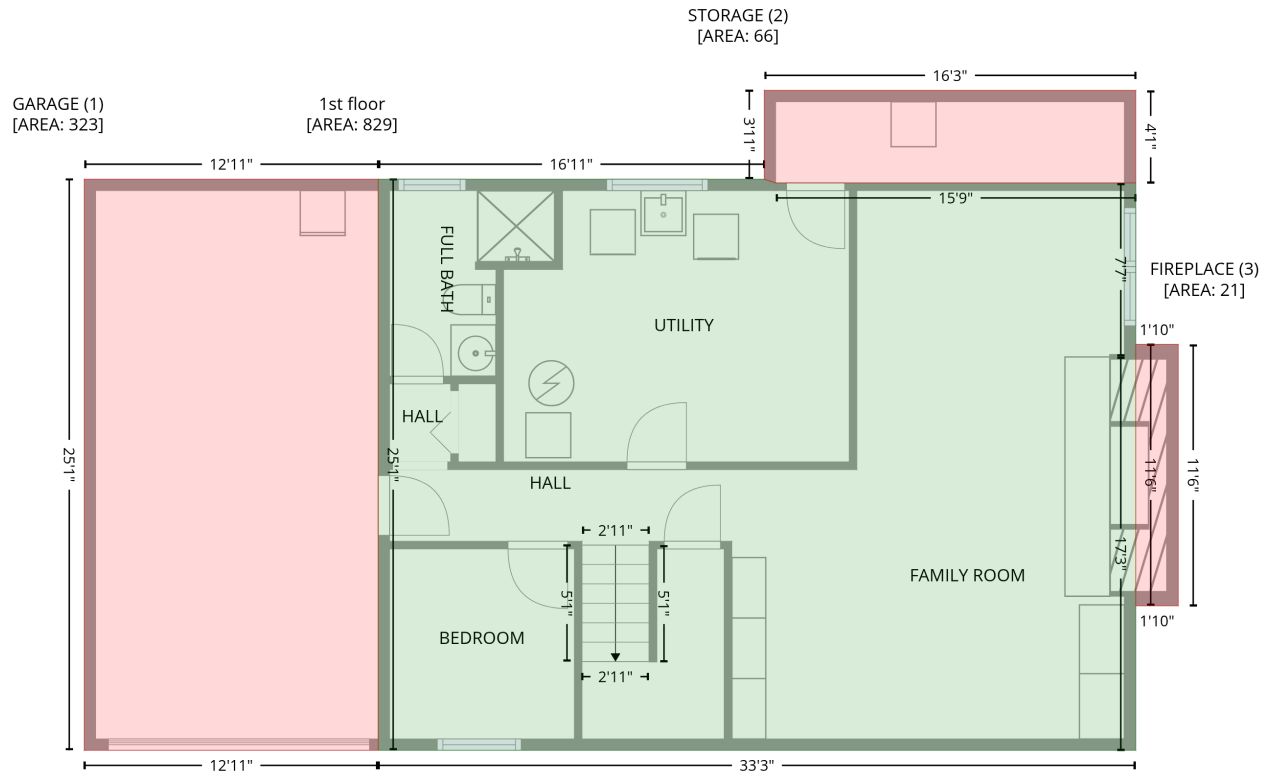


72 Eastbury Drive, Stoney Creek, Ontario L8E 2V5, Canada

Gross Living Area: 1984 sq. ft

Level 1



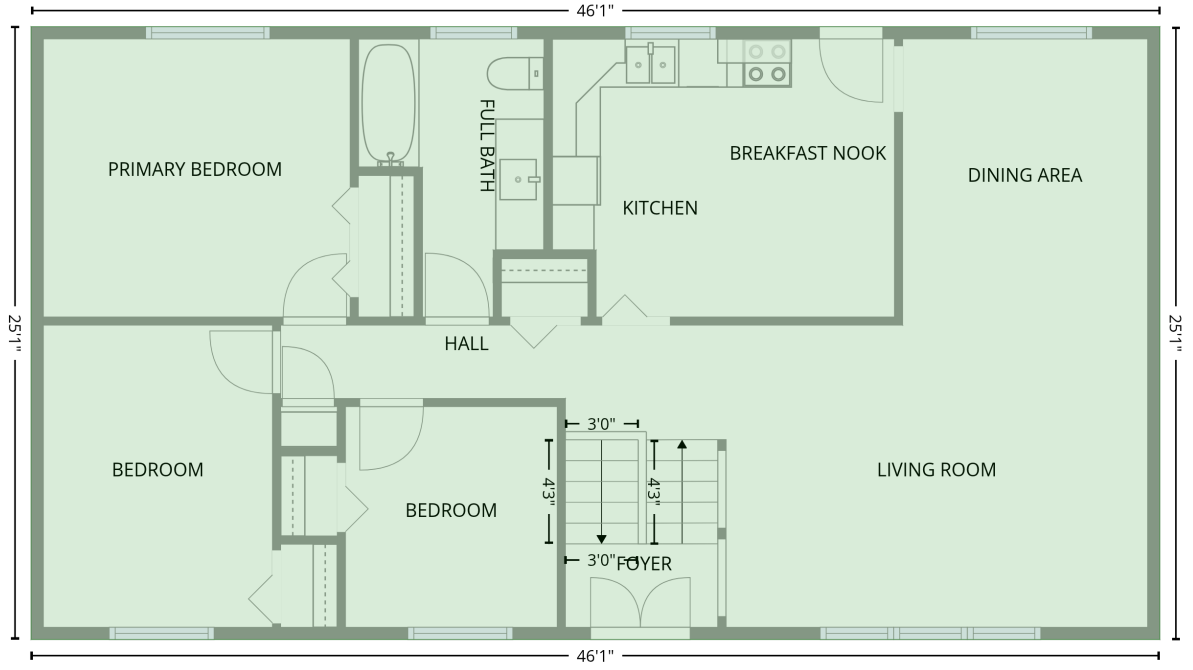
Space	Area (sq. ft)	Calculation
1st floor (Living area)	829	$-\left((278.9 + 284.9) * (153.9 - 155.9) + (284.9 + 474.4) * (155.9 - 155.9) + (474.4 + 474.4) * (155.9 - 246.7) + (474.4 + 474.4) * (246.7 - 247.2) + (474.4 + 474.4) * (247.2 - 454.4) + (474.4 + 75.7) * (454.4 - 454.4) + (75.7 + 75.7) * (454.4 - 153.9) + (75.7 + 278.9) * (153.9 - 153.9)\right) * 0.5 * 0.00694$
GARAGE (Non-living area)	323	$-\left((75.7 + 75.7) * (153.9 - 454.4) + (75.7 + -79) * (454.4 - 454.4) + (-79 + -79) * (454.4 - 153.9) + (-79 + 75.7) * (153.9 - 153.9)\right) * 0.5 * 0.00694$
STORAGE (Non-living area)	66	$-\left((474.4 + 474.4) * (107.1 - 155.9) + (474.4 + 284.9) * (155.9 - 155.9) + (284.9 + 278.9) * (155.9 - 153.9) + (278.9 + 278.9) * (153.9 - 107.1) + (278.9 + 474.4) * (107.1 - 107.1)\right) * 0.5 * 0.00694$
FIREPLACE (Non-living area)	21	$-\left((496.8 + 496.8) * (240.7 - 378.3) + (496.8 + 474.4) * (378.3 - 378.3) + (474.4 + 474.4) * (378.3 - 240.7) + (474.4 + 496.8) * (240.7 - 240.7)\right) * 0.5 * 0.00694$

72 Eastbury Drive, Stoney Creek, Ontario L8E 2V5, Canada

Gross Living Area: 1984 sq. ft

Level 2

2nd floor
[AREA: 1155]



Space	Area (sq. ft)	Calculation <small>Coordinate Polygon Area Algorithm using inches</small>
2nd floor (Living area)	1155	$-((474.4 + 474.4) * (153.9 - 454.4) + (474.4 + -79) * (454.4 - 454.4) + (-79 + -79) * (454.4 - 153.9) + (-79 + 474.4) * (153.9 - 153.9)) * 0.5 * 0.00694$