

Home report

6780 Auburn Hills Drive, Highland Meadows Golf Course,
Windsor, Larimer County, Colorado, United States, 80550



Total Area: 2404 sq. ft

Below Ground: 791 sq. ft, Floor 2: 1613 sq. ft

Excluded: Utility 433 sq. ft, Storage 249 sq. ft, Garage 535 sq. ft, Porch 36 sq. ft, Patio 195 sq. ft, Walls: 232 sq. ft

Property summary



2 Floors



3 Bedrooms



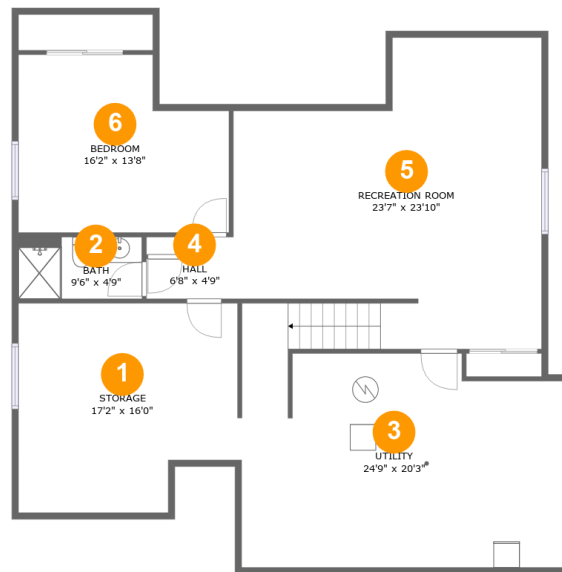
3 Bathrooms



1 Garages

Home report

6780 Auburn Hills Drive, Highland Meadows Golf Course,
Windsor, Larimer County, Colorado, United States, 80550



Room dimensions

Floor 1 Below ground

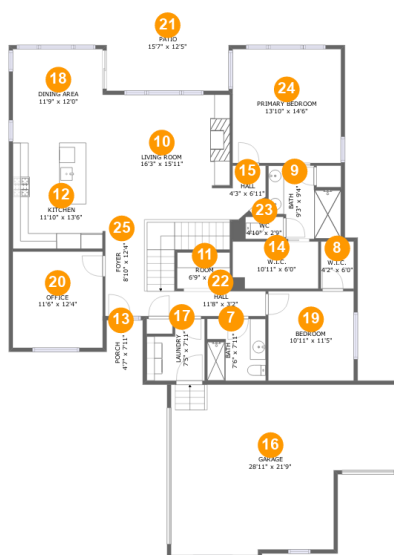
Total:791sqft

Excluded: 682sqft

#		Max Dimensions	sqft	Included
1	Storage	17'2" x 16'0"	250 sq. ft	No
2	Bath	9'6" x 4'9"	45 sq. ft	Yes
3	Utility	24'9" x 20'3"	426 sq. ft	No
4	Hall	6'8" x 4'9"	26 sq. ft	Yes
5	Recreation Room	23'7" x 23'10"	451 sq. ft	Yes
6	Bedroom	16'2" x 13'8"	195 sq. ft	Yes

Home report

6780 Auburn Hills Drive, Highland Meadows Golf Course,
Windsor, Larimer County, Colorado, United States, 80550



Room dimensions

Floor 2

Total:1613sqft

Excluded: 766sqft

#		Max Dimensions	sqft	Included
7	Bath	7'6" x 7'11"	58 sq. ft	Yes
8	W.I.C.	4'2" x 6'0"	25 sq. ft	Yes
9	Bath	9'3" x 9'4"	69 sq. ft	Yes
10	Living Room	16'3" x 15'11"	255 sq. ft	Yes
11	Room	6'9" x 4'8"	32 sq. ft	Yes
12	Kitchen	11'10" x 13'6"	159 sq. ft	Yes
13	Porch	4'7" x 7'11"	36 sq. ft	No
14	W.I.C.	10'11" x 6'0"	66 sq. ft	Yes
15	Hall	4'3" x 6'11"	27 sq. ft	Yes
16	Garage	28'11" x 21'9"	535 sq. ft	No
17	Laundry	7'5" x 7'11"	50 sq. ft	Yes

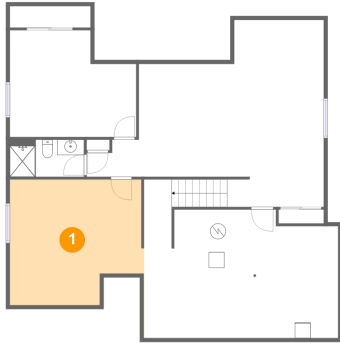
Home report

**6780 Auburn Hills Drive, Highland Meadows Golf Course,
Windsor, Larimer County, Colorado, United States, 80550**

#		Max Dimensions	sqft	Included
18	Dining Area	11'9" x 12'0"	140 sq. ft	Yes
19	Bedroom	10'11" x 11'5"	125 sq. ft	Yes
20	Office	11'6" x 12'4"	141 sq. ft	Yes
21	Patio	15'7" x 12'5"	195 sq. ft	No
22	Hall	11'8" x 3'2"	37 sq. ft	Yes
23	WC	4'10" x 2'9"	17 sq. ft	Yes
24	Primary Bedroom	13'10" x 14'6"	202 sq. ft	Yes
25	Foyer	8'10" x 12'4"	136 sq. ft	Yes

6780 Auburn Hills Drive, Highland Meadows Golf Course,
Windsor, Larimer County, Colorado, United States, 80550

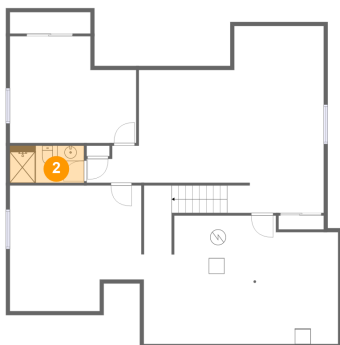
1 Floor 1 - Storage



Max Dimensions: 17'2" x 16'0"
Calculated Area: 250 sq. ft
Included: No

Heated: No
Finished: No
Enclosed: No
Contiguous: Yes
Permitted: Yes
Wet space: No
Addition: No
Conversion: No

2 Floor 1 - Bath

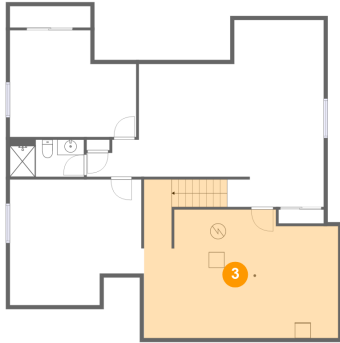


Max Dimensions: 9'6" x 4'9"
Calculated Area: 45 sq. ft
Included: Yes

Heated: Yes
Finished: Yes
Enclosed: Yes
Contiguous: Yes
Permitted: Yes
Wet space: Yes
Addition: No
Conversion: No

6780 Auburn Hills Drive, Highland Meadows Golf Course,
Windsor, Larimer County, Colorado, United States, 80550

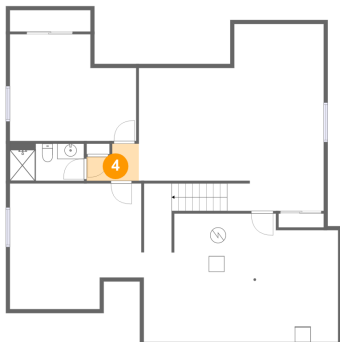
3 Floor 1 - Utility



Max Dimensions: 24'9" x 20'3"
Calculated Area: 426 sq. ft
Included: No

Heated: Yes
Finished: No
Enclosed: Yes
Contiguous: Yes
Permitted: Yes
Wet space: No
Addition: No
Conversion: No

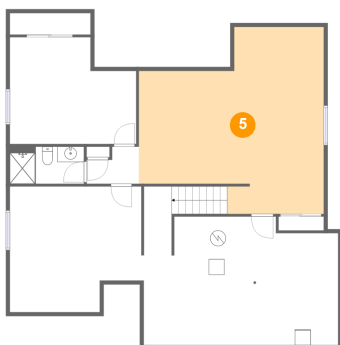
4 Floor 1 - Hall



Max Dimensions: 6'8" x 4'9"
Calculated Area: 26 sq. ft
Included: Yes

Heated: Yes
Finished: Yes
Enclosed: Yes
Contiguous: Yes
Permitted: Yes
Wet space: No
Addition: No
Conversion: No

5 Floor 1 - Recreation Room

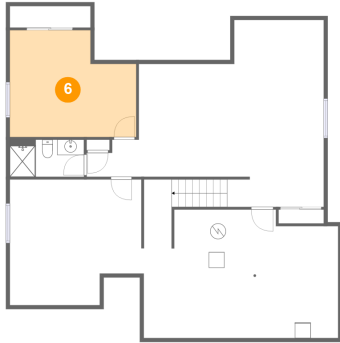


Max Dimensions: 23'7" x 23'10"
Calculated Area: 451 sq. ft
Included: Yes

Heated: Yes
Finished: Yes
Enclosed: Yes
Contiguous: Yes
Permitted: Yes
Wet space: No
Addition: No
Conversion: No

6780 Auburn Hills Drive, Highland Meadows Golf Course,
Windsor, Larimer County, Colorado, United States, 80550

6 Floor 1 - Bedroom



Max Dimensions: 16'2" x 13'8"
Calculated Area: 195 sq. ft
Included: Yes

Heated: Yes
Finished: Yes
Enclosed: Yes
Contiguous: Yes
Permitted: Yes
Wet space: No
Addition: No
Conversion: No

7 Floor 2 - Bath



Max Dimensions: 7'6" x 7'11"
Calculated Area: 58 sq. ft
Included: Yes

Heated: Yes
Finished: Yes
Enclosed: Yes
Contiguous: Yes
Permitted: Yes
Wet space: Yes
Addition: No
Conversion: No

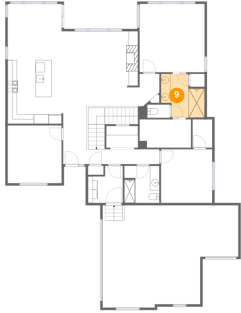
8 Floor 2 - W.I.C.



Max Dimensions: 4'2" x 6'0"
Calculated Area: 25 sq. ft
Included: Yes

Heated: Yes
Finished: Yes
Enclosed: Yes
Contiguous: Yes
Permitted: Yes
Wet space: No
Addition: No
Conversion: No

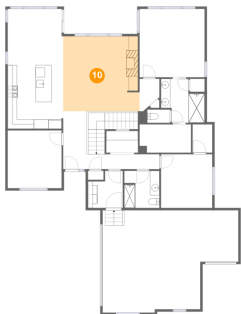
9 Floor 2 - Bath



Max Dimensions: 9'3" x 9'4"
Calculated Area: 69 sq. ft
Included: Yes

Heated: Yes
Finished: Yes
Enclosed: Yes
Contiguous: Yes
Permitted: Yes
Wet space: Yes
Addition: No
Conversion: No

10 Floor 2 - Living Room



Max Dimensions: 16'3" x 15'11"
Calculated Area: 255 sq. ft
Included: Yes

Heated: Yes
Finished: Yes
Enclosed: Yes
Contiguous: Yes
Permitted: Yes
Wet space: No
Addition: No
Conversion: No

11 Floor 2 - Room

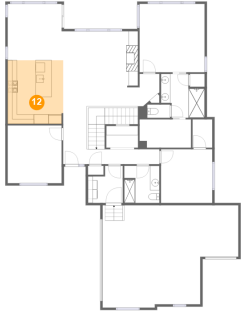


Max Dimensions: 6'9" x 4'8"
Calculated Area: 32 sq. ft
Included: Yes

Heated: Yes
Finished: Yes
Enclosed: Yes
Contiguous: Yes
Permitted: Yes
Wet space: No
Addition: No
Conversion: No

6780 Auburn Hills Drive, Highland Meadows Golf Course,
Windsor, Larimer County, Colorado, United States, 80550

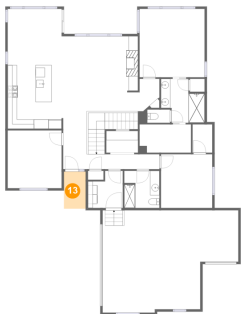
12 Floor 2 - Kitchen



Max Dimensions: 11'10" x 13'6"
Calculated Area: 159 sq. ft
Included: Yes

Heated: Yes
Finished: Yes
Enclosed: Yes
Contiguous: Yes
Permitted: Yes
Wet space: No
Addition: No
Conversion: No

13 Floor 2 - Porch



Max Dimensions: 4'7" x 7'11"
Calculated Area: 36 sq. ft
Included: No

Heated: No
Finished: Yes
Enclosed: No
Contiguous: Yes
Permitted: Yes
Wet space: No
Addition: No
Conversion: No

14 Floor 2 - W.I.C.

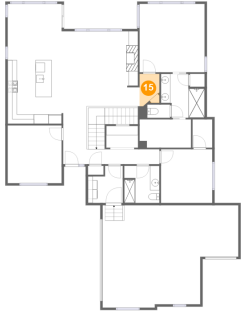


Max Dimensions: 10'11" x 6'0"
Calculated Area: 66 sq. ft
Included: Yes

Heated: Yes
Finished: Yes
Enclosed: Yes
Contiguous: Yes
Permitted: Yes
Wet space: No
Addition: No
Conversion: No

6780 Auburn Hills Drive, Highland Meadows Golf Course,
Windsor, Larimer County, Colorado, United States, 80550

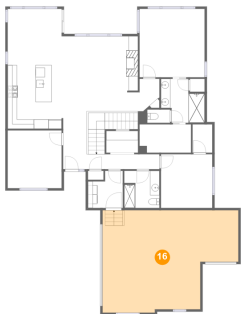
15 Floor 2 - Hall



Max Dimensions: 4'3" x 6'11"
Calculated Area: 27 sq. ft
Included: Yes

Heated: Yes
Finished: Yes
Enclosed: Yes
Contiguous: Yes
Permitted: Yes
Wet space: No
Addition: No
Conversion: No

16 Floor 2 - Garage



Max Dimensions: 28'11" x 21'9"
Calculated Area: 535 sq. ft
Included: No

Heated: No
Finished: No
Enclosed: Yes
Contiguous: Yes
Permitted: Yes
Wet space: No
Addition: No
Conversion: No

17 Floor 2 - Laundry



Max Dimensions: 7'5" x 7'11"
Calculated Area: 50 sq. ft
Included: Yes

Heated: Yes
Finished: Yes
Enclosed: Yes
Contiguous: Yes
Permitted: Yes
Wet space: No
Addition: No
Conversion: No

6780 Auburn Hills Drive, Highland Meadows Golf Course,
Windsor, Larimer County, Colorado, United States, 80550

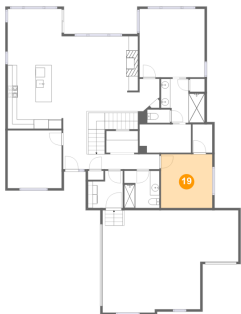
18 Floor 2 - Dining Area



Max Dimensions: 11'9" x 12'0"
Calculated Area: 140 sq. ft
Included: Yes

Heated: Yes
Finished: Yes
Enclosed: Yes
Contiguous: Yes
Permitted: Yes
Wet space: No
Addition: No
Conversion: No

19 Floor 2 - Bedroom



Max Dimensions: 10'11" x 11'5"
Calculated Area: 125 sq. ft
Included: Yes

Heated: Yes
Finished: Yes
Enclosed: Yes
Contiguous: Yes
Permitted: Yes
Wet space: No
Addition: No
Conversion: No

20 Floor 2 - Office



Max Dimensions: 11'6" x 12'4"
Calculated Area: 141 sq. ft
Included: Yes

Heated: Yes
Finished: Yes
Enclosed: Yes
Contiguous: Yes
Permitted: Yes
Wet space: No
Addition: No
Conversion: No

6780 Auburn Hills Drive, Highland Meadows Golf Course,
Windsor, Larimer County, Colorado, United States, 80550

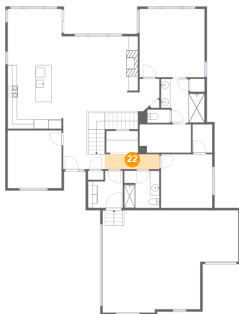
21 Floor 2 - Patio



Max Dimensions: 15'7" x 12'5"
Calculated Area: 195 sq. ft
Included: No

Heated: No
Finished: Yes
Enclosed: No
Contiguous: Yes
Permitted: Yes
Wet space: No
Addition: No
Conversion: No

22 Floor 2 - Hall



Max Dimensions: 11'8" x 3'2"
Calculated Area: 37 sq. ft
Included: Yes

Heated: Yes
Finished: Yes
Enclosed: Yes
Contiguous: Yes
Permitted: Yes
Wet space: No
Addition: No
Conversion: No

23 Floor 2 - WC



Max Dimensions: 4'10" x 2'9"
Calculated Area: 17 sq. ft
Included: Yes

Heated: Yes
Finished: Yes
Enclosed: Yes
Contiguous: Yes
Permitted: Yes
Wet space: Yes
Addition: No
Conversion: No

**6780 Auburn Hills Drive, Highland Meadows Golf Course,
Windsor, Larimer County, Colorado, United States, 80550**

24 Floor 2 - Primary Bedroom



Max Dimensions: 13'10" x 14'6"
Calculated Area: 202 sq. ft
Included: Yes

Heated: Yes
Finished: Yes
Enclosed: Yes
Contiguous: Yes
Permitted: Yes
Wet space: No
Addition: No
Conversion: No

25 Floor 2 - Foyer



Max Dimensions: 8'10" x 12'4"
Calculated Area: 136 sq. ft
Included: Yes

Heated: Yes
Finished: Yes
Enclosed: Yes
Contiguous: Yes
Permitted: Yes
Wet space: No
Addition: No
Conversion: No