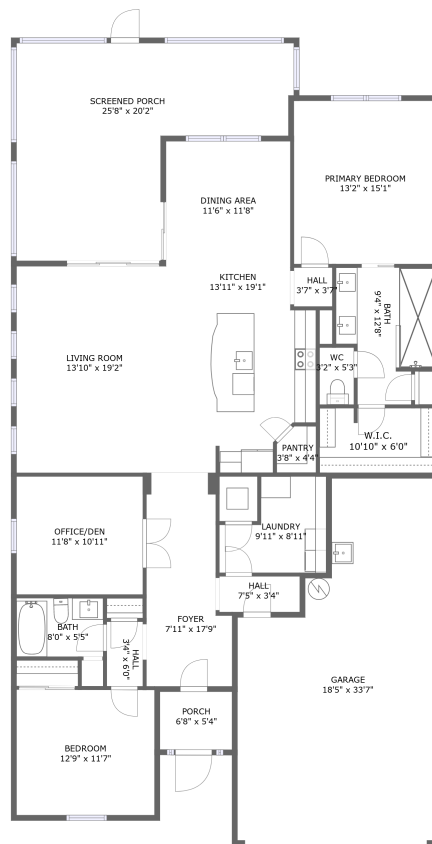



# 13440 Esposito St, Venice, FL, US



## Property summary


 **1** Garages

 **2** Bedrooms

 **2** Bathrooms

 **0** Half baths

 **1** Floors

 **1,842**  
Gross living  
area sqft

 **2,825**  
Total sqft

**13440 Esposito St, Venice, FL, US****Room dimensions****Floor 1****Total sqft: 2825    Living area: 1842**

#		Dimensions	sqft	Counted as living area
1	Bath	9'4" x 12'8"	99 sq. ft	Yes
2	Laundry	9'11" x 8'11"	71 sq. ft	Yes
3	Dining Area	11'6" x 11'8"	134 sq. ft	Yes
4	Hall	3'7" x 3'7"	13 sq. ft	Yes
5	Living Room	13'10" x 19'2"	265 sq. ft	Yes
6	Bedroom	12'9" x 11'7"	148 sq. ft	Yes
7	Bath	8'0" x 5'5"	43 sq. ft	Yes
8	Garage	18'5" x 33'7"	515 sq. ft	No
9	WC	3'2" x 5'3"	17 sq. ft	Yes
10	Foyer	7'11" x 17'9"	124 sq. ft	Yes
11	Primary Bedroom	13'2" x 15'1"	200 sq. ft	Yes

**13440 Esposito St, Venice, FL, US**

#		Dimensions	sqft	Counted as living area
12	Screened Porch	25'8" x 20'2"	373 sq. ft	No
13	Kitchen	13'11" x 19'1"	238 sq. ft	Yes
14	Pantry	3'8" x 4'4"	14 sq. ft	Yes
15	W.I.C.	10'10" x 6'0"	65 sq. ft	Yes
16	Porch	6'8" x 5'4"	36 sq. ft	No
17	Hall	3'4" x 6'0"	20 sq. ft	Yes
18	OFFICE/DEN	11'8" x 10'11"	128 sq. ft	Yes
19	Hall	7'5" x 3'4"	25 sq. ft	Yes

# 13440 Esposito St, Venice, FL, US

## 1 Floor 1 - Bath

---



**Dimensions:** 9'4" x 12'8"  
**Area:** 99 sq. ft  
**Counted as living area:** Yes

**Heated:** Yes  
**Finished:** Yes  
**Enclosed:** Yes  
**Contiguous:** Yes  
**Permitted:** Yes  
**Wet space:** Yes  
**Addition:** No  
**Conversion:** No

## 2 Floor 1 - Laundry

---



**Dimensions:** 9'11" x 8'11"  
**Area:** 71 sq. ft  
**Counted as living area:** Yes

**Heated:** Yes  
**Finished:** Yes  
**Enclosed:** Yes  
**Contiguous:** Yes  
**Permitted:** Yes  
**Wet space:** No  
**Addition:** No  
**Conversion:** No

# 13440 Esposito St, Venice, FL, US

## 3 Floor 1 - Dining Area



**Dimensions:** 11'6" x 11'8"  
**Area:** 134 sq. ft  
**Counted as living area:** Yes

**Heated:** Yes  
**Finished:** Yes  
**Enclosed:** Yes  
**Contiguous:** Yes  
**Permitted:** Yes  
**Wet space:** No  
**Addition:** No  
**Conversion:** No

## 4 Floor 1 - Hall



**Dimensions:** 3'7" x 3'7"  
**Area:** 13 sq. ft  
**Counted as living area:** Yes

**Heated:** Yes  
**Finished:** Yes  
**Enclosed:** Yes  
**Contiguous:** Yes  
**Permitted:** Yes  
**Wet space:** No  
**Addition:** No  
**Conversion:** No

## 5 Floor 1 - Living Room



**Dimensions:** 13'10" x 19'2"  
**Area:** 265 sq. ft  
**Counted as living area:** Yes

**Heated:** Yes  
**Finished:** Yes  
**Enclosed:** Yes  
**Contiguous:** Yes  
**Permitted:** Yes  
**Wet space:** No  
**Addition:** No  
**Conversion:** No

# 13440 Esposito St, Venice, FL, US

## 6 Floor 1 - Bedroom



**Dimensions:** 12'9" x 11'7"  
**Area:** 148 sq. ft  
**Counted as living area:** Yes

**Heated:** Yes  
**Finished:** Yes  
**Enclosed:** Yes  
**Contiguous:** Yes  
**Permitted:** Yes  
**Wet space:** No  
**Addition:** No  
**Conversion:** No

## 7 Floor 1 - Bath



**Dimensions:** 8'0" x 5'5"  
**Area:** 43 sq. ft  
**Counted as living area:** Yes

**Heated:** Yes  
**Finished:** Yes  
**Enclosed:** Yes  
**Contiguous:** Yes  
**Permitted:** Yes  
**Wet space:** Yes  
**Addition:** No  
**Conversion:** No

## 8 Floor 1 - Garage



**Dimensions:** 18'5" x 33'7"  
**Area:** 515 sq. ft  
**Counted as living area:** No

**Heated:** No  
**Finished:** No  
**Enclosed:** Yes  
**Contiguous:** Yes  
**Permitted:** Yes  
**Wet space:** No  
**Addition:** No  
**Conversion:** No

**9** Floor 1 - WC



Dimensions: 3'2" x 5'3"  
Area: 17 sq. ft  
Counted as living area: Yes

Heated: Yes  
Finished: Yes  
Enclosed: Yes  
Contiguous: Yes  
Permitted: Yes  
Wet space: Yes  
Addition: No  
Conversion: No

**10** Floor 1 - Foyer



Dimensions: 7'11" x 17'9"  
Area: 124 sq. ft  
Counted as living area: Yes

Heated: Yes  
Finished: Yes  
Enclosed: Yes  
Contiguous: Yes  
Permitted: Yes  
Wet space: No  
Addition: No  
Conversion: No

**11** Floor 1 - Primary Bedroom



Dimensions: 13'2" x 15'1"  
Area: 200 sq. ft  
Counted as living area: Yes

Heated: Yes  
Finished: Yes  
Enclosed: Yes  
Contiguous: Yes  
Permitted: Yes  
Wet space: No  
Addition: No  
Conversion: No

**12** Floor 1 - Screened Porch



Dimensions: 25'8" x 20'2"  
Area: 373 sq. ft  
Counted as living area: No

Heated: No  
Finished: Yes  
Enclosed: No  
Contiguous: Yes  
Permitted: Yes  
Wet space: No  
Addition: No  
Conversion: No

**13** Floor 1 - Kitchen



Dimensions: 13'11" x 19'1"  
Area: 238 sq. ft  
Counted as living area: Yes

Heated: Yes  
Finished: Yes  
Enclosed: Yes  
Contiguous: Yes  
Permitted: Yes  
Wet space: No  
Addition: No  
Conversion: No

**14** Floor 1 - Pantry



Dimensions: 3'8" x 4'4"  
Area: 14 sq. ft  
Counted as living area: Yes

Heated: Yes  
Finished: Yes  
Enclosed: Yes  
Contiguous: Yes  
Permitted: Yes  
Wet space: No  
Addition: No  
Conversion: No



**15** Floor 1 - W.I.C.



Dimensions: 10'10" x 6'0"  
Area: 65 sq. ft  
Counted as living area: Yes

Heated: Yes  
Finished: Yes  
Enclosed: Yes  
Contiguous: Yes  
Permitted: Yes  
Wet space: No  
Addition: No  
Conversion: No

**16** Floor 1 - Porch



Dimensions: 6'8" x 5'4"  
Area: 36 sq. ft  
Counted as living area: No

Heated: No  
Finished: Yes  
Enclosed: No  
Contiguous: Yes  
Permitted: Yes  
Wet space: No  
Addition: No  
Conversion: No

**17** Floor 1 - Hall



Dimensions: 3'4" x 6'0"  
Area: 20 sq. ft  
Counted as living area: Yes

Heated: Yes  
Finished: Yes  
Enclosed: Yes  
Contiguous: Yes  
Permitted: Yes  
Wet space: No  
Addition: No  
Conversion: No

**18** Floor 1 - OFFICE/DEN

---



**Dimensions:** 11'8" x 10'11"  
**Area:** 128 sq. ft  
**Counted as living area:** Yes

**Heated:** Yes  
**Finished:** Yes  
**Enclosed:** Yes  
**Contiguous:** Yes  
**Permitted:** Yes  
**Wet space:** No  
**Addition:** No  
**Conversion:** No

**19** Floor 1 - Hall

---



**Dimensions:** 7'5" x 3'4"  
**Area:** 25 sq. ft  
**Counted as living area:** Yes

**Heated:** Yes  
**Finished:** Yes  
**Enclosed:** Yes  
**Contiguous:** Yes  
**Permitted:** Yes  
**Wet space:** No  
**Addition:** No  
**Conversion:** No