

207 Meryton Lane, Cranberry Township, Butler County, Pennsylvania, United States, 16066

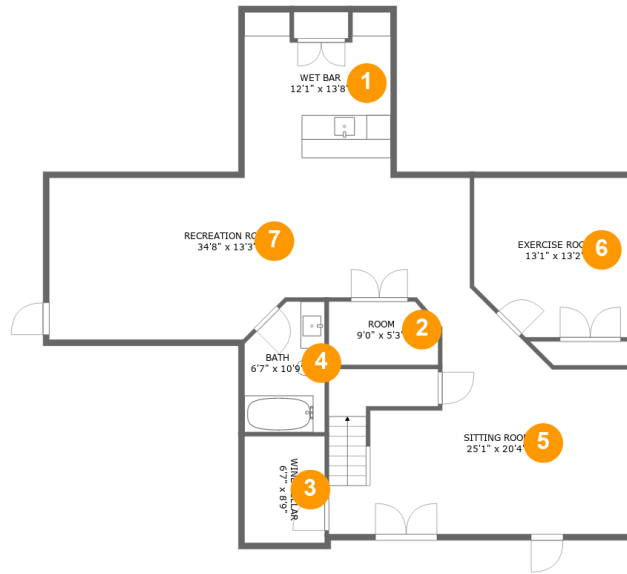


Property Summary

1 garages **4** bedrooms **4** bathrooms **1** half baths

3 floors **5,017** Gross Living Area sqft **5,915** total sqft

207 Meryton Lane, Cranberry Township, Butler County, Pennsylvania, United States, 16066



Room Dimensions

Floor 1

Total sqft: 1418

Living area: 1352

#	Room name	Dimensions	Area (sqft)	Counted as Living Area
1	Wet Bar	12'1" x 13'8"	152 sq. ft	Yes
2	Room	9'0" x 5'3"	45 sq. ft	Yes
3	Wine Cellar	6'7" x 8'9"	58 sq. ft	No
4	Bath	6'7" x 10'9"	65 sq. ft	Yes
5	Sitting Room	25'1" x 20'4"	371 sq. ft	Yes
6	Exercise Room	13'1" x 13'2"	163 sq. ft	Yes
7	Recreation Room	34'8" x 13'3"	409 sq. ft	Yes

207 Meryton Lane, Cranberry Township, Butler County, Pennsylvania, United States, 16066



Room Dimensions

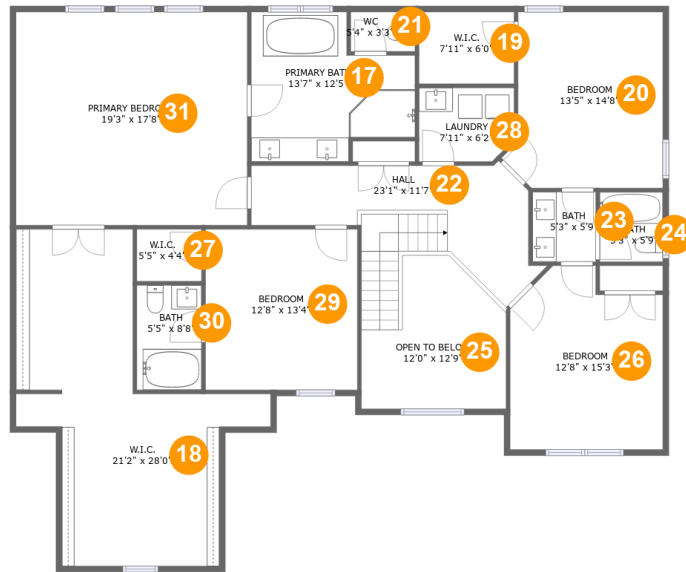
Floor 2

Total sqft: 2405

Living area: 1701

#	Room name	Dimensions	Area (sqft)	Counted as Living Area
8	Wc	6'8" x 6'11"	46 sq. ft	Yes
9	Foyer	12'0" x 18'7"	245 sq. ft	Yes
10	Dining Room	12'8" x 15'11"	197 sq. ft	Yes
11	Breakfast Nook	13'1" x 12'11"	169 sq. ft	Yes
12	Room	6'7" x 14'7"	80 sq. ft	Yes
13	Kitchen	19'1" x 17'1"	300 sq. ft	Yes
14	Living Room	21'5" x 15'3"	336 sq. ft	Yes
15	Office	12'8" x 12'10"	157 sq. ft	Yes
16	Garage	21'3" x 31'8"	659 sq. ft	No

207 Meryton Lane, Cranberry Township, Butler County, Pennsylvania, United States, 16066



Room Dimensions

Floor 3

Total sqft: 2092

Living area: 1964

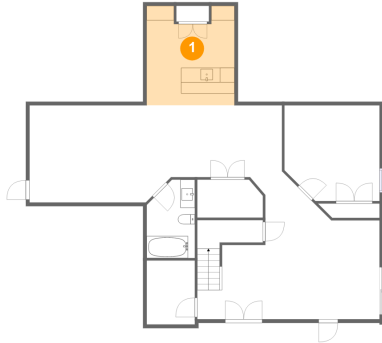
#	Room name	Dimensions	Area (sqft)	Counted as Living Area
17	Primary Bath	13'7" x 12'5"	137 sq. ft	Yes
18	W.i.c.	21'2" x 28'0"	340 sq. ft	Yes
19	W.i.c.	7'11" x 6'0"	47 sq. ft	Yes
20	Bedroom	13'5" x 14'8"	177 sq. ft	Yes
21	Wc	5'4" x 3'3"	17 sq. ft	Yes
22	Hall	23'1" x 11'7"	187 sq. ft	Yes
23	Bath	5'3" x 5'9"	30 sq. ft	Yes
24	Bath	5'3" x 5'9"	30 sq. ft	Yes
25	Open To Below	12'0" x 12'9"	121 sq. ft	No
26	Bedroom	12'8" x 15'3"	174 sq. ft	Yes
27	W.i.c.	5'5" x 4'4"	23 sq. ft	Yes

**207 Meryton Lane, Cranberry Township, Butler
County, Pennsylvania, United States, 16066**

#	Room name	Dimensions	Area (sqft)	Counted as Living Area
28	Laundry	7'11" x 6'2"	47 sq. ft	Yes
29	Bedroom	12'8" x 13'4"	169 sq. ft	Yes
30	Bath	5'5" x 8'8"	47 sq. ft	Yes
31	Primary Bedroom	19'3" x 17'8"	340 sq. ft	Yes

207 Meryton Lane, Cranberry Township, Butler County, Pennsylvania, United States, 16066

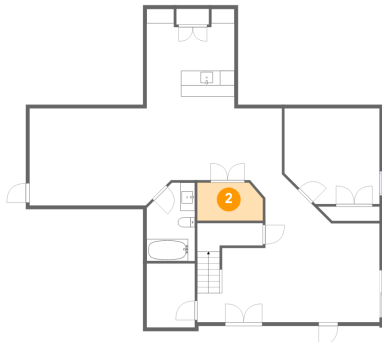
1 Floor 1 - Wet Bar



Dimensions: 12'1" x 13'8"
Area: 152 sq. ft
Counted as Living Area:
Yes

Heated: Yes
Finished: Yes
Enclosed: Yes
Contiguous:
Yes
Permitted: Yes
Wet Space: No
Addition: No
Conversion: No

2 Floor 1 - Room

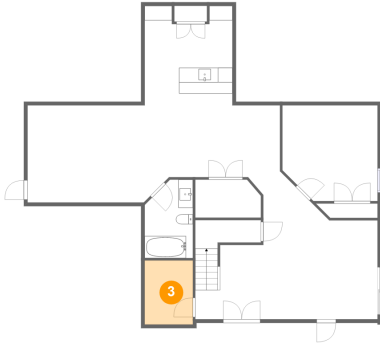


Dimensions: 9'0" x 5'3"
Area: 45 sq. ft
Counted as Living Area:
Yes

Heated: Yes
Finished: Yes
Enclosed: Yes
Contiguous:
Yes
Permitted: Yes
Wet Space: No
Addition: No
Conversion: No

207 Meryton Lane, Cranberry Township, Butler County, Pennsylvania, United States, 16066

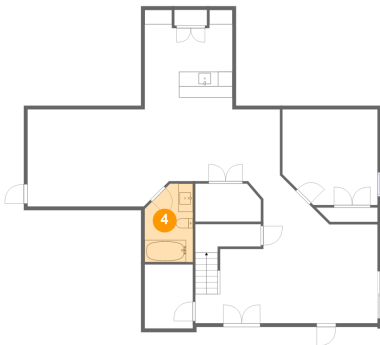
3 Floor 1 - Wine Cellar



Dimensions: 6'7" x 8'9"
Area: 58 sq. ft
Counted as Living Area: No

Heated: No
Finished: No
Enclosed: Yes
Contiguous: Yes
Permitted: Yes
Wet Space: No
Addition: No
Conversion: No

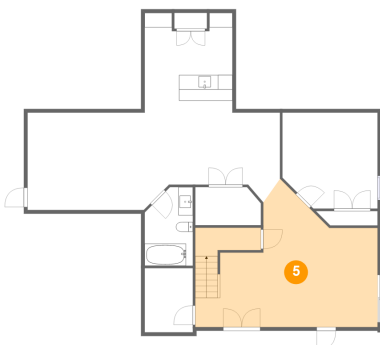
4 Floor 1 - Bath



Dimensions: 6'7" x 10'9"
Area: 65 sq. ft
Counted as Living Area: Yes

Heated: Yes
Finished: Yes
Enclosed: Yes
Contiguous: Yes
Permitted: Yes
Wet Space: Yes
Addition: No
Conversion: No

5 Floor 1 - Sitting Room

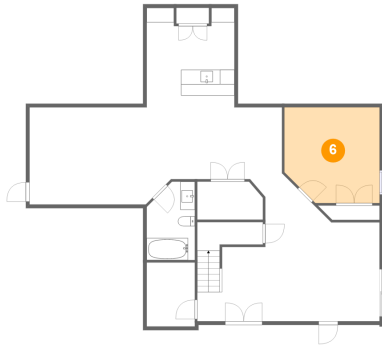


Dimensions: 25'1" x 20'4"
Area: 371 sq. ft
Counted as Living Area: Yes

Heated: Yes
Finished: Yes
Enclosed: Yes
Contiguous: Yes
Permitted: Yes
Wet Space: No
Addition: No
Conversion: No

207 Meryton Lane, Cranberry Township, Butler County, Pennsylvania, United States, 16066

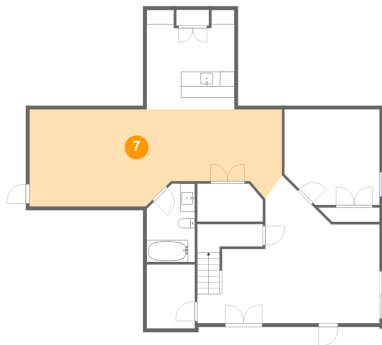
6 Floor 1 - Exercise Room



Dimensions: 13'1" x 13'2"
Area: 163 sq. ft
Counted as Living Area:
Yes

Heated: Yes
Finished: Yes
Enclosed: Yes
Contiguous:
Yes
Permitted: Yes
Wet Space: No
Addition: No
Conversion: No

7 Floor 1 - Recreation Room



Dimensions: 34'8" x 13'3"
Area: 409 sq. ft
Counted as Living Area:
Yes

Heated: Yes
Finished: Yes
Enclosed: Yes
Contiguous:
Yes
Permitted: Yes
Wet Space: No
Addition: No
Conversion: No

8 Floor 2 - Wc



Dimensions: 6'8" x 6'11"
Area: 46 sq. ft
Counted as Living Area:
Yes

Heated: Yes
Finished: Yes
Enclosed: Yes
Contiguous:
Yes
Permitted: Yes
Wet Space: Yes
Addition: No
Conversion: No

207 Meryton Lane, Cranberry Township, Butler County, Pennsylvania, United States, 16066

9 Floor 2 - Foyer



Dimensions: 12'0" x 18'7"
Area: 245 sq. ft
Counted as Living Area:
Yes

Heated: Yes
Finished: Yes
Enclosed: Yes
Contiguous:
Yes
Permitted: Yes
Wet Space: No
Addition: No
Conversion: No

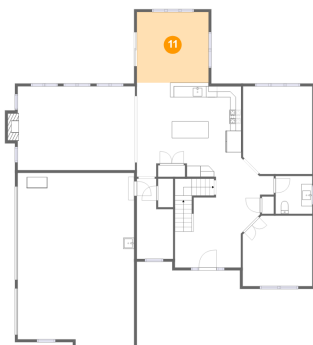
10 Floor 2 - Dining Room



Dimensions: 12'8" x 15'11"
Area: 197 sq. ft
Counted as Living Area:
Yes

Heated: Yes
Finished: Yes
Enclosed: Yes
Contiguous:
Yes
Permitted: Yes
Wet Space: No
Addition: No
Conversion: No

11 Floor 2 - Breakfast Nook



Dimensions: 13'1" x 12'11"
Area: 169 sq. ft
Counted as Living Area:
Yes

Heated: Yes
Finished: Yes
Enclosed: Yes
Contiguous:
Yes
Permitted: Yes
Wet Space: No
Addition: No
Conversion: No

207 Meryton Lane, Cranberry Township, Butler County, Pennsylvania, United States, 16066

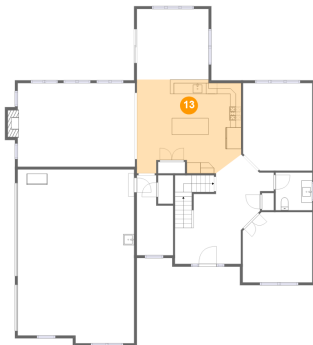
12 Floor 2 - Room



Dimensions: 6'7" x 14'7"
Area: 80 sq. ft
Counted as Living Area:
Yes

Heated: Yes
Finished: Yes
Enclosed: Yes
Contiguous:
Yes
Permitted: Yes
Wet Space: No
Addition: No
Conversion: No

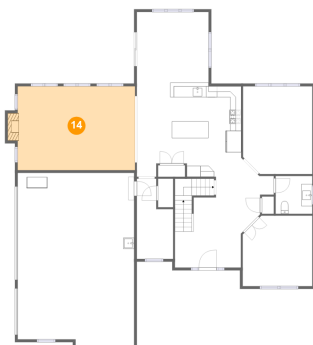
13 Floor 2 - Kitchen



Dimensions: 19'1" x 17'1"
Area: 300 sq. ft
Counted as Living Area:
Yes

Heated: Yes
Finished: Yes
Enclosed: Yes
Contiguous:
Yes
Permitted: Yes
Wet Space: No
Addition: No
Conversion: No

14 Floor 2 - Living Room

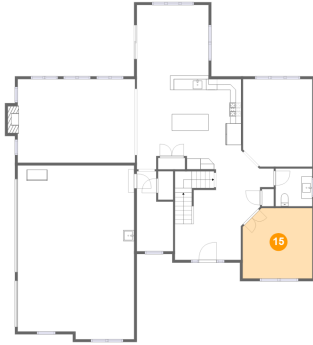


Dimensions: 21'5" x 15'3"
Area: 336 sq. ft
Counted as Living Area:
Yes

Heated: Yes
Finished: Yes
Enclosed: Yes
Contiguous:
Yes
Permitted: Yes
Wet Space: No
Addition: No
Conversion: No

207 Meryton Lane, Cranberry Township, Butler County, Pennsylvania, United States, 16066

15 Floor 2 - Office



Dimensions: 12'8" x 12'10"
Area: 157 sq. ft
Counted as Living Area:
Yes

Heated: Yes
Finished: Yes
Enclosed: Yes
Contiguous:
Yes
Permitted: Yes
Wet Space: No
Addition: No
Conversion: No

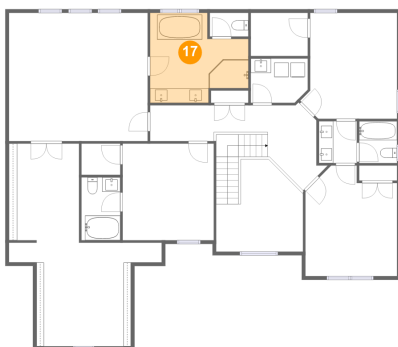
16 Floor 2 - Garage



Dimensions: 21'3" x 31'8"
Area: 659 sq. ft
Counted as Living Area: No

Heated: No
Finished: No
Enclosed: Yes
Contiguous: Yes
Permitted: Yes
Wet Space: No
Addition: No
Conversion: No

17 Floor 3 - Primary Bath



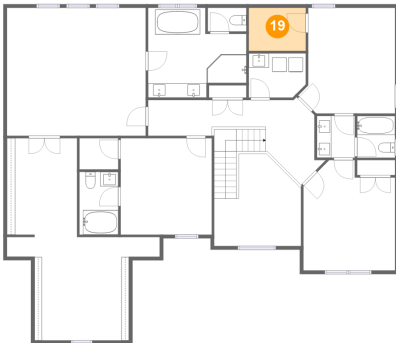
Dimensions: 13'7" x 12'5"
Area: 137 sq. ft
Counted as Living Area:
Yes

Heated: Yes
Finished: Yes
Enclosed: Yes
Contiguous:
Yes
Permitted: Yes
Wet Space: Yes
Addition: No
Conversion: No

207 Meryton Lane, Cranberry Township, Butler County, Pennsylvania, United States, 16066**18 Floor 3 - W.i.c.**

Dimensions: 21'2" x 28'0"
Area: 340 sq. ft
Counted as Living Area:
Yes

Heated: Yes
Finished: Yes
Enclosed: Yes
Contiguous:
Yes
Permitted: Yes
Wet Space: No
Addition: No
Conversion: No

19 Floor 3 - W.i.c.

Dimensions: 7'11" x 6'0"
Area: 47 sq. ft
Counted as Living Area:
Yes

Heated: Yes
Finished: Yes
Enclosed: Yes
Contiguous:
Yes
Permitted: Yes
Wet Space: No
Addition: No
Conversion: No

20 Floor 3 - Bedroom

Dimensions: 13'5" x 14'8"
Area: 177 sq. ft
Counted as Living Area:
Yes

Heated: Yes
Finished: Yes
Enclosed: Yes
Contiguous:
Yes
Permitted: Yes
Wet Space: No
Addition: No
Conversion: No

207 Meryton Lane, Cranberry Township, Butler County, Pennsylvania, United States, 16066

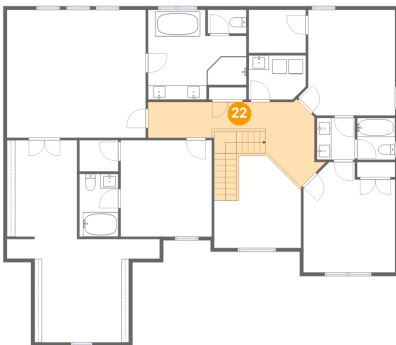
21 Floor 3 - Wc



Dimensions: 5'4" x 3'3"
Area: 17 sq. ft
Counted as Living Area:
Yes

Heated: Yes
Finished: Yes
Enclosed: Yes
Contiguous:
Yes
Permitted: Yes
Wet Space: Yes
Addition: No
Conversion: No

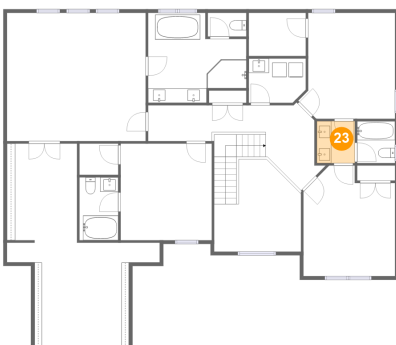
22 Floor 3 - Hall



Dimensions: 23'1" x 11'7"
Area: 187 sq. ft
Counted as Living Area:
Yes

Heated: Yes
Finished: Yes
Enclosed: Yes
Contiguous:
Yes
Permitted: Yes
Wet Space: No
Addition: No
Conversion: No

23 Floor 3 - Bath



Dimensions: 5'3" x 5'9"
Area: 30 sq. ft
Counted as Living Area:
Yes

Heated: Yes
Finished: Yes
Enclosed: Yes
Contiguous:
Yes
Permitted: Yes
Wet Space: Yes
Addition: No
Conversion: No

207 Meryton Lane, Cranberry Township, Butler County, Pennsylvania, United States, 16066

24 Floor 3 - Bath



Dimensions: 5'3" x 5'9"
Area: 30 sq. ft
Counted as Living Area:
Yes

Heated: Yes
Finished: Yes
Enclosed: Yes
Contiguous:
Yes
Permitted: Yes
Wet Space: Yes
Addition: No
Conversion: No

25 Floor 3 - Open To Below



Dimensions: 12'0" x 12'9"
Area: 121 sq. ft
Counted as Living Area: No

Heated: No
Finished: No
Enclosed: No
Contiguous: Yes
Permitted: No
Wet Space: No
Addition: No
Conversion: No

26 Floor 3 - Bedroom



Dimensions: 12'8" x 15'3"
Area: 174 sq. ft
Counted as Living Area:
Yes

Heated: Yes
Finished: Yes
Enclosed: Yes
Contiguous:
Yes
Permitted: Yes
Wet Space: No
Addition: No
Conversion: No

207 Meryton Lane, Cranberry Township, Butler County, Pennsylvania, United States, 16066

27 Floor 3 - W.i.c.



Dimensions: 5'5" x 4'4"
Area: 23 sq. ft
Counted as Living Area:
Yes

Heated: Yes
Finished: Yes
Enclosed: Yes
Contiguous:
Yes
Permitted: Yes
Wet Space: No
Addition: No
Conversion: No

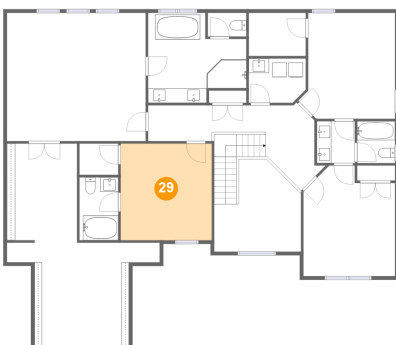
28 Floor 3 - Laundry



Dimensions: 7'11" x 6'2"
Area: 47 sq. ft
Counted as Living Area:
Yes

Heated: Yes
Finished: Yes
Enclosed: Yes
Contiguous:
Yes
Permitted: Yes
Wet Space: No
Addition: No
Conversion: No

29 Floor 3 - Bedroom

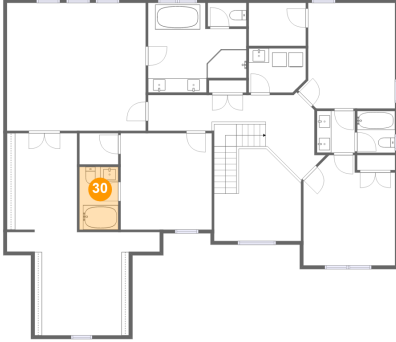


Dimensions: 12'8" x 13'4"
Area: 169 sq. ft
Counted as Living Area:
Yes

Heated: Yes
Finished: Yes
Enclosed: Yes
Contiguous:
Yes
Permitted: Yes
Wet Space: No
Addition: No
Conversion: No

207 Meryton Lane, Cranberry Township, Butler County, Pennsylvania, United States, 16066

30 Floor 3 - Bath



Dimensions: 5'5" x 8'8"
Area: 47 sq. ft
Counted as Living Area:
Yes

Heated: Yes
Finished: Yes
Enclosed: Yes
Contiguous:
Yes
Permitted: Yes
Wet Space: Yes
Addition: No
Conversion: No

31 Floor 3 - Primary Bedroom



Dimensions: 19'3" x 17'8"
Area: 340 sq. ft
Counted as Living Area:
Yes

Heated: Yes
Finished: Yes
Enclosed: Yes
Contiguous:
Yes
Permitted: Yes
Wet Space: No
Addition: No
Conversion: No