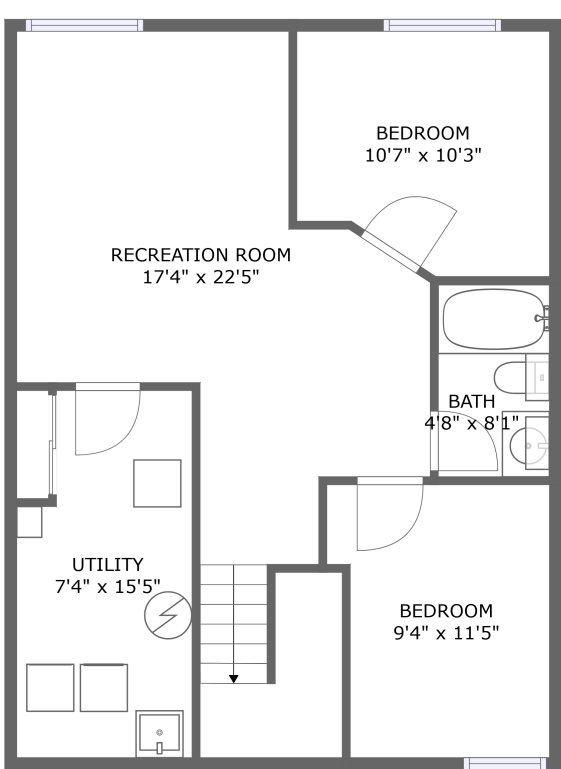
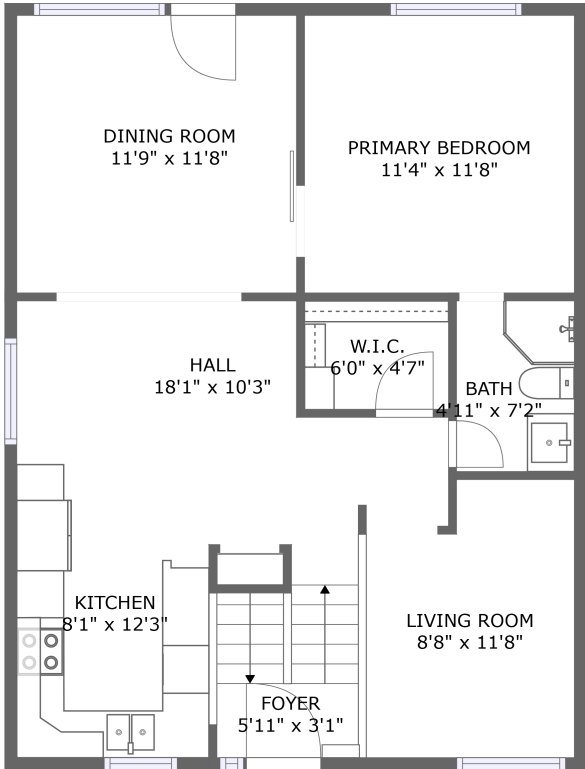


Home report

175 Castlefrank Road, Glen Cairn, Kanata, Ontario, Canada, K2L 1T3




FLOOR 1




FLOOR 2

Property summary

 **0** Garages


 **3** Bedrooms

 **2** Bathrooms

 **0** Half baths

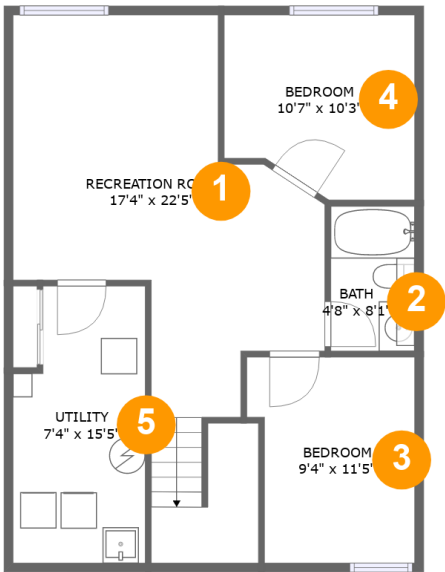
 **2** Floors

 **1,374** Gross living area sqft

 **1,495** Total sqft

Home report

175 Castlefrank Road, Glen Cairn, Kanata, Ontario, Canada, K2L 1T3



Room dimensions

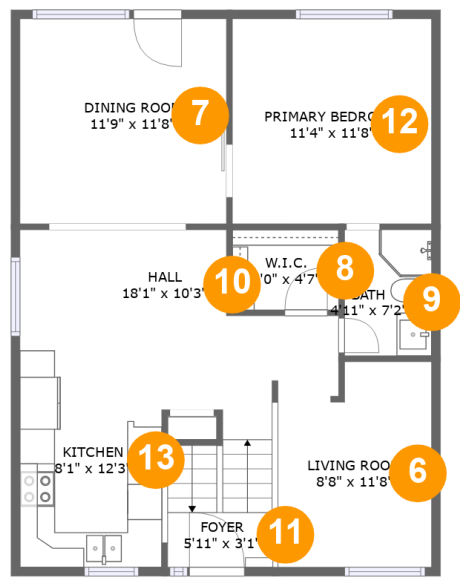
Floor 1

Total sqft: 719 Living area: 598

#		Dimensions	sqft	Counted as living area
1	Recreation Room	17'4" x 22'5"	305 sq. ft	Yes
2	Bath	4'8" x 8'1"	38 sq. ft	Yes
3	Bedroom	9'4" x 11'5"	99 sq. ft	Yes
4	Bedroom	10'7" x 10'3"	100 sq. ft	Yes
5	Utility	7'4" x 15'5"	105 sq. ft	No

Home report

175 Castlefrank Road, Glen Cairn, Kanata, Ontario, Canada, K2L 1T3



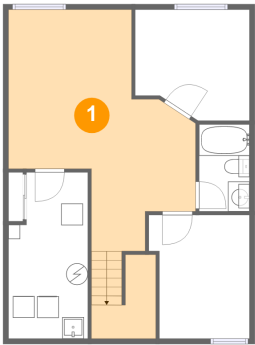
Room dimensions

Floor 2

Total sqft: 776 Living area: 776

#		Dimensions	sqft	Counted as living area
6	Living Room	8'8" x 11'8"	93 sq. ft	Yes
7	Dining Room	11'9" x 11'8"	137 sq. ft	Yes
8	W.I.C.	6'0" x 4'7"	27 sq. ft	Yes
9	Bath	4'11" x 7'2"	35 sq. ft	Yes
10	Hall	18'1" x 10'3"	130 sq. ft	Yes
11	Foyer	5'11" x 3'1"	47 sq. ft	Yes
12	Primary Bedroom	11'4" x 11'8"	132 sq. ft	Yes
13	Kitchen	8'1" x 12'3"	99 sq. ft	Yes

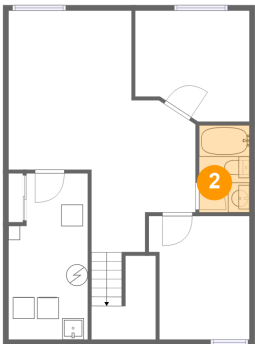
1 Floor 1 - Recreation Room



Dimensions: 17'4" x 22'5"
Area: 305 sq. ft
Counted as living area: Yes

Heated: Yes
Finished: Yes
Enclosed: Yes
Contiguous: Yes
Permitted: Yes
Wet space: No
Addition: No
Conversion: No

2 Floor 1 - Bath



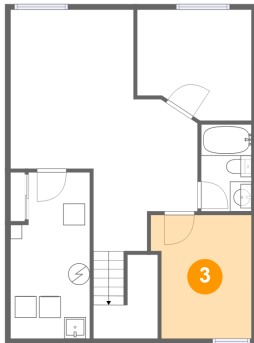
Dimensions: 4'8" x 8'1"
Area: 38 sq. ft
Counted as living area: Yes

Heated: Yes
Finished: Yes
Enclosed: Yes
Contiguous: Yes
Permitted: Yes
Wet space: Yes
Addition: No
Conversion: No

Home report

175 Castlefrank Road, Glen Cairn, Kanata, Ontario, Canada, K2L 1T3

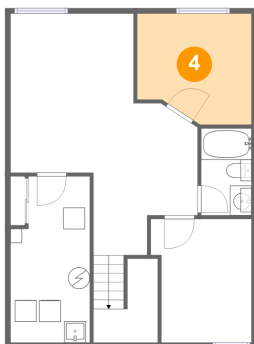
3 Floor 1 - Bedroom



Dimensions: 9'4" x 11'5"
Area: 99 sq. ft
Counted as living area: Yes

Heated: Yes
Finished: Yes
Enclosed: Yes
Contiguous: Yes
Permitted: Yes
Wet space: No
Addition: No
Conversion: No

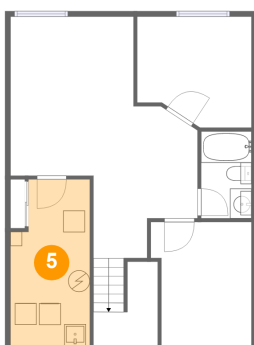
4 Floor 1 - Bedroom



Dimensions: 10'7" x 10'3"
Area: 100 sq. ft
Counted as living area: Yes

Heated: Yes
Finished: Yes
Enclosed: Yes
Contiguous: Yes
Permitted: Yes
Wet space: No
Addition: No
Conversion: No

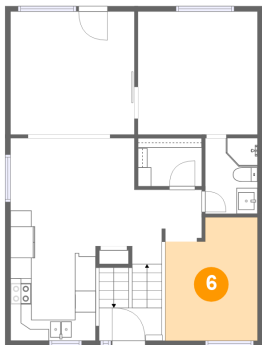
5 Floor 1 - Utility



Dimensions: 7'4" x 15'5"
Area: 105 sq. ft
Counted as living area: No

Heated: Yes
Finished: No
Enclosed: Yes
Contiguous: Yes
Permitted: Yes
Wet space: No
Addition: No
Conversion: No

6 Floor 2 - Living Room



Dimensions: 8'8" x 11'8"
Area: 93 sq. ft
Counted as living area: Yes

Heated: Yes
Finished: Yes
Enclosed: Yes
Contiguous: Yes
Permitted: Yes
Wet space: No
Addition: No
Conversion: No

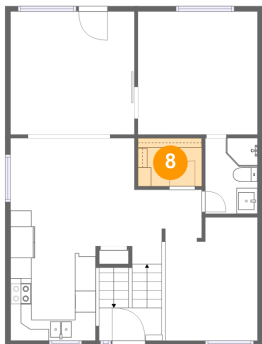
7 Floor 2 - Dining Room



Dimensions: 11'9" x 11'8"
Area: 137 sq. ft
Counted as living area: Yes

Heated: Yes
Finished: Yes
Enclosed: Yes
Contiguous: Yes
Permitted: Yes
Wet space: No
Addition: No
Conversion: No

8 Floor 2 - W.I.C.



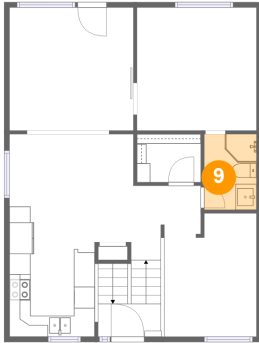
Dimensions: 6'0" x 4'7"
Area: 27 sq. ft
Counted as living area: Yes

Heated: Yes
Finished: Yes
Enclosed: Yes
Contiguous: Yes
Permitted: Yes
Wet space: No
Addition: No
Conversion: No

Home report

175 Castlefrank Road, Glen Cairn, Kanata, Ontario, Canada, K2L 1T3

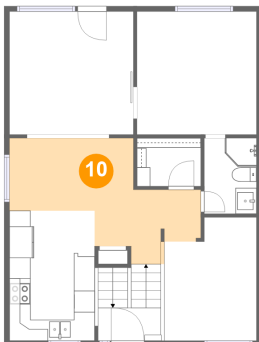
9 Floor 2 - Bath



Dimensions: 4'11" x 7'2"
Area: 35 sq. ft
Counted as living area: Yes

Heated: Yes
Finished: Yes
Enclosed: Yes
Contiguous: Yes
Permitted: Yes
Wet space: Yes
Addition: No
Conversion: No

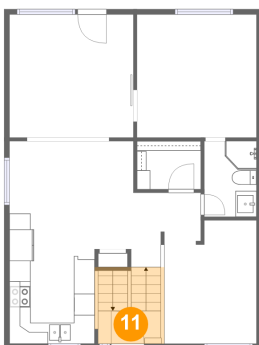
10 Floor 2 - Hall



Dimensions: 18'1" x 10'3"
Area: 130 sq. ft
Counted as living area: Yes

Heated: Yes
Finished: Yes
Enclosed: Yes
Contiguous: Yes
Permitted: Yes
Wet space: No
Addition: No
Conversion: No

11 Floor 2 - Foyer



Dimensions: 5'11" x 3'1"
Area: 47 sq. ft
Counted as living area: Yes

Heated: Yes
Finished: Yes
Enclosed: Yes
Contiguous: Yes
Permitted: Yes
Wet space: No
Addition: No
Conversion: No

175 Castlefrank Road, Glen Cairn, Kanata, Ontario, Canada, K2L 1T3

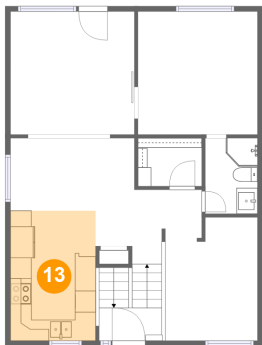
12 Floor 2 - Primary Bedroom



Dimensions: 11'4" x 11'8"
Area: 132 sq. ft
Counted as living area: Yes

Heated: Yes
Finished: Yes
Enclosed: Yes
Contiguous: Yes
Permitted: Yes
Wet space: No
Addition: No
Conversion: No

13 Floor 2 - Kitchen



Dimensions: 8'1" x 12'3"
Area: 99 sq. ft
Counted as living area: Yes

Heated: Yes
Finished: Yes
Enclosed: Yes
Contiguous: Yes
Permitted: Yes
Wet space: No
Addition: No
Conversion: No