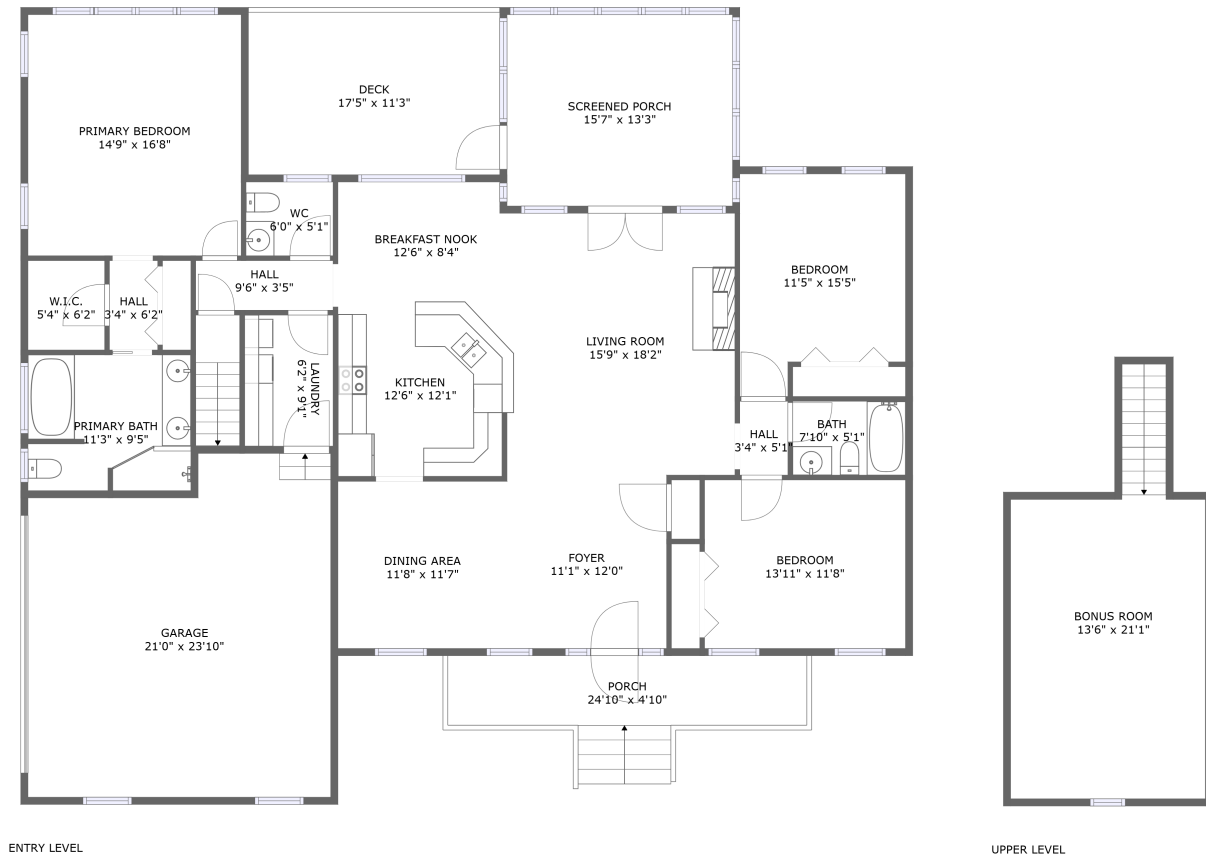



112 Pointe O Woods Drive, Huddleston, Bedford County, Virginia, United States, 24104



Property summary

 **1** Garages

 **3** Bedrooms

 **2** Bathrooms

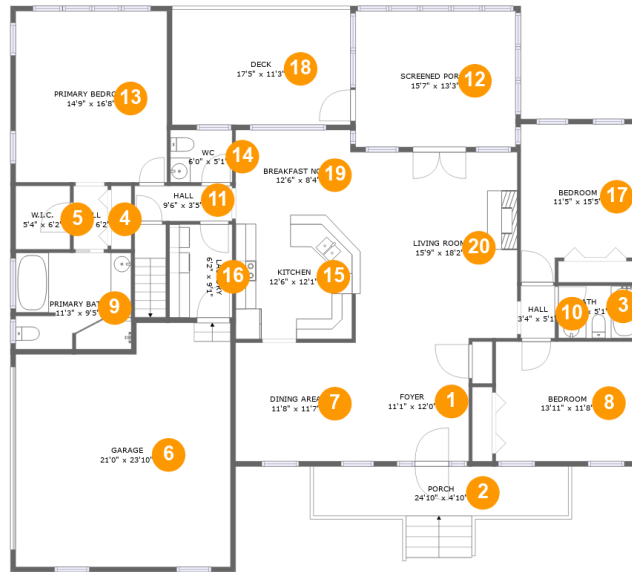
 **1** Half baths

 **2** Floors

 **2,183** Gross living area sqft

 **3,334** Total sqft

112 Pointe O Woods Drive, Huddleston, Bedford County, Virginia, United States, 24104



Room dimensions

Floor 1

Total sqft: 2981

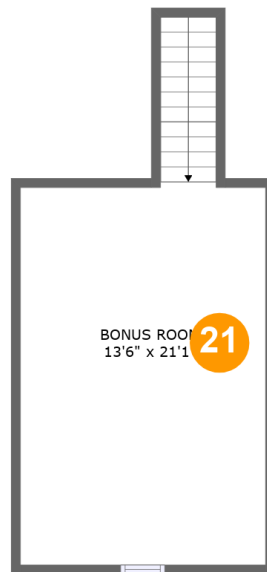
Living area: 1950

#		Dimensions	sqft	Counted as living area
1	Foyer	11'1" x 12'0"	133 sq. ft	Yes
2	Porch	24'10" x 4'10"	120 sq. ft	No
3	Bath	7'10" x 5'1"	40 sq. ft	Yes
4	Hall	3'4" x 6'2"	21 sq. ft	Yes
5	W.I.C.	5'4" x 6'2"	33 sq. ft	Yes
6	Garage	21'0" x 23'10"	463 sq. ft	No
7	Dining Area	11'8" x 11'7"	136 sq. ft	Yes
8	Bedroom	13'11" x 11'8"	162 sq. ft	Yes
9	Primary Bath	11'3" x 9'5"	104 sq. ft	Yes
10	Hall	3'4" x 5'1"	17 sq. ft	Yes
11	Hall	9'6" x 3'5"	33 sq. ft	Yes

**112 Pointe O Woods Drive, Huddleston, Bedford
County, Virginia, United States, 24104**

#		Dimensions	sqft	Counted as living area
12	Screened Porch	15'7" x 13'3"	207 sq. ft	No
13	Primary Bedroom	14'9" x 16'8"	247 sq. ft	Yes
14	WC	6'0" x 5'1"	31 sq. ft	Yes
15	Kitchen	12'6" x 12'1"	146 sq. ft	Yes
16	Laundry	6'2" x 9'1"	56 sq. ft	Yes
17	Bedroom	11'5" x 15'5"	157 sq. ft	Yes
18	Deck	17'5" x 11'3"	196 sq. ft	No
19	Breakfast Nook	12'6" x 8'4"	101 sq. ft	Yes
20	Living Room	15'9" x 18'2"	275 sq. ft	Yes

112 Pointe O Woods Drive, Huddleston, Bedford County, Virginia, United States, 24104



Room dimensions

Floor 2

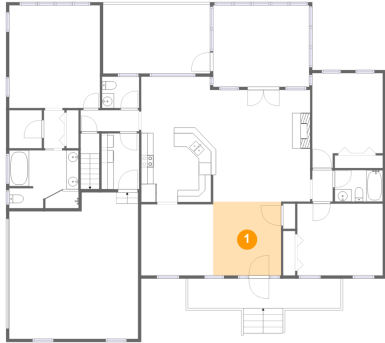
Total sqft: 353

Living area: 233

#		Dimensions	sqft	Counted as living area
21	Bonus Room	13'6" x 21'1"	215 sq. ft	Yes

112 Pointe O Woods Drive, Huddleston, Bedford County, Virginia, United States, 24104

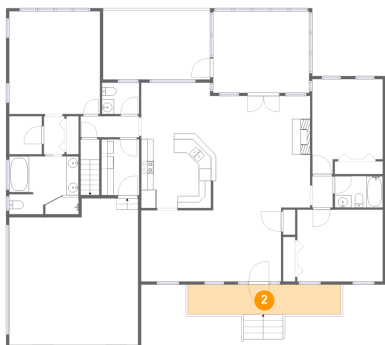
1 Floor 1 - Foyer



Dimensions: 11'1" x 12'0"
Area: 133 sq. ft
Counted as living area: Yes

Heated: Yes
Finished: Yes
Enclosed: Yes
Contiguous: Yes
Permitted: Yes
Wet space: No
Addition: No
Conversion: No

2 Floor 1 - Porch

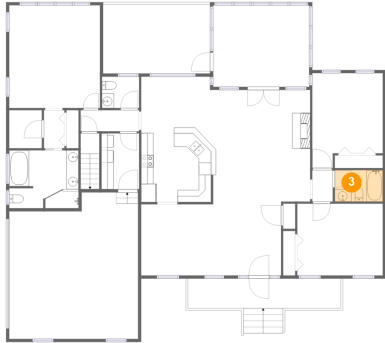


Dimensions: 24'10" x 4'10"
Area: 120 sq. ft
Counted as living area: No

Heated: No
Finished: Yes
Enclosed: No
Contiguous: Yes
Permitted: Yes
Wet space: No
Addition: No
Conversion: No

112 Pointe O Woods Drive, Huddleston, Bedford County, Virginia, United States, 24104

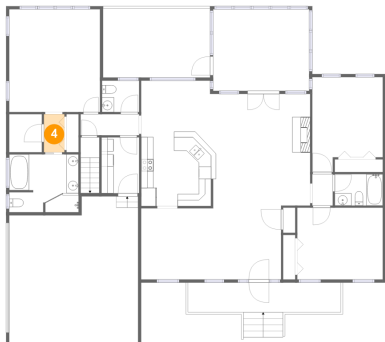
3 Floor 1 - Bath



Dimensions: 7'10" x 5'1"
Area: 40 sq. ft
Counted as living area: Yes

Heated: Yes
Finished: Yes
Enclosed: Yes
Contiguous: Yes
Permitted: Yes
Wet space: Yes
Addition: No
Conversion: No

4 Floor 1 - Hall



Dimensions: 3'4" x 6'2"
Area: 21 sq. ft
Counted as living area: Yes

Heated: Yes
Finished: Yes
Enclosed: Yes
Contiguous: Yes
Permitted: Yes
Wet space: No
Addition: No
Conversion: No

5 Floor 1 - W.I.C.

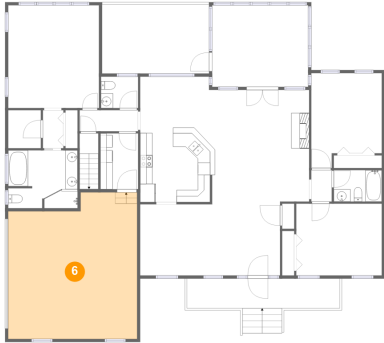


Dimensions: 5'4" x 6'2"
Area: 33 sq. ft
Counted as living area: Yes

Heated: Yes
Finished: Yes
Enclosed: Yes
Contiguous: Yes
Permitted: Yes
Wet space: No
Addition: No
Conversion: No

112 Pointe O Woods Drive, Huddleston, Bedford County, Virginia, United States, 24104

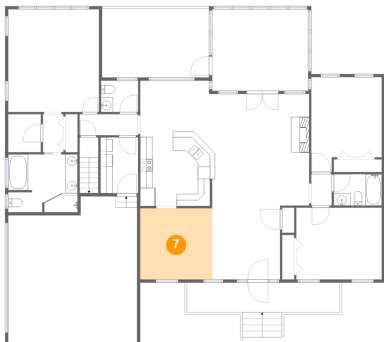
6 Floor 1 - Garage



Dimensions: 21'0" x 23'10"
Area: 463 sq. ft
Counted as living area: No

Heated: No
Finished: No
Enclosed: Yes
Contiguous: Yes
Permitted: Yes
Wet space: No
Addition: No
Conversion: No

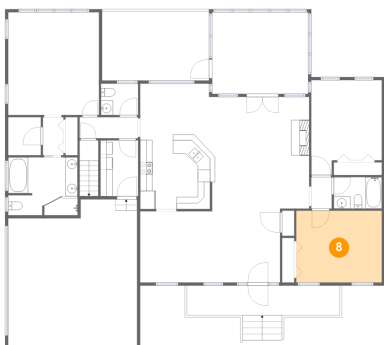
7 Floor 1 - Dining Area



Dimensions: 11'8" x 11'7"
Area: 136 sq. ft
Counted as living area: Yes

Heated: Yes
Finished: Yes
Enclosed: Yes
Contiguous: Yes
Permitted: Yes
Wet space: No
Addition: No
Conversion: No

8 Floor 1 - Bedroom

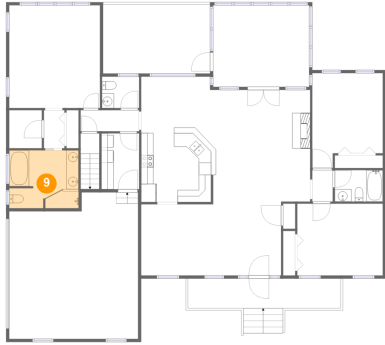


Dimensions: 13'11" x 11'8"
Area: 162 sq. ft
Counted as living area: Yes

Heated: Yes
Finished: Yes
Enclosed: Yes
Contiguous: Yes
Permitted: Yes
Wet space: No
Addition: No
Conversion: No

112 Pointe O Woods Drive, Huddleston, Bedford County, Virginia, United States, 24104

9 Floor 1 - Primary Bath



Dimensions: 11'3" x 9'5"
Area: 104 sq. ft
Counted as living area: Yes

Heated: Yes
Finished: Yes
Enclosed: Yes
Contiguous: Yes
Permitted: Yes
Wet space: Yes
Addition: No
Conversion: No

10 Floor 1 - Hall



Dimensions: 3'4" x 5'1"
Area: 17 sq. ft
Counted as living area: Yes

Heated: Yes
Finished: Yes
Enclosed: Yes
Contiguous: Yes
Permitted: Yes
Wet space: No
Addition: No
Conversion: No

11 Floor 1 - Hall

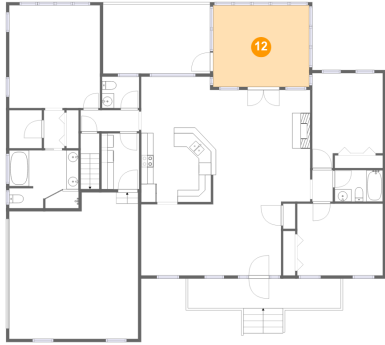


Dimensions: 9'6" x 3'5"
Area: 33 sq. ft
Counted as living area: Yes

Heated: Yes
Finished: Yes
Enclosed: Yes
Contiguous: Yes
Permitted: Yes
Wet space: No
Addition: No
Conversion: No

112 Pointe O Woods Drive, Huddleston, Bedford County, Virginia, United States, 24104

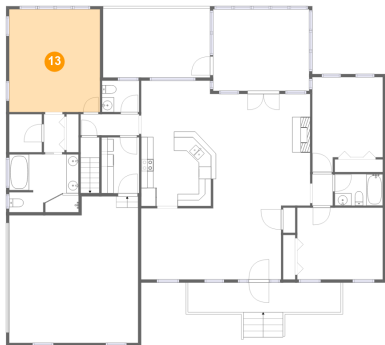
12 Floor 1 - Screened Porch



Dimensions: 15'7" x 13'3"
Area: 207 sq. ft
Counted as living area: No

Heated: No
Finished: Yes
Enclosed: No
Contiguous: Yes
Permitted: Yes
Wet space: No
Addition: No
Conversion: No

13 Floor 1 - Primary Bedroom



Dimensions: 14'9" x 16'8"
Area: 247 sq. ft
Counted as living area: Yes

Heated: Yes
Finished: Yes
Enclosed: Yes
Contiguous: Yes
Permitted: Yes
Wet space: No
Addition: No
Conversion: No

14 Floor 1 - WC

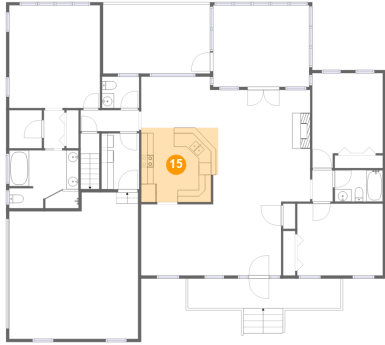


Dimensions: 6'0" x 5'1"
Area: 31 sq. ft
Counted as living area: Yes

Heated: Yes
Finished: Yes
Enclosed: Yes
Contiguous: Yes
Permitted: Yes
Wet space: Yes
Addition: No
Conversion: No

112 Pointe O Woods Drive, Huddleston, Bedford County, Virginia, United States, 24104

15 Floor 1 - Kitchen



Dimensions: 12'6" x 12'1"
Area: 146 sq. ft
Counted as living area: Yes

Heated: Yes
Finished: Yes
Enclosed: Yes
Contiguous: Yes
Permitted: Yes
Wet space: No
Addition: No
Conversion: No

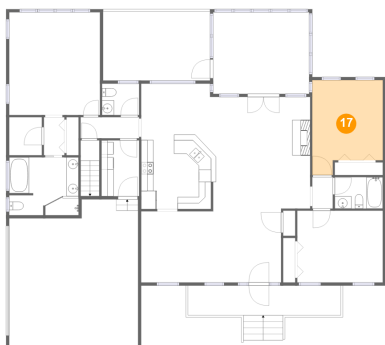
16 Floor 1 - Laundry



Dimensions: 6'2" x 9'1"
Area: 56 sq. ft
Counted as living area: Yes

Heated: Yes
Finished: Yes
Enclosed: Yes
Contiguous: Yes
Permitted: Yes
Wet space: No
Addition: No
Conversion: No

17 Floor 1 - Bedroom

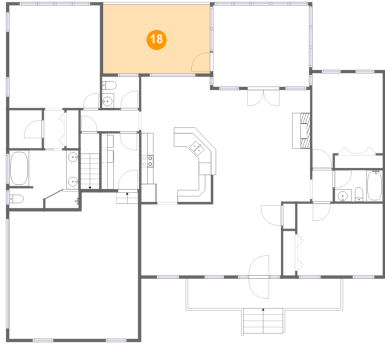


Dimensions: 11'5" x 15'5"
Area: 157 sq. ft
Counted as living area: Yes

Heated: Yes
Finished: Yes
Enclosed: Yes
Contiguous: Yes
Permitted: Yes
Wet space: No
Addition: No
Conversion: No

112 Pointe O Woods Drive, Huddleston, Bedford County, Virginia, United States, 24104

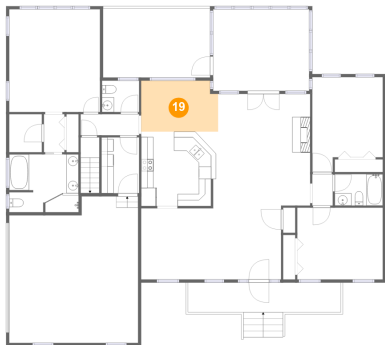
18 Floor 1 - Deck



Dimensions: 17'5" x 11'3"
Area: 196 sq. ft
Counted as living area: No

Heated: No
Finished: Yes
Enclosed: No
Contiguous: No
Permitted: Yes
Wet space: No
Addition: No
Conversion: No

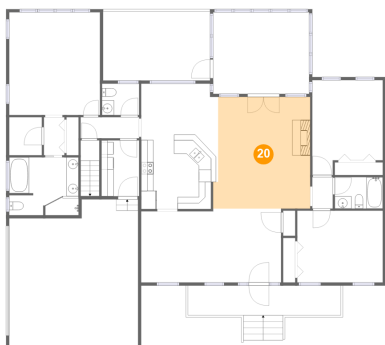
19 Floor 1 - Breakfast Nook



Dimensions: 12'6" x 8'4"
Area: 101 sq. ft
Counted as living area: Yes

Heated: Yes
Finished: Yes
Enclosed: Yes
Contiguous: Yes
Permitted: Yes
Wet space: No
Addition: No
Conversion: No

20 Floor 1 - Living Room

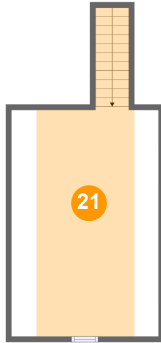


Dimensions: 15'9" x 18'2"
Area: 275 sq. ft
Counted as living area: Yes

Heated: Yes
Finished: Yes
Enclosed: Yes
Contiguous: Yes
Permitted: Yes
Wet space: No
Addition: No
Conversion: No

**112 Pointe O Woods Drive, Huddleston, Bedford
County, Virginia, United States, 24104**

21 Floor 2 - Bonus Room



Dimensions: 13'6" x 21'1"
Area: 215 sq. ft
Counted as living area: Yes

Heated: Yes
Finished: Yes
Enclosed: Yes
Contiguous: Yes
Permitted: Yes
Wet space: No
Addition: No
Conversion: No