


130 Low Country Drive, Penhook, Franklin County, Virginia, United States, 24137

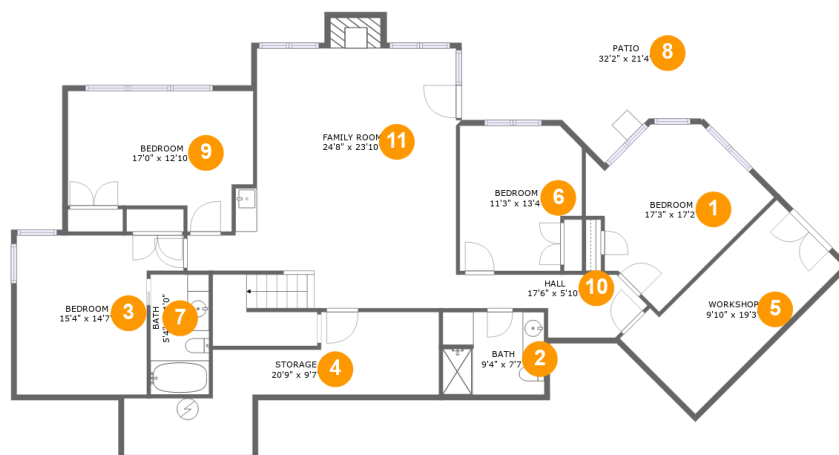


Property Summary

 **1** garages  **5** bedrooms  **4** bathrooms  **1** half baths

 **2** floors  **3,894** Gross Living Area sqft  **5,689** total sqft

130 Low Country Drive, Penhook, Franklin County, Virginia, United States, 24137



Room Dimensions

Floor 1

Total sqft: 2400

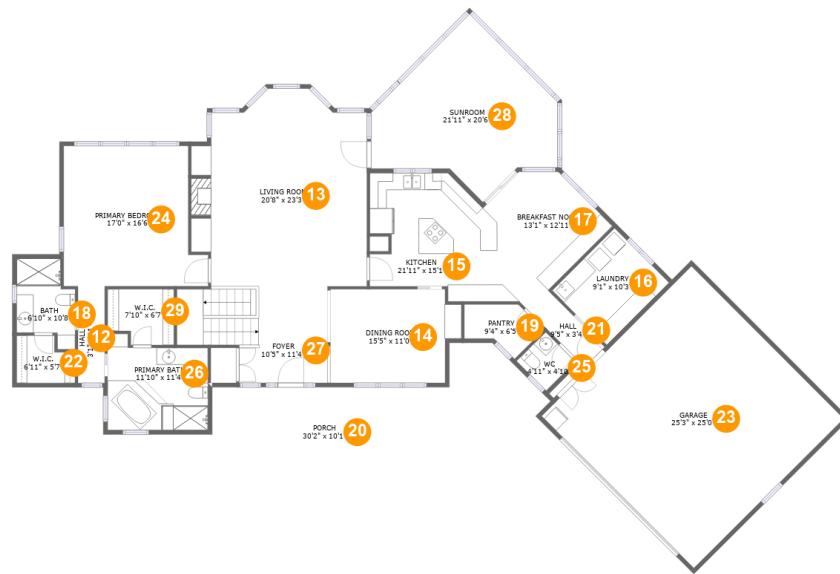
Living area: 1576

#	Room name	Dimensions	Area (sqft)	Counted as Living Area
1	Bedroom	17'3" x 17'2"	178 sq. ft	Yes
2	Bath	9'4" x 7'7"	70 sq. ft	Yes
3	Bedroom	15'4" x 14'7"	186 sq. ft	Yes
4	Storage	20'9" x 9'7"	186 sq. ft	No
5	Workshop	9'10" x 19'3"	170 sq. ft	No
6	Bedroom	11'3" x 13'4"	137 sq. ft	Yes
7	Bath	5'4" x 11'0"	59 sq. ft	Yes
8	Patio	32'2" x 21'4"	413 sq. ft	No
9	Bedroom	17'0" x 12'10"	185 sq. ft	Yes
10	Hall	17'6" x 5'10"	71 sq. ft	Yes
11	Family Room	24'8" x 23'10"	521 sq. ft	Yes

Scan captured on Wed, 14 Aug 2024 20:43:12 GMT

Information is calculated by CubiCasa technology; deemed highly reliable but not guaranteed.

130 Low Country Drive, Penhook, Franklin County, Virginia, United States, 24137



Room Dimensions

Floor 2

Total sqft: 3289

Living area: 2318

#	Room name	Dimensions	Area (sqft)	Counted as Living Area
12	Hall	3'1" x 11'4"	36 sq. ft	Yes
13	Living Room	20'8" x 23'3"	423 sq. ft	Yes
14	Dining Room	15'5" x 11'0"	158 sq. ft	Yes
15	Kitchen	21'11" x 15'1"	225 sq. ft	Yes
16	Laundry	9'1" x 10'3"	94 sq. ft	Yes
17	Breakfast Nook	13'1" x 12'11"	109 sq. ft	Yes
18	Bath	6'10" x 10'8"	58 sq. ft	Yes
19	Pantry	9'4" x 6'5"	38 sq. ft	Yes
20	Porch	30'2" x 10'1"	294 sq. ft	No
21	Hall	9'5" x 3'4"	31 sq. ft	Yes
22	W.i.c.	6'11" x 5'7"	34 sq. ft	Yes

Scan captured on Wed, 14 Aug 2024 20:43:12 GMT

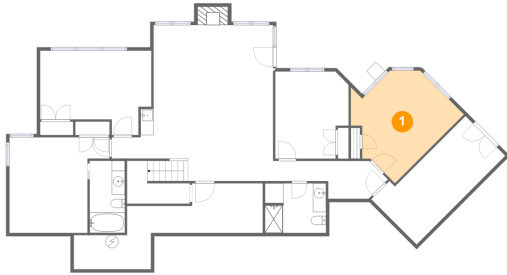
Information is calculated by CubiCasa technology; deemed highly reliable but not guaranteed.

**130 Low Country Drive, Penhook, Franklin
County, Virginia, United States, 24137**

#	Room name	Dimensions	Area (sqft)	Counted as Living Area
23	Garage	25'3" x 25'0"	629 sq. ft	No
24	Primary Bedroom	17'0" x 16'6"	250 sq. ft	Yes
25	Wc	4'11" x 4'10"	24 sq. ft	Yes
26	Primary Bath	11'10" x 11'4"	118 sq. ft	Yes
27	Foyer	10'5" x 11'4"	167 sq. ft	Yes
28	Sunroom	21'11" x 20'6"	292 sq. ft	Yes
29	W.i.c.	7'10" x 6'7"	47 sq. ft	Yes

130 Low Country Drive, Penhook, Franklin County, Virginia, United States, 24137

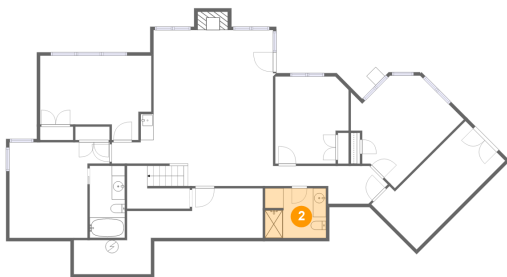
1 Floor 1 - Bedroom



Dimensions: 17'3" x 17'2"
Area: 178 sq. ft
Counted as Living Area:
Yes

Heated: Yes
Finished: Yes
Enclosed: Yes
Contiguous:
Yes
Permitted: Yes
Wet Space: No
Addition: No
Conversion: No

2 Floor 1 - Bath

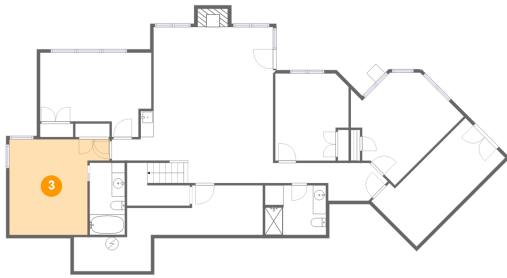


Dimensions: 9'4" x 7'7"
Area: 70 sq. ft
Counted as Living Area:
Yes

Heated: Yes
Finished: Yes
Enclosed: Yes
Contiguous:
Yes
Permitted: Yes
Wet Space: Yes
Addition: No
Conversion: No

130 Low Country Drive, Penhook, Franklin County, Virginia, United States, 24137

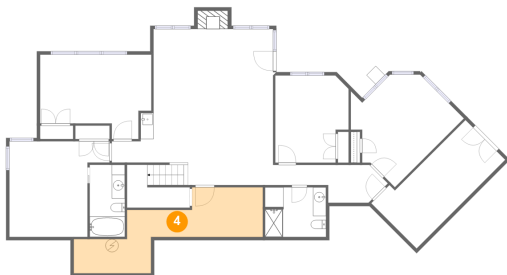
3 Floor 1 - Bedroom



Dimensions: 15'4" x 14'7"
Area: 186 sq. ft
Counted as Living Area: Yes

Heated: Yes
Finished: Yes
Enclosed: Yes
Contiguous: Yes
Permitted: Yes
Wet Space: No
Addition: No
Conversion: No

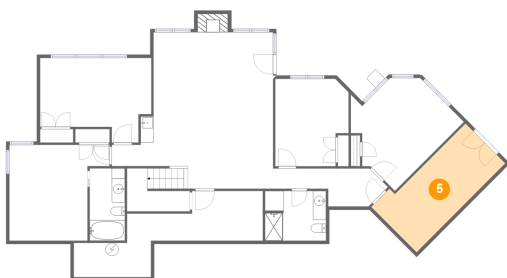
4 Floor 1 - Storage



Dimensions: 20'9" x 9'7"
Area: 186 sq. ft
Counted as Living Area: No

Heated: No
Finished: No
Enclosed: No
Contiguous: Yes
Permitted: Yes
Wet Space: No
Addition: No
Conversion: No

5 Floor 1 - Workshop

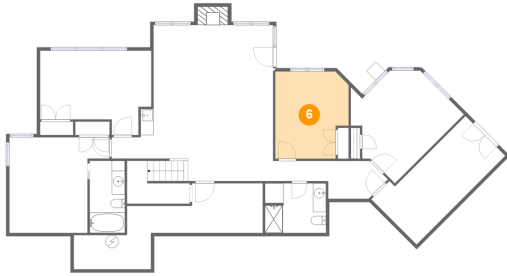


Dimensions: 9'10" x 19'3"
Area: 170 sq. ft
Counted as Living Area: No

Heated: No
Finished: No
Enclosed: Yes
Contiguous: Yes
Permitted: Yes
Wet Space: No
Addition: No
Conversion: No

130 Low Country Drive, Penhook, Franklin County, Virginia, United States, 24137

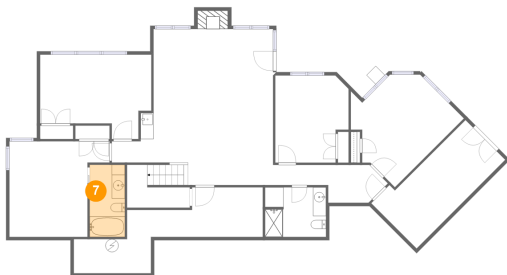
6 Floor 1 - Bedroom



Dimensions: 11'3" x 13'4"
Area: 137 sq. ft
Counted as Living Area:
Yes

Heated: Yes
Finished: Yes
Enclosed: Yes
Contiguous:
Yes
Permitted: Yes
Wet Space: No
Addition: No
Conversion: No

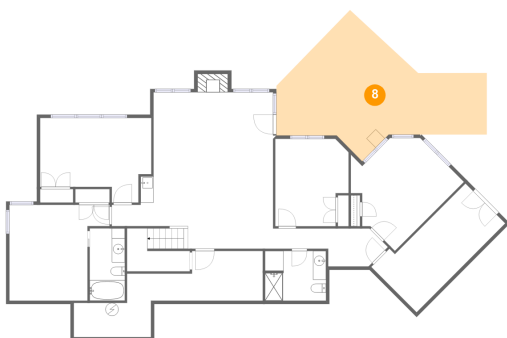
7 Floor 1 - Bath



Dimensions: 5'4" x 11'0"
Area: 59 sq. ft
Counted as Living Area:
Yes

Heated: Yes
Finished: Yes
Enclosed: Yes
Contiguous:
Yes
Permitted: Yes
Wet Space: Yes
Addition: No
Conversion: No

8 Floor 1 - Patio

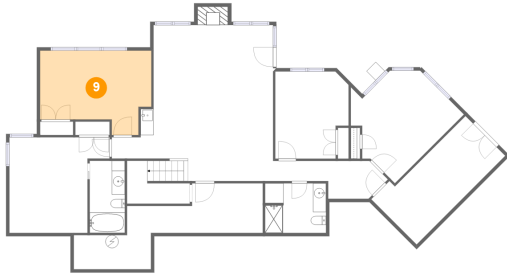


Dimensions: 32'2" x 21'4"
Area: 413 sq. ft
Counted as Living Area: No

Heated: No
Finished: Yes
Enclosed: No
Contiguous: Yes
Permitted: Yes
Wet Space: No
Addition: No
Conversion: No

130 Low Country Drive, Penhook, Franklin County, Virginia, United States, 24137

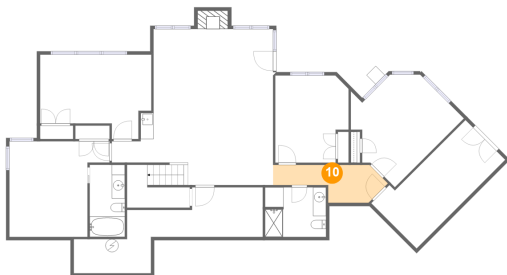
9 Floor 1 - Bedroom



Dimensions: 17'0" x 12'10"
Area: 185 sq. ft
Counted as Living Area:
Yes

Heated: Yes
Finished: Yes
Enclosed: Yes
Contiguous:
Yes
Permitted: Yes
Wet Space: No
Addition: No
Conversion: No

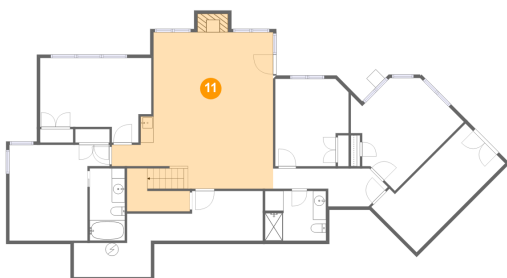
10 Floor 1 - Hall



Dimensions: 17'6" x 5'10"
Area: 71 sq. ft
Counted as Living Area:
Yes

Heated: Yes
Finished: Yes
Enclosed: Yes
Contiguous:
Yes
Permitted: Yes
Wet Space: No
Addition: No
Conversion: No

11 Floor 1 - Family Room

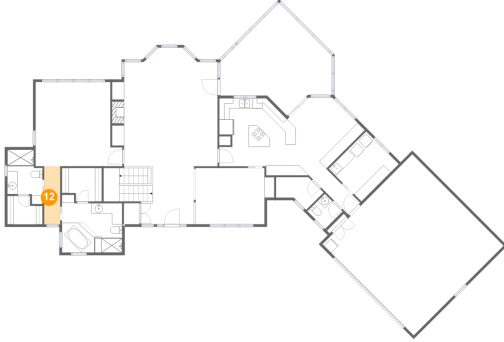


Dimensions: 24'8" x 23'10"
Area: 521 sq. ft
Counted as Living Area:
Yes

Heated: Yes
Finished: Yes
Enclosed: Yes
Contiguous:
Yes
Permitted: Yes
Wet Space: No
Addition: No
Conversion: No

130 Low Country Drive, Penhook, Franklin County, Virginia, United States, 24137

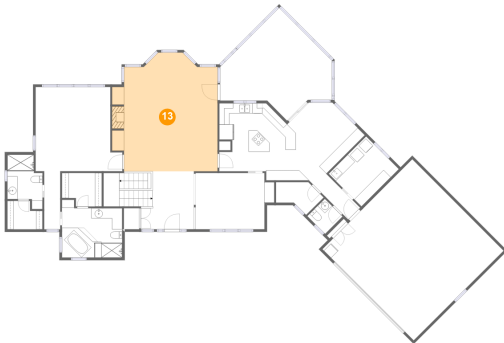
12 Floor 2 - Hall



Dimensions: 3'1" x 11'4"
Area: 36 sq. ft
Counted as Living Area:
Yes

Heated: Yes
Finished: Yes
Enclosed: Yes
Contiguous:
Yes
Permitted: Yes
Wet Space: No
Addition: No
Conversion: No

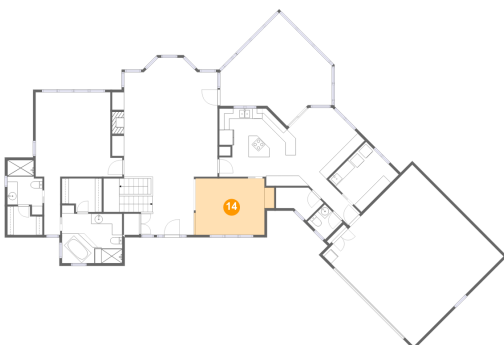
13 Floor 2 - Living Room



Dimensions: 20'8" x 23'3"
Area: 423 sq. ft
Counted as Living Area:
Yes

Heated: Yes
Finished: Yes
Enclosed: Yes
Contiguous:
Yes
Permitted: Yes
Wet Space: No
Addition: No
Conversion: No

14 Floor 2 - Dining Room

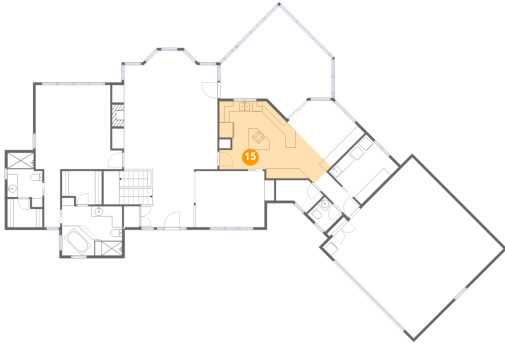


Dimensions: 15'5" x 11'0"
Area: 158 sq. ft
Counted as Living Area:
Yes

Heated: Yes
Finished: Yes
Enclosed: Yes
Contiguous:
Yes
Permitted: Yes
Wet Space: No
Addition: No
Conversion: No

130 Low Country Drive, Penhook, Franklin County, Virginia, United States, 24137

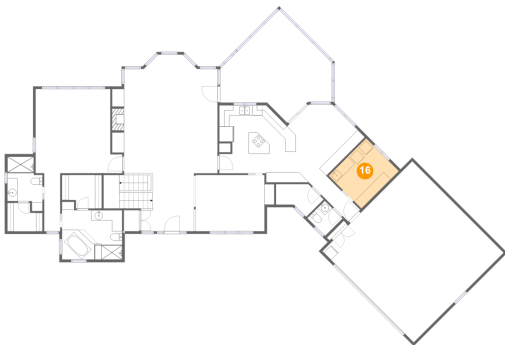
15 Floor 2 - Kitchen



Dimensions: 21'11" x 15'1"
Area: 225 sq. ft
Counted as Living Area:
Yes

Heated: Yes
Finished: Yes
Enclosed: Yes
Contiguous:
Yes
Permitted: Yes
Wet Space: No
Addition: No
Conversion: No

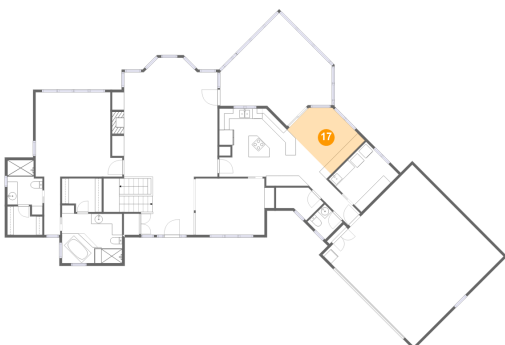
16 Floor 2 - Laundry



Dimensions: 9'1" x 10'3"
Area: 94 sq. ft
Counted as Living Area:
Yes

Heated: Yes
Finished: Yes
Enclosed: Yes
Contiguous:
Yes
Permitted: Yes
Wet Space: No
Addition: No
Conversion: No

17 Floor 2 - Breakfast Nook

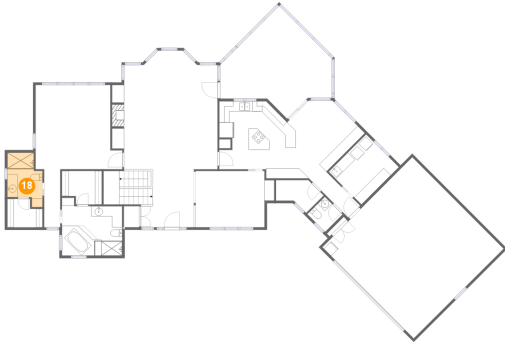


Dimensions: 13'1" x 12'11"
Area: 109 sq. ft
Counted as Living Area:
Yes

Heated: Yes
Finished: Yes
Enclosed: Yes
Contiguous:
Yes
Permitted: Yes
Wet Space: No
Addition: No
Conversion: No

130 Low Country Drive, Penhook, Franklin County, Virginia, United States, 24137

18 Floor 2 - Bath



Dimensions: 6'10" x 10'8"
Area: 58 sq. ft
Counted as Living Area:
Yes

Heated: Yes
Finished: Yes
Enclosed: Yes
Contiguous:
Yes
Permitted: Yes
Wet Space: Yes
Addition: No
Conversion: No

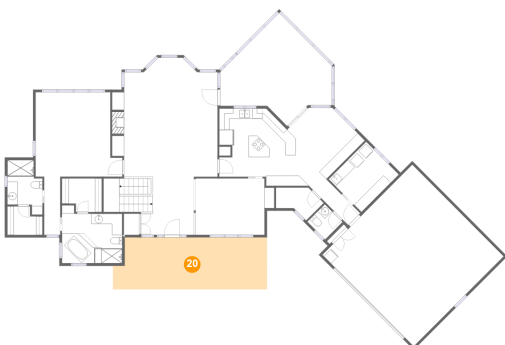
19 Floor 2 - Pantry



Dimensions: 9'4" x 6'5"
Area: 38 sq. ft
Counted as Living Area:
Yes

Heated: Yes
Finished: Yes
Enclosed: Yes
Contiguous:
Yes
Permitted: Yes
Wet Space: No
Addition: No
Conversion: No

20 Floor 2 - Porch

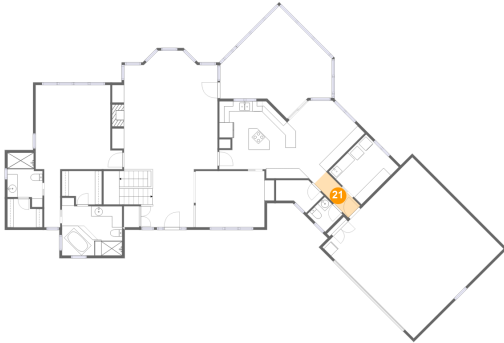


Dimensions: 30'2" x 10'1"
Area: 294 sq. ft
Counted as Living Area: No

Heated: No
Finished: Yes
Enclosed: No
Contiguous: Yes
Permitted: Yes
Wet Space: No
Addition: No
Conversion: No

130 Low Country Drive, Penhook, Franklin County, Virginia, United States, 24137

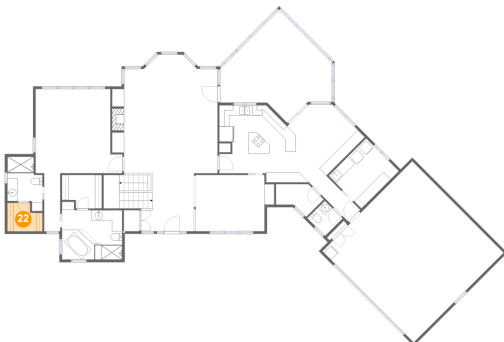
21 Floor 2 - Hall



Dimensions: 9'5" x 3'4"
Area: 31 sq. ft
Counted as Living Area:
Yes

Heated: Yes
Finished: Yes
Enclosed: Yes
Contiguous:
Yes
Permitted: Yes
Wet Space: No
Addition: No
Conversion: No

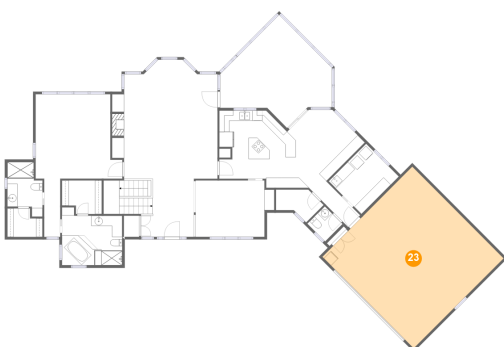
22 Floor 2 - W.i.c.



Dimensions: 6'11" x 5'7"
Area: 34 sq. ft
Counted as Living Area:
Yes

Heated: Yes
Finished: Yes
Enclosed: Yes
Contiguous:
Yes
Permitted: Yes
Wet Space: No
Addition: No
Conversion: No

23 Floor 2 - Garage

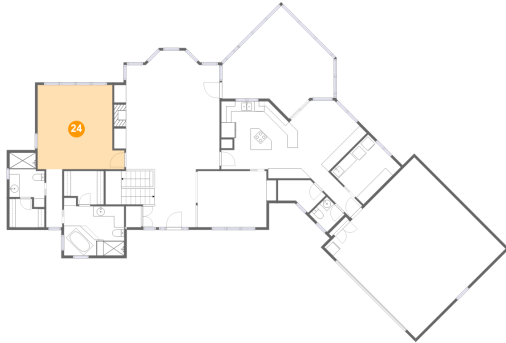


Dimensions: 25'3" x 25'0"
Area: 629 sq. ft
Counted as Living Area: No

Heated: No
Finished: No
Enclosed: Yes
Contiguous: Yes
Permitted: Yes
Wet Space: No
Addition: No
Conversion: No

130 Low Country Drive, Penhook, Franklin County, Virginia, United States, 24137

24 Floor 2 - Primary Bedroom



Dimensions: 17'0" x 16'6"
Area: 250 sq. ft
Counted as Living Area:
Yes

Heated: Yes
Finished: Yes
Enclosed: Yes
Contiguous:
Yes
Permitted: Yes
Wet Space: No
Addition: No
Conversion: No

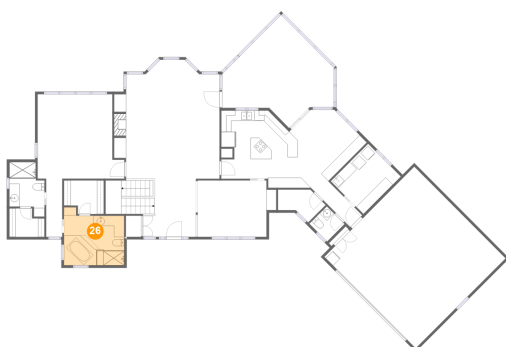
25 Floor 2 - Wc



Dimensions: 4'11" x 4'10"
Area: 24 sq. ft
Counted as Living Area:
Yes

Heated: Yes
Finished: Yes
Enclosed: Yes
Contiguous:
Yes
Permitted: Yes
Wet Space: Yes
Addition: No
Conversion: No

26 Floor 2 - Primary Bath



Dimensions: 11'10" x 11'4"
Area: 118 sq. ft
Counted as Living Area:
Yes

Heated: Yes
Finished: Yes
Enclosed: Yes
Contiguous:
Yes
Permitted: Yes
Wet Space: Yes
Addition: No
Conversion: No

130 Low Country Drive, Penhook, Franklin County, Virginia, United States, 24137

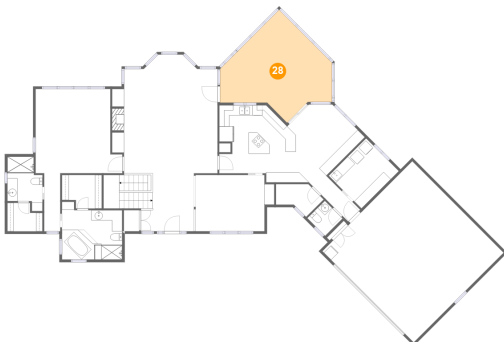
27 Floor 2 - Foyer



Dimensions: 10'5" x 11'4"
Area: 167 sq. ft
Counted as Living Area:
Yes

Heated: Yes
Finished: Yes
Enclosed: Yes
Contiguous:
Yes
Permitted: Yes
Wet Space: No
Addition: No
Conversion: No

28 Floor 2 - Sunroom



Dimensions: 21'11" x 20'6"
Area: 292 sq. ft
Counted as Living Area:
Yes

Heated: Yes
Finished: Yes
Enclosed: Yes
Contiguous:
Yes
Permitted: Yes
Wet Space: No
Addition: No
Conversion: No

29 Floor 2 - W.i.c.



Dimensions: 7'10" x 6'7"
Area: 47 sq. ft
Counted as Living Area:
Yes

Heated: Yes
Finished: Yes
Enclosed: Yes
Contiguous:
Yes
Permitted: Yes
Wet Space: No
Addition: No
Conversion: No