



Home report


4210 Hannah Belle Way, Cave Spring, Roanoke, Roanoke County, Virginia, United States, 24018





Property summary


 **1** Garages


 **3** Bedrooms

 **2** Bathrooms

 **1** Half baths

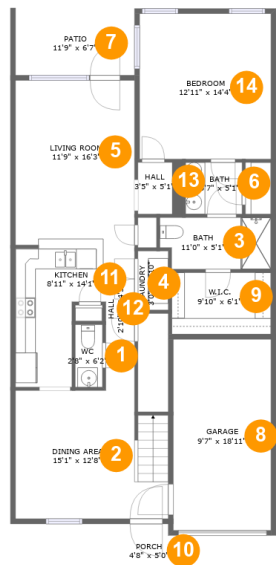
 **2** Floors

 **1,754** Gross living area sqft

 **2,366** Total sqft

Home report

4210 Hannah Belle Way, Cave Spring, Roanoke, Roanoke County, Virginia, United States, 24018



Room dimensions

Floor 1 Total sqft: 1348 Living area: 1054

| #  |             | Max Dimensions | sqft       | Included |
|----|-------------|----------------|------------|----------|
| 1  | WC          | 2'8" x 6'2"    | 17 sq. ft  | Yes      |
| 2  | Dining Area | 15'1" x 12'8"  | 183 sq. ft | Yes      |
| 3  | Bath        | 11'0" x 5'1"   | 54 sq. ft  | Yes      |
| 4  | Laundry     | 3'0" x 5'10"   | 18 sq. ft  | Yes      |
| 5  | Living Room | 11'9" x 16'3"  | 192 sq. ft | Yes      |
| 6  | Bath        | 5'7" x 5'1"    | 29 sq. ft  | Yes      |
| 7  | Patio       | 11'9" x 6'7"   | 78 sq. ft  | No       |
| 8  | Garage      | 9'7" x 18'11"  | 182 sq. ft | No       |
| 9  | W.I.C.      | 9'10" x 6'1"   | 60 sq. ft  | Yes      |
| 10 | Porch       | 4'8" x 5'0"    | 23 sq. ft  | No       |
| 11 | Kitchen     | 8'11" x 14'1"  | 96 sq. ft  | Yes      |

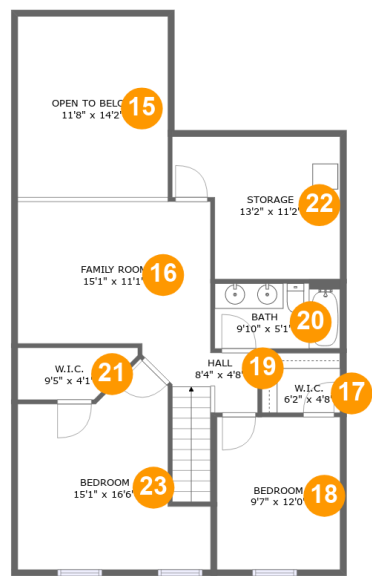
Home report

4210 Hannah Belle Way, Cave Spring, Roanoke, Roanoke  
County, Virginia, United States, 24018

| #  |         | Max Dimensions | sqft       | Included |
|----|---------|----------------|------------|----------|
| 12 | Hall    | 2'10" x 14'5"  | 41 sq. ft  | Yes      |
| 13 | Hall    | 3'5" x 5'1"    | 22 sq. ft  | Yes      |
| 14 | Bedroom | 12'11" x 14'4" | 187 sq. ft | Yes      |

Home report

4210 Hannah Belle Way, Cave Spring, Roanoke, Roanoke County, Virginia, United States, 24018



Room dimensions

Floor 2 Total sqft: 1018 Living area: 700

| #  |               | Max Dimensions | sqft       | Included |
|----|---------------|----------------|------------|----------|
| 15 | Open To Below | 11'8" x 14'2"  | 167 sq. ft | No       |
| 16 | Family Room   | 15'1" x 11'1"  | 172 sq. ft | Yes      |
| 17 | W.I.C.        | 6'2" x 4'8"    | 29 sq. ft  | Yes      |
| 18 | Bedroom       | 9'7" x 12'0"   | 115 sq. ft | Yes      |
| 19 | Hall          | 8'4" x 4'8"    | 59 sq. ft  | Yes      |
| 20 | Bath          | 9'10" x 5'1"   | 50 sq. ft  | Yes      |
| 21 | W.I.C.        | 9'5" x 4'1"    | 32 sq. ft  | Yes      |
| 22 | Storage       | 13'2" x 11'2"  | 125 sq. ft | No       |
| 23 | Bedroom       | 15'1" x 16'6"  | 181 sq. ft | Yes      |

4210 Hannah Belle Way, Cave Spring, Roanoke, Roanoke  
County, Virginia, United States, 24018

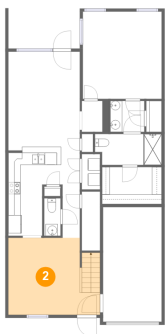
1 Floor 1 - WC



Max Dimensions: 2'8" x 6'2"  
Calculated Area: 17 sq. ft  
Included: Yes

Heated: Yes  
Finished: Yes  
Enclosed: Yes  
Contiguous: Yes  
Permitted: Yes  
Wet space: Yes  
Addition: No  
Conversion: No

2 Floor 1 - Dining Area



Max Dimensions: 15'1" x 12'8"  
Calculated Area: 183 sq. ft  
Included: Yes

Heated: Yes  
Finished: Yes  
Enclosed: Yes  
Contiguous: Yes  
Permitted: Yes  
Wet space: No  
Addition: No  
Conversion: No

4210 Hannah Belle Way, Cave Spring, Roanoke, Roanoke  
County, Virginia, United States, 24018

3 Floor 1 - Bath



Max Dimensions: 11'0" x 5'1"  
Calculated Area: 54 sq. ft  
Included: Yes

Heated: Yes  
Finished: Yes  
Enclosed: Yes  
Contiguous: Yes  
Permitted: Yes  
Wet space: Yes  
Addition: No  
Conversion: No

4 Floor 1 - Laundry



Max Dimensions: 3'0" x 5'10"  
Calculated Area: 18 sq. ft  
Included: Yes

Heated: Yes  
Finished: Yes  
Enclosed: Yes  
Contiguous: Yes  
Permitted: Yes  
Wet space: No  
Addition: No  
Conversion: No

5 Floor 1 - Living Room



Max Dimensions: 11'9" x 16'3"  
Calculated Area: 192 sq. ft  
Included: Yes

Heated: Yes  
Finished: Yes  
Enclosed: Yes  
Contiguous: Yes  
Permitted: Yes  
Wet space: No  
Addition: No  
Conversion: No

4210 Hannah Belle Way, Cave Spring, Roanoke, Roanoke  
County, Virginia, United States, 24018

6 Floor 1 - Bath



Max Dimensions: 5'7" x 5'1"  
Calculated Area: 29 sq. ft  
Included: Yes

Heated: Yes  
Finished: Yes  
Enclosed: Yes  
Contiguous: Yes  
Permitted: Yes  
Wet space: Yes  
Addition: No  
Conversion: No

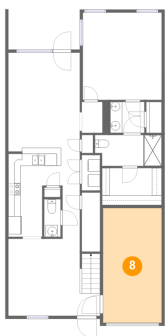
7 Floor 1 - Patio



Max Dimensions: 11'9" x 6'7"  
Calculated Area: 78 sq. ft  
Included: No

Heated: No  
Finished: Yes  
Enclosed: No  
Contiguous: Yes  
Permitted: Yes  
Wet space: No  
Addition: No  
Conversion: No

8 Floor 1 - Garage



Max Dimensions: 9'7" x 18'11"  
Calculated Area: 182 sq. ft  
Included: No

Heated: No  
Finished: No  
Enclosed: Yes  
Contiguous: Yes  
Permitted: Yes  
Wet space: No  
Addition: No  
Conversion: No

4210 Hannah Belle Way, Cave Spring, Roanoke, Roanoke  
County, Virginia, United States, 24018

9 Floor 1 - W.I.C.



Max Dimensions: 9'10" x 6'1"  
Calculated Area: 60 sq. ft  
Included: Yes

Heated: Yes  
Finished: Yes  
Enclosed: Yes  
Contiguous: Yes  
Permitted: Yes  
Wet space: No  
Addition: No  
Conversion: No

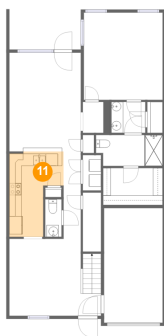
10 Floor 1 - Porch



Max Dimensions: 4'8" x 5'0"  
Calculated Area: 23 sq. ft  
Included: No

Heated: No  
Finished: Yes  
Enclosed: No  
Contiguous: Yes  
Permitted: Yes  
Wet space: No  
Addition: No  
Conversion: No

11 Floor 1 - Kitchen



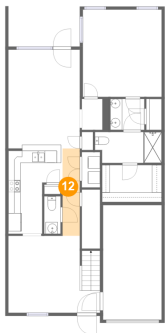
Max Dimensions: 8'11" x 14'1"  
Calculated Area: 96 sq. ft  
Included: Yes

Heated: Yes  
Finished: Yes  
Enclosed: Yes  
Contiguous: Yes  
Permitted: Yes  
Wet space: No  
Addition: No  
Conversion: No



4210 Hannah Belle Way, Cave Spring, Roanoke, Roanoke  
County, Virginia, United States, 24018

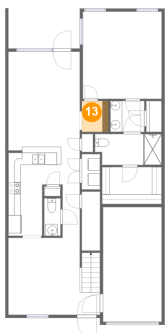
12 Floor 1 - Hall



Max Dimensions: 2'10" x 14'5"  
Calculated Area: 41 sq. ft  
Included: Yes

Heated: Yes  
Finished: Yes  
Enclosed: Yes  
Contiguous: Yes  
Permitted: Yes  
Wet space: No  
Addition: No  
Conversion: No

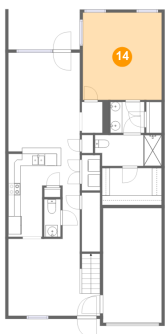
13 Floor 1 - Hall



Max Dimensions: 3'5" x 5'1"  
Calculated Area: 22 sq. ft  
Included: Yes

Heated: Yes  
Finished: Yes  
Enclosed: Yes  
Contiguous: Yes  
Permitted: Yes  
Wet space: No  
Addition: No  
Conversion: No

14 Floor 1 - Bedroom

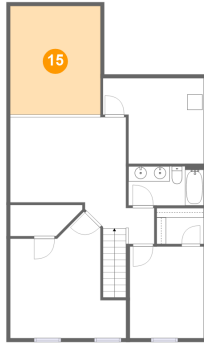


Max Dimensions: 12'11" x 14'4"  
Calculated Area: 187 sq. ft  
Included: Yes

Heated: Yes  
Finished: Yes  
Enclosed: Yes  
Contiguous: Yes  
Permitted: Yes  
Wet space: No  
Addition: No  
Conversion: No

4210 Hannah Belle Way, Cave Spring, Roanoke, Roanoke  
County, Virginia, United States, 24018

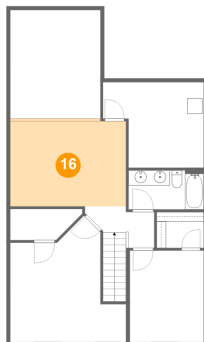
## 15 Floor 2 - Open To Below



Max Dimensions: 11'8" x 14'2"  
Calculated Area: 167 sq. ft  
Included: No

Heated: No  
Finished: No  
Enclosed: No  
Contiguous: Yes  
Permitted: No  
Wet space: No  
Addition: No  
Conversion: No

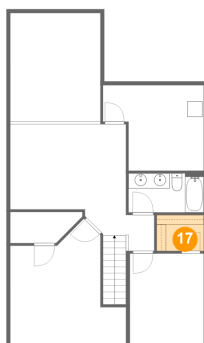
## 16 Floor 2 - Family Room



Max Dimensions: 15'1" x 11'1"  
Calculated Area: 172 sq. ft  
Included: Yes

Heated: Yes  
Finished: Yes  
Enclosed: Yes  
Contiguous: Yes  
Permitted: Yes  
Wet space: No  
Addition: No  
Conversion: No

## 17 Floor 2 - W.I.C.

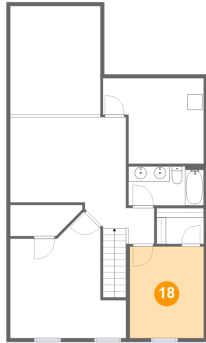


Max Dimensions: 6'2" x 4'8"  
Calculated Area: 29 sq. ft  
Included: Yes

Heated: Yes  
Finished: Yes  
Enclosed: Yes  
Contiguous: Yes  
Permitted: Yes  
Wet space: No  
Addition: No  
Conversion: No

4210 Hannah Belle Way, Cave Spring, Roanoke, Roanoke  
County, Virginia, United States, 24018

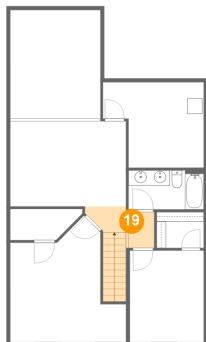
## 18 Floor 2 - Bedroom



Max Dimensions: 9'7" x 12'0"  
Calculated Area: 115 sq. ft  
Included: Yes

Heated: Yes  
Finished: Yes  
Enclosed: Yes  
Contiguous: Yes  
Permitted: Yes  
Wet space: No  
Addition: No  
Conversion: No

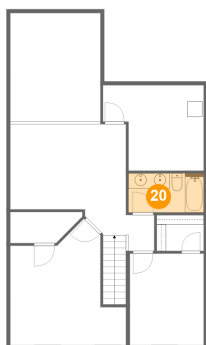
## 19 Floor 2 - Hall



Max Dimensions: 8'4" x 4'8"  
Calculated Area: 59 sq. ft  
Included: Yes

Heated: Yes  
Finished: Yes  
Enclosed: Yes  
Contiguous: Yes  
Permitted: Yes  
Wet space: No  
Addition: No  
Conversion: No

## 20 Floor 2 - Bath

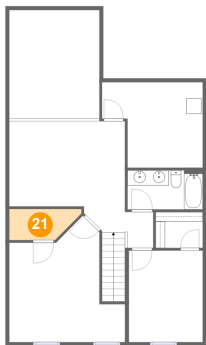


Max Dimensions: 9'10" x 5'1"  
Calculated Area: 50 sq. ft  
Included: Yes

Heated: Yes  
Finished: Yes  
Enclosed: Yes  
Contiguous: Yes  
Permitted: Yes  
Wet space: Yes  
Addition: No  
Conversion: No

4210 Hannah Belle Way, Cave Spring, Roanoke, Roanoke  
County, Virginia, United States, 24018

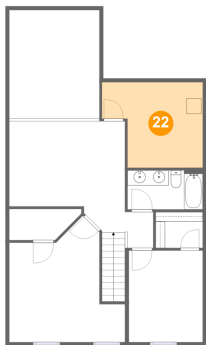
21 Floor 2 - W.I.C.



Max Dimensions: 9'5" x 4'1"  
Calculated Area: 32 sq. ft  
Included: Yes

Heated: Yes  
Finished: Yes  
Enclosed: Yes  
Contiguous: Yes  
Permitted: Yes  
Wet space: No  
Addition: No  
Conversion: No

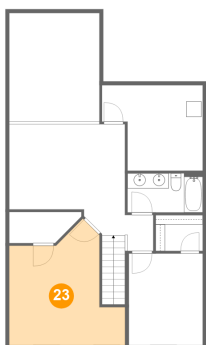
22 Floor 2 - Storage



Max Dimensions: 13'2" x 11'2"  
Calculated Area: 125 sq. ft  
Included: No

Heated: No  
Finished: No  
Enclosed: No  
Contiguous: Yes  
Permitted: Yes  
Wet space: No  
Addition: No  
Conversion: No

23 Floor 2 - Bedroom



Max Dimensions: 15'1" x 16'6"  
Calculated Area: 181 sq. ft  
Included: Yes

Heated: Yes  
Finished: Yes  
Enclosed: Yes  
Contiguous: Yes  
Permitted: Yes  
Wet space: No  
Addition: No  
Conversion: No