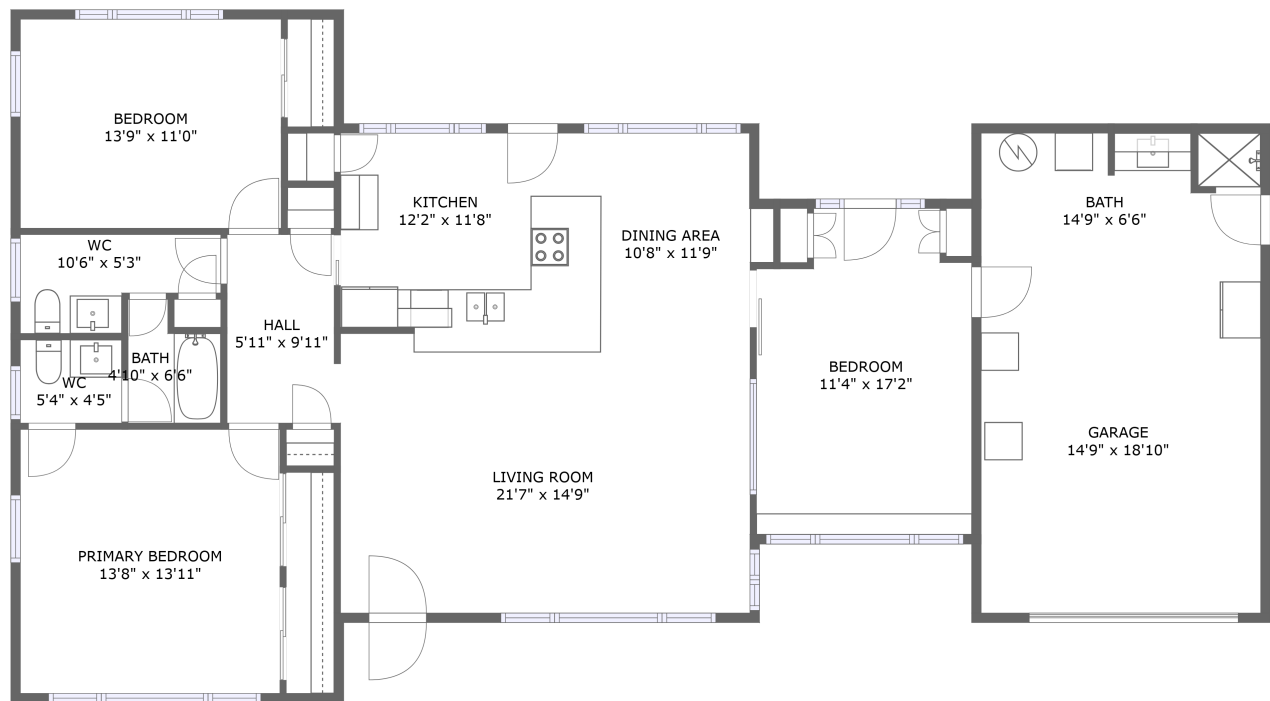




7909 Garden Drive North, Jungle Prada, St.
Petersburg, Pinellas County, Florida, United States,





FLOOR 1


Property summary


 **1** Garages


 **3** Bedrooms

 **1** Bathrooms

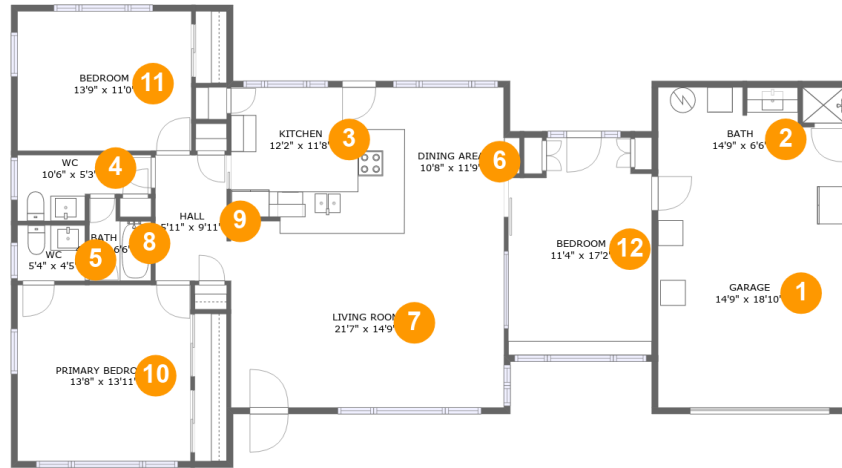
 **1** Half baths

 **1** Floors

 **1,429** Gross living area sqft

 **1,833** Total sqft

7909 Garden Drive North, Jungle Prada, St. Petersburg, Pinellas County, Florida, United States,



Room dimensions

Floor 1

Total sqft: 1833 Living area: 1429

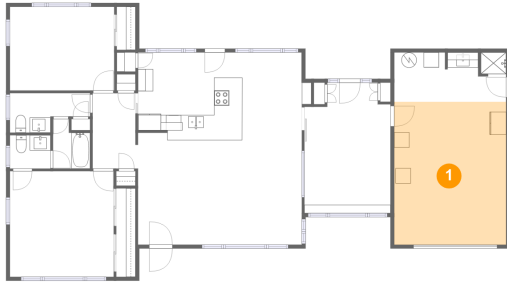
#		Dimensions	sqft	Counted as living area
1	Garage	14'9" x 18'10"	277 sq. ft	No
2	Bath	14'9" x 6'6"	93 sq. ft	No
3	Kitchen	12'2" x 11'8"	137 sq. ft	Yes
4	WC	10'6" x 5'3"	44 sq. ft	Yes
5	WC	5'4" x 4'5"	23 sq. ft	Yes
6	Dining Area	10'8" x 11'9"	114 sq. ft	Yes
7	Living Room	21'7" x 14'9"	298 sq. ft	Yes
8	Bath	4'10" x 6'6"	27 sq. ft	Yes
9	Hall	5'11" x 9'11"	57 sq. ft	Yes
10	Primary Bedroom	13'8" x 13'11"	190 sq. ft	Yes
11	Bedroom	13'9" x 11'0"	151 sq. ft	Yes

7909 Garden Drive North, Jungle Prada, St.
Petersburg, Pinellas County, Florida, United States,

#		Dimensions	sqft	Counted as living area
12	Bedroom	11'4" x 17'2"	180 sq. ft	Yes

**7909 Garden Drive North, Jungle Prada, St.
Petersburg, Pinellas County, Florida, United States,**

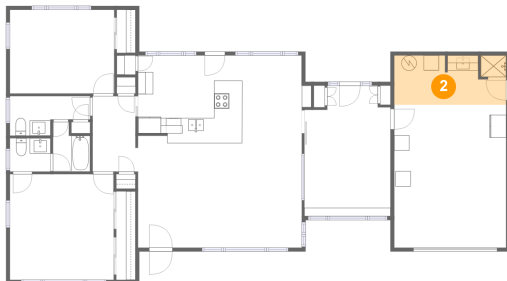
1 Floor 1 - Garage



Dimensions: 14'9" x 18'10"
Area: 277 sq. ft
Counted as living area: No

Heated: No
Finished: No
Enclosed: Yes
Contiguous: Yes
Permitted: Yes
Wet space: No
Addition: No
Conversion: No

2 Floor 1 - Bath

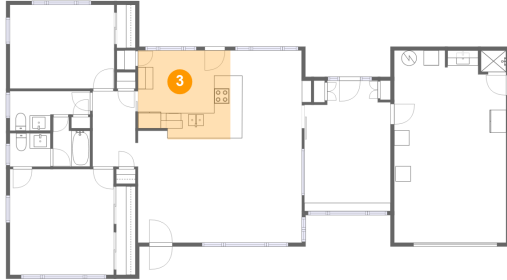


Dimensions: 14'9" x 6'6"
Area: 93 sq. ft
Counted as living area: No

Heated: Yes
Finished: Yes
Enclosed: Yes
Contiguous: No
Permitted: Yes
Wet space: Yes
Addition: No
Conversion: No

7909 Garden Drive North, Jungle Prada, St. Petersburg, Pinellas County, Florida, United States,

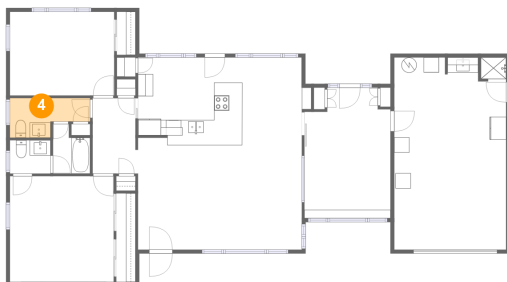
3 Floor 1 - Kitchen



Dimensions: 12'2" x 11'8"
Area: 137 sq. ft
Counted as living area: Yes

Heated: Yes
Finished: Yes
Enclosed: Yes
Contiguous: Yes
Permitted: Yes
Wet space: No
Addition: No
Conversion: No

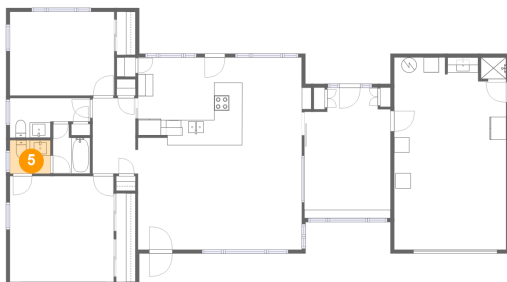
4 Floor 1 - WC



Dimensions: 10'6" x 5'3"
Area: 44 sq. ft
Counted as living area: Yes

Heated: Yes
Finished: Yes
Enclosed: Yes
Contiguous: Yes
Permitted: Yes
Wet space: Yes
Addition: No
Conversion: No

5 Floor 1 - WC

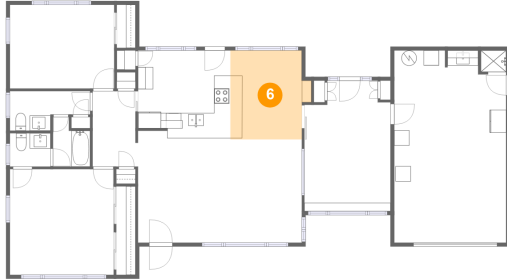


Dimensions: 5'4" x 4'5"
Area: 23 sq. ft
Counted as living area: Yes

Heated: Yes
Finished: Yes
Enclosed: Yes
Contiguous: Yes
Permitted: Yes
Wet space: Yes
Addition: No
Conversion: No

**7909 Garden Drive North, Jungle Prada, St.
Petersburg, Pinellas County, Florida, United States,**

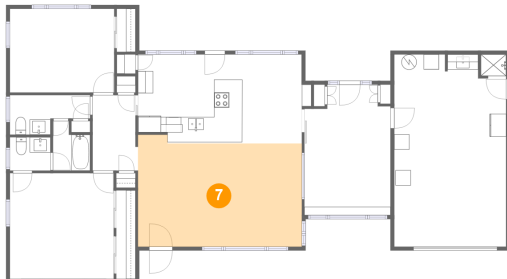
6 Floor 1 - Dining Area



Dimensions: 10'8" x 11'9"
Area: 114 sq. ft
Counted as living area: Yes

Heated: Yes
Finished: Yes
Enclosed: Yes
Contiguous: Yes
Permitted: Yes
Wet space: No
Addition: No
Conversion: No

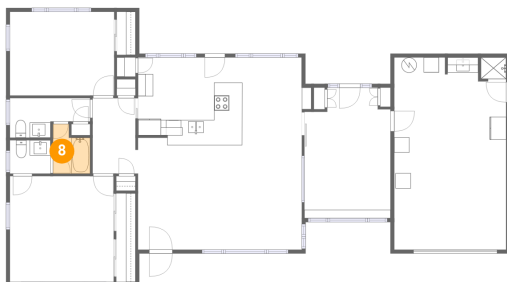
7 Floor 1 - Living Room



Dimensions: 21'7" x 14'9"
Area: 298 sq. ft
Counted as living area: Yes

Heated: Yes
Finished: Yes
Enclosed: Yes
Contiguous: Yes
Permitted: Yes
Wet space: No
Addition: No
Conversion: No

8 Floor 1 - Bath

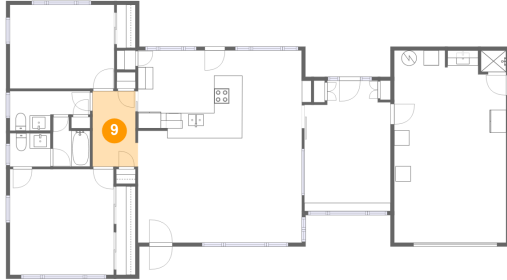


Dimensions: 4'10" x 6'6"
Area: 27 sq. ft
Counted as living area: Yes

Heated: Yes
Finished: Yes
Enclosed: Yes
Contiguous: Yes
Permitted: Yes
Wet space: Yes
Addition: No
Conversion: No

7909 Garden Drive North, Jungle Prada, St.
Petersburg, Pinellas County, Florida, United States,

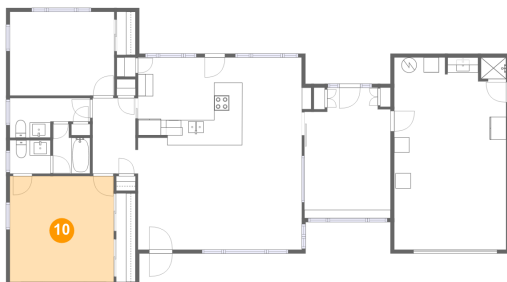
9 Floor 1 - Hall



Dimensions: 5'11" x 9'11"
Area: 57 sq. ft
Counted as living area: Yes

Heated: Yes
Finished: Yes
Enclosed: Yes
Contiguous: Yes
Permitted: Yes
Wet space: No
Addition: No
Conversion: No

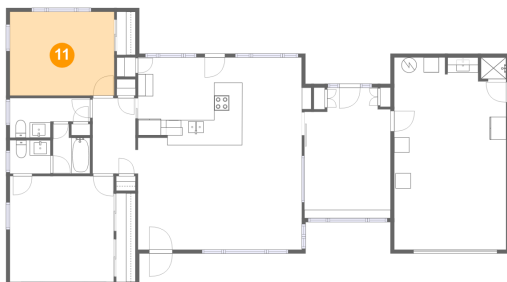
10 Floor 1 - Primary Bedroom



Dimensions: 13'8" x 13'11"
Area: 190 sq. ft
Counted as living area: Yes

Heated: Yes
Finished: Yes
Enclosed: Yes
Contiguous: Yes
Permitted: Yes
Wet space: No
Addition: No
Conversion: No

11 Floor 1 - Bedroom

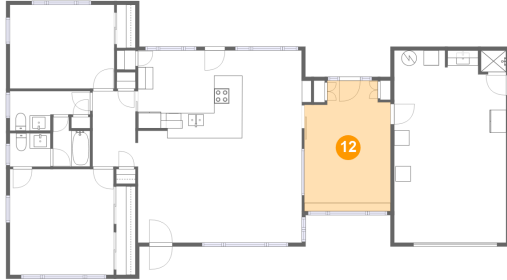


Dimensions: 13'9" x 11'0"
Area: 151 sq. ft
Counted as living area: Yes

Heated: Yes
Finished: Yes
Enclosed: Yes
Contiguous: Yes
Permitted: Yes
Wet space: No
Addition: No
Conversion: No

**7909 Garden Drive North, Jungle Prada, St.
Petersburg, Pinellas County, Florida, United States,**

12 Floor 1 - Bedroom



Dimensions: 11'4" x 17'2"
Area: 180 sq. ft
Counted as living area: Yes

Heated: Yes
Finished: Yes
Enclosed: Yes
Contiguous: Yes
Permitted: Yes
Wet space: No
Addition: No
Conversion: No