

05n874 Westwood Lane, Longview Estates, Saint Charles, Kane County, Illinois, United

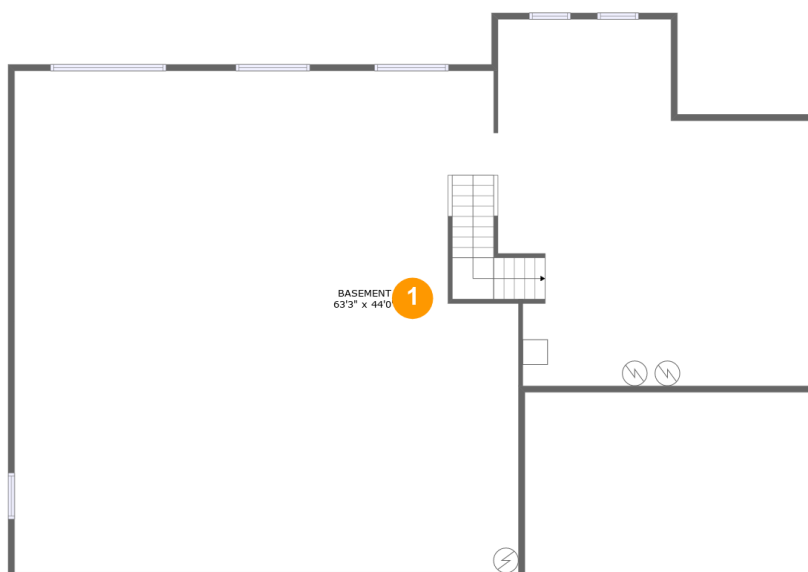


Property Summary

1 garages **4** bedrooms **3** bathrooms **1** half baths

3 floors **6,521** Gross Living Area sqft **7,686** total sqft

05n874 Westwood Lane, Longview Estates, Saint Charles, Kane County, Illinois, United



Room Dimensions

Floor 1

Total sqft: 2304

Living area: 2304

#	Room name	Dimensions	Area (sqft)	Counted as Living Area
1	Basement	63'3" x 44'0"	2187 sq. ft	Yes

05n874 Westwood Lane, Longview Estates, Saint Charles, Kane County, Illinois, United



Room Dimensions

Floor 2

Total sqft: 2994

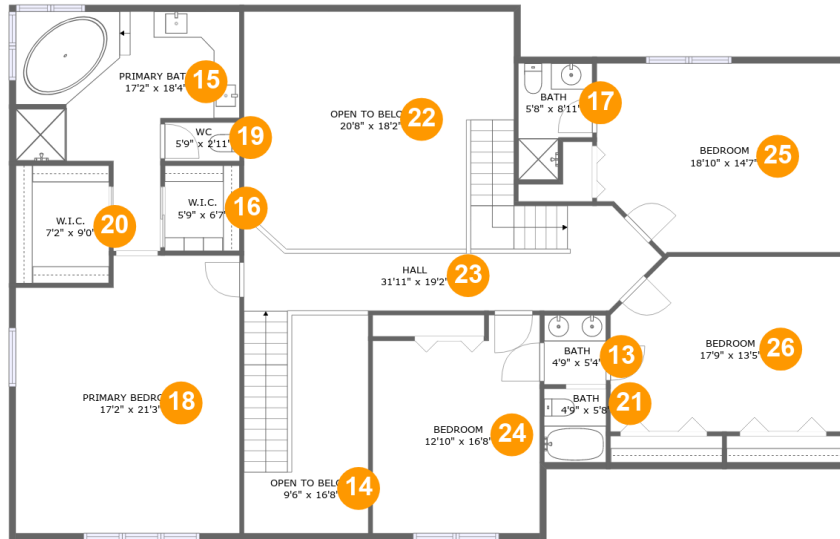
Living area: 2296

#	Room name	Dimensions	Area (sqft)	Counted as Living Area
2	Dining Room	12'11" x 17'3"	221 sq. ft	Yes
3	Foyer	9'4" x 15'3"	138 sq. ft	Yes
4	Office / Bedroom	16'11" x 17'4"	292 sq. ft	Yes
5	Wc	5'4" x 7'0"	37 sq. ft	Yes
6	Hall	32'9" x 6'10"	168 sq. ft	Yes
7	Family Room	25'1" x 18'2"	386 sq. ft	Yes
8	Kitchen	25'1" x 22'3"	450 sq. ft	Yes
9	Living Room	17'5" x 14'11"	258 sq. ft	Yes
10	Garage	22'8" x 29'4"	664 sq. ft	No
11	Closet	8'10" x 7'0"	62 sq. ft	Yes
12	Laundry	15'4" x 6'7"	89 sq. ft	Yes

Scan captured on Tue, 17 Sep 2024 17:18:13 GMT

Information is calculated by CubiCasa technology; deemed highly reliable but not guaranteed.

05n874 Westwood Lane, Longview Estates, Saint Charles, Kane County, Illinois, United



Room Dimensions

Floor 3

Total sqft: 2388

Living area: 1921

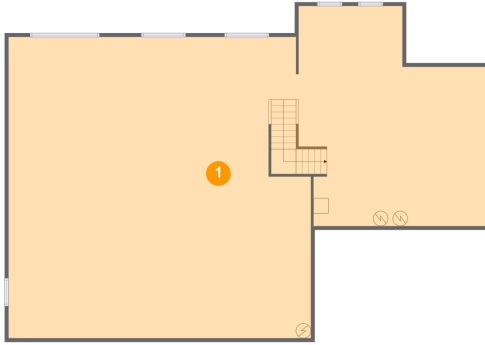
#	Room name	Dimensions	Area (sqft)	Counted as Living Area
13	Bath	4'9" x 5'4"	25 sq. ft	Yes
14	Open To Below	9'6" x 16'8"	115 sq. ft	No
15	Primary Bath	17'2" x 18'4"	200 sq. ft	Yes
16	W.i.c.	5'9" x 6'7"	38 sq. ft	Yes
17	Bath	5'8" x 8'11"	42 sq. ft	Yes
18	Primary Bedroom	17'2" x 21'3"	346 sq. ft	Yes
19	Wc	5'9" x 2'11"	17 sq. ft	Yes
20	W.i.c.	7'2" x 9'0"	64 sq. ft	Yes
21	Bath	4'9" x 5'8"	27 sq. ft	Yes
22	Open To Below	20'8" x 18'2"	335 sq. ft	No
23	Hall	31'11" x 19'2"	242 sq. ft	Yes

**05n874 Westwood Lane, Longview Estates,
Saint Charles, Kane County, Illinois, United**

#	Room name	Dimensions	Area (sqft)	Counted as Living Area
24	Bedroom	12'10" x 16'8"	196 sq. ft	Yes
25	Bedroom	18'10" x 14'7"	259 sq. ft	Yes
26	Bedroom	17'9" x 13'5"	228 sq. ft	Yes

05n874 Westwood Lane, Longview Estates, Saint Charles, Kane County, Illinois, United

1 Floor 1 - Basement



Dimensions: 63'3" x 44'0"
Area: 2187 sq. ft
Counted as Living Area:
Yes

Heated: Yes
Finished: Yes
Enclosed: Yes
Contiguous:
Yes
Permitted: Yes
Wet Space: No
Addition: No
Conversion: No

2 Floor 2 - Dining Room



Dimensions: 12'11" x 17'3"
Area: 221 sq. ft
Counted as Living Area:
Yes

Heated: Yes
Finished: Yes
Enclosed: Yes
Contiguous:
Yes
Permitted: Yes
Wet Space: No
Addition: No
Conversion: No

05n874 Westwood Lane, Longview Estates, Saint Charles, Kane County, Illinois, United

3 Floor 2 - Foyer



Dimensions: 9'4" x 15'3"
Area: 138 sq. ft
Counted as Living Area:
Yes

Heated: Yes
Finished: Yes
Enclosed: Yes
Contiguous:
Yes
Permitted: Yes
Wet Space: No
Addition: No
Conversion: No

4 Floor 2 - Office / Bedroom



Dimensions: 16'11" x 17'4"
Area: 292 sq. ft
Counted as Living Area:
Yes

Heated: Yes
Finished: Yes
Enclosed: Yes
Contiguous:
Yes
Permitted: Yes
Wet Space: No
Addition: No
Conversion: No

5 Floor 2 - Wc



Dimensions: 5'4" x 7'0"
Area: 37 sq. ft
Counted as Living Area:
Yes

Heated: Yes
Finished: Yes
Enclosed: Yes
Contiguous:
Yes
Permitted: Yes
Wet Space: Yes
Addition: No
Conversion: No

05n874 Westwood Lane, Longview Estates, Saint Charles, Kane County, Illinois, United

6 Floor 2 - Hall



Dimensions: 32'9" x 6'10"
Area: 168 sq. ft
Counted as Living Area:
Yes

Heated: Yes
Finished: Yes
Enclosed: Yes
Contiguous:
Yes
Permitted: Yes
Wet Space: No
Addition: No
Conversion: No

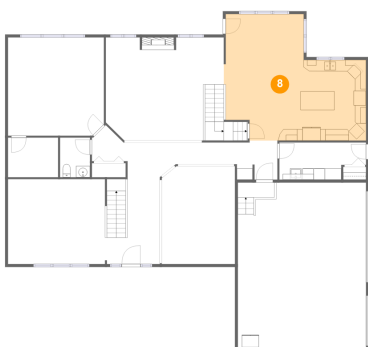
7 Floor 2 - Family Room



Dimensions: 25'1" x 18'2"
Area: 386 sq. ft
Counted as Living Area:
Yes

Heated: Yes
Finished: Yes
Enclosed: Yes
Contiguous:
Yes
Permitted: Yes
Wet Space: No
Addition: No
Conversion: No

8 Floor 2 - Kitchen

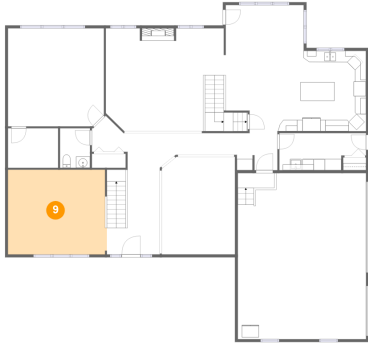


Dimensions: 25'1" x 22'3"
Area: 450 sq. ft
Counted as Living Area:
Yes

Heated: Yes
Finished: Yes
Enclosed: Yes
Contiguous:
Yes
Permitted: Yes
Wet Space: No
Addition: No
Conversion: No

05n874 Westwood Lane, Longview Estates, Saint Charles, Kane County, Illinois, United

9 Floor 2 - Living Room



Dimensions: 17'5" x 14'11"
Area: 258 sq. ft
Counted as Living Area:
Yes

Heated: Yes
Finished: Yes
Enclosed: Yes
Contiguous:
Yes
Permitted: Yes
Wet Space: No
Addition: No
Conversion: No

10 Floor 2 - Garage



Dimensions: 22'8" x 29'4"
Area: 664 sq. ft
Counted as Living Area: No

Heated: No
Finished: No
Enclosed: Yes
Contiguous: Yes
Permitted: Yes
Wet Space: No
Addition: No
Conversion: No

11 Floor 2 - Closet



Dimensions: 8'10" x 7'0"
Area: 62 sq. ft
Counted as Living Area:
Yes

Heated: Yes
Finished: Yes
Enclosed: Yes
Contiguous:
Yes
Permitted: Yes
Wet Space: No
Addition: No
Conversion: No

05n874 Westwood Lane, Longview Estates, Saint Charles, Kane County, Illinois, United

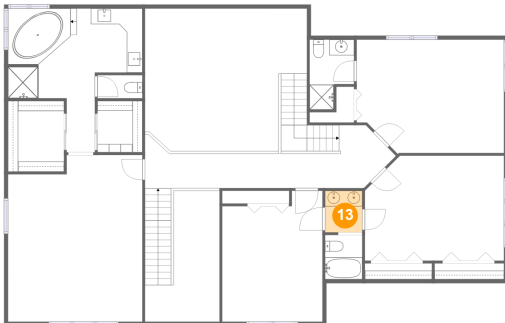
12 Floor 2 - Laundry



Dimensions: 15'4" x 6'7"
Area: 89 sq. ft
Counted as Living Area:
Yes

Heated: Yes
Finished: Yes
Enclosed: Yes
Contiguous:
Yes
Permitted: Yes
Wet Space: No
Addition: No
Conversion: No

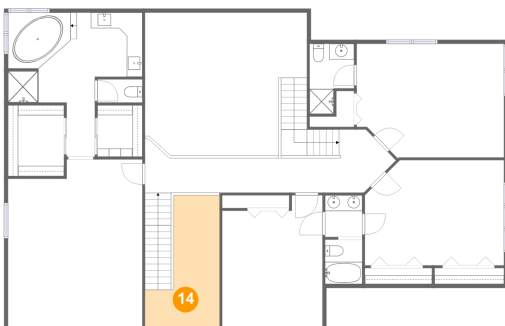
13 Floor 3 - Bath



Dimensions: 4'9" x 5'4"
Area: 25 sq. ft
Counted as Living Area:
Yes

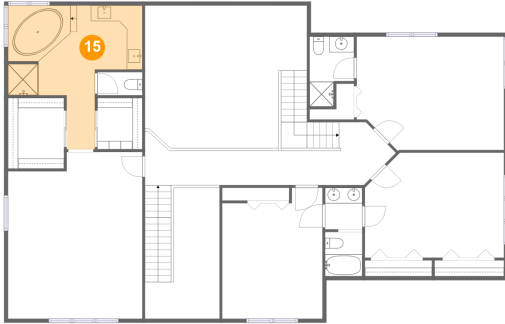
Heated: Yes
Finished: Yes
Enclosed: Yes
Contiguous:
Yes
Permitted: Yes
Wet Space: Yes
Addition: No
Conversion: No

14 Floor 3 - Open To Below



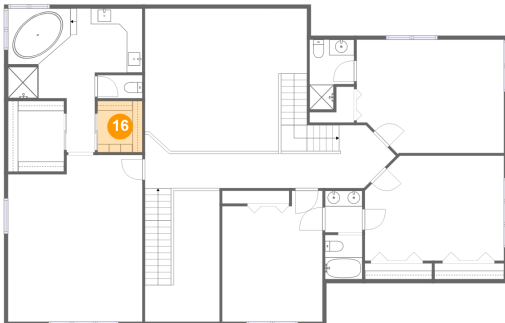
Dimensions: 9'6" x 16'8"
Area: 115 sq. ft
Counted as Living Area: No

Heated: No
Finished: No
Enclosed: No
Contiguous: Yes
Permitted: No
Wet Space: No
Addition: No
Conversion: No

**05n874 Westwood Lane, Longview Estates,
Saint Charles, Kane County, Illinois, United****15 Floor 3 - Primary Bath**

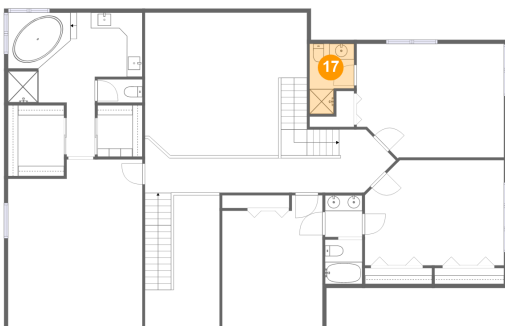
Dimensions: 17'2" x 18'4"
Area: 200 sq. ft
Counted as Living Area:
Yes

Heated: Yes
Finished: Yes
Enclosed: Yes
Contiguous:
Yes
Permitted: Yes
Wet Space: Yes
Addition: No
Conversion: No

16 Floor 3 - W.i.c.

Dimensions: 5'9" x 6'7"
Area: 38 sq. ft
Counted as Living Area:
Yes

Heated: Yes
Finished: Yes
Enclosed: Yes
Contiguous:
Yes
Permitted: Yes
Wet Space: No
Addition: No
Conversion: No

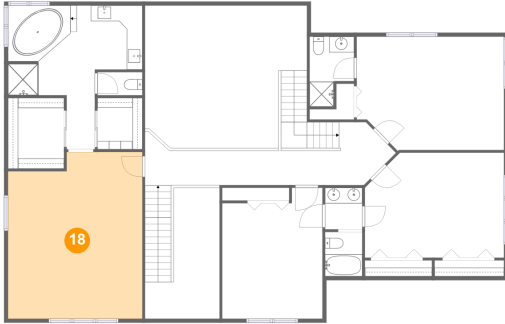
17 Floor 3 - Bath

Dimensions: 5'8" x 8'11"
Area: 42 sq. ft
Counted as Living Area:
Yes

Heated: Yes
Finished: Yes
Enclosed: Yes
Contiguous:
Yes
Permitted: Yes
Wet Space: Yes
Addition: No
Conversion: No

05n874 Westwood Lane, Longview Estates, Saint Charles, Kane County, Illinois, United

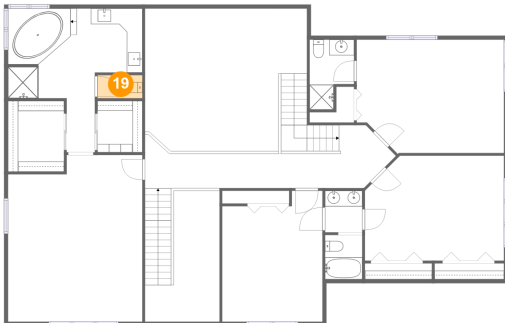
18 Floor 3 - Primary Bedroom



Dimensions: 17'2" x 21'3"
Area: 346 sq. ft
Counted as Living Area:
Yes

Heated: Yes
Finished: Yes
Enclosed: Yes
Contiguous:
Yes
Permitted: Yes
Wet Space: No
Addition: No
Conversion: No

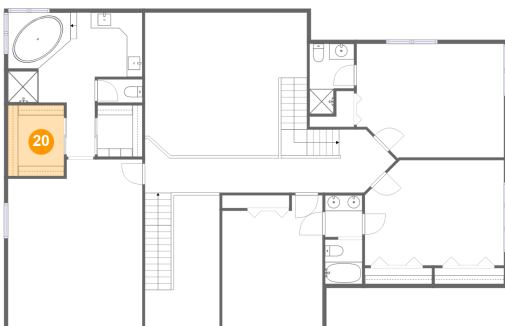
19 Floor 3 - Wc



Dimensions: 5'9" x 2'11"
Area: 17 sq. ft
Counted as Living Area:
Yes

Heated: Yes
Finished: Yes
Enclosed: Yes
Contiguous:
Yes
Permitted: Yes
Wet Space: Yes
Addition: No
Conversion: No

20 Floor 3 - W.i.c.

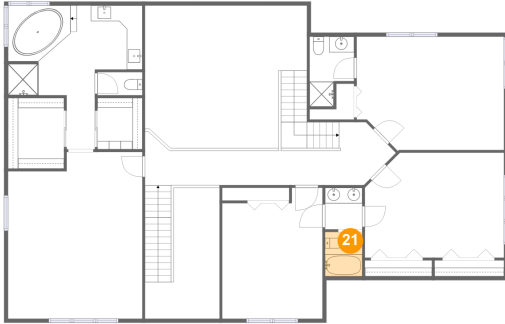


Dimensions: 7'2" x 9'0"
Area: 64 sq. ft
Counted as Living Area:
Yes

Heated: Yes
Finished: Yes
Enclosed: Yes
Contiguous:
Yes
Permitted: Yes
Wet Space: No
Addition: No
Conversion: No

05n874 Westwood Lane, Longview Estates, Saint Charles, Kane County, Illinois, United

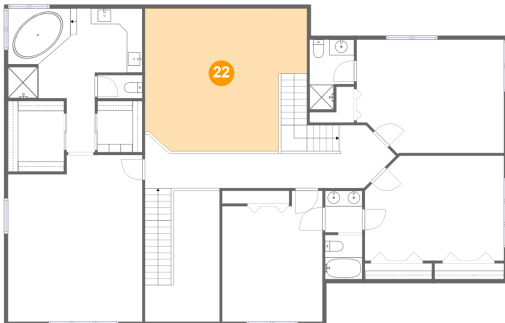
21 Floor 3 - Bath



Dimensions: 4'9" x 5'8"
Area: 27 sq. ft
Counted as Living Area:
Yes

Heated: Yes
Finished: Yes
Enclosed: Yes
Contiguous:
Yes
Permitted: Yes
Wet Space: Yes
Addition: No
Conversion: No

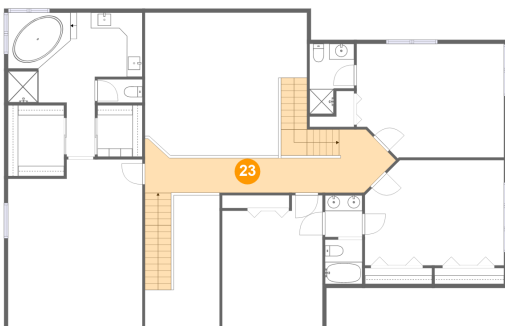
22 Floor 3 - Open To Below



Dimensions: 20'8" x 18'2"
Area: 335 sq. ft
Counted as Living Area: No

Heated: No
Finished: No
Enclosed: No
Contiguous: Yes
Permitted: No
Wet Space: No
Addition: No
Conversion: No

23 Floor 3 - Hall



Dimensions: 31'11" x 19'2"
Area: 242 sq. ft
Counted as Living Area:
Yes

Heated: Yes
Finished: Yes
Enclosed: Yes
Contiguous:
Yes
Permitted: Yes
Wet Space: No
Addition: No
Conversion: No

05n874 Westwood Lane, Longview Estates, Saint Charles, Kane County, Illinois, United

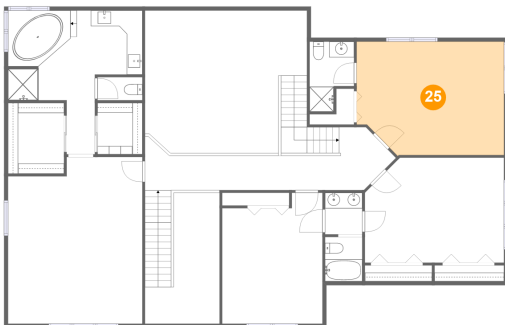
24 Floor 3 - Bedroom



Dimensions: 12'10" x 16'8"
Area: 196 sq. ft
Counted as Living Area:
Yes

Heated: Yes
Finished: Yes
Enclosed: Yes
Contiguous:
Yes
Permitted: Yes
Wet Space: No
Addition: No
Conversion: No

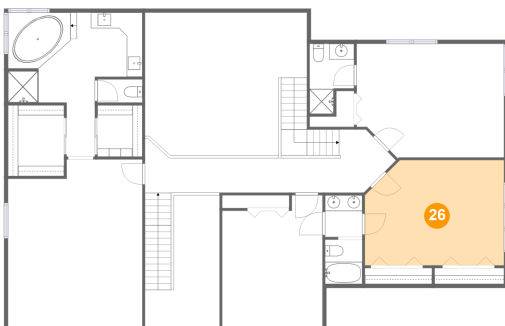
25 Floor 3 - Bedroom



Dimensions: 18'10" x 14'7"
Area: 259 sq. ft
Counted as Living Area:
Yes

Heated: Yes
Finished: Yes
Enclosed: Yes
Contiguous:
Yes
Permitted: Yes
Wet Space: No
Addition: No
Conversion: No

26 Floor 3 - Bedroom



Dimensions: 17'9" x 13'5"
Area: 228 sq. ft
Counted as Living Area:
Yes

Heated: Yes
Finished: Yes
Enclosed: Yes
Contiguous:
Yes
Permitted: Yes
Wet Space: No
Addition: No
Conversion: No