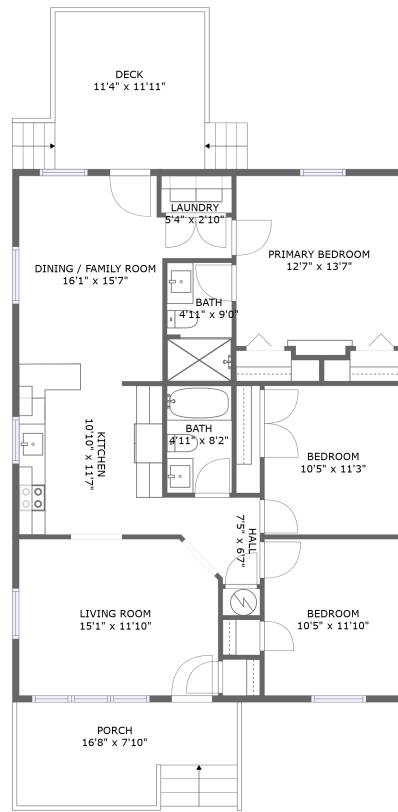



122 Troy Avenue Northeast, Preston Park, Roanoke, Roanoke city, Virginia, United States, 24012



FLOOR 1

Property summary

 **0** Garages

 **3** Bedrooms

 **2** Bathrooms

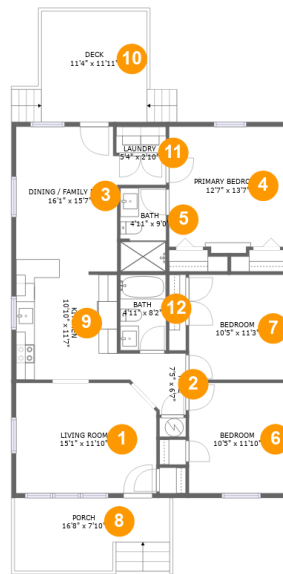
 **0** Half baths

 **1** Floors

 **1,212**
Gross living
area sqft

 **1,459**
Total sqft

122 Troy Avenue Northeast, Preston Park, Roanoke, Roanoke city, Virginia, United States, 24012



Room dimensions

Floor 1

Total sqft: 1459 Living area: 1212

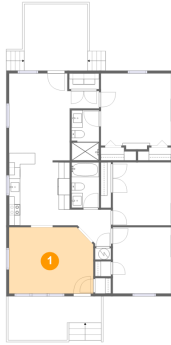
#		Dimensions	sqft	Counted as living area
1	Living Room	15'1" x 11'10"	174 sq. ft	Yes
2	Hall	7'5" x 6'7"	37 sq. ft	Yes
3	Dining / Family Room	16'1" x 15'7"	184 sq. ft	Yes
4	Bedroom	12'7" x 13'7"	165 sq. ft	Yes
5	Bath	4'11" x 9'0"	44 sq. ft	Yes
6	Bedroom	10'5" x 11'10"	124 sq. ft	Yes
7	Bedroom	10'5" x 11'3"	118 sq. ft	Yes
8	Outdoor	16'8" x 7'10"	112 sq. ft	No
9	Kitchen	10'10" x 11'7"	125 sq. ft	Yes
10	Outdoor	11'4" x 11'11"	135 sq. ft	No
11	Utility	5'4" x 2'10"	15 sq. ft	Yes

**122 Troy Avenue Northeast, Preston Park, Roanoke,
Roanoke city, Virginia, United States, 24012**

#		Dimensions	sqft	Counted as living area
12	Bath	4'11" x 8'2"	40 sq. ft	Yes

122 Troy Avenue Northeast, Preston Park, Roanoke, Roanoke city, Virginia, United States, 24012

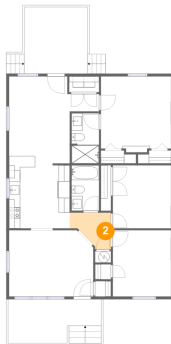
1 Floor 1 - Living Room



Dimensions: 15'1" x 11'10"
Area: 174 sq. ft
Counted as living area: Yes

Heated: Yes
Finished: Yes
Enclosed: Yes
Contiguous: Yes
Permitted: Yes
Wet space: No
Addition: No
Conversion: No

2 Floor 1 - Hall

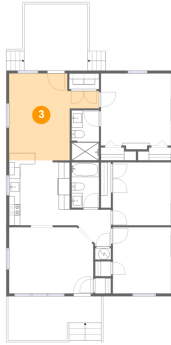


Dimensions: 7'5" x 6'7"
Area: 37 sq. ft
Counted as living area: Yes

Heated: Yes
Finished: Yes
Enclosed: Yes
Contiguous: Yes
Permitted: Yes
Wet space: No
Addition: No
Conversion: No

122 Troy Avenue Northeast, Preston Park, Roanoke, Roanoke city, Virginia, United States, 24012

3 Floor 1 - Dining / Family Room



Dimensions: 16'1" x 15'7"
Area: 184 sq. ft
Counted as living area: Yes

Heated: Yes
Finished: Yes
Enclosed: Yes
Contiguous: Yes
Permitted: Yes
Wet space: No
Addition: No
Conversion: No

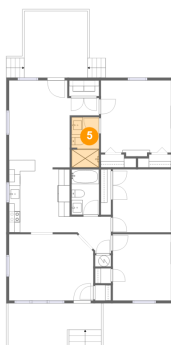
4 Floor 1 - Bedroom



Dimensions: 12'7" x 13'7"
Area: 165 sq. ft
Counted as living area: Yes

Heated: Yes
Finished: Yes
Enclosed: Yes
Contiguous: Yes
Permitted: Yes
Wet space: No
Addition: No
Conversion: No

5 Floor 1 - Bath

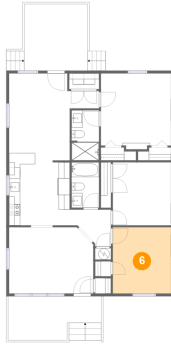


Dimensions: 4'11" x 9'0"
Area: 44 sq. ft
Counted as living area: Yes

Heated: Yes
Finished: Yes
Enclosed: Yes
Contiguous: Yes
Permitted: Yes
Wet space: Yes
Addition: No
Conversion: No

122 Troy Avenue Northeast, Preston Park, Roanoke, Roanoke city, Virginia, United States, 24012

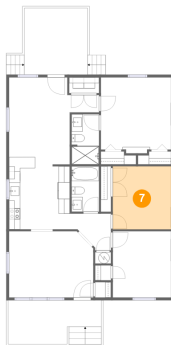
6 Floor 1 - Bedroom



Dimensions: 10'5" x 11'10"
Area: 124 sq. ft
Counted as living area: Yes

Heated: Yes
Finished: Yes
Enclosed: Yes
Contiguous: Yes
Permitted: Yes
Wet space: No
Addition: No
Conversion: No

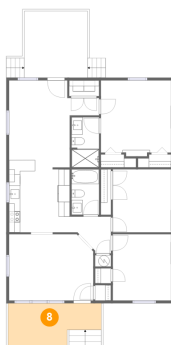
7 Floor 1 - Bedroom



Dimensions: 10'5" x 11'3"
Area: 118 sq. ft
Counted as living area: Yes

Heated: Yes
Finished: Yes
Enclosed: Yes
Contiguous: Yes
Permitted: Yes
Wet space: No
Addition: No
Conversion: No

8 Floor 1 - Outdoor

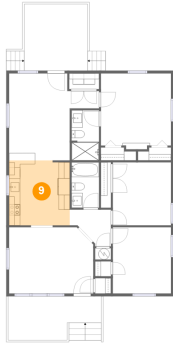


Dimensions: 16'8" x 7'10"
Area: 112 sq. ft
Counted as living area: No

Heated: No
Finished: Yes
Enclosed: No
Contiguous: Yes
Permitted: Yes
Wet space: No
Addition: No
Conversion: No

122 Troy Avenue Northeast, Preston Park, Roanoke, Roanoke city, Virginia, United States, 24012

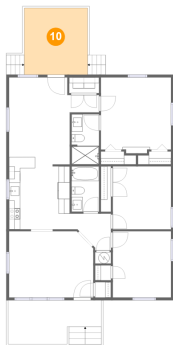
9 Floor 1 - Kitchen



Dimensions: 10'10" x 11'7"
Area: 125 sq. ft
Counted as living area: Yes

Heated: Yes
Finished: Yes
Enclosed: Yes
Contiguous: Yes
Permitted: Yes
Wet space: No
Addition: No
Conversion: No

10 Floor 1 - Outdoor



Dimensions: 11'4" x 11'11"
Area: 135 sq. ft
Counted as living area: No

Heated: No
Finished: Yes
Enclosed: No
Contiguous: Yes
Permitted: Yes
Wet space: No
Addition: No
Conversion: No

11 Floor 1 - Utility

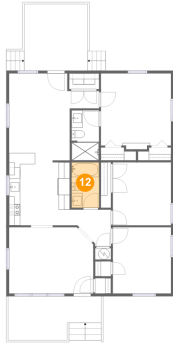


Dimensions: 5'4" x 2'10"
Area: 15 sq. ft
Counted as living area: Yes

Heated: Yes
Finished: Yes
Enclosed: Yes
Contiguous: Yes
Permitted: Yes
Wet space: No
Addition: No
Conversion: No

**122 Troy Avenue Northeast, Preston Park, Roanoke,
Roanoke city, Virginia, United States, 24012**

12 Floor 1 - Bath



Dimensions: 4'11" x 8'2"
Area: 40 sq. ft
Counted as living area: Yes

Heated: Yes
Finished: Yes
Enclosed: Yes
Contiguous: Yes
Permitted: Yes
Wet space: Yes
Addition: No
Conversion: No