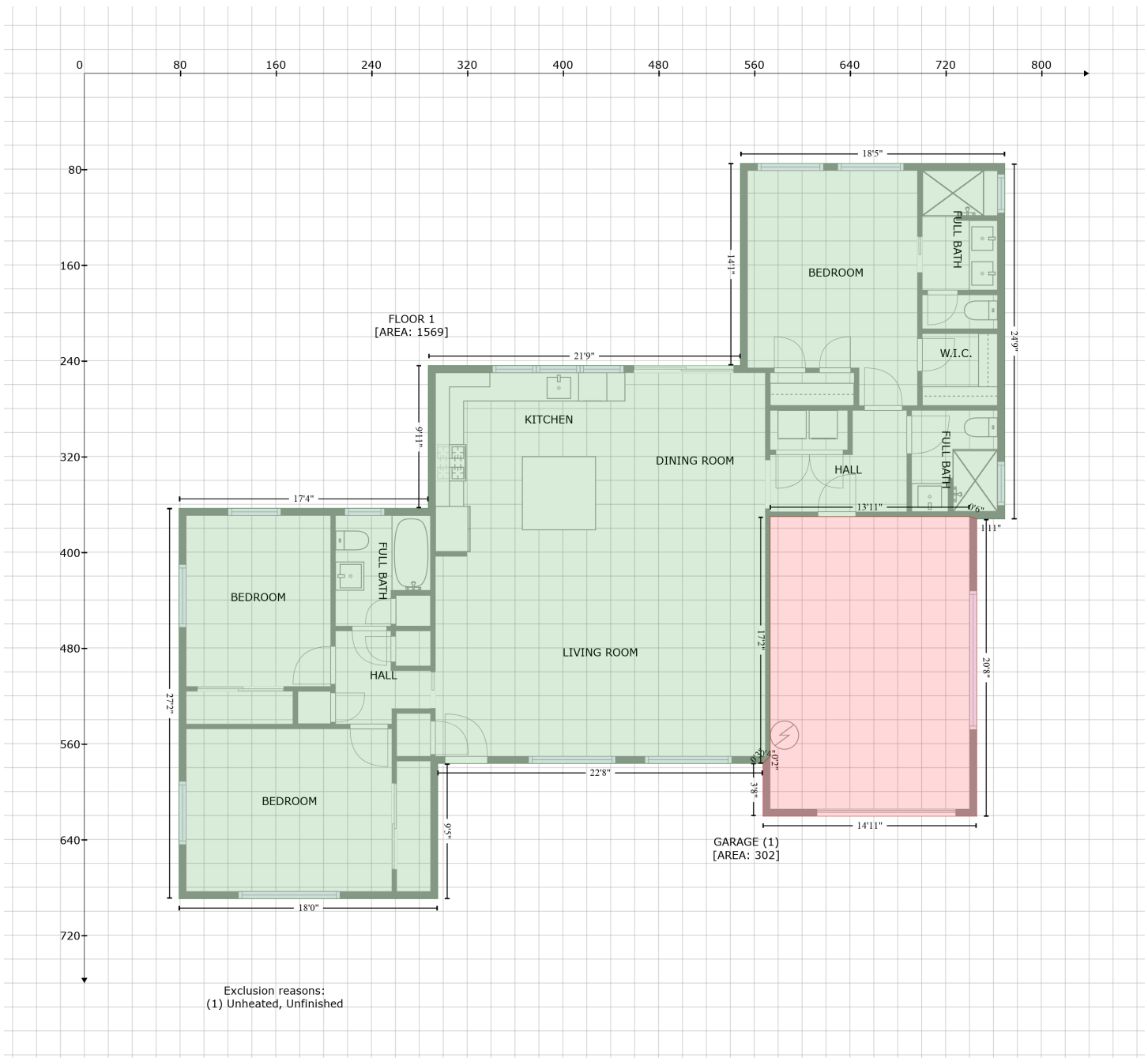


340 Mehlenbacher Road, Belleair, Pinellas County, Florida, United States, 33756

Gross Living Area: 1569 sq. ft



Space

Area (sq. ft)

Calculation Coordinate Polygon Area Algorithm using inches

FLOOR 1
(Living area)

1569

$$\begin{aligned}
 & -((769.5 + 769.5) * (75.2 - 372.3) + (769.5 + 746.1) * (372.3 - 372.3) + (746.1 + 740.1) * (372.3 - 370.3) \\
 & + (740.1 + 573.3) * (370.3 - 370.3) + (573.3 + 573.3) * (370.3 - 570.6) + (573.3 + 567.3) * \\
 & (570.6 - 576.6) + (567.3 + 295.4) * (576.6 - 576.6) + (295.4 + 295.4) * (576.6 - 689.5) + (295.4 + \\
 & 79.1) * (689.5 - 689.5) + (79.1 + 79.1) * (689.5 - 363.4) + (79.1 + 287.4) * (363.4 - 363.4) + (287.4 \\
 & + 287.4) * (363.4 - 244.1) + (287.4 + 548.4) * (244.1 - 244.1) + (548.4 + 548.4) * (244.1 - 75.2) + \\
 & (548.4 + 769.5) * (75.2 - 75.2)) * 0.5 * 0.00694
 \end{aligned}$$

340 Mehlenbacher Road, Belleair, Pinellas County, Florida, United States, 33756

Gross Living Area: 1569 sq. ft

| Space | Area (sq. ft) | Calculation <small>Coordinate Polygon Area Algorithm using inches</small> |
|-----------------------------|---------------|---|
| GARAGE (Non-living area) | 302 | $-\left(\left(740.1 + 746.1\right) * \left(370.3 - 372.3\right) + \left(746.1 + 746.1\right) * \left(372.3 - 620.7\right) + \left(746.1 + 567.3\right) * \left(620.7 - 620.7\right) + \left(567.3 + 567.3\right) * \left(620.7 - 576.6\right) + \left(567.3 + 573.3\right) * \left(576.6 - 570.6\right) + \left(573.3 + 573.3\right) * \left(570.6 - 370.3\right) + \left(573.3 + 740.1\right) * \left(370.3 - 370.3\right)\right) * 0.5 * 0.00694$ |