

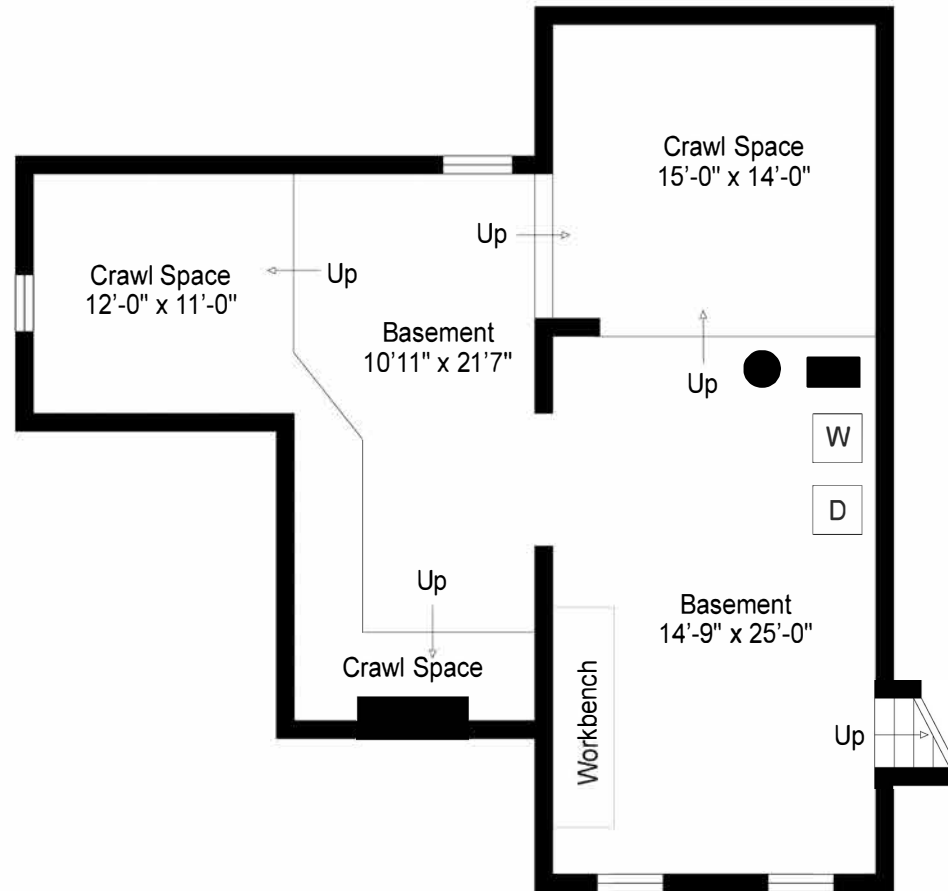


FIRST FLOOR

Floor plan, furniture, and fixture measurements and dimensions are approximate and are for illustrative purposes only. The representative gives no guarantee, warranty or representation as to the accuracy and completeness of the floor plan.

First Floor	1320 Sq.Ft.
Basement	585 Sq.Ft.
Crawl Space	415 Sq.Ft.
Garage First Floor	505 Sq.Ft.
Garage Second Floor	310 Sq.Ft.

18 Hillover Road E, Hampton Bays, NY 11946

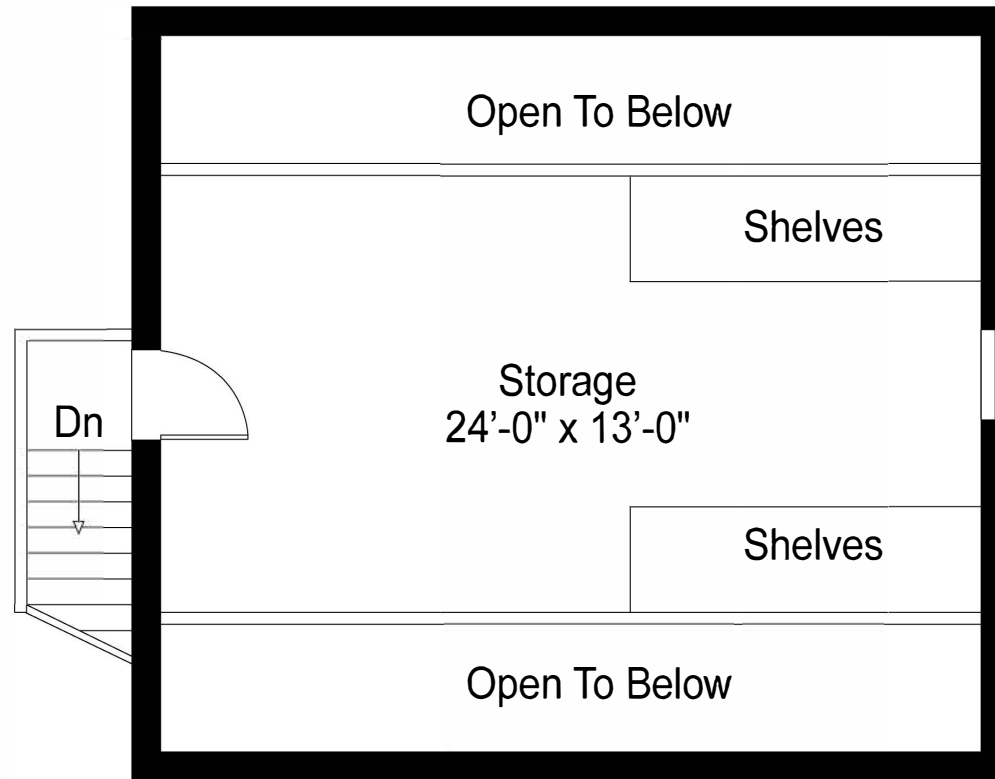


BASEMENT

Floor plan, furniture, and fixture measurements and dimensions are approximate and are for illustrative purposes only. The representative gives no guarantee, warranty or representation as to the accuracy and completeness of the floor plan.

First Floor	1320 Sq.Ft.
Basement	585 Sq.Ft.
Crawl Space	415 Sq.Ft.
Garage First Floor	505 Sq.Ft.
Garage Second Floor	310 Sq.Ft.

18 Hillover Road E, Hampton Bays, NY 11946

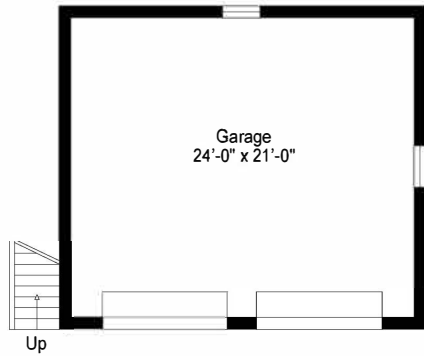


GARAGE SECOND FLOOR

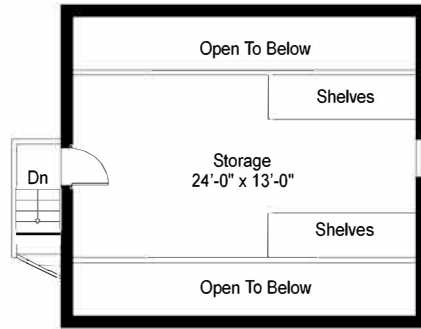
Floor plan, furniture, and fixture measurements and dimensions are approximate and are for illustrative purposes only. The representative gives no guarantee, warranty or representation as to the accuracy and completeness of the floor plan.

First Floor	1320 Sq.Ft.
Basement	585 Sq.Ft.
Crawl Space	415 Sq.Ft.
Garage First Floor	505 Sq.Ft.
Garage Second Floor	310 Sq.Ft.

18 Hillover Road E, Hampton Bays, NY 11946



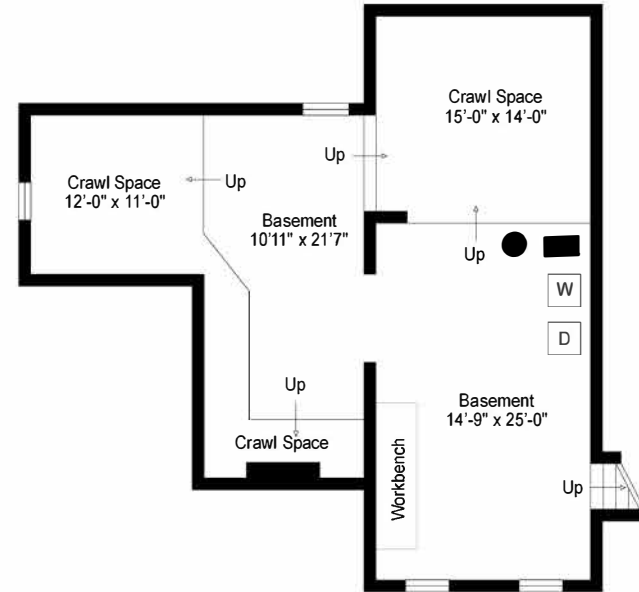
GARAGE FIRST FLOOR



GARAGE SECOND FLOOR



FIRST FLOOR



BASEMENT

First Floor	1320 Sq.Ft.
Basement	585 Sq.Ft.
Crawl Space	415 Sq.Ft.
Garage First Floor	505 Sq.Ft.
Garage Second Floor	310 Sq.Ft.

Floor plan, furniture, and fixture measurements and dimensions are approximate and are for illustrative purposes only. The representative gives no guarantee, warranty or representation as to the accuracy and completeness of the floor plan.

18 Hillover Road E, Hampton Bays, NY 11946