

201-7600 Moffatt Rd

RICHMOND BC V6Y 3V1

Total Area 1,530 SQ.FT.

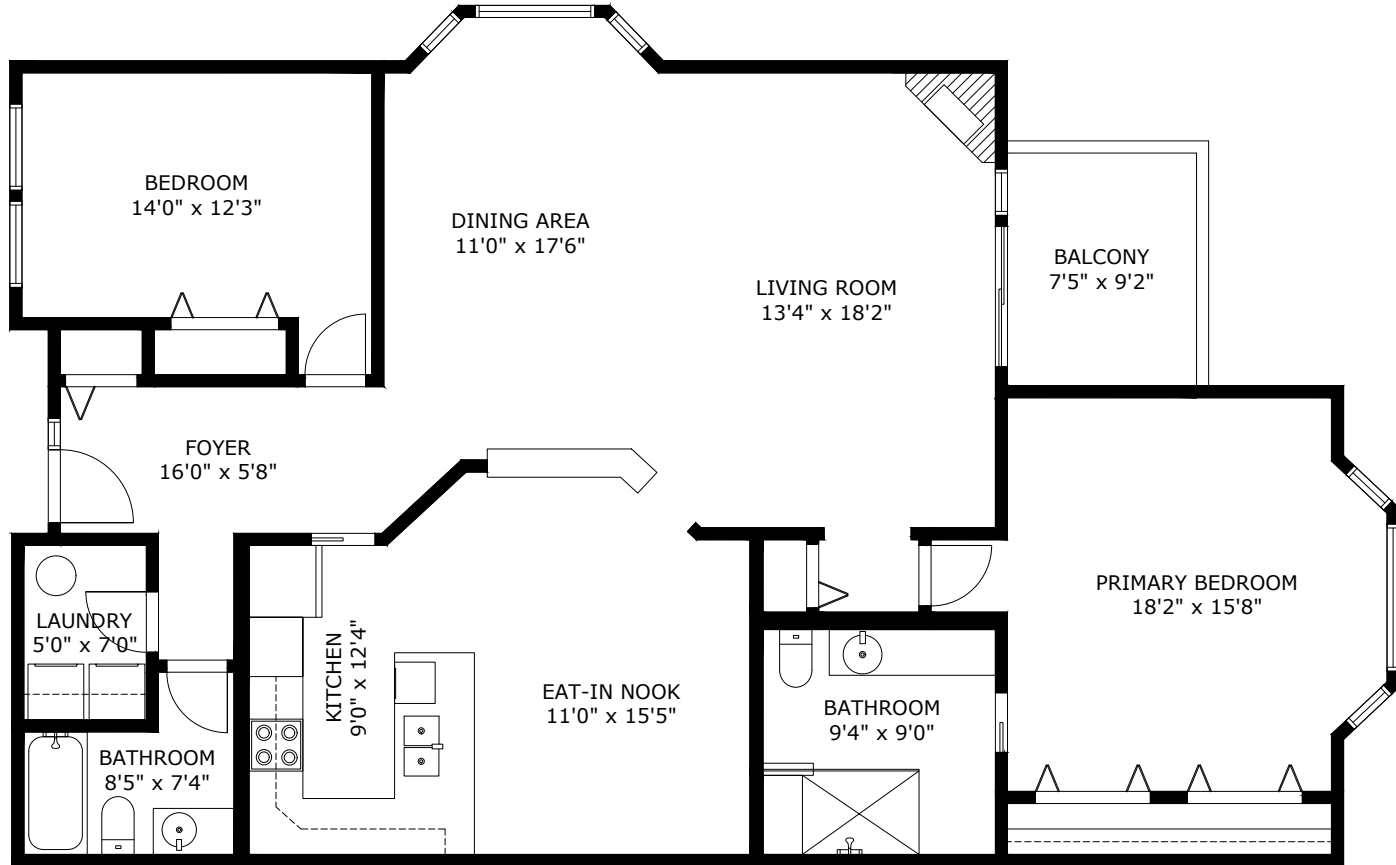
Balcony Area: 68 SQ.FT.

Ceiling Height: 8'0"-12'4"

2
BEDROOMS

2
BATHROOMS

1,530
TOTAL SQ.FT.



3D IMMERSIVE
Tours Photos Floor Plans

Professionally measured by: 3D Immersive Marketing Ltd.

Lead Floor Planner: *Sara Alexander*
Quality Assurance: *Janice Graham*