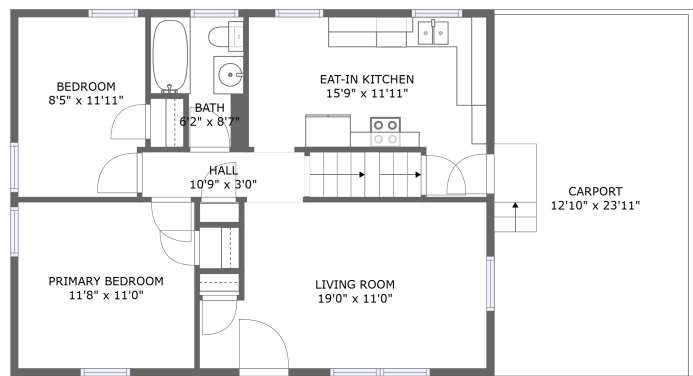
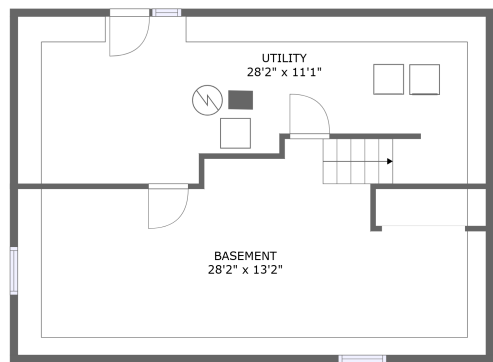


Home report

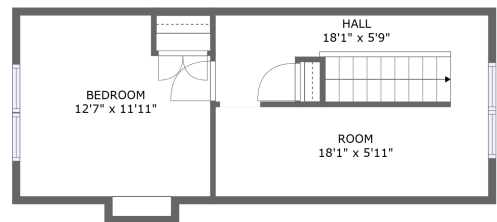
2433 Westover Avenue Southwest, Roanoke, Virginia 24015,  
United States



FLOOR 2



FLOOR 1



FLOOR 3

**Total Area: 995 sq. ft**

Below Ground: 0 sq. ft, Floor 2: 777 sq. ft, Floor 3: 218 sq. ft

Excluded: Undefined 26 sq. ft, Basement 390 sq. ft, Utility 335 sq. ft, Carport 308 sq. ft, Low Ceiling 204 sq. ft

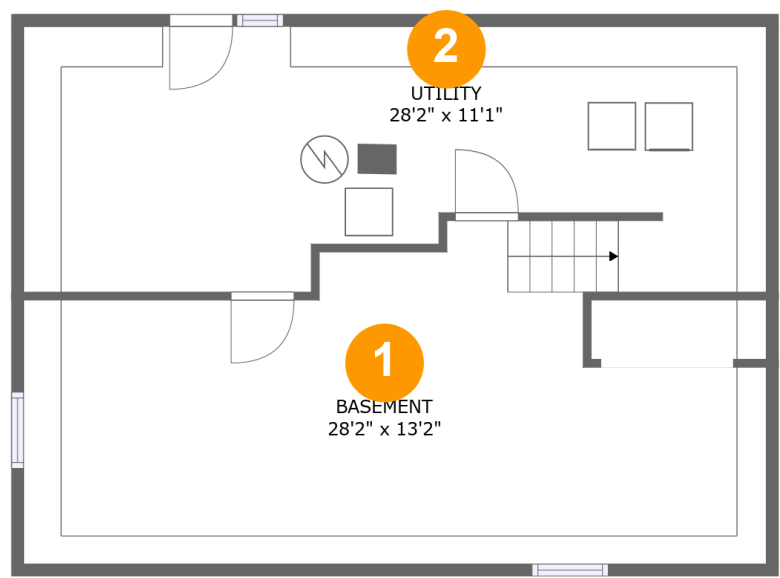
Property summary

 **3** Floors

 **3** Bedrooms

 **1** Bathrooms

2433 Westover Avenue Southwest, Roanoke, Virginia 24015,  
United States



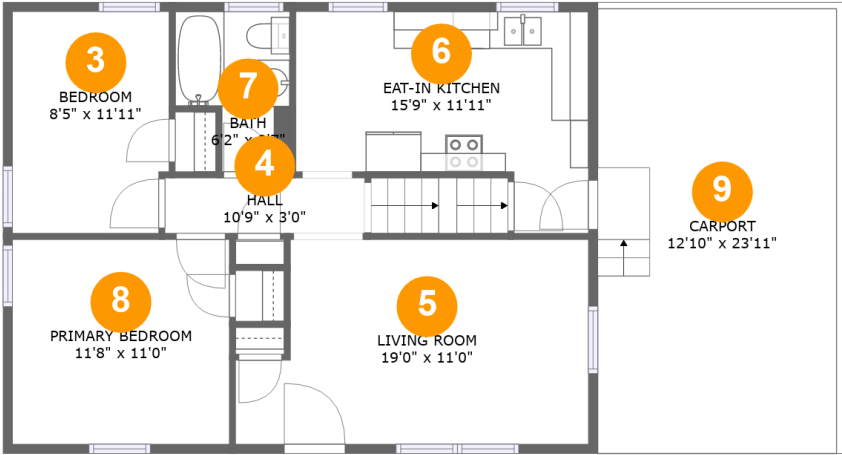
Room dimensions

Floor 1 Below ground Total:0sqft Excluded: 751sqft

#		Max Dimensions	sqft	Included
1	Basement	28'2" x 13'2"	354 sq. ft	No
2	Utility	28'2" x 11'1"	307 sq. ft	No

Home report

2433 Westover Avenue Southwest, Roanoke, Virginia 24015,  
United States

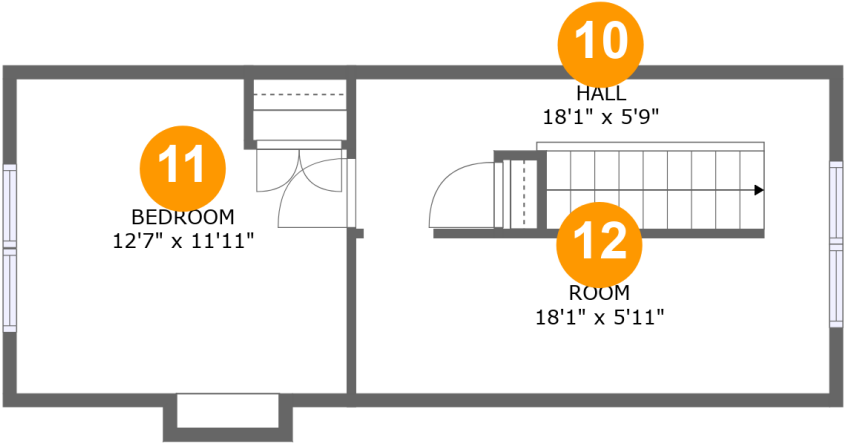


Room dimensions

Floor 2 Total:777sqft    Excluded: 308sqft

#		Max Dimensions	sqft	Included
3	Bedroom	8'5" x 11'11"	99 sq. ft	Yes
4	Hall	10'9" x 3'0"	32 sq. ft	Yes
5	Living Room	19'0" x 11'0"	190 sq. ft	Yes
6	Eat-in Kitchen	15'9" x 11'11"	149 sq. ft	Yes
7	Bath	6'2" x 8'7"	44 sq. ft	Yes
8	Primary Bedroom	11'8" x 11'0"	129 sq. ft	Yes
9	Carport	12'10" x 23'11"	308 sq. ft	No

2433 Westover Avenue Southwest, Roanoke, Virginia 24015,  
United States



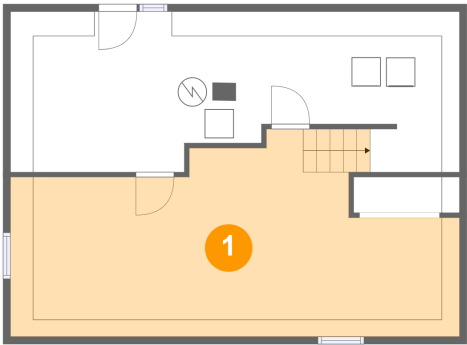
Room dimensions

Floor 3 Total:218sqft   Excluded: 204sqft

#		Max Dimensions	sqft	Included
10	Hall	18'1" x 5'9"	50 sq. ft	Yes
11	Bedroom	12'7" x 11'11"	85 sq. ft	Yes
12	Room	18'1" x 5'11"	62 sq. ft	Yes

2433 Westover Avenue Southwest, Roanoke, Virginia 24015,  
United States

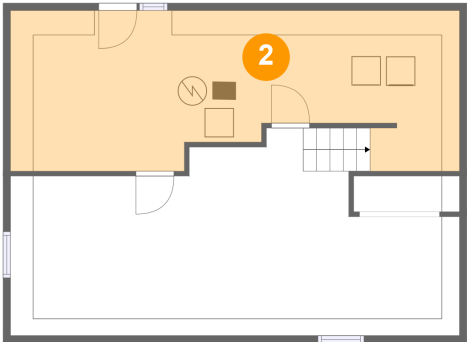
1 Floor 1 - Basement



Max Dimensions: 28'2" x 13'2"  
Calculated Area: 354 sq. ft  
Included: No

Heated: Yes  
Finished: No  
Enclosed: Yes  
Contiguous: Yes  
Permitted: Yes  
Wet space: No  
Addition: No  
Conversion: No

2 Floor 1 - Utility

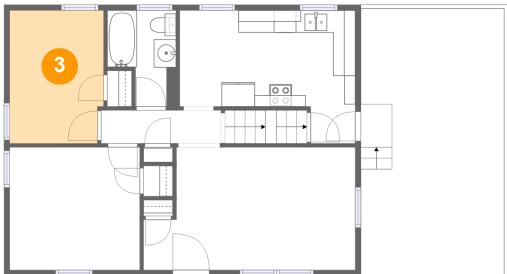


Max Dimensions: 28'2" x 11'1"  
Calculated Area: 307 sq. ft  
Included: No

Heated: Yes  
Finished: No  
Enclosed: Yes  
Contiguous: Yes  
Permitted: Yes  
Wet space: No  
Addition: No  
Conversion: No

2433 Westover Avenue Southwest, Roanoke, Virginia 24015,  
United States

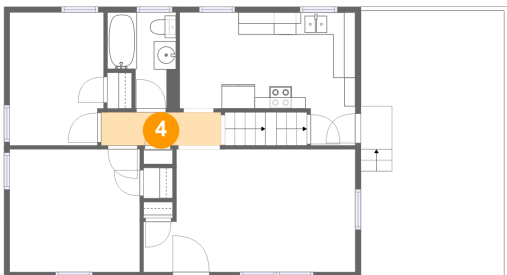
3 Floor 2 - Bedroom



Max Dimensions: 8'5" x 11'11"  
Calculated Area: 99 sq. ft  
Included: Yes

Heated: Yes  
Finished: Yes  
Enclosed: Yes  
Contiguous: Yes  
Permitted: Yes  
Wet space: No  
Addition: No  
Conversion: No

4 Floor 2 - Hall



Max Dimensions: 10'9" x 3'0"  
Calculated Area: 32 sq. ft  
Included: Yes

Heated: Yes  
Finished: Yes  
Enclosed: Yes  
Contiguous: Yes  
Permitted: Yes  
Wet space: No  
Addition: No  
Conversion: No

5 Floor 2 - Living Room



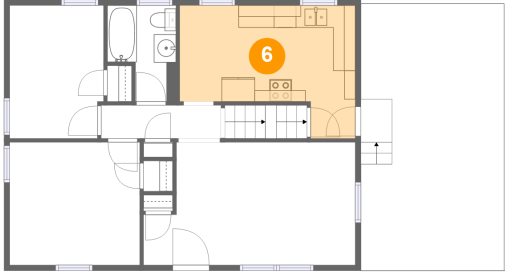
Max Dimensions: 19'0" x 11'0"  
Calculated Area: 190 sq. ft  
Included: Yes

Heated: Yes  
Finished: Yes  
Enclosed: Yes  
Contiguous: Yes  
Permitted: Yes  
Wet space: No  
Addition: No  
Conversion: No

## Home report

2433 Westover Avenue Southwest, Roanoke, Virginia 24015,  
United States

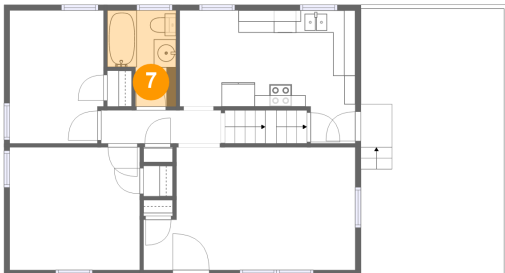
### 6 Floor 2 - Eat-in Kitchen



Max Dimensions: 15'9" x 11'11"  
Calculated Area: 149 sq. ft  
Included: Yes

Heated: Yes  
Finished: Yes  
Enclosed: Yes  
Contiguous: Yes  
Permitted: Yes  
Wet space: No  
Addition: No  
Conversion: No

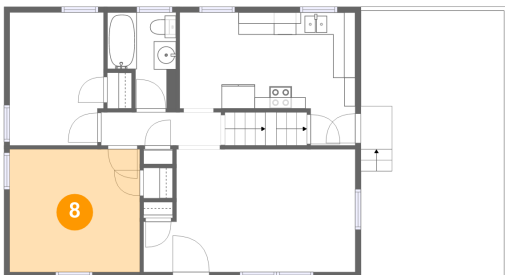
### 7 Floor 2 - Bath



Max Dimensions: 6'2" x 8'7"  
Calculated Area: 44 sq. ft  
Included: Yes

Heated: Yes  
Finished: Yes  
Enclosed: Yes  
Contiguous: Yes  
Permitted: Yes  
Wet space: Yes  
Addition: No  
Conversion: No

### 8 Floor 2 - Primary Bedroom



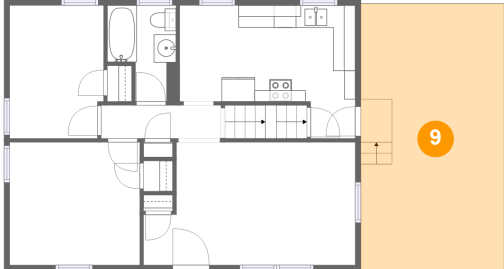
Max Dimensions: 11'8" x 11'0"  
Calculated Area: 129 sq. ft  
Included: Yes

Heated: Yes  
Finished: Yes  
Enclosed: Yes  
Contiguous: Yes  
Permitted: Yes  
Wet space: No  
Addition: No  
Conversion: No

## Home report

2433 Westover Avenue Southwest, Roanoke, Virginia 24015,  
United States

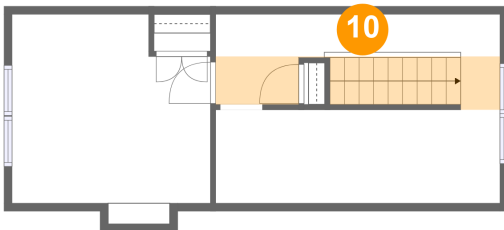
### 9 Floor 2 - Carport



Max Dimensions: 12'10" x 23'11"  
Calculated Area: 308 sq. ft  
Included: No

Heated: No  
Finished: Yes  
Enclosed: No  
Contiguous: Yes  
Permitted: Yes  
Wet space: No  
Addition: No  
Conversion: No

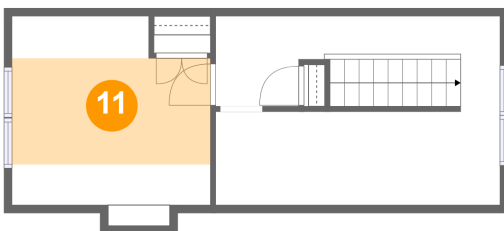
### 10 Floor 3 - Hall



Max Dimensions: 18'1" x 5'9"  
Calculated Area: 50 sq. ft  
Included: Yes

Heated: Yes  
Finished: Yes  
Enclosed: Yes  
Contiguous: Yes  
Permitted: Yes  
Wet space: No  
Addition: No  
Conversion: No

### 11 Floor 3 - Bedroom

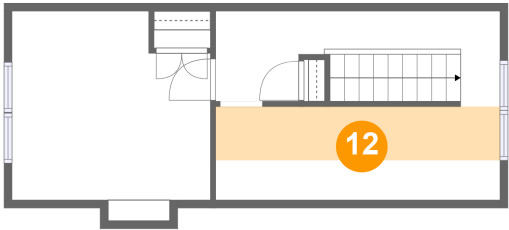


Max Dimensions: 12'7" x 11'11"  
Calculated Area: 85 sq. ft  
Included: Yes

Heated: Yes  
Finished: Yes  
Enclosed: Yes  
Contiguous: Yes  
Permitted: Yes  
Wet space: No  
Addition: No  
Conversion: No

2433 Westover Avenue Southwest, Roanoke, Virginia 24015,  
United States

12 Floor 3 - Room



Max Dimensions: 18'1" x 5'11"  
Calculated Area: 62 sq. ft  
Included: Yes

Heated: Yes  
Finished: Yes  
Enclosed: Yes  
Contiguous: Yes  
Permitted: Yes  
Wet space: No  
Addition: No  
Conversion: No