


6 Iron Bolt Court, Woodlawn, Catonsville, Baltimore County, Maryland, United States, 21228




Property summary

 **1** Garages

 **4** Bedrooms

 **2** Bathrooms

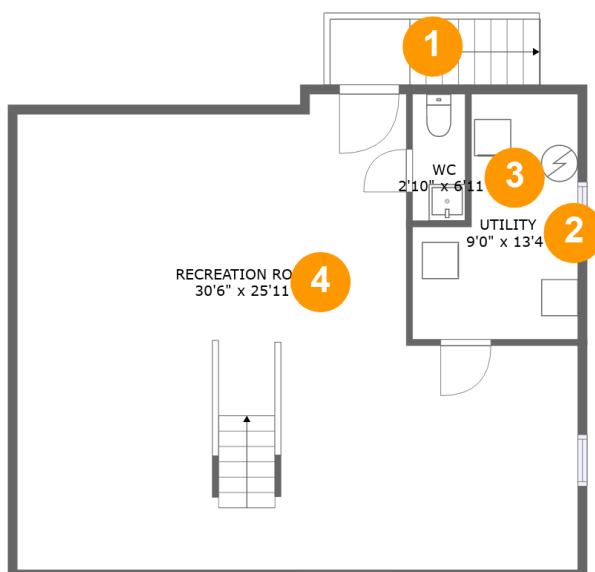
 **2** Half baths

 **3** Floors

 **2,829** Gross living area sqft

 **3,514** Total sqft

6 Iron Bolt Court, Woodlawn, Catonsville, Baltimore County, Maryland, United States, 21228



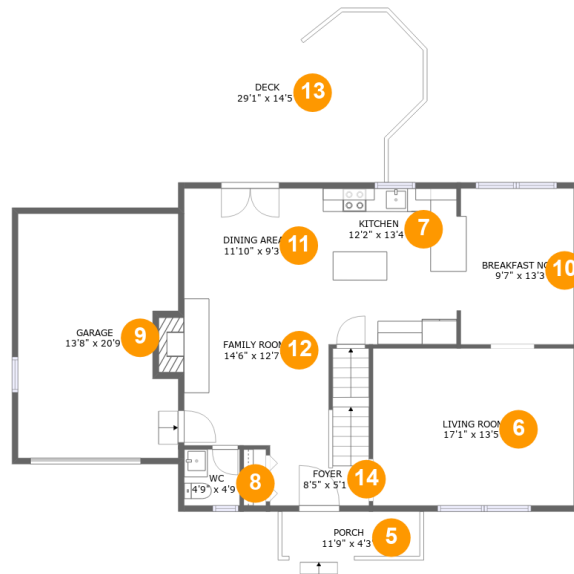
Room dimensions

Floor 1

Total sqft: 831 Living area: 831

#		Dimensions	sqft	Counted as living area
1	Outdoor	4'5" x 3'7"	41 sq. ft	No
2	Utility	9'0" x 13'4"	97 sq. ft	Yes
3	WC	2'10" x 6'11"	20 sq. ft	Yes
4	Recreation Room	30'6" x 25'11"	646 sq. ft	Yes

6 Iron Bolt Court, Woodlawn, Catonsville, Baltimore County, Maryland, United States, 21228



Room dimensions

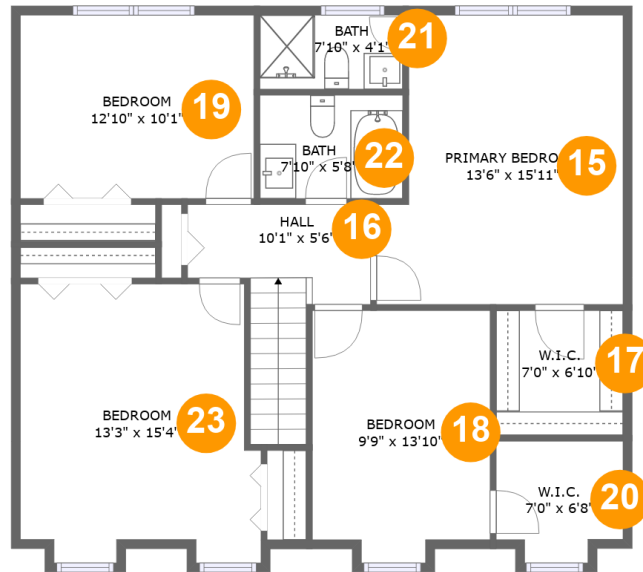
Floor 2

Total sqft: 1641

Living area: 956

#		Dimensions	sqft	Counted as living area
5	Porch	11'9" x 4'3"	48 sq. ft	No
6	Living Room	17'1" x 13'5"	229 sq. ft	Yes
7	Kitchen	12'2" x 13'4"	157 sq. ft	Yes
8	WC	4'9" x 4'9"	23 sq. ft	Yes
9	Garage	13'8" x 20'9"	271 sq. ft	No
10	Breakfast Nook	9'7" x 13'3"	124 sq. ft	Yes
11	Dining Area	11'10" x 9'3"	110 sq. ft	Yes
12	Family Room	14'6" x 12'7"	165 sq. ft	Yes
13	Deck	29'1" x 14'5"	329 sq. ft	No
14	Foyer	8'5" x 5'1"	68 sq. ft	Yes

6 Iron Bolt Court, Woodlawn, Catonsville, Baltimore County, Maryland, United States, 21228



Room dimensions

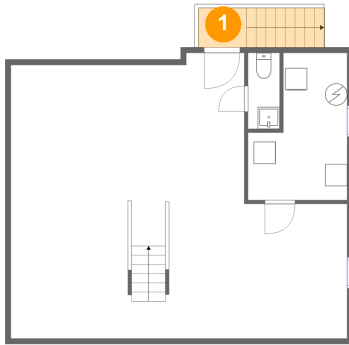
Floor 3

Total sqft: 1042 Living area: 1042

#		Dimensions	sqft	Counted as living area
15	Primary Bedroom	13'6" x 15'11"	193 sq. ft	Yes
16	Hall	10'1" x 5'6"	74 sq. ft	Yes
17	W.I.C.	7'0" x 6'10"	48 sq. ft	Yes
18	Bedroom	9'9" x 13'10"	128 sq. ft	Yes
19	Bedroom	12'10" x 10'1"	130 sq. ft	Yes
20	W.I.C.	7'0" x 6'8"	42 sq. ft	Yes
21	Bath	7'10" x 4'1"	32 sq. ft	Yes
22	Bath	7'10" x 5'8"	45 sq. ft	Yes
23	Bedroom	13'3" x 15'4"	187 sq. ft	Yes

6 Iron Bolt Court, Woodlawn, Catonsville, Baltimore County, Maryland, United States, 21228

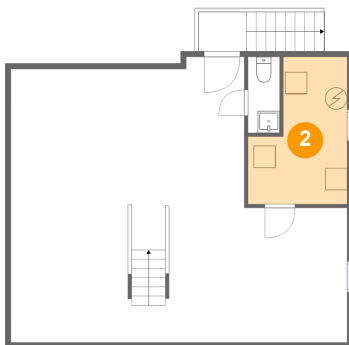
1 Floor 1 - Outdoor



Dimensions: 4'5" x 3'7"
Area: 41 sq. ft
Counted as living area: No

Heated: No
Finished: No
Enclosed: No
Contiguous: Yes
Permitted: No
Wet space: No
Addition: No
Conversion: No

2 Floor 1 - Utility

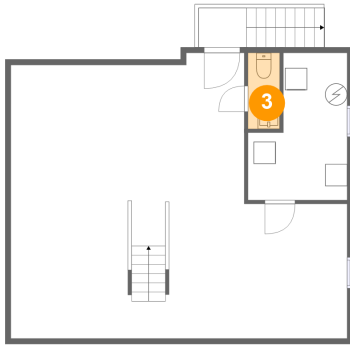


Dimensions: 9'0" x 13'4"
Area: 97 sq. ft
Counted as living area: Yes

Heated: Yes
Finished: Yes
Enclosed: Yes
Contiguous: Yes
Permitted: Yes
Wet space: No
Addition: No
Conversion: No

6 Iron Bolt Court, Woodlawn, Catonsville, Baltimore County, Maryland, United States, 21228

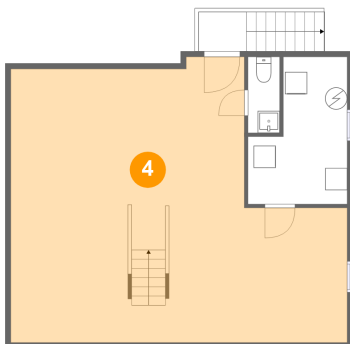
3 Floor 1 - WC



Dimensions: 2'10" x 6'11"
Area: 20 sq. ft
Counted as living area: Yes

Heated: Yes
Finished: Yes
Enclosed: Yes
Contiguous: Yes
Permitted: Yes
Wet space: Yes
Addition: No
Conversion: No

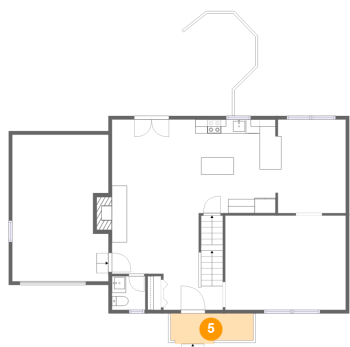
4 Floor 1 - Recreation Room



Dimensions: 30'6" x 25'11"
Area: 646 sq. ft
Counted as living area: Yes

Heated: Yes
Finished: Yes
Enclosed: Yes
Contiguous: Yes
Permitted: Yes
Wet space: No
Addition: No
Conversion: No

5 Floor 2 - Porch

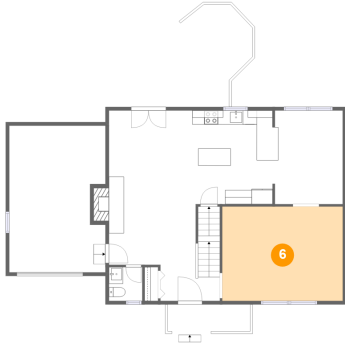


Dimensions: 11'9" x 4'3"
Area: 48 sq. ft
Counted as living area: No

Heated: No
Finished: Yes
Enclosed: No
Contiguous: Yes
Permitted: Yes
Wet space: No
Addition: No
Conversion: No

6 Iron Bolt Court, Woodlawn, Catonsville, Baltimore County, Maryland, United States, 21228

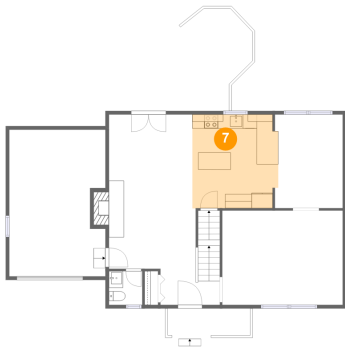
6 Floor 2 - Living Room



Dimensions: 17'1" x 13'5"
Area: 229 sq. ft
Counted as living area: Yes

Heated: Yes
Finished: Yes
Enclosed: Yes
Contiguous: Yes
Permitted: Yes
Wet space: No
Addition: No
Conversion: No

7 Floor 2 - Kitchen



Dimensions: 12'2" x 13'4"
Area: 157 sq. ft
Counted as living area: Yes

Heated: Yes
Finished: Yes
Enclosed: Yes
Contiguous: Yes
Permitted: Yes
Wet space: No
Addition: No
Conversion: No

8 Floor 2 - WC

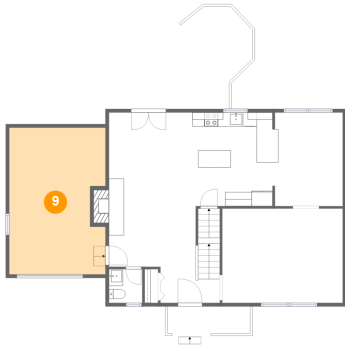


Dimensions: 4'9" x 4'9"
Area: 23 sq. ft
Counted as living area: Yes

Heated: Yes
Finished: Yes
Enclosed: Yes
Contiguous: Yes
Permitted: Yes
Wet space: Yes
Addition: No
Conversion: No

6 Iron Bolt Court, Woodlawn, Catonsville, Baltimore County, Maryland, United States, 21228

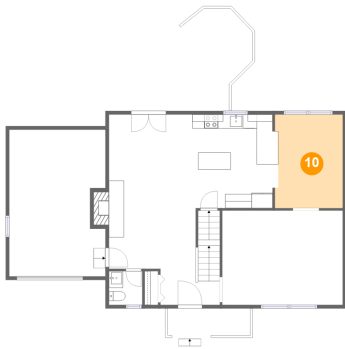
9 Floor 2 - Garage



Dimensions: 13'8" x 20'9"
Area: 271 sq. ft
Counted as living area: No

Heated: No
Finished: No
Enclosed: Yes
Contiguous: Yes
Permitted: Yes
Wet space: No
Addition: No
Conversion: No

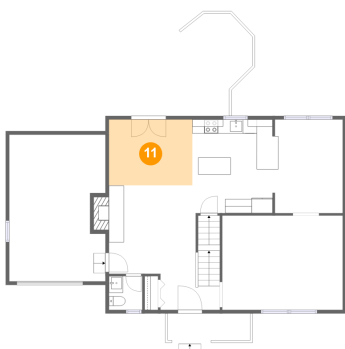
10 Floor 2 - Breakfast Nook



Dimensions: 9'7" x 13'3"
Area: 124 sq. ft
Counted as living area: Yes

Heated: Yes
Finished: Yes
Enclosed: Yes
Contiguous: Yes
Permitted: Yes
Wet space: No
Addition: No
Conversion: No

11 Floor 2 - Dining Area

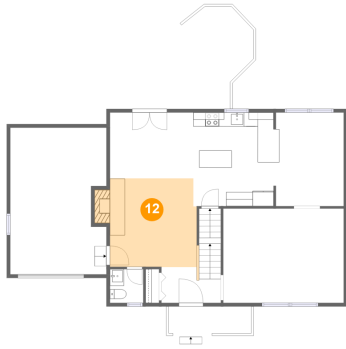


Dimensions: 11'10" x 9'3"
Area: 110 sq. ft
Counted as living area: Yes

Heated: Yes
Finished: Yes
Enclosed: Yes
Contiguous: Yes
Permitted: Yes
Wet space: No
Addition: No
Conversion: No

6 Iron Bolt Court, Woodlawn, Catonsville, Baltimore County, Maryland, United States, 21228

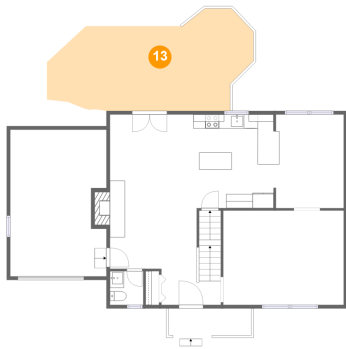
12 Floor 2 - Family Room



Dimensions: 14'6" x 12'7"
Area: 165 sq. ft
Counted as living area: Yes

Heated: Yes
Finished: Yes
Enclosed: Yes
Contiguous: Yes
Permitted: Yes
Wet space: No
Addition: No
Conversion: No

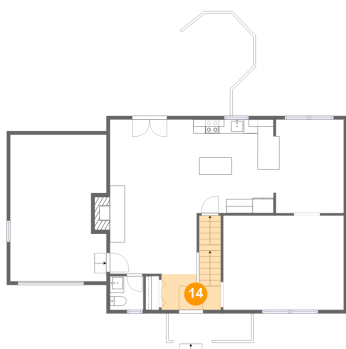
13 Floor 2 - Deck



Dimensions: 29'1" x 14'5"
Area: 329 sq. ft
Counted as living area: No

Heated: No
Finished: Yes
Enclosed: No
Contiguous: Yes
Permitted: Yes
Wet space: No
Addition: No
Conversion: No

14 Floor 2 - Foyer

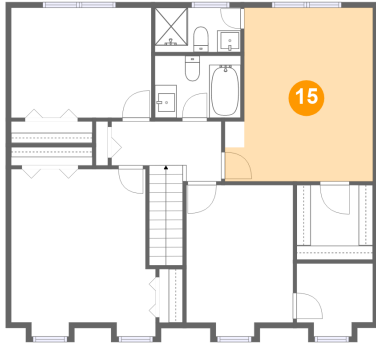


Dimensions: 8'5" x 5'1"
Area: 68 sq. ft
Counted as living area: Yes

Heated: Yes
Finished: Yes
Enclosed: Yes
Contiguous: Yes
Permitted: Yes
Wet space: No
Addition: No
Conversion: No

6 Iron Bolt Court, Woodlawn, Catonsville, Baltimore County, Maryland, United States, 21228

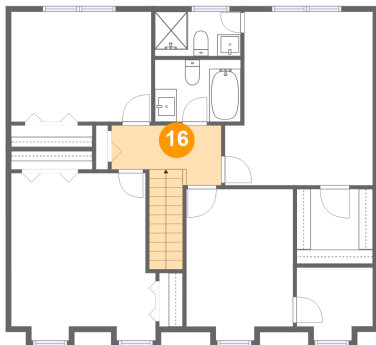
15 Floor 3 - Primary Bedroom



Dimensions: 13'6" x 15'11"
Area: 193 sq. ft
Counted as living area: Yes

Heated: Yes
Finished: Yes
Enclosed: Yes
Contiguous: Yes
Permitted: Yes
Wet space: No
Addition: No
Conversion: No

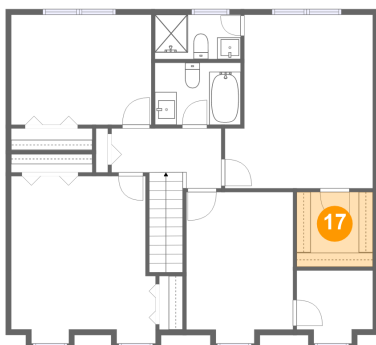
16 Floor 3 - Hall



Dimensions: 10'1" x 5'6"
Area: 74 sq. ft
Counted as living area: Yes

Heated: Yes
Finished: Yes
Enclosed: Yes
Contiguous: Yes
Permitted: Yes
Wet space: No
Addition: No
Conversion: No

17 Floor 3 - W.I.C.

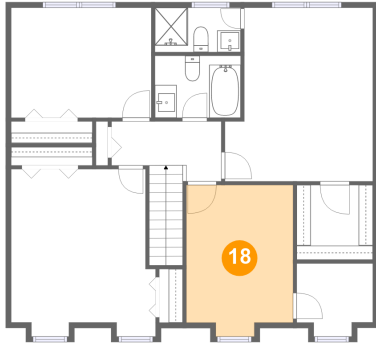


Dimensions: 7'0" x 6'10"
Area: 48 sq. ft
Counted as living area: Yes

Heated: Yes
Finished: Yes
Enclosed: Yes
Contiguous: Yes
Permitted: Yes
Wet space: No
Addition: No
Conversion: No

6 Iron Bolt Court, Woodlawn, Catonsville, Baltimore County, Maryland, United States, 21228

18 Floor 3 - Bedroom



Dimensions: 9'9" x 13'10"
Area: 128 sq. ft
Counted as living area: Yes

Heated: Yes
Finished: Yes
Enclosed: Yes
Contiguous: Yes
Permitted: Yes
Wet space: No
Addition: No
Conversion: No

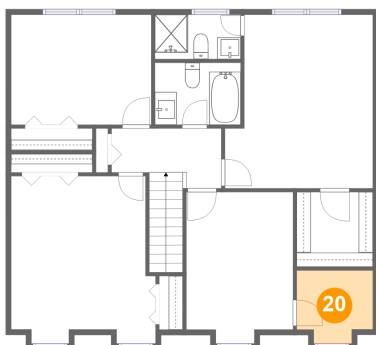
19 Floor 3 - Bedroom



Dimensions: 12'10" x 10'1"
Area: 130 sq. ft
Counted as living area: Yes

Heated: Yes
Finished: Yes
Enclosed: Yes
Contiguous: Yes
Permitted: Yes
Wet space: No
Addition: No
Conversion: No

20 Floor 3 - W.I.C.

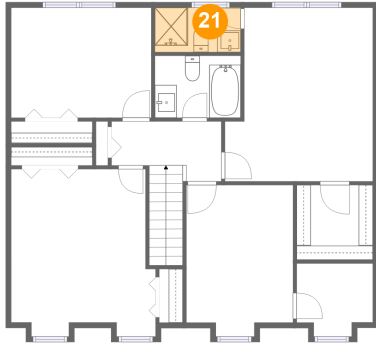


Dimensions: 7'0" x 6'8"
Area: 42 sq. ft
Counted as living area: Yes

Heated: Yes
Finished: Yes
Enclosed: Yes
Contiguous: Yes
Permitted: Yes
Wet space: No
Addition: No
Conversion: No

6 Iron Bolt Court, Woodlawn, Catonsville, Baltimore County, Maryland, United States, 21228

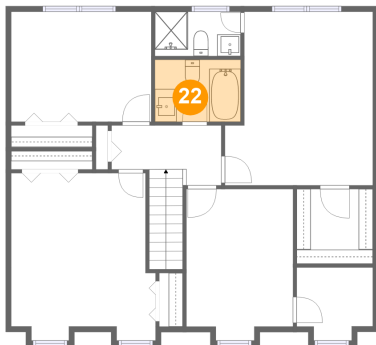
21 Floor 3 - Bath



Dimensions: 7'10" x 4'1"
Area: 32 sq. ft
Counted as living area: Yes

Heated: Yes
Finished: Yes
Enclosed: Yes
Contiguous: Yes
Permitted: Yes
Wet space: Yes
Addition: No
Conversion: No

22 Floor 3 - Bath



Dimensions: 7'10" x 5'8"
Area: 45 sq. ft
Counted as living area: Yes

Heated: Yes
Finished: Yes
Enclosed: Yes
Contiguous: Yes
Permitted: Yes
Wet space: Yes
Addition: No
Conversion: No

23 Floor 3 - Bedroom



Dimensions: 13'3" x 15'4"
Area: 187 sq. ft
Counted as living area: Yes

Heated: Yes
Finished: Yes
Enclosed: Yes
Contiguous: Yes
Permitted: Yes
Wet space: No
Addition: No
Conversion: No