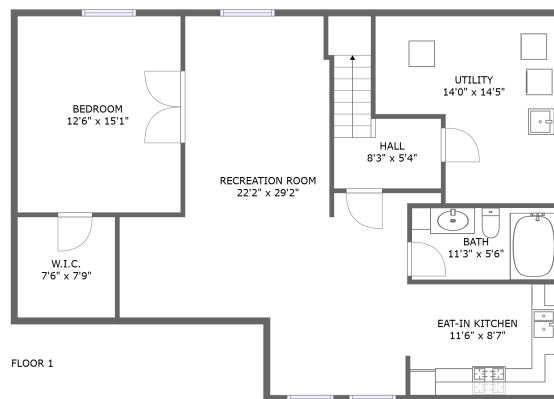
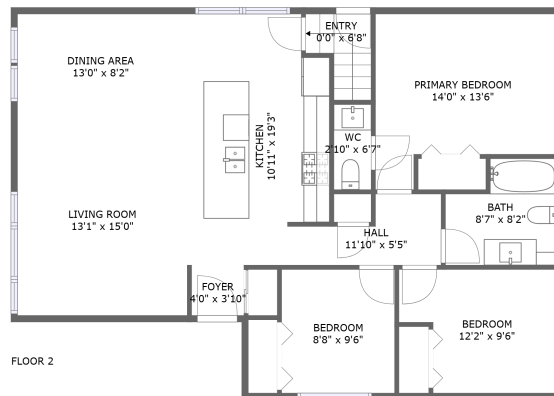



# 2226 Tawney Road, Hawthorne Meadows, Urbandale, Ottawa, Ontario, Canada, K1G 1C6



## Property summary


 **0** Garages

 **4** Bedrooms

 **2** Bathrooms

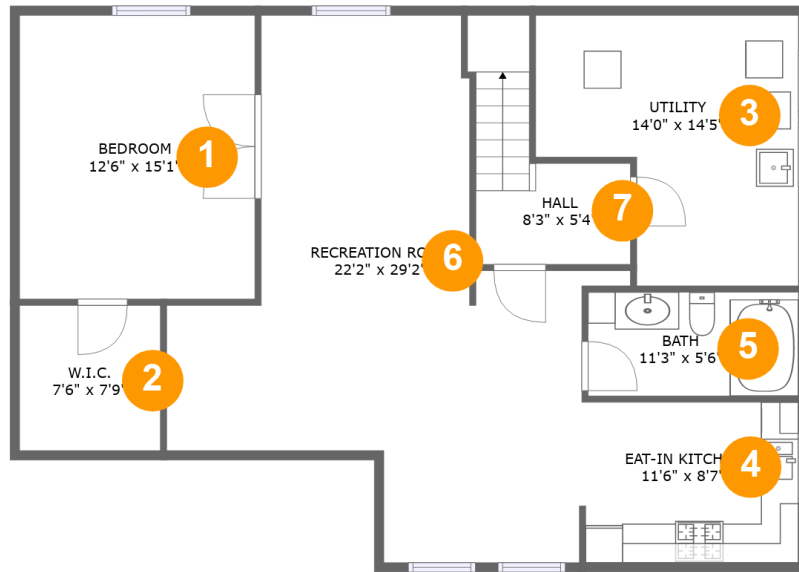
 **1** Half baths

 **2** Floors

 **2,165**  
Gross living  
area sqft

 **2,344**  
Total sqft

**2226 Tawney Road, Hawthorne Meadows, Urbandale, Ottawa, Ontario, Canada, K1G 1C6**



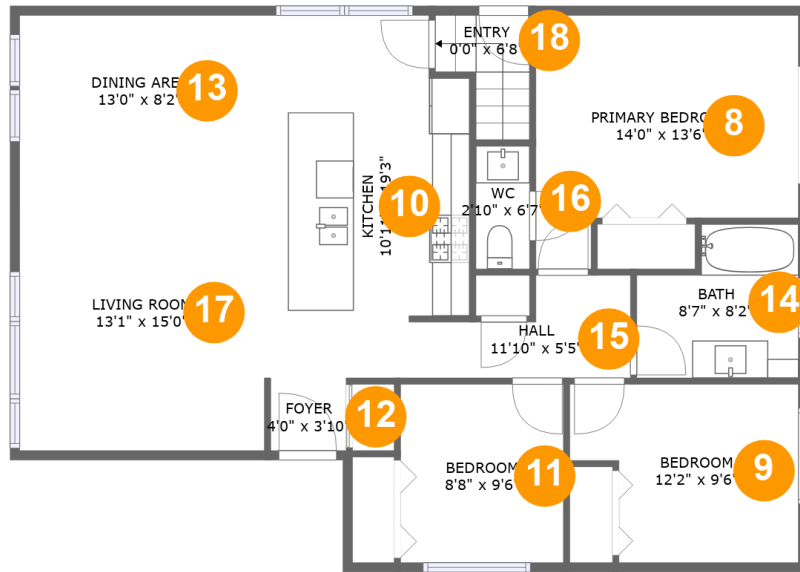
**Room dimensions**

Floor 1

Total sqft: 1167 Living area: 988

#		Dimensions	sqft	Counted as living area
1	Bedroom	12'6" x 15'1"	190 sq. ft	Yes
2	W.I.C.	7'6" x 7'9"	58 sq. ft	Yes
3	Utility	14'0" x 14'5"	165 sq. ft	No
4	Eat-in Kitchen	11'6" x 8'7"	98 sq. ft	Yes
5	Bath	11'3" x 5'6"	62 sq. ft	Yes
6	Recreation Room	22'2" x 29'2"	417 sq. ft	Yes
7	Hall	8'3" x 5'4"	68 sq. ft	Yes

# 2226 Tawney Road, Hawthorne Meadows, Urbandale, Ottawa, Ontario, Canada, K1G 1C6



## Room dimensions

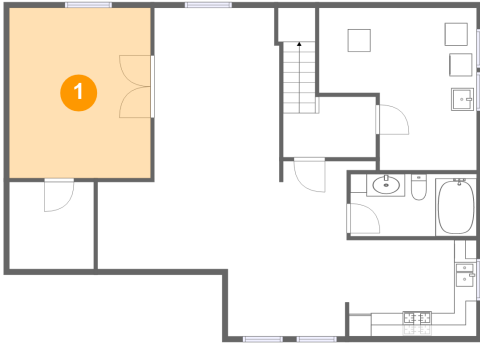
Floor 2

Total sqft: 1177 Living area: 1177

#		Dimensions	sqft	Counted as living area
8	Primary Bedroom	14'0" x 13'6"	159 sq. ft	Yes
9	Bedroom	12'2" x 9'6"	102 sq. ft	Yes
10	Kitchen	10'11" x 19'3"	194 sq. ft	Yes
11	Bedroom	8'8" x 9'6"	83 sq. ft	Yes
12	Foyer	4'0" x 3'10"	16 sq. ft	Yes
13	Dining Area	13'0" x 8'2"	107 sq. ft	Yes
14	Bath	8'7" x 8'2"	61 sq. ft	Yes
15	Hall	11'10" x 5'5"	48 sq. ft	Yes
16	WC	2'10" x 6'7"	19 sq. ft	Yes
17	Living Room	13'1" x 15'0"	196 sq. ft	Yes
18	Entry	0'0" x 6'8"	26 sq. ft	Yes

**2226 Tawney Road, Hawthorne Meadows, Urbandale,  
Ottawa, Ontario, Canada, K1G 1C6**

## 1 Floor 1 - Bedroom



**Dimensions:** 12'6" x 15'1"  
**Area:** 190 sq. ft  
**Counted as living area:** Yes

**Heated:** Yes  
**Finished:** Yes  
**Enclosed:** Yes  
**Contiguous:** Yes  
**Permitted:** Yes  
**Wet space:** No  
**Addition:** No  
**Conversion:** No

## 2 Floor 1 - W.I.C.

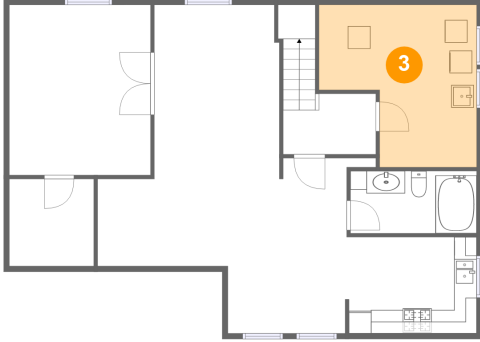


**Dimensions:** 7'6" x 7'9"  
**Area:** 58 sq. ft  
**Counted as living area:** Yes

**Heated:** Yes  
**Finished:** Yes  
**Enclosed:** Yes  
**Contiguous:** Yes  
**Permitted:** Yes  
**Wet space:** No  
**Addition:** No  
**Conversion:** No

2226 Tawney Road, Hawthorne Meadows, Urbandale,  
Ottawa, Ontario, Canada, K1G 1C6

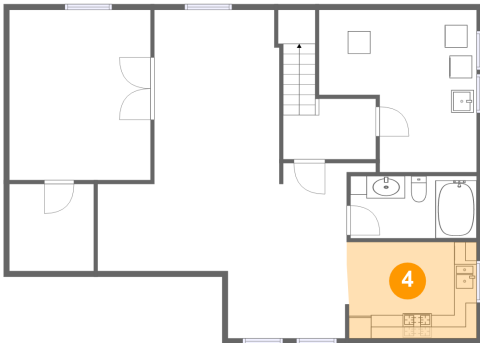
### 3 Floor 1 - Utility



Dimensions: 14'0" x 14'5"  
Area: 165 sq. ft  
Counted as living area: No

Heated: Yes  
Finished: No  
Enclosed: Yes  
Contiguous: Yes  
Permitted: Yes  
Wet space: No  
Addition: No  
Conversion: No

### 4 Floor 1 - Eat-in Kitchen



Dimensions: 11'6" x 8'7"  
Area: 98 sq. ft  
Counted as living area: Yes

Heated: Yes  
Finished: Yes  
Enclosed: Yes  
Contiguous: Yes  
Permitted: Yes  
Wet space: No  
Addition: No  
Conversion: No

### 5 Floor 1 - Bath

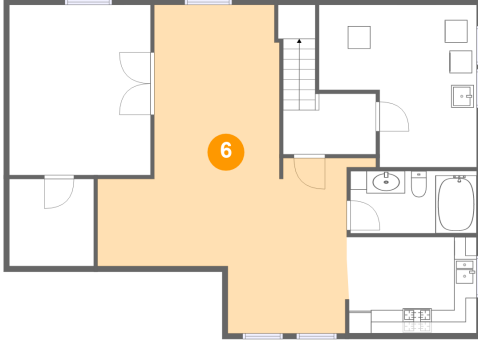


Dimensions: 11'3" x 5'6"  
Area: 62 sq. ft  
Counted as living area: Yes

Heated: Yes  
Finished: Yes  
Enclosed: Yes  
Contiguous: Yes  
Permitted: Yes  
Wet space: Yes  
Addition: No  
Conversion: No

2226 Tawney Road, Hawthorne Meadows, Urbandale,  
Ottawa, Ontario, Canada, K1G 1C6

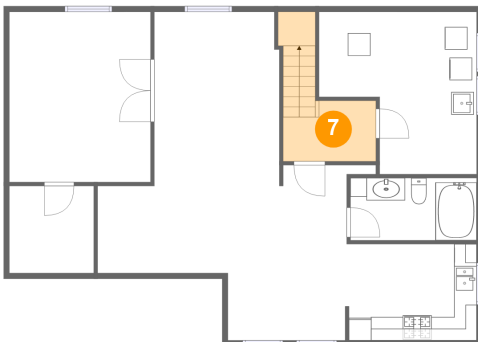
## 6 Floor 1 - Recreation Room



Dimensions: 22'2" x 29'2"  
Area: 417 sq. ft  
Counted as living area: Yes

Heated: Yes  
Finished: Yes  
Enclosed: Yes  
Contiguous: Yes  
Permitted: Yes  
Wet space: No  
Addition: No  
Conversion: No

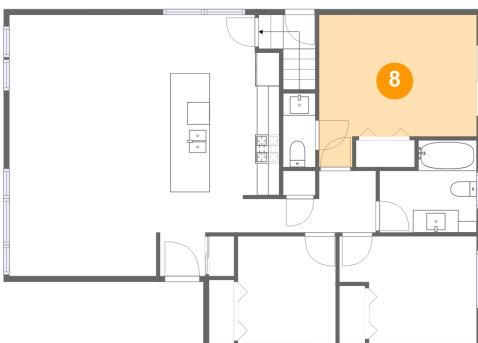
## 7 Floor 1 - Hall



Dimensions: 8'3" x 5'4"  
Area: 68 sq. ft  
Counted as living area: Yes

Heated: Yes  
Finished: Yes  
Enclosed: Yes  
Contiguous: Yes  
Permitted: Yes  
Wet space: No  
Addition: No  
Conversion: No

## 8 Floor 2 - Primary Bedroom

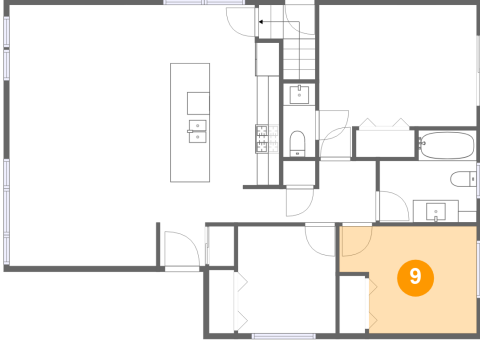


Dimensions: 14'0" x 13'6"  
Area: 159 sq. ft  
Counted as living area: Yes

Heated: Yes  
Finished: Yes  
Enclosed: Yes  
Contiguous: Yes  
Permitted: Yes  
Wet space: No  
Addition: No  
Conversion: No

2226 Tawney Road, Hawthorne Meadows, Urbandale,  
Ottawa, Ontario, Canada, K1G 1C6

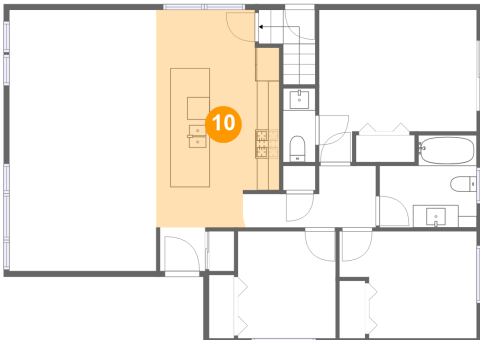
**9** Floor 2 - Bedroom



Dimensions: 12'2" x 9'6"  
Area: 102 sq. ft  
Counted as living area: Yes

Heated: Yes  
Finished: Yes  
Enclosed: Yes  
Contiguous: Yes  
Permitted: Yes  
Wet space: No  
Addition: No  
Conversion: No

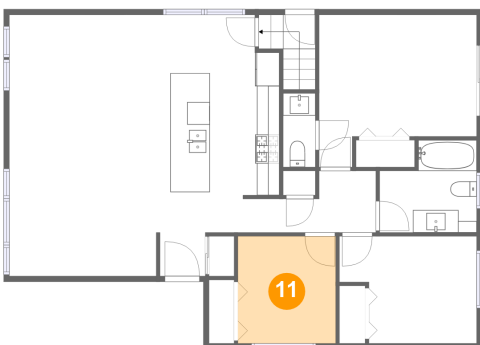
**10** Floor 2 - Kitchen



Dimensions: 10'11" x 19'3"  
Area: 194 sq. ft  
Counted as living area: Yes

Heated: Yes  
Finished: Yes  
Enclosed: Yes  
Contiguous: Yes  
Permitted: Yes  
Wet space: No  
Addition: No  
Conversion: No

**11** Floor 2 - Bedroom

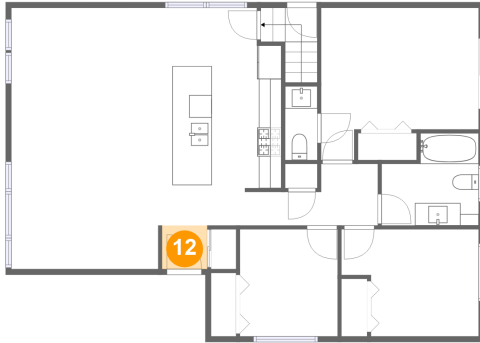


Dimensions: 8'8" x 9'6"  
Area: 83 sq. ft  
Counted as living area: Yes

Heated: Yes  
Finished: Yes  
Enclosed: Yes  
Contiguous: Yes  
Permitted: Yes  
Wet space: No  
Addition: No  
Conversion: No

**2226 Tawney Road, Hawthorne Meadows, Urbandale,  
Ottawa, Ontario, Canada, K1G 1C6**

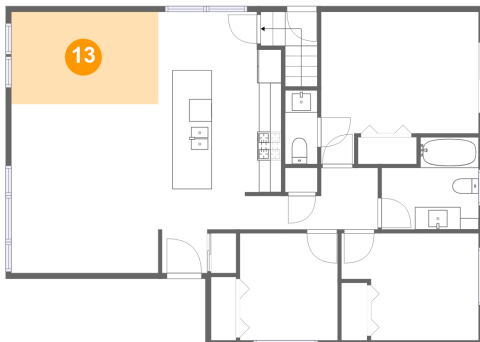
**12 Floor 2 - Foyer**



Dimensions: 4'0" x 3'10"  
Area: 16 sq. ft  
Counted as living area: Yes

Heated: Yes  
Finished: Yes  
Enclosed: Yes  
Contiguous: Yes  
Permitted: Yes  
Wet space: No  
Addition: No  
Conversion: No

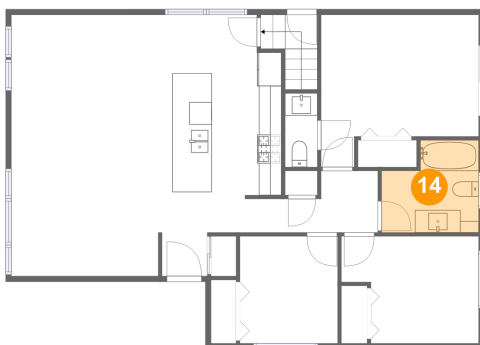
**13 Floor 2 - Dining Area**



Dimensions: 13'0" x 8'2"  
Area: 107 sq. ft  
Counted as living area: Yes

Heated: Yes  
Finished: Yes  
Enclosed: Yes  
Contiguous: Yes  
Permitted: Yes  
Wet space: No  
Addition: No  
Conversion: No

**14 Floor 2 - Bath**



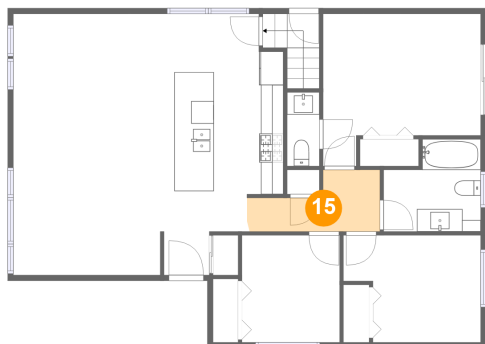
Dimensions: 8'7" x 8'2"  
Area: 61 sq. ft  
Counted as living area: Yes

Heated: Yes  
Finished: Yes  
Enclosed: Yes  
Contiguous: Yes  
Permitted: Yes  
Wet space: Yes  
Addition: No  
Conversion: No



2226 Tawney Road, Hawthorne Meadows, Urbandale,  
Ottawa, Ontario, Canada, K1G 1C6

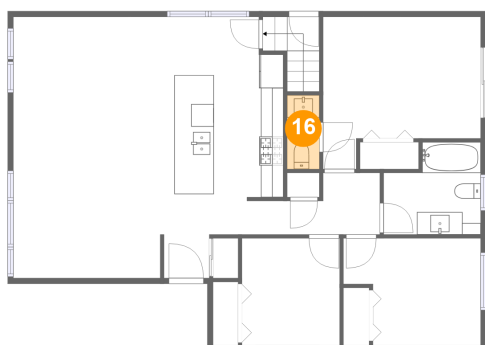
### 15 Floor 2 - Hall



Dimensions: 11'10" x 5'5"  
Area: 48 sq. ft  
Counted as living area: Yes

Heated: Yes  
Finished: Yes  
Enclosed: Yes  
Contiguous: Yes  
Permitted: Yes  
Wet space: No  
Addition: No  
Conversion: No

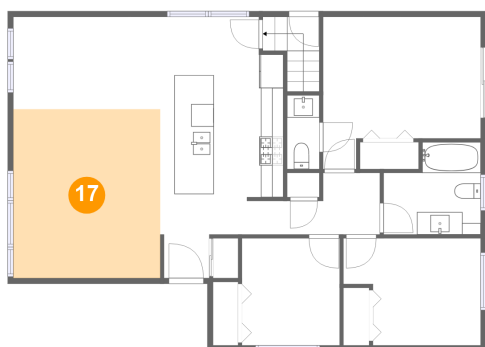
### 16 Floor 2 - WC



Dimensions: 2'10" x 6'7"  
Area: 19 sq. ft  
Counted as living area: Yes

Heated: Yes  
Finished: Yes  
Enclosed: Yes  
Contiguous: Yes  
Permitted: Yes  
Wet space: Yes  
Addition: No  
Conversion: No

### 17 Floor 2 - Living Room

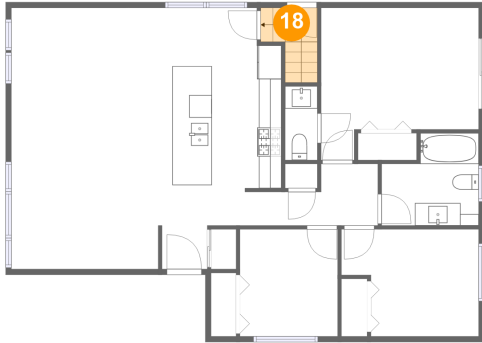


Dimensions: 13'1" x 15'0"  
Area: 196 sq. ft  
Counted as living area: Yes

Heated: Yes  
Finished: Yes  
Enclosed: Yes  
Contiguous: Yes  
Permitted: Yes  
Wet space: No  
Addition: No  
Conversion: No

**2226 Tawney Road, Hawthorne Meadows, Urbandale,  
Ottawa, Ontario, Canada, K1G 1C6**

**18 Floor 2 - Entry**



**Dimensions: 0'0" x 6'8"**  
**Area: 26 sq. ft**  
**Counted as living area: Yes**

**Heated: Yes**  
**Finished: Yes**  
**Enclosed: Yes**  
**Contiguous: Yes**  
**Permitted: Yes**  
**Wet space: No**  
**Addition: No**  
**Conversion: No**