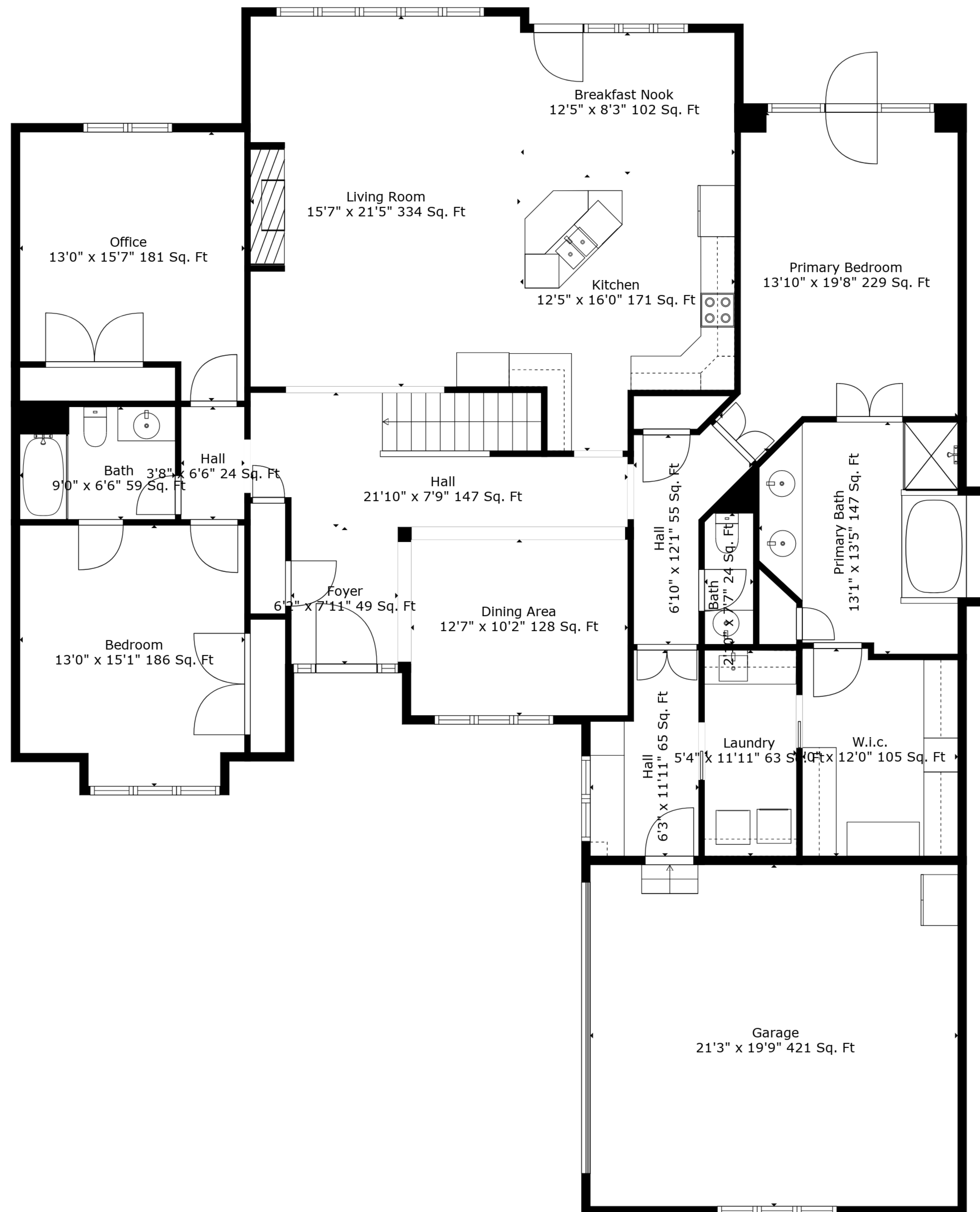


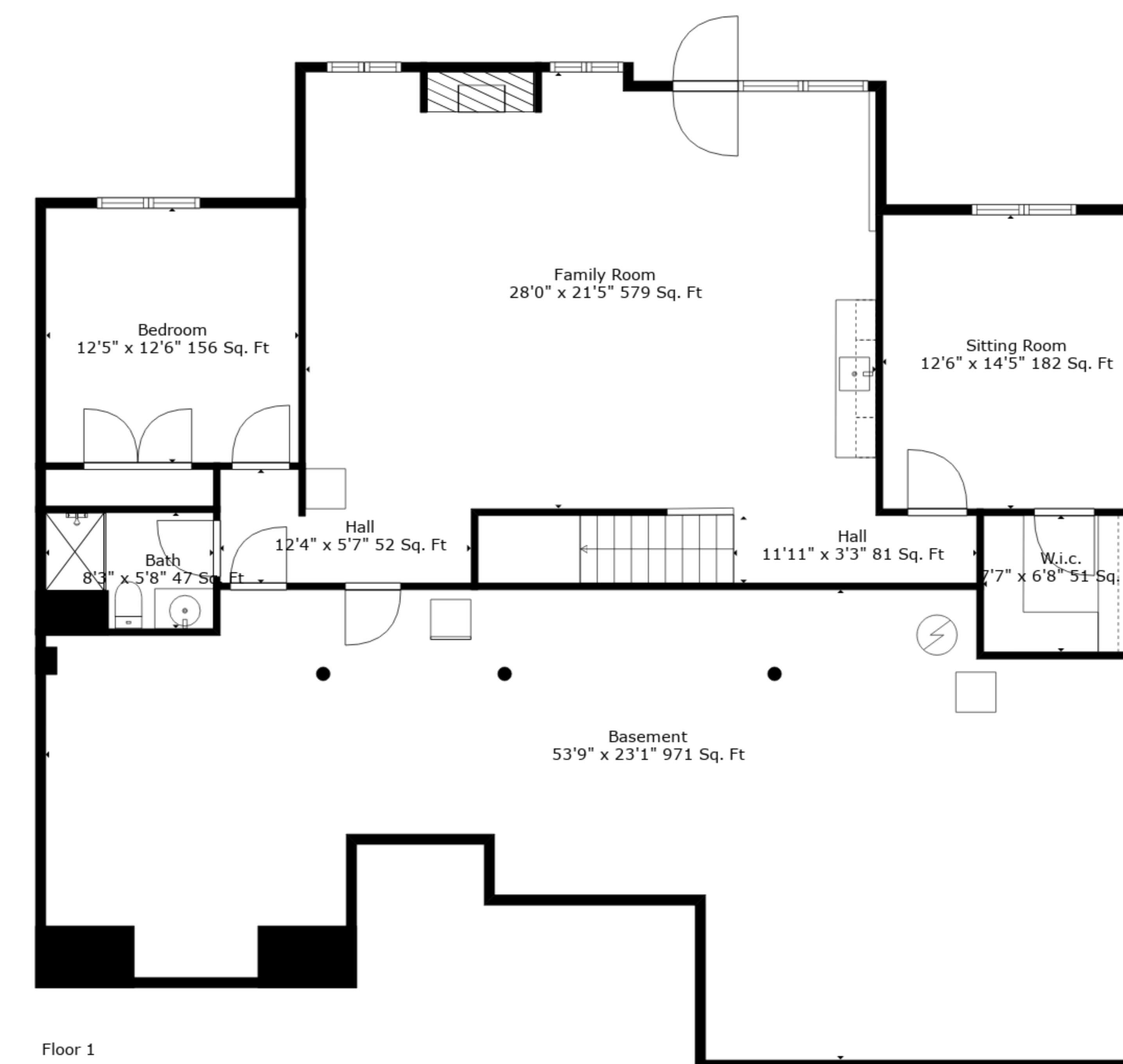
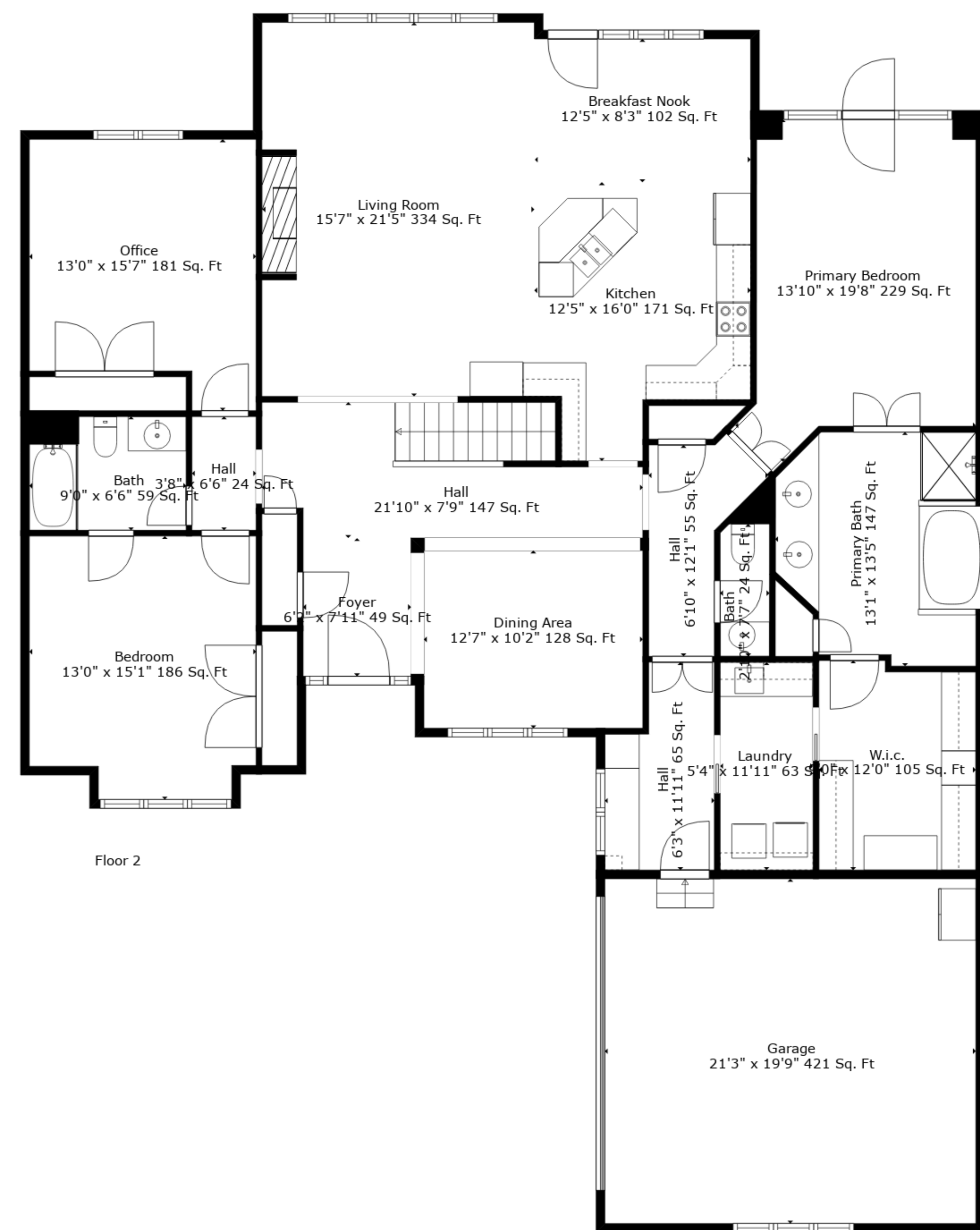
TOTAL: 3450 sq. ft
 BELOW GROUND: 1215 sq. ft, FLOOR 2: 2235 sq. ft
 EXCLUDED AREAS: BASEMENT: 971 sq. ft, GARAGE: 421 sq. ft

Measurements Are Deemed Highly Reliable But Not Guaranteed.



TOTAL: 3450 sq. ft
 BELOW GROUND: 1215 sq. ft, FLOOR 2: 2235 sq. ft
 EXCLUDED AREAS: BASEMENT: 971 sq. ft, GARAGE: 421 sq. ft

Measurements Are Deemed Highly Reliable But Not Guaranteed.



TOTAL: 3450 sq. ft
 BELOW GROUND: 1215 sq. ft, FLOOR 2: 2235 sq. ft
 EXCLUDED AREAS: BASEMENT: 971 sq. ft, GARAGE: 421 sq. ft

Measurements Are Deemed Highly Reliable But Not Guaranteed.