

Home report

608 Hallmark Drive, Martinsburg, Berkeley County, West Virginia, United States, 25403



Total Area: 3932 sq. ft

Below Ground: 1491 sq. ft, Floor 2: 1564 sq. ft, Floor 3: 877 sq. ft

Excluded: Outdoor Patio 417 sq. ft, Garage 632 sq. ft, Outdoor Deck 418 sq. ft, Outdoor Porch 271 sq. ft, Attic 371 sq. ft, Walls: 350 sq. ft

Property summary

 **3** Floors

 **5** Bedrooms

 **3** Bathrooms

Home report

608 Hallmark Drive, Martinsburg, Berkeley County, West Virginia, United States, 25403



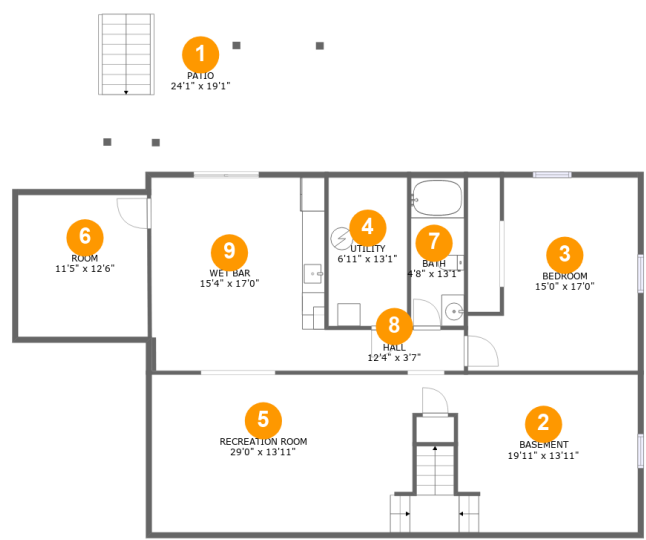
1
Half baths



1
Garages

Home report

608 Hallmark Drive, Martinsburg, Berkeley County, West Virginia, United States, 25403



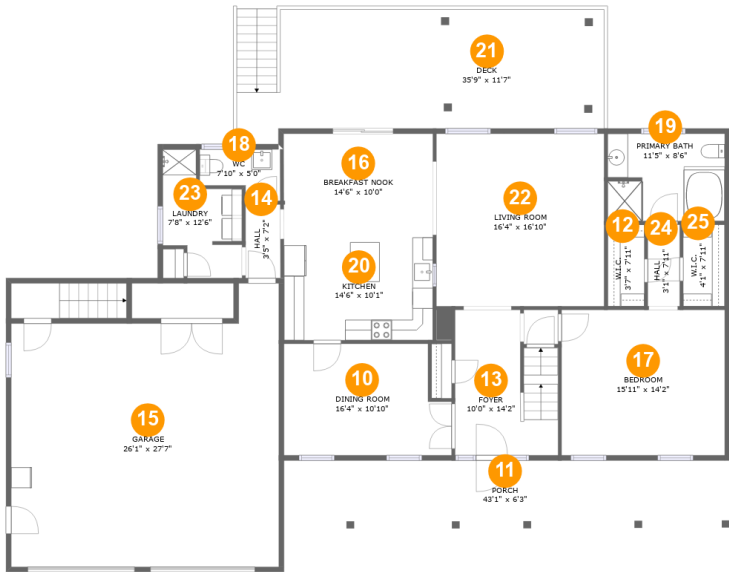
Room dimensions

Floor 1 Below ground Total:1491sqft Excluded: 417sqft

#		Max Dimensions	sqft	Included
1	Patio	24'1" x 19'1"	417 sq. ft	No
2	Basement	19'11" x 13'11"	228 sq. ft	Yes
3	Bedroom	15'0" x 17'0"	217 sq. ft	Yes
4	Utility	6'11" x 13'1"	91 sq. ft	Yes
5	Recreation Room	29'0" x 13'11"	369 sq. ft	Yes
6	Room	11'5" x 12'6"	143 sq. ft	Yes
7	Bath	4'8" x 13'1"	61 sq. ft	Yes
8	Hall	12'4" x 3'7"	44 sq. ft	Yes
9	Wet Bar	15'4" x 17'0"	261 sq. ft	Yes

Home report

608 Hallmark Drive, Martinsburg, Berkeley County, West Virginia, United States, 25403



Room dimensions

Floor 2 Total:1564sqft Excluded: 1321sqft

#		Max Dimensions	sqft	Included
10	Dining Room	16'4" x 10'10"	164 sq. ft	Yes
11	Porch	43'1" x 6'3"	271 sq. ft	No
12	W.I.C.	3'7" x 7'11"	28 sq. ft	Yes
13	Foyer	10'0" x 14'2"	127 sq. ft	Yes
14	Hall	3'5" x 7'2"	24 sq. ft	Yes
15	Garage	26'1" x 27'7"	632 sq. ft	No
16	Breakfast Nook	14'6" x 10'0"	145 sq. ft	Yes
17	Bedroom	15'11" x 14'2"	225 sq. ft	Yes
18	WC	7'10" x 5'0"	33 sq. ft	Yes
19	Primary Bath	11'5" x 8'6"	96 sq. ft	Yes
20	Kitchen	14'6" x 10'1"	146 sq. ft	Yes

Home report

608 Hallmark Drive, Martinsburg, Berkeley County, West Virginia, United States, 25403

#		Max Dimensions	sqft	Included
21	Deck	35'9" x 11'7"	418 sq. ft	No
22	Living Room	16'4" x 16'10"	274 sq. ft	Yes
23	Laundry	7'8" x 12'6"	71 sq. ft	Yes
24	Hall	3'1" x 7'11"	25 sq. ft	Yes
25	W.I.C.	4'1" x 7'11"	32 sq. ft	Yes

608 Hallmark Drive, Martinsburg, Berkeley County, West Virginia, United States, 25403



Room dimensions

Floor 3 Total:877sqft Excluded: 371sqft

#		Max Dimensions	sqft	Included
26	Bedroom	14'6" x 19'10"	246 sq. ft	Yes
27	Hall	11'9" x 14'5"	76 sq. ft	Yes
28	W.I.C.	4'11" x 5'2"	26 sq. ft	Yes
29	Bedroom	11'9" x 13'0"	153 sq. ft	Yes
30	W.I.C.	8'0" x 5'2"	41 sq. ft	Yes
31	Attic	12'7" x 27'7"	371 sq. ft	No
32	Bedroom	15'11" x 14'5"	205 sq. ft	Yes
33	Bath	8'2" x 8'0"	64 sq. ft	Yes

608 Hallmark Drive, Martinsburg, Berkeley County, West Virginia, United States, 25403

1 Floor 1 - Patio



Max Dimensions: 24'1" x 19'1"
Calculated Area: 417 sq. ft
Included: No

Heated: No
Finished: Yes
Enclosed: No
Contiguous: Yes
Permitted: Yes
Wet space: No
Addition: No
Conversion: No

2 Floor 1 - Basement

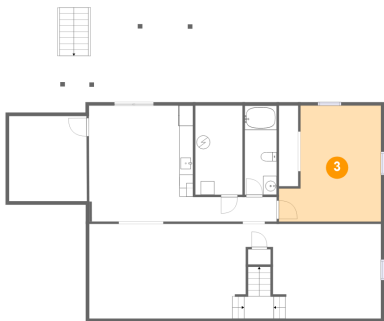


Max Dimensions: 19'11" x 13'11"
Calculated Area: 228 sq. ft
Included: Yes

Heated: Yes
Finished: Yes
Enclosed: Yes
Contiguous: Yes
Permitted: Yes
Wet space: No
Addition: No
Conversion: No

608 Hallmark Drive, Martinsburg, Berkeley County, West Virginia, United States, 25403

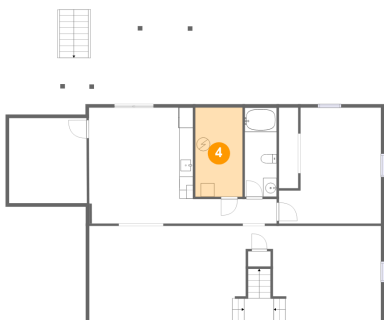
3 Floor 1 - Bedroom



Max Dimensions: 15'0" x 17'0"
Calculated Area: 217 sq. ft
Included: Yes

Heated: Yes
Finished: Yes
Enclosed: Yes
Contiguous: Yes
Permitted: Yes
Wet space: No
Addition: No
Conversion: No

4 Floor 1 - Utility



Max Dimensions: 6'11" x 13'1"
Calculated Area: 91 sq. ft
Included: Yes

Heated: Yes
Finished: Yes
Enclosed: Yes
Contiguous: Yes
Permitted: Yes
Wet space: No
Addition: No
Conversion: No

5 Floor 1 - Recreation Room

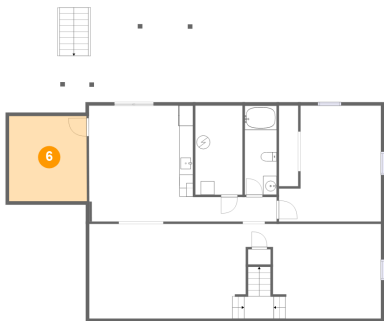


Max Dimensions: 29'0" x 13'11"
Calculated Area: 369 sq. ft
Included: Yes

Heated: Yes
Finished: Yes
Enclosed: Yes
Contiguous: Yes
Permitted: Yes
Wet space: No
Addition: No
Conversion: No

608 Hallmark Drive, Martinsburg, Berkeley County, West Virginia, United States, 25403

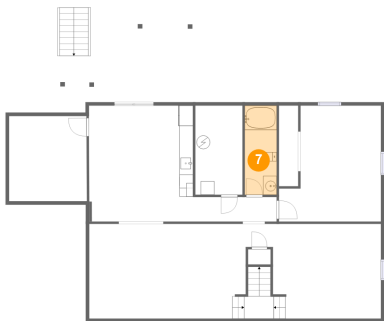
6 Floor 1 - Room



Max Dimensions: 11'5" x 12'6"
Calculated Area: 143 sq. ft
Included: Yes

Heated: Yes
Finished: Yes
Enclosed: Yes
Contiguous: Yes
Permitted: Yes
Wet space: No
Addition: No
Conversion: No

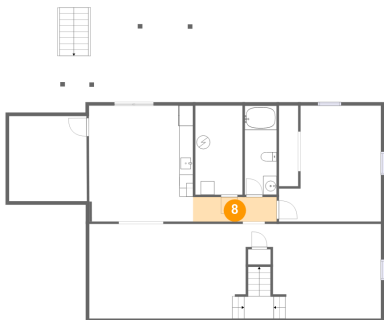
7 Floor 1 - Bath



Max Dimensions: 4'8" x 13'1"
Calculated Area: 61 sq. ft
Included: Yes

Heated: Yes
Finished: Yes
Enclosed: Yes
Contiguous: Yes
Permitted: Yes
Wet space: Yes
Addition: No
Conversion: No

8 Floor 1 - Hall

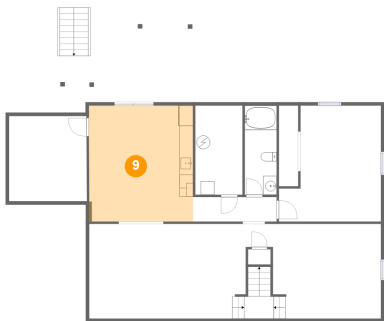


Max Dimensions: 12'4" x 3'7"
Calculated Area: 44 sq. ft
Included: Yes

Heated: Yes
Finished: Yes
Enclosed: Yes
Contiguous: Yes
Permitted: Yes
Wet space: No
Addition: No
Conversion: No

608 Hallmark Drive, Martinsburg, Berkeley County, West Virginia, United States, 25403

9 Floor 1 - Wet Bar



Max Dimensions: 15'4" x 17'0"
Calculated Area: 261 sq. ft
Included: Yes

Heated: Yes
Finished: Yes
Enclosed: Yes
Contiguous: Yes
Permitted: Yes
Wet space: No
Addition: No
Conversion: No

10 Floor 2 - Dining Room



Max Dimensions: 16'4" x 10'10"
Calculated Area: 164 sq. ft
Included: Yes

Heated: Yes
Finished: Yes
Enclosed: Yes
Contiguous: Yes
Permitted: Yes
Wet space: No
Addition: No
Conversion: No

11 Floor 2 - Porch



Max Dimensions: 43'1" x 6'3"
Calculated Area: 271 sq. ft
Included: No

Heated: No
Finished: Yes
Enclosed: No
Contiguous: Yes
Permitted: Yes
Wet space: No
Addition: No
Conversion: No

608 Hallmark Drive, Martinsburg, Berkeley County, West Virginia, United States, 25403

12 Floor 2 - W.I.C.



Max Dimensions: 3'7" x 7'11"
Calculated Area: 28 sq. ft
Included: Yes

Heated: Yes
Finished: Yes
Enclosed: Yes
Contiguous: Yes
Permitted: Yes
Wet space: No
Addition: No
Conversion: No

13 Floor 2 - Foyer



Max Dimensions: 10'0" x 14'2"
Calculated Area: 127 sq. ft
Included: Yes

Heated: Yes
Finished: Yes
Enclosed: Yes
Contiguous: Yes
Permitted: Yes
Wet space: No
Addition: No
Conversion: No

14 Floor 2 - Hall



Max Dimensions: 3'5" x 7'2"
Calculated Area: 24 sq. ft
Included: Yes

Heated: Yes
Finished: Yes
Enclosed: Yes
Contiguous: Yes
Permitted: Yes
Wet space: No
Addition: No
Conversion: No

608 Hallmark Drive, Martinsburg, Berkeley County, West Virginia, United States, 25403

15 Floor 2 - Garage



Max Dimensions: 26'1" x 27'7"
Calculated Area: 632 sq. ft
Included: No

Heated: No
Finished: No
Enclosed: Yes
Contiguous: Yes
Permitted: Yes
Wet space: No
Addition: No
Conversion: No

16 Floor 2 - Breakfast Nook



Max Dimensions: 14'6" x 10'0"
Calculated Area: 145 sq. ft
Included: Yes

Heated: Yes
Finished: Yes
Enclosed: Yes
Contiguous: Yes
Permitted: Yes
Wet space: No
Addition: No
Conversion: No

17 Floor 2 - Bedroom



Max Dimensions: 15'11" x 14'2"
Calculated Area: 225 sq. ft
Included: Yes

Heated: Yes
Finished: Yes
Enclosed: Yes
Contiguous: Yes
Permitted: Yes
Wet space: No
Addition: No
Conversion: No

18 Floor 2 - WC



Max Dimensions: 7'10" x 5'0"
Calculated Area: 33 sq. ft
Included: Yes

Heated: Yes
Finished: Yes
Enclosed: Yes
Contiguous: Yes
Permitted: Yes
Wet space: Yes
Addition: No
Conversion: No

19 Floor 2 - Primary Bath



Max Dimensions: 11'5" x 8'6"
Calculated Area: 96 sq. ft
Included: Yes

Heated: Yes
Finished: Yes
Enclosed: Yes
Contiguous: Yes
Permitted: Yes
Wet space: Yes
Addition: No
Conversion: No

20 Floor 2 - Kitchen



Max Dimensions: 14'6" x 10'1"
Calculated Area: 146 sq. ft
Included: Yes

Heated: Yes
Finished: Yes
Enclosed: Yes
Contiguous: Yes
Permitted: Yes
Wet space: No
Addition: No
Conversion: No

608 Hallmark Drive, Martinsburg, Berkeley County, West Virginia, United States, 25403

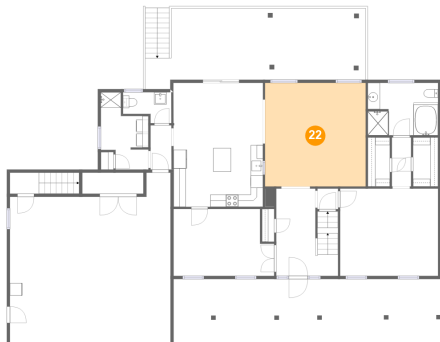
21 Floor 2 - Deck



Max Dimensions: 35'9" x 11'7"
Calculated Area: 418 sq. ft
Included: No

Heated: No
Finished: Yes
Enclosed: No
Contiguous: Yes
Permitted: Yes
Wet space: No
Addition: No
Conversion: No

22 Floor 2 - Living Room



Max Dimensions: 16'4" x 16'10"
Calculated Area: 274 sq. ft
Included: Yes

Heated: Yes
Finished: Yes
Enclosed: Yes
Contiguous: Yes
Permitted: Yes
Wet space: No
Addition: No
Conversion: No

23 Floor 2 - Laundry



Max Dimensions: 7'8" x 12'6"
Calculated Area: 71 sq. ft
Included: Yes

Heated: Yes
Finished: Yes
Enclosed: Yes
Contiguous: Yes
Permitted: Yes
Wet space: No
Addition: No
Conversion: No

608 Hallmark Drive, Martinsburg, Berkeley County, West Virginia, United States, 25403

24 Floor 2 - Hall



Max Dimensions: 3'1" x 7'11"
Calculated Area: 25 sq. ft
Included: Yes

Heated: Yes
Finished: Yes
Enclosed: Yes
Contiguous: Yes
Permitted: Yes
Wet space: No
Addition: No
Conversion: No

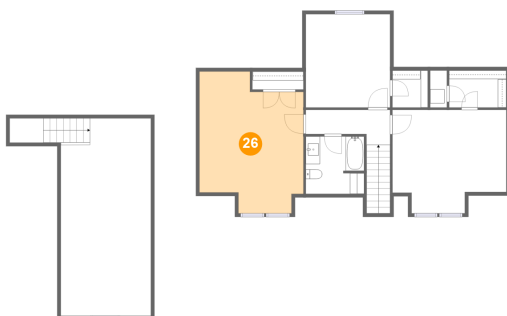
25 Floor 2 - W.I.C.



Max Dimensions: 4'1" x 7'11"
Calculated Area: 32 sq. ft
Included: Yes

Heated: Yes
Finished: Yes
Enclosed: Yes
Contiguous: Yes
Permitted: Yes
Wet space: No
Addition: No
Conversion: No

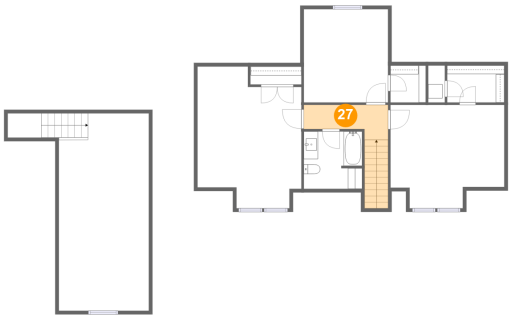
26 Floor 3 - Bedroom



Max Dimensions: 14'6" x 19'10"
Calculated Area: 246 sq. ft
Included: Yes

Heated: Yes
Finished: Yes
Enclosed: Yes
Contiguous: Yes
Permitted: Yes
Wet space: No
Addition: No
Conversion: No

27 Floor 3 - Hall



Max Dimensions: 11'9" x 14'5"
Calculated Area: 76 sq. ft
Included: Yes

Heated: Yes
Finished: Yes
Enclosed: Yes
Contiguous: Yes
Permitted: Yes
Wet space: No
Addition: No
Conversion: No

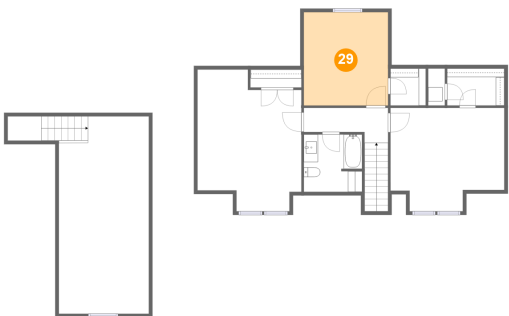
28 Floor 3 - W.I.C.



Max Dimensions: 4'11" x 5'2"
Calculated Area: 26 sq. ft
Included: Yes

Heated: Yes
Finished: Yes
Enclosed: Yes
Contiguous: Yes
Permitted: Yes
Wet space: No
Addition: No
Conversion: No

29 Floor 3 - Bedroom



Max Dimensions: 11'9" x 13'0"
Calculated Area: 153 sq. ft
Included: Yes

Heated: Yes
Finished: Yes
Enclosed: Yes
Contiguous: Yes
Permitted: Yes
Wet space: No
Addition: No
Conversion: No

608 Hallmark Drive, Martinsburg, Berkeley County, West Virginia, United States, 25403

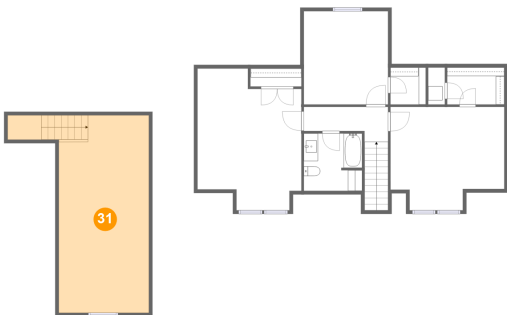
30 Floor 3 - W.I.C.



Max Dimensions: 8'0" x 5'2"
Calculated Area: 41 sq. ft
Included: Yes

Heated: Yes
Finished: Yes
Enclosed: Yes
Contiguous: Yes
Permitted: Yes
Wet space: No
Addition: No
Conversion: No

31 Floor 3 - Attic



Max Dimensions: 12'7" x 27'7"
Calculated Area: 371 sq. ft
Included: No

Heated: No
Finished: No
Enclosed: Yes
Contiguous: Yes
Permitted: Yes
Wet space: No
Addition: No
Conversion: No

32 Floor 3 - Bedroom



Max Dimensions: 15'11" x 14'5"
Calculated Area: 205 sq. ft
Included: Yes

Heated: Yes
Finished: Yes
Enclosed: Yes
Contiguous: Yes
Permitted: Yes
Wet space: No
Addition: No
Conversion: No

608 Hallmark Drive, Martinsburg, Berkeley County, West Virginia, United States, 25403

33 Floor 3 - Bath



Max Dimensions: 8'2" x 8'0"
Calculated Area: 64 sq. ft
Included: Yes

Heated: Yes
Finished: Yes
Enclosed: Yes
Contiguous: Yes
Permitted: Yes
Wet space: Yes
Addition: No
Conversion: No