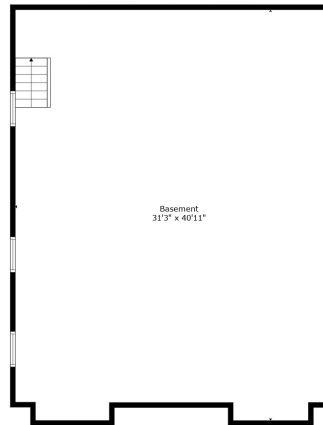




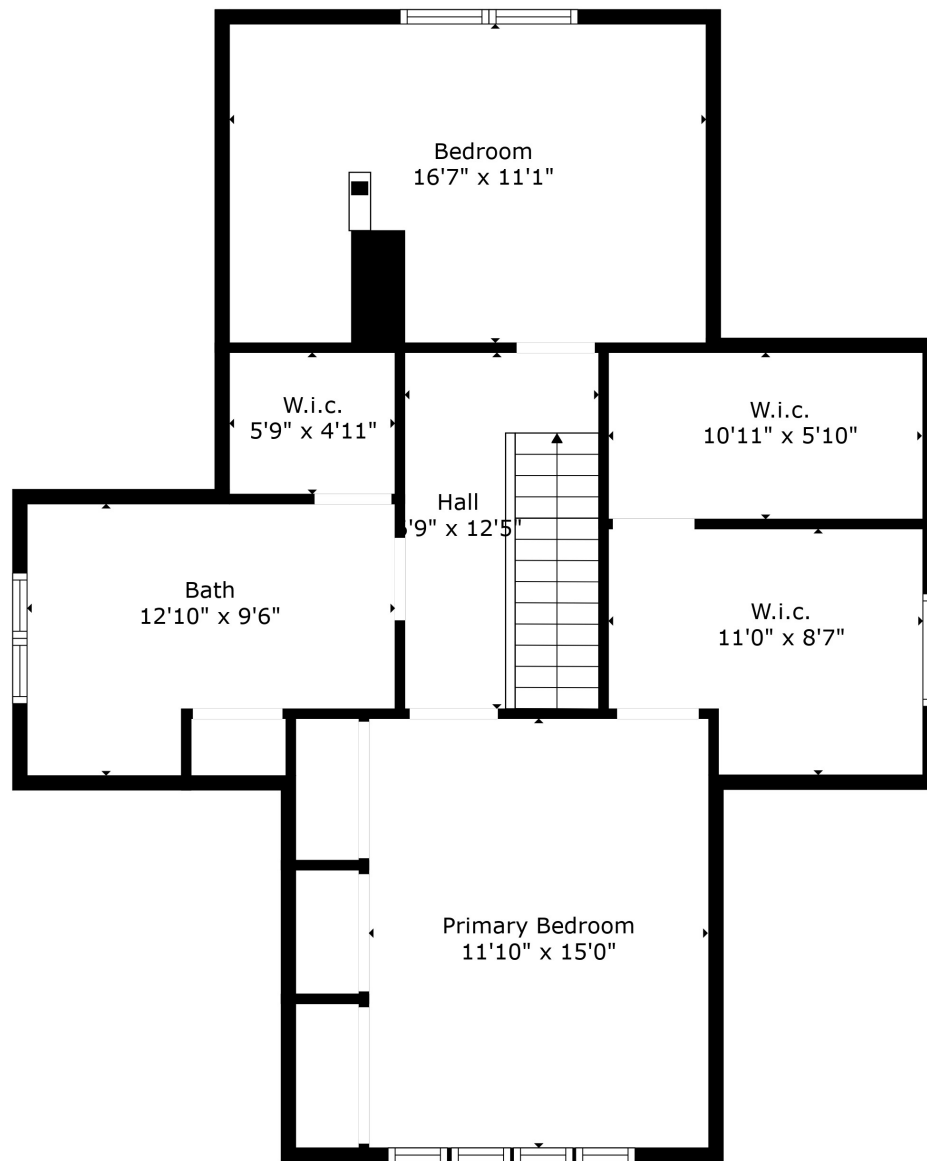
Floor 2

Floor 3



Floor 1

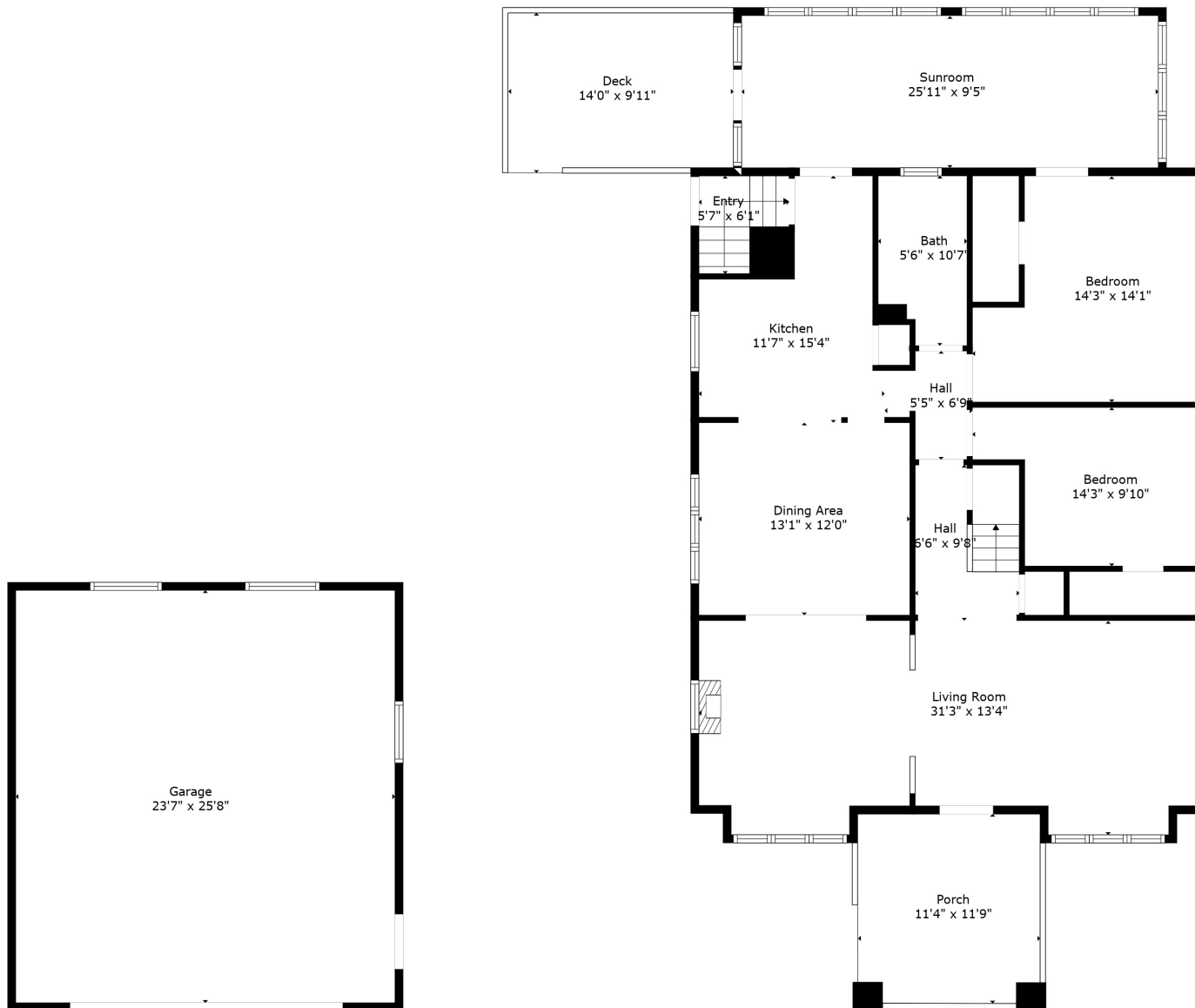
**TOTAL: 3495 sq. ft**  
 BELOW GROUND: 1251 sq. ft, FLOOR 2: 1510 sq. ft, FLOOR 3: 734 sq. ft  
 EXCLUDED AREAS: GARAGE: 605 sq. ft, PORCH: 134 sq. ft, DECK: 139 sq. ft,  
 LOW CEILING: 68 sq. ft



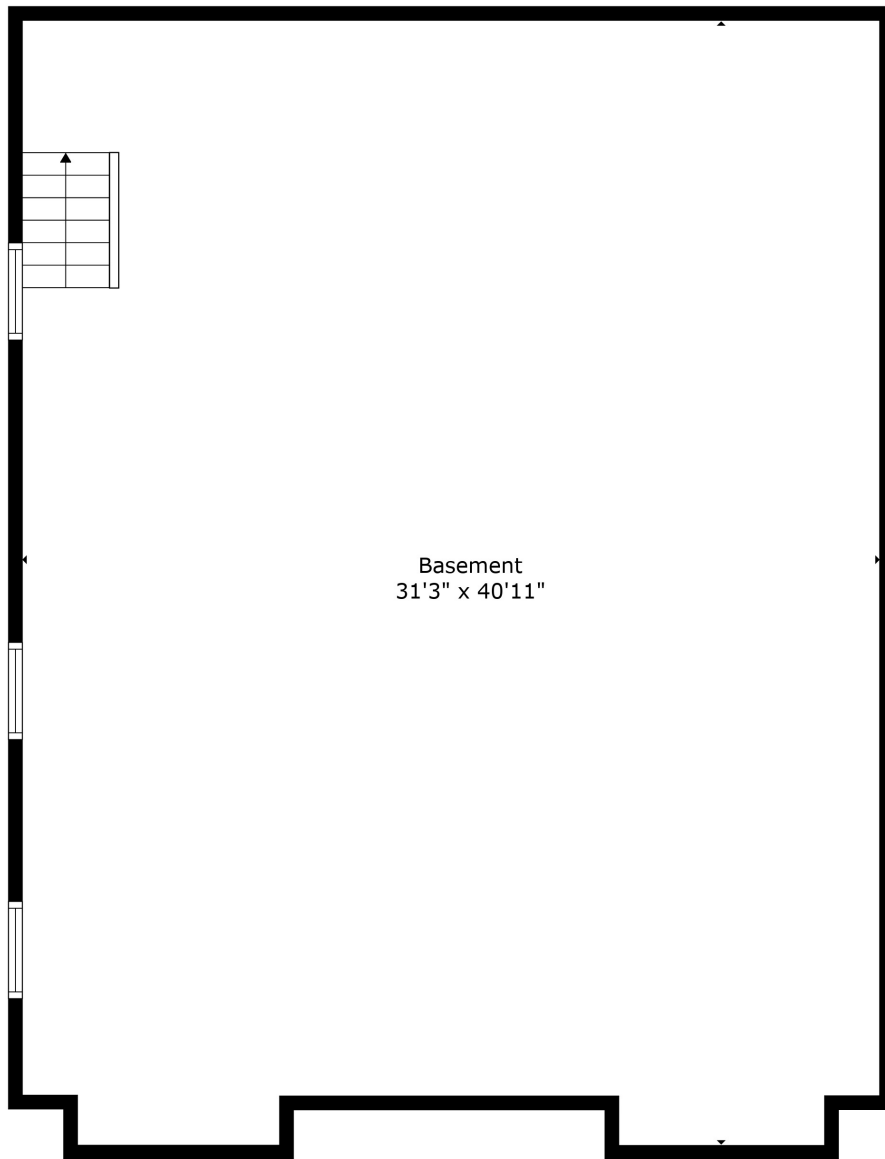
**TOTAL: 3495 sq. ft**

BELOW GROUND: 1251 sq. ft, FLOOR 2: 1510 sq. ft, FLOOR 3: 734 sq. ft  
EXCLUDED AREAS: GARAGE: 605 sq. ft, PORCH: 134 sq. ft, DECK: 139 sq. ft,  
LOW CEILING: 68 sq. ft

Created By Nordy Photography. Calculations Deemed Highly Reliable But Not Guaranteed.



**TOTAL: 3495 sq. ft**  
 BELOW GROUND: 1251 sq. ft, FLOOR 2: 1510 sq. ft, FLOOR 3: 734 sq. ft  
 EXCLUDED AREAS: GARAGE: 605 sq. ft, PORCH: 134 sq. ft, DECK: 139 sq. ft,  
 LOW CEILING: 68 sq. ft



Basement  
31'3" x 40'11"

**TOTAL: 3495 sq. ft**  
BELOW GROUND: 1251 sq. ft, FLOOR 2: 1510 sq. ft, FLOOR 3: 734 sq. ft  
EXCLUDED AREAS: GARAGE: 605 sq. ft, PORCH: 134 sq. ft, DECK: 139 sq. ft,  
LOW CEILING: 68 sq. ft

Created By Nordy Photography. Calculations Deemed Highly Reliable But Not Guaranteed.