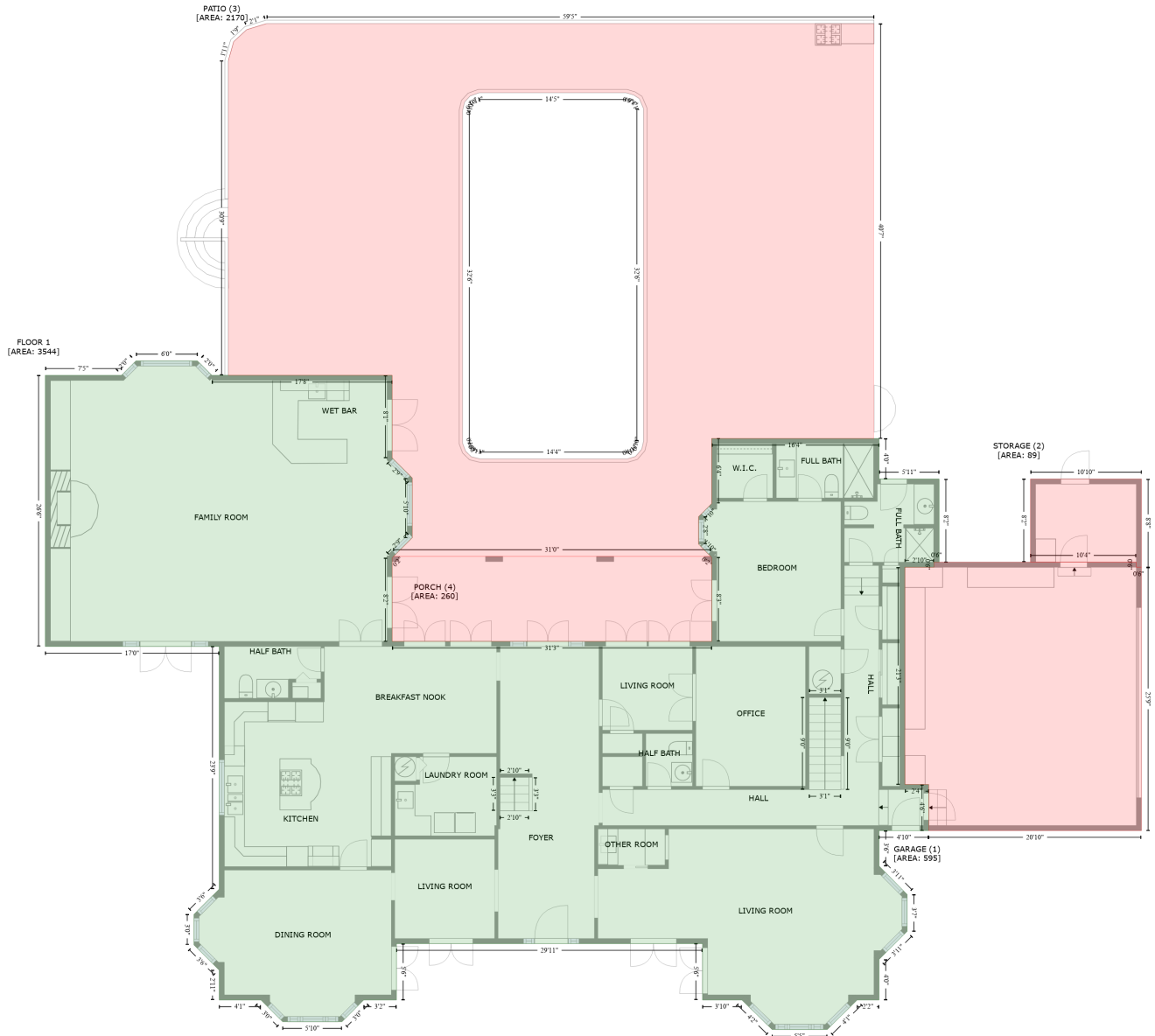


# 312 Eastleigh Drive, Belleair, Pinellas County, Florida, United States, 33756

Gross Living Area: 5643 sq. ft



Space	Area (sq. ft)	Calculation
FLOOR 1 (Living area)	3544	Coordinate Polygon Area Algorithm using inches $-((173.6 + 190.5) * (419.2 - 436.1) + (190.5 + 402.1) * (436.1 - 436.1) + (402.1 + 402.1) * (436.1 - 533) + (402.1 + 425.7) * (533 - 556.7) + (425.7 + 425.7) * (556.7 - 626.8) + (425.7 + 403.6) * (626.8 - 648.7) + (403.6 + 402.1) * (648.7 - 650.4) + (402.1 + 402.1) * (650.4 - 748.4) + (402.1 + 777.3) * (748.4 - 748.4) + (777.3 + 777.3) * (748.4 - 649.8) + (777.3 + 776.1) * (649.8 - 648.7) + (776.1 + 761.9) * (648.7 - 634.4) + (761.9 + 761.9) * (634.4 - 602) + (761.9 + 769.7) * (602 - 594.5) + (769.7 + 777.3) * (594.5 - 586.6) + (777.3 + 777.3) * (586.6 - 510.2) + (777.3 + 973.6) * (510.2 - 510.2) + (973.6 + 973.6) * (510.2 - 557.8) + (973.6 + 1044.2) * (557.8 - 557.8) + (1044.2$

# 312 Eastleigh Drive, Belleair, Pinellas County, Florida, United States, 33756

Gross Living Area: 5643 sq. ft

Space	Area (sq. ft)	Calculation <small>Coordinate Polygon Area Algorithm using inches</small>
		$+ 1044.2) * (557.8 - 655.4) + (1044.2 + 1038.2) * (655.4 - 655.4) + (1038.2 + 1038.2) * (655.4 - 661.4) + (1038.2 + 1003.9) * (661.4 - 661.4) + (1003.9 + 1003.9) * (661.4 - 916.4) + (1003.9 + 1031.9) * (916.4 - 916.4) + (1031.9 + 1031.9) * (916.4 - 970.6) + (1031.9 + 973.6) * (970.6 - 970.6) + (973.6 + 973.6) * (970.6 - 1012.1) + (973.6 + 1006.6) * (1012.1 - 1045.5) + (1006.6 + 1006.6) * (1045.5 - 1088.9) + (1006.6 + 973.6) * (1088.9 - 1121.8) + (973.6 + 973.6) * (1121.8 - 1169.4) + (973.6 + 947.9) * (1169.4 - 1169.4) + (947.9 + 912.9) * (1169.4 - 1204) + (912.9 + 848.1) * (1204 - 1204) + (848.1 + 812.6) * (1204 - 1169.4) + (812.6 + 766.4) * (1169.4 - 1169.4) + (766.4 + 766.4) * (1169.4 - 1103.2) + (766.4 + 407.2) * (1103.2 - 1103.2) + (407.2 + 407.2) * (1103.2 - 1169.4) + (407.2 + 368.8) * (1169.4 - 1169.4) + (368.8 + 343.3) * (1169.4 - 1194.9) + (343.3 + 273.5) * (1194.9 - 1194.9) + (273.5 + 248.1) * (1194.9 - 1169.4) + (248.1 + 199.1) * (1169.4 - 1169.4) + (199.1 + 199.1) * (1169.4 - 1134.4) + (199.1 + 169.5) * (1134.4 - 1104.8) + (169.5 + 169.5) * (1104.8 - 1068.9) + (169.5 + 199.1) * (1068.9 - 1039.3) + (199.1 + 199.1) * (1039.3 - 754.4) + (199.1 + -5) * (754.4 - 754.4) + (-5 + -5) * (754.4 - 436.1) + (-5 + 84.4) * (436.1 - 436.1) + (84.4 + 101.4) * (436.1 - 419.2) + (101.4 + 173.6) * (419.2 - 419.2) * 0.5 * 0.00694$
GARAGE (Non-living area)	595	$-(1275.6 + 1275.6) * (655.4 - 661.4) + (1275.6 + 1281.6) * (661.4 - 661.4) + (1281.6 + 1281.6) * (661.4 - 970.6) + (1281.6 + 1031.9) * (970.6 - 970.6) + (1031.9 + 1031.9) * (970.6 - 916.4) + (1031.9 + 1003.9) * (916.4 - 916.4) + (1003.9 + 1003.9) * (916.4 - 661.4) + (1003.9 + 1038.2) * (661.4 - 661.4) + (1038.2 + 1038.2) * (661.4 - 655.4) + (1038.2 + 1275.6) * (655.4 - 655.4) * 0.5 * 0.00694$
STORAGE (Non-living area)	89	$-(1281.6 + 1281.6) * (557.8 - 661.4) + (1281.6 + 1275.6) * (661.4 - 661.4) + (1275.6 + 1275.6) * (661.4 - 655.4) + (1275.6 + 1151.4) * (655.4 - 655.4) + (1151.4 + 1151.4) * (655.4 - 557.8) + (1151.4 + 1281.6) * (557.8 - 557.8) * 0.5 * 0.00694$
PATIO (Non-living area)	2170	$-(967.6 + 967.6) * (23.2 - 510.2) + (967.6 + 777.3) * (510.2 - 510.2) + (777.3 + 777.3) * (510.2 - 586.6) + (777.3 + 761.9) * (586.6 - 602) + (761.9 + 761.9) * (602 - 634.4) + (761.9 + 776.1) * (634.4 - 648.7) + (776.1 + 403.6) * (648.7 - 648.7) + (403.6 + 425.7) * (648.7 - 626.8) + (425.7 + 425.7) * (626.8 - 556.7) + (425.7 + 402.1) * (556.7 - 533) + (402.1 + 402.1) * (533 - 436.1) + (402.1 + 209.8) * (436.1 - 436.1) + (209.8 + 209.8) * (436.1 - 66.9) + (209.8 + 216.1) * (66.9 - 44.4) + (216.1 + 231.3) * (44.4 - 30.4) + (231.3 + 254.8) * (30.4 - 23.2) + (254.8 + 967.6) * (23.2 - 23.2) * 0.5 * 0.00694 + -(676.8 + 504.1) * (104.5 - 104.5) + (504.1 + 493.6) * (104.5 - 108.4) + (493.6 + 487.1) * (108.4 - 115.4) + (487.1 + 484.8) * (115.4 - 125.4) + (484.8 + 484.8) * (125.4 - 515.7) + (484.8 + 488.3) * (515.7 - 525.1) + (488.3 + 494.9) * (525.1 - 531.6) + (494.9 + 505.5) * (531.6 - 534.2) + (505.5 + 678) * (534.2 - 534.2) + (678 + 687.7) * (534.2 - 531.4) + (687.7 + 695.1) * (531.4 - 522.9) + (695.1 + 697.2) * (522.9 - 513.3) + (697.2 + 697.2) * (513.3 - 123.1) + (697.2 + 692.2) * (123.1 - 111.3) + (692.2 + 685.7) * (111.3 - 107.1) + (685.7 + 676.8) * (107.1 - 104.5) * 0.5 * 0.00694$
PORCH (Non-living area)	260	$-(776.1 + 777.3) * (648.7 - 649.8) + (777.3 + 777.2) * (649.8 - 748.4) + (777.2 + 402.1) * (748.4 - 748.4) + (402.1 + 402.1) * (748.4 - 650.4) + (402.1 + 403.6) * (650.4 - 648.7) + (403.6 + 776.1) * (648.7 - 648.7) * 0.5 * 0.00694$

# 312 Eastleigh Drive, Belleair, Pinellas County, Florida, United States, 33756

Gross Living Area: 5643 sq. ft



Space	Area (sq. ft)	Calculation <small>Coordinate Polygon Area Algorithm using inches</small>
FLOOR 2 (Living area)	2099	$-\left((973.6 + 973.6) * (748.4 - 1169.4) + (973.6 + 766.4) * (1169.4 - 1169.4) + (766.4 + 766.4) * (1169.4 - 1103.2) + (766.4 + 407.2) * (1103.2 - 1103.2) + (407.2 + 407.2) * (1103.2 - 1169.4) + (407.2 + 199.1) * (1169.4 - 1169.4) + (199.1 + 199.1) * (1169.4 - 748.4) + (199.1 + 973.6) * (748.4 - 748.4)\right) * 0.5 * 0.00694$
BALCONY (Non-living area)	155	$-\left((766.4 + 766.4) * (1103.2 - 1165.4) + (766.4 + 407.2) * (1165.4 - 1165.4) + (407.2 + 407.2) * (1165.4 - 1103.2) + (407.2 + 766.4) * (1103.2 - 1103.2)\right) * 0.5 * 0.00694$
BALCONY (Non-living area)	245	$-\left((777.3 + 777.3) * (654.7 - 748.4) + (777.3 + 400.1) * (748.4 - 748.4) + (400.1 + 400.1) * (748.4 - 654.7) + (400.1 + 777.3) * (654.7 - 654.7)\right) * 0.5 * 0.00694$