

Home report

2720 Willowbrook Drive, Roanoke, Roanoke County, Virginia,  
United States, 24012




Total Area: 1591 sq. ft


Floor 1: 0 sq. ft, Floor 2: 1591 sq. ft, Floor 3: 0 sq. ft

Excluded: Garage 1174 sq. ft, Recreation room 440 sq. ft, Fireplace 23 sq. ft, Undefined 38 sq. ft, Screened porch 146 sq. ft, Porch 210 sq. ft, Patio 24 sq. ft, Low ceiling 472 sq. ft, Attic 292 sq. ft, Walls: 284 sq. ft

Property summary

 **3** Floors

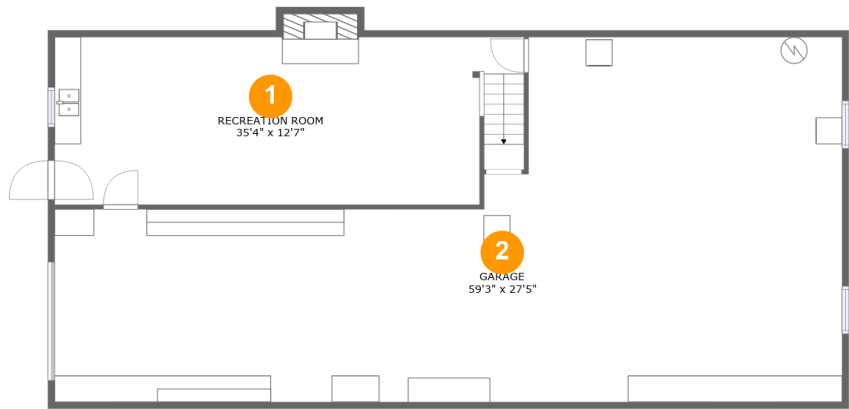
 **3** Bedrooms

 **2** Bathrooms

 **1** Garages

Home report

2720 Willowbrook Drive, Roanoke, Roanoke County, Virginia,  
United States, 24012



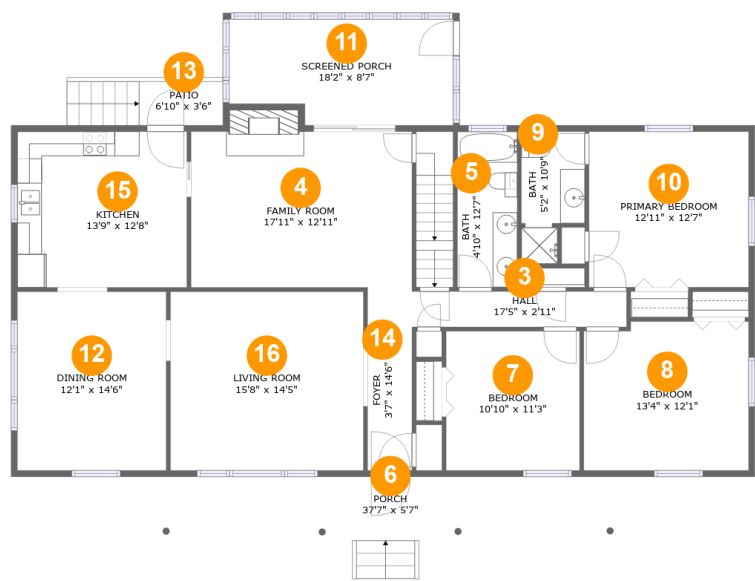
Room dimensions

Floor 1 Total:0sqft   Excluded: 1626sqft

| # |                 | Max Dimensions | sqft        | Included |
|---|-----------------|----------------|-------------|----------|
| 1 | Recreation Room | 35'4" x 12'7"  | 445 sq. ft  | No       |
| 2 | Garage          | 59'3" x 27'5"  | 1174 sq. ft | No       |

Home report

2720 Willowbrook Drive, Roanoke, Roanoke County, Virginia,  
United States, 24012



Room dimensions

Floor 2 Total:1591sqft    Excluded: 429sqft

| #  |                 | Max Dimensions  | sqft       | Included |
|----|-----------------|-----------------|------------|----------|
| 3  | Hall            | 17'5" x 2'11"   | 50 sq. ft  | Yes      |
| 4  | Family Room     | 17'11" x 12'11" | 237 sq. ft | Yes      |
| 5  | Bath            | 4'10" x 12'7"   | 61 sq. ft  | Yes      |
| 6  | Porch           | 37'7" x 5'7"    | 210 sq. ft | No       |
| 7  | Bedroom         | 10'10" x 11'3"  | 122 sq. ft | Yes      |
| 8  | Bedroom         | 13'4" x 12'1"   | 158 sq. ft | Yes      |
| 9  | Bath            | 5'2" x 10'9"    | 48 sq. ft  | Yes      |
| 10 | Primary Bedroom | 12'11" x 12'7"  | 163 sq. ft | Yes      |
| 11 | Screened Porch  | 18'2" x 8'7"    | 146 sq. ft | No       |
| 12 | Dining Room     | 12'1" x 14'6"   | 175 sq. ft | Yes      |
| 13 | Patio           | 6'10" x 3'6"    | 24 sq. ft  | No       |

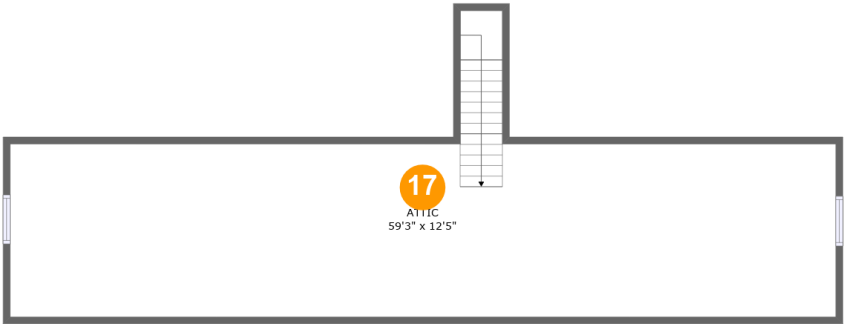
Home report

2720 Willowbrook Drive, Roanoke, Roanoke County, Virginia,  
United States, 24012

| #  |             | Max Dimensions | sqft       | Included |
|----|-------------|----------------|------------|----------|
| 14 | Foyer       | 3'7" x 14'6"   | 52 sq. ft  | Yes      |
| 15 | Kitchen     | 13'9" x 12'8"  | 174 sq. ft | Yes      |
| 16 | Living Room | 15'8" x 14'5"  | 227 sq. ft | Yes      |

Home report

2720 Willowbrook Drive, Roanoke, Roanoke County, Virginia,  
United States, 24012



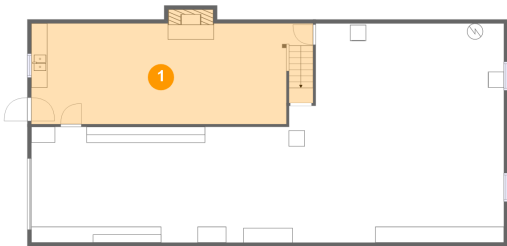
Room dimensions

Floor 3 Total:0sqft   Excluded: 764sqft

| #  |       | Max Dimensions | sqft       | Included |
|----|-------|----------------|------------|----------|
| 17 | Attic | 59'3" x 12'5"  | 292 sq. ft | No       |

2720 Willowbrook Drive, Roanoke, Roanoke County, Virginia,  
United States, 24012

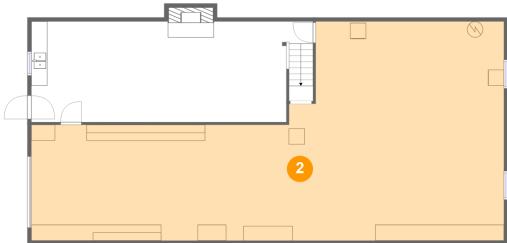
1 Floor 1 - Recreation Room



Max Dimensions: 35'4" x 12'7"  
Calculated Area: 445 sq. ft  
Included: No

Heated: Yes  
Finished: No  
Enclosed: Yes  
Contiguous: Yes  
Permitted: Yes  
Wet space: No  
Addition: No  
Conversion: No

2 Floor 1 - Garage



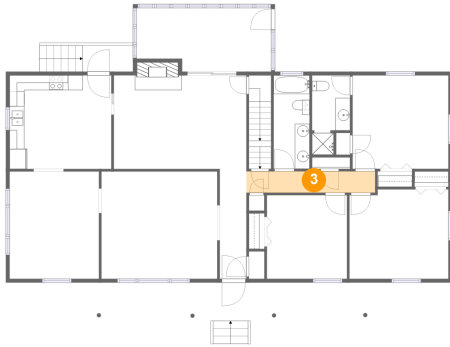
Max Dimensions: 59'3" x 27'5"  
Calculated Area: 1174 sq. ft  
Included: No

Heated: No  
Finished: No  
Enclosed: Yes  
Contiguous: Yes  
Permitted: Yes  
Wet space: No  
Addition: No  
Conversion: No

## Home report

2720 Willowbrook Drive, Roanoke, Roanoke County, Virginia,  
United States, 24012

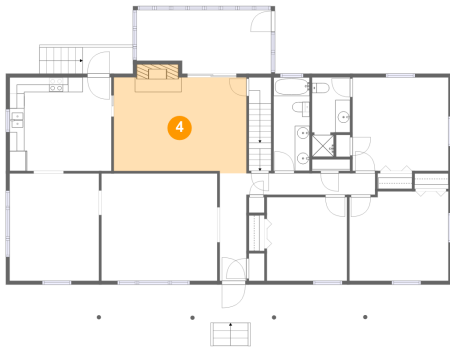
### 3 Floor 2 - Hall



Max Dimensions: 17'5" x 2'11"  
Calculated Area: 50 sq. ft  
Included: Yes

Heated: Yes  
Finished: Yes  
Enclosed: Yes  
Contiguous: Yes  
Permitted: Yes  
Wet space: No  
Addition: No  
Conversion: No

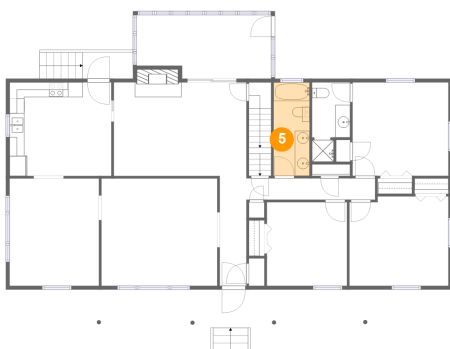
### 4 Floor 2 - Family Room



Max Dimensions: 17'11" x 12'11"  
Calculated Area: 237 sq. ft  
Included: Yes

Heated: Yes  
Finished: Yes  
Enclosed: Yes  
Contiguous: Yes  
Permitted: Yes  
Wet space: No  
Addition: No  
Conversion: No

### 5 Floor 2 - Bath

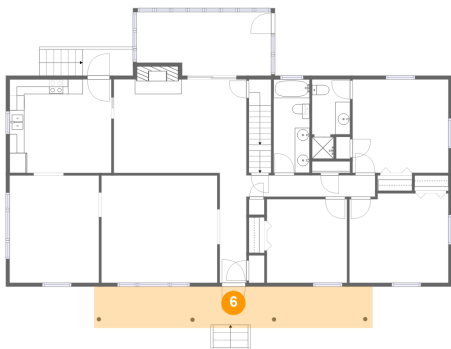


Max Dimensions: 4'10" x 12'7"  
Calculated Area: 61 sq. ft  
Included: Yes

Heated: Yes  
Finished: Yes  
Enclosed: Yes  
Contiguous: Yes  
Permitted: Yes  
Wet space: Yes  
Addition: No  
Conversion: No

2720 Willowbrook Drive, Roanoke, Roanoke County, Virginia,  
United States, 24012

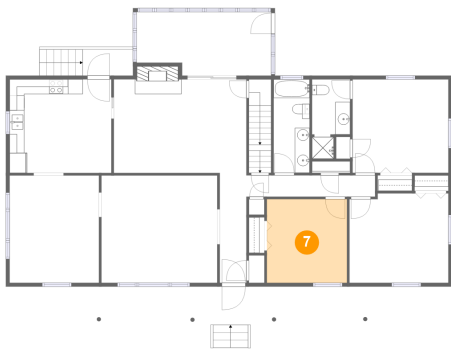
6 Floor 2 - Porch



Max Dimensions: 37'7" x 5'7"  
Calculated Area: 210 sq. ft  
Included: No

Heated: No  
Finished: Yes  
Enclosed: No  
Contiguous: Yes  
Permitted: Yes  
Wet space: No  
Addition: No  
Conversion: No

7 Floor 2 - Bedroom



Max Dimensions: 10'10" x 11'3"  
Calculated Area: 122 sq. ft  
Included: Yes

Heated: Yes  
Finished: Yes  
Enclosed: Yes  
Contiguous: Yes  
Permitted: Yes  
Wet space: No  
Addition: No  
Conversion: No

8 Floor 2 - Bedroom



Max Dimensions: 13'4" x 12'1"  
Calculated Area: 158 sq. ft  
Included: Yes

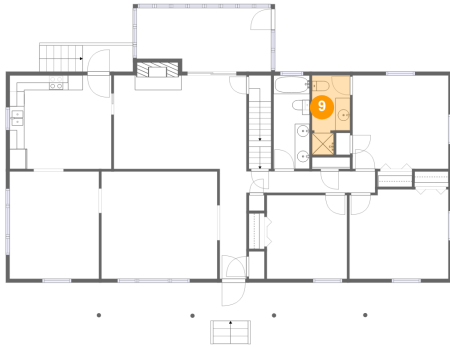
Heated: Yes  
Finished: Yes  
Enclosed: Yes  
Contiguous: Yes  
Permitted: Yes  
Wet space: No  
Addition: No  
Conversion: No



## Home report

2720 Willowbrook Drive, Roanoke, Roanoke County, Virginia,  
United States, 24012

### 9 Floor 2 - Bath



Max Dimensions: 5'2" x 10'9"  
Calculated Area: 48 sq. ft  
Included: Yes

Heated: Yes  
Finished: Yes  
Enclosed: Yes  
Contiguous: Yes  
Permitted: Yes  
Wet space: Yes  
Addition: No  
Conversion: No

### 10 Floor 2 - Primary Bedroom



Max Dimensions: 12'11" x 12'7"  
Calculated Area: 163 sq. ft  
Included: Yes

Heated: Yes  
Finished: Yes  
Enclosed: Yes  
Contiguous: Yes  
Permitted: Yes  
Wet space: No  
Addition: No  
Conversion: No

### 11 Floor 2 - Screened Porch

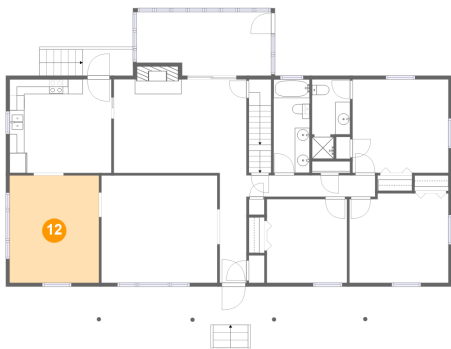


Max Dimensions: 18'2" x 8'7"  
Calculated Area: 146 sq. ft  
Included: No

Heated: No  
Finished: Yes  
Enclosed: No  
Contiguous: Yes  
Permitted: Yes  
Wet space: No  
Addition: No  
Conversion: No

2720 Willowbrook Drive, Roanoke, Roanoke County, Virginia,  
United States, 24012

12 Floor 2 - Dining Room



Max Dimensions: 12'1" x 14'6"  
Calculated Area: 175 sq. ft  
Included: Yes

Heated: Yes  
Finished: Yes  
Enclosed: Yes  
Contiguous: Yes  
Permitted: Yes  
Wet space: No  
Addition: No  
Conversion: No

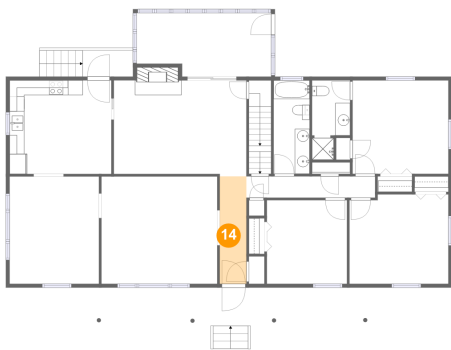
13 Floor 2 - Patio



Max Dimensions: 6'10" x 3'6"  
Calculated Area: 24 sq. ft  
Included: No

Heated: No  
Finished: Yes  
Enclosed: No  
Contiguous: Yes  
Permitted: Yes  
Wet space: No  
Addition: No  
Conversion: No

14 Floor 2 - Foyer

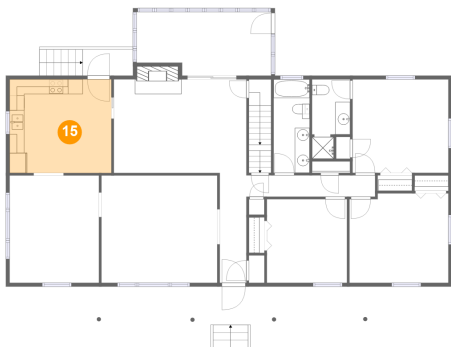


Max Dimensions: 3'7" x 14'6"  
Calculated Area: 52 sq. ft  
Included: Yes

Heated: Yes  
Finished: Yes  
Enclosed: Yes  
Contiguous: Yes  
Permitted: Yes  
Wet space: No  
Addition: No  
Conversion: No

2720 Willowbrook Drive, Roanoke, Roanoke County, Virginia,  
United States, 24012

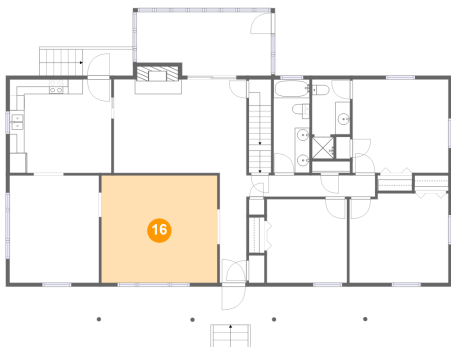
15 Floor 2 - Kitchen



Max Dimensions: 13'9" x 12'8"  
Calculated Area: 174 sq. ft  
Included: Yes

Heated: Yes  
Finished: Yes  
Enclosed: Yes  
Contiguous: Yes  
Permitted: Yes  
Wet space: No  
Addition: No  
Conversion: No

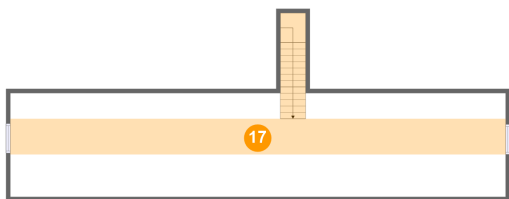
16 Floor 2 - Living Room



Max Dimensions: 15'8" x 14'5"  
Calculated Area: 227 sq. ft  
Included: Yes

Heated: Yes  
Finished: Yes  
Enclosed: Yes  
Contiguous: Yes  
Permitted: Yes  
Wet space: No  
Addition: No  
Conversion: No

17 Floor 3 - Attic



Max Dimensions: 59'3" x 12'5"  
Calculated Area: 292 sq. ft  
Included: No

Heated: No  
Finished: No  
Enclosed: Yes  
Contiguous: Yes  
Permitted: Yes  
Wet space: No  
Addition: No  
Conversion: No