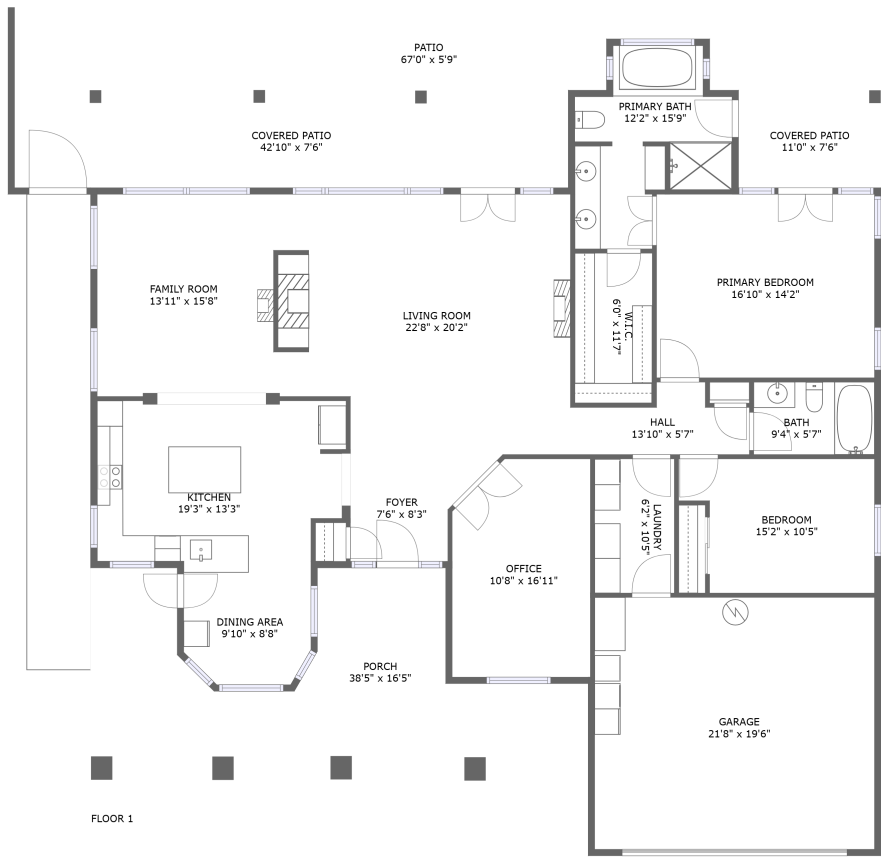


Home report

4851 Marywood Court, Pahrump, Nye County, Nevada, United States, 89061




Total Area: 2066 sq. ft

Floor 1: 2066 sq. ft

Excluded: Patio 356 sq. ft, Covered patio 406 sq. ft, Porch 435 sq. ft, Garage 422 sq. ft, Walls: 150 sq. ft

Property summary

 1 Floors

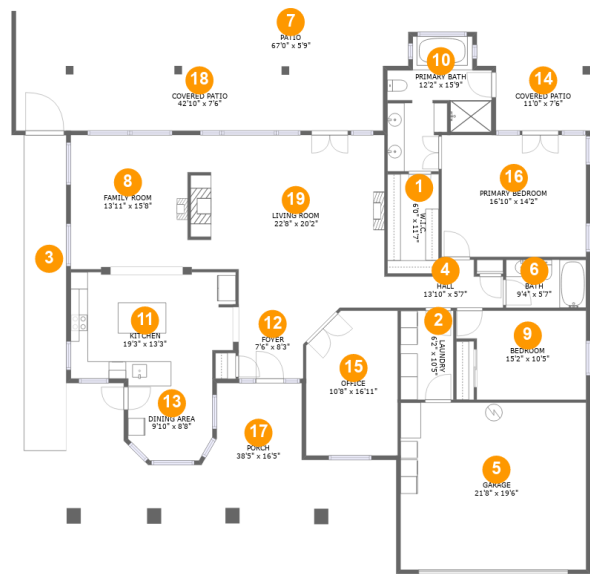
 2 Bedrooms

 2 Bathrooms

 1 Garages

Home report

4851 Marywood Court, Pahrump, Nye County, Nevada, United States, 89061



Room dimensions

Floor 1 Total:2066sqft Excluded: 1619sqft

#		Max Dimensions	sqft	Included
1	W.I.C.	6'0" x 11'7"	70 sq. ft	Yes
2	Laundry	6'2" x 10'5"	64 sq. ft	Yes
3	Walking Path	4'11" x 36'10"	182 sq. ft	No
4	Hall	13'10" x 5'7"	58 sq. ft	Yes
5	Garage	21'8" x 19'6"	422 sq. ft	No
6	Bath	9'4" x 5'7"	52 sq. ft	Yes
7	Patio	67'0" x 5'9"	356 sq. ft	No
8	Family Room	13'11" x 15'8"	216 sq. ft	Yes
9	Bedroom	15'2" x 10'5"	140 sq. ft	Yes
10	Primary Bath	12'2" x 15'9"	140 sq. ft	Yes
11	Kitchen	19'3" x 13'3"	233 sq. ft	Yes

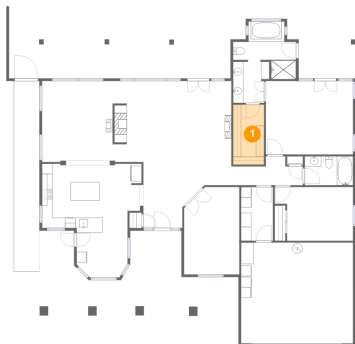
Home report

4851 Marywood Court, Pahrump, Nye County, Nevada, United States, 89061

#		Max Dimensions	sqft	Included
12	Foyer	7'6" x 8'3"	71 sq. ft	Yes
13	Dining Area	9'10" x 8'8"	80 sq. ft	Yes
14	Covered Patio	11'0" x 7'6"	83 sq. ft	No
15	Office	10'8" x 16'11"	172 sq. ft	Yes
16	Primary Bedroom	16'10" x 14'2"	239 sq. ft	Yes
17	Porch	38'5" x 16'5"	435 sq. ft	No
18	Covered Patio	42'10" x 7'6"	323 sq. ft	No
19	Living Room	22'8" x 20'2"	430 sq. ft	Yes

4851 Marywood Court, Pahrump, Nye County, Nevada, United States, 89061

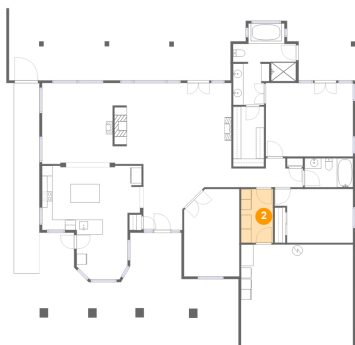
1 Floor 1 - W.I.C.



Max Dimensions: 6'0" x 11'7"
Calculated Area: 70 sq. ft
Included: Yes

Heated: Yes
Finished: Yes
Enclosed: Yes
Contiguous: Yes
Permitted: Yes
Wet space: No
Addition: No
Conversion: No

2 Floor 1 - Laundry

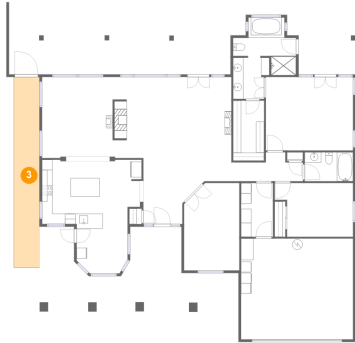


Max Dimensions: 6'2" x 10'5"
Calculated Area: 64 sq. ft
Included: Yes

Heated: Yes
Finished: Yes
Enclosed: Yes
Contiguous: Yes
Permitted: Yes
Wet space: No
Addition: No
Conversion: No

4851 Marywood Court, Pahrump, Nye County, Nevada, United States, 89061

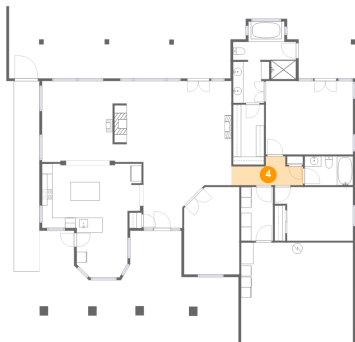
3 Floor 1 - Walking Path



Max Dimensions: 4'11" x 36'10"
Calculated Area: 182 sq. ft
Included: No

Heated: No
Finished: No
Enclosed: No
Contiguous: Yes
Permitted: No
Wet space: No
Addition: No
Conversion: No

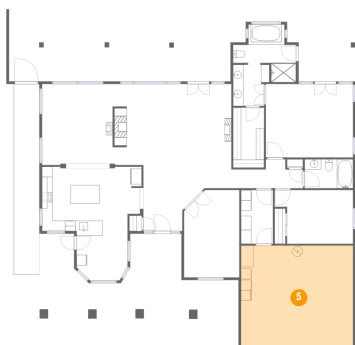
4 Floor 1 - Hall



Max Dimensions: 13'10" x 5'7"
Calculated Area: 58 sq. ft
Included: Yes

Heated: Yes
Finished: Yes
Enclosed: Yes
Contiguous: Yes
Permitted: Yes
Wet space: No
Addition: No
Conversion: No

5 Floor 1 - Garage

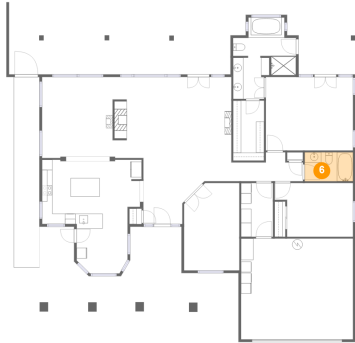


Max Dimensions: 21'8" x 19'6"
Calculated Area: 422 sq. ft
Included: No

Heated: No
Finished: No
Enclosed: Yes
Contiguous: Yes
Permitted: Yes
Wet space: No
Addition: No
Conversion: No

4851 Marywood Court, Pahrump, Nye County, Nevada, United States, 89061

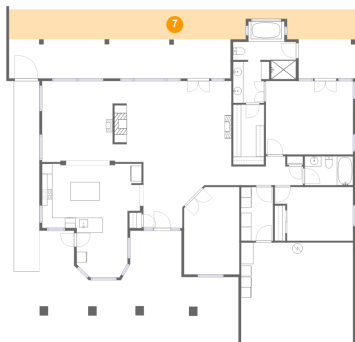
6 Floor 1 - Bath



Max Dimensions: 9'4" x 5'7"
Calculated Area: 52 sq. ft
Included: Yes

Heated: Yes
Finished: Yes
Enclosed: Yes
Contiguous: Yes
Permitted: Yes
Wet space: Yes
Addition: No
Conversion: No

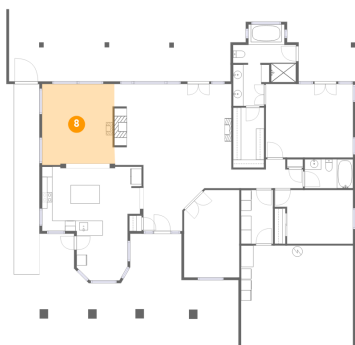
7 Floor 1 - Patio



Max Dimensions: 67'0" x 5'9"
Calculated Area: 356 sq. ft
Included: No

Heated: No
Finished: Yes
Enclosed: No
Contiguous: Yes
Permitted: Yes
Wet space: No
Addition: No
Conversion: No

8 Floor 1 - Family Room

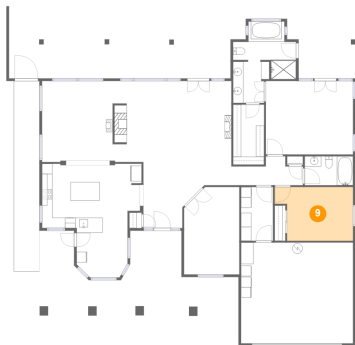


Max Dimensions: 13'11" x 15'8"
Calculated Area: 216 sq. ft
Included: Yes

Heated: Yes
Finished: Yes
Enclosed: Yes
Contiguous: Yes
Permitted: Yes
Wet space: No
Addition: No
Conversion: No

4851 Marywood Court, Pahrump, Nye County, Nevada, United States, 89061

9 Floor 1 - Bedroom



Max Dimensions: 15'2" x 10'5"
Calculated Area: 140 sq. ft
Included: Yes

Heated: Yes
Finished: Yes
Enclosed: Yes
Contiguous: Yes
Permitted: Yes
Wet space: No
Addition: No
Conversion: No

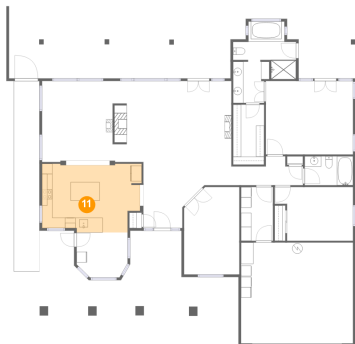
10 Floor 1 - Primary Bath



Max Dimensions: 12'2" x 15'9"
Calculated Area: 140 sq. ft
Included: Yes

Heated: Yes
Finished: Yes
Enclosed: Yes
Contiguous: Yes
Permitted: Yes
Wet space: Yes
Addition: No
Conversion: No

11 Floor 1 - Kitchen



Max Dimensions: 19'3" x 13'3"
Calculated Area: 233 sq. ft
Included: Yes

Heated: Yes
Finished: Yes
Enclosed: Yes
Contiguous: Yes
Permitted: Yes
Wet space: No
Addition: No
Conversion: No

4851 Marywood Court, Pahrump, Nye County, Nevada, United States, 89061

12 Floor 1 - Foyer



Max Dimensions: 7'6" x 8'3"
Calculated Area: 71 sq. ft
Included: Yes

Heated: Yes
Finished: Yes
Enclosed: Yes
Contiguous: Yes
Permitted: Yes
Wet space: No
Addition: No
Conversion: No

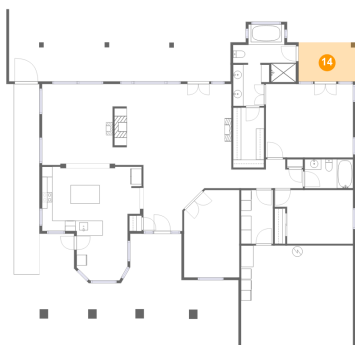
13 Floor 1 - Dining Area



Max Dimensions: 9'10" x 8'8"
Calculated Area: 80 sq. ft
Included: Yes

Heated: Yes
Finished: Yes
Enclosed: Yes
Contiguous: Yes
Permitted: Yes
Wet space: No
Addition: No
Conversion: No

14 Floor 1 - Covered Patio

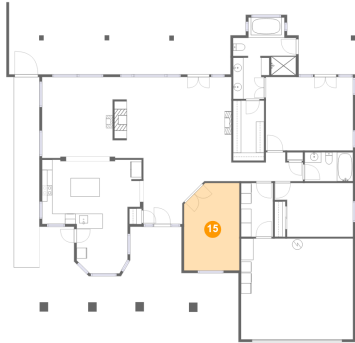


Max Dimensions: 11'0" x 7'6"
Calculated Area: 83 sq. ft
Included: No

Heated: No
Finished: Yes
Enclosed: No
Contiguous: Yes
Permitted: Yes
Wet space: No
Addition: No
Conversion: No

4851 Marywood Court, Pahrump, Nye County, Nevada, United States, 89061

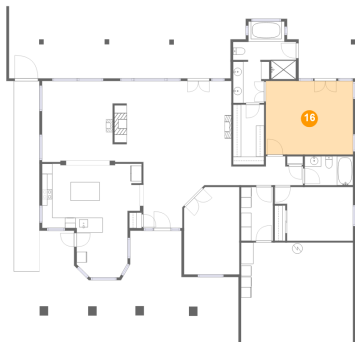
15 Floor 1 - Office



Max Dimensions: 10'8" x 16'11"
Calculated Area: 172 sq. ft
Included: Yes

Heated: Yes
Finished: Yes
Enclosed: Yes
Contiguous: Yes
Permitted: Yes
Wet space: No
Addition: No
Conversion: No

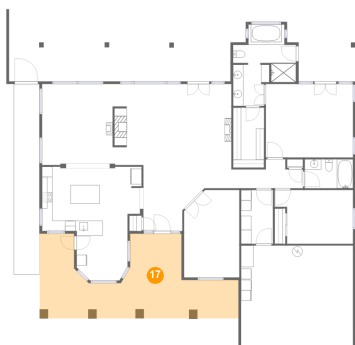
16 Floor 1 - Primary Bedroom



Max Dimensions: 16'10" x 14'2"
Calculated Area: 239 sq. ft
Included: Yes

Heated: Yes
Finished: Yes
Enclosed: Yes
Contiguous: Yes
Permitted: Yes
Wet space: No
Addition: No
Conversion: No

17 Floor 1 - Porch



Max Dimensions: 38'5" x 16'5"
Calculated Area: 435 sq. ft
Included: No

Heated: No
Finished: Yes
Enclosed: No
Contiguous: Yes
Permitted: Yes
Wet space: No
Addition: No
Conversion: No

4851 Marywood Court, Pahrump, Nye County, Nevada, United States, 89061

18 Floor 1 - Covered Patio



Max Dimensions: 42'10" x 7'6"
Calculated Area: 323 sq. ft
Included: No

Heated: No
Finished: Yes
Enclosed: No
Contiguous: Yes
Permitted: Yes
Wet space: No
Addition: No
Conversion: No

19 Floor 1 - Living Room



Max Dimensions: 22'8" x 20'2"
Calculated Area: 430 sq. ft
Included: Yes

Heated: Yes
Finished: Yes
Enclosed: Yes
Contiguous: Yes
Permitted: Yes
Wet space: No
Addition: No
Conversion: No