


123 Central Avenue, Glen Rock, Bergen County, New Jersey, United States, 07452



Property summary


 **1** Garages

 **3** Bedrooms

 **2** Bathrooms

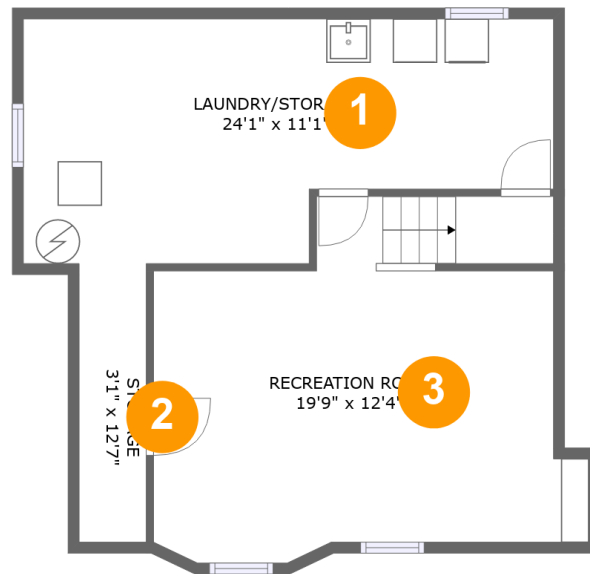
 **1** Half baths

 **4** Floors

 **2,264** Gross living area sqft

 **3,916** Total sqft

123 Central Avenue, Glen Rock, Bergen County, New Jersey, United States, 07452



Room dimensions

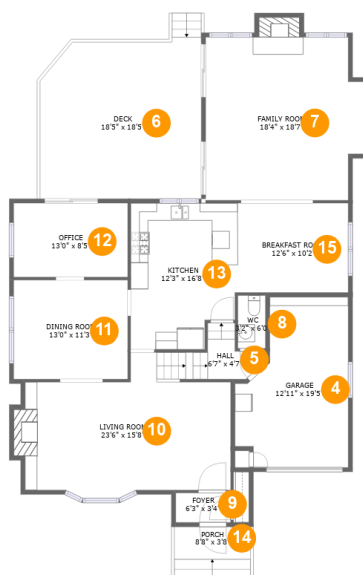
Floor 1

Total sqft: 602

Living area: 0

#		Dimensions	sqft	Counted as living area
1	LAUNDRY/STORAGE	24'1" x 11'1"	230 sq. ft	No
2	Storage	3'1" x 12'7"	39 sq. ft	No
3	Recreation Room	19'9" x 12'4"	270 sq. ft	No

123 Central Avenue, Glen Rock, Bergen County, New Jersey, United States, 07452



Room dimensions

Floor 2

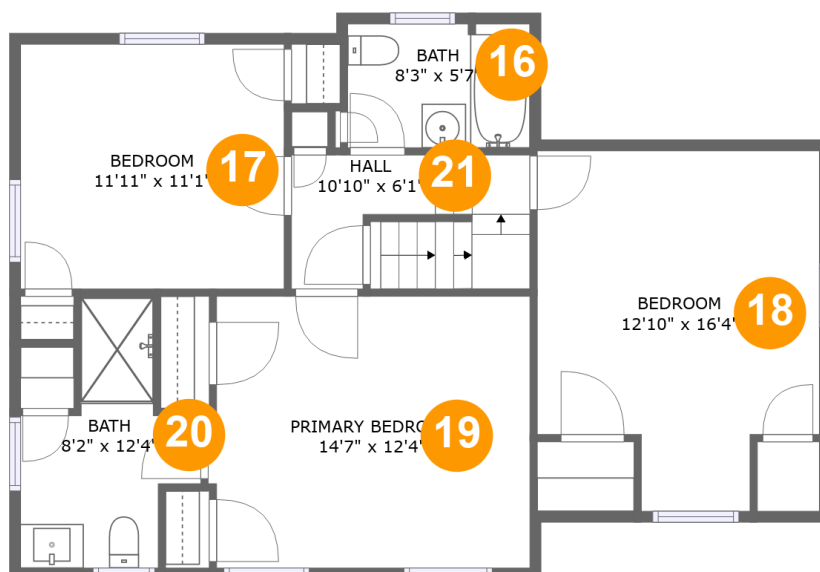
Total sqft: 2067 Living area: 1432

#		Dimensions	sqft	Counted as living area
4	Garage	12'11" x 19'5"	210 sq. ft	No
5	Hall	6'7" x 4'7"	38 sq. ft	Yes
6	Deck	18'5" x 18'5"	332 sq. ft	No
7	Family Room	18'4" x 18'7"	330 sq. ft	Yes
8	WC	3'2" x 6'0"	19 sq. ft	Yes
9	Foyer	6'3" x 3'4"	21 sq. ft	Yes
10	Living Room	23'6" x 15'8"	321 sq. ft	Yes
11	Dining Room	13'0" x 11'3"	147 sq. ft	Yes
12	Office	13'0" x 8'5"	110 sq. ft	Yes
13	Kitchen	12'3" x 16'8"	191 sq. ft	Yes
14	Porch	8'8" x 3'8"	52 sq. ft	No

123 Central Avenue, Glen Rock, Bergen County, New Jersey, United States, 07452

#		Dimensions	sqft	Counted as living area
15	Breakfast Room	12'6" x 10'2"	128 sq. ft	Yes

123 Central Avenue, Glen Rock, Bergen County, New Jersey, United States, 07452



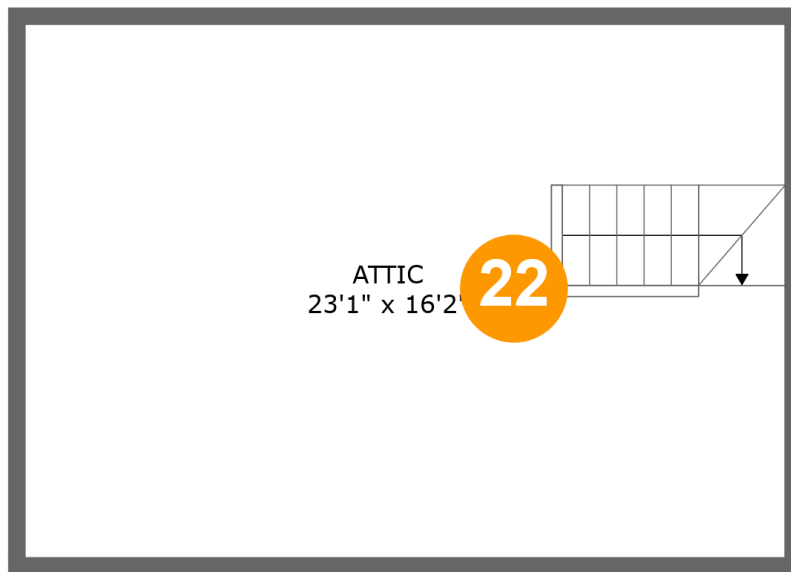
Room dimensions

Floor 3

Total sqft: 832 Living area: 832

#		Dimensions	sqft	Counted as living area
16	Bath	8'3" x 5'7"	46 sq. ft	Yes
17	Bedroom	11'11" x 11'1"	133 sq. ft	Yes
18	Bedroom	12'10" x 16'4"	182 sq. ft	Yes
19	Primary Bedroom	14'7" x 12'4"	176 sq. ft	Yes
20	Bath	8'2" x 12'4"	67 sq. ft	Yes
21	Hall	10'10" x 6'1"	63 sq. ft	Yes

123 Central Avenue, Glen Rock, Bergen County, New Jersey, United States, 07452



Room dimensions

Floor 4

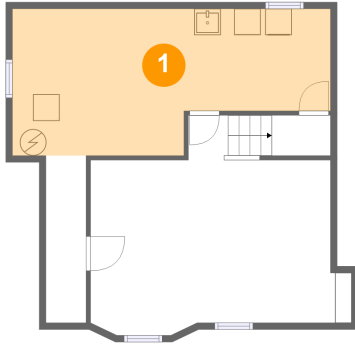
Total sqft: 415

Living area: 0

#		Dimensions	sqft	Counted as living area
22	Attic	23'1" x 16'2"	102 sq. ft	No

123 Central Avenue, Glen Rock, Bergen County, New Jersey, United States, 07452

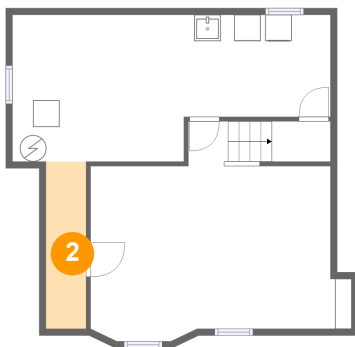
1 Floor 1 - LAUNDRY/STORAGE



Dimensions: 24'1" x 11'1"
Area: 230 sq. ft
Counted as living area: No

Heated: Yes
Finished: No
Enclosed: Yes
Contiguous: Yes
Permitted: Yes
Wet space: No
Addition: No
Conversion: No

2 Floor 1 - Storage



Dimensions: 3'1" x 12'7"
Area: 39 sq. ft
Counted as living area: No

Heated: No
Finished: No
Enclosed: No
Contiguous: Yes
Permitted: Yes
Wet space: No
Addition: No
Conversion: No

123 Central Avenue, Glen Rock, Bergen County, New Jersey, United States, 07452

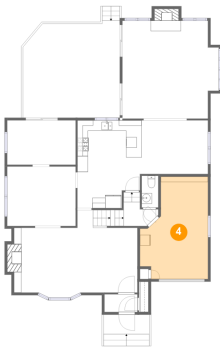
3 Floor 1 - Recreation Room



Dimensions: 19'9" x 12'4"
Area: 270 sq. ft
Counted as living area: No

Heated: Yes
Finished: Yes
Enclosed: Yes
Contiguous: No
Permitted: Yes
Wet space: No
Addition: No
Conversion: No

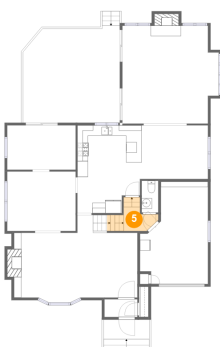
4 Floor 2 - Garage



Dimensions: 12'11" x 19'5"
Area: 210 sq. ft
Counted as living area: No

Heated: No
Finished: No
Enclosed: Yes
Contiguous: Yes
Permitted: Yes
Wet space: No
Addition: No
Conversion: No

5 Floor 2 - Hall

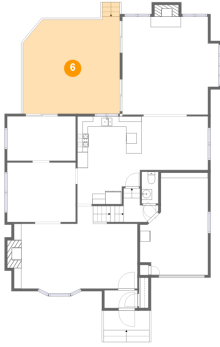


Dimensions: 6'7" x 4'7"
Area: 38 sq. ft
Counted as living area: Yes

Heated: Yes
Finished: Yes
Enclosed: Yes
Contiguous: Yes
Permitted: Yes
Wet space: No
Addition: No
Conversion: No

123 Central Avenue, Glen Rock, Bergen County, New Jersey, United States, 07452

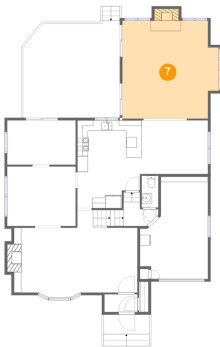
6 Floor 2 - Deck



Dimensions: 18'5" x 18'5"
Area: 332 sq. ft
Counted as living area: No

Heated: No
Finished: Yes
Enclosed: No
Contiguous: Yes
Permitted: Yes
Wet space: No
Addition: No
Conversion: No

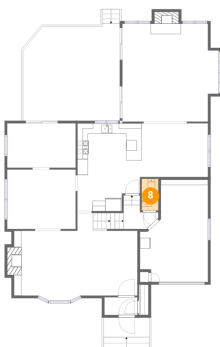
7 Floor 2 - Family Room



Dimensions: 18'4" x 18'7"
Area: 330 sq. ft
Counted as living area: Yes

Heated: Yes
Finished: Yes
Enclosed: Yes
Contiguous: Yes
Permitted: Yes
Wet space: No
Addition: No
Conversion: No

8 Floor 2 - WC

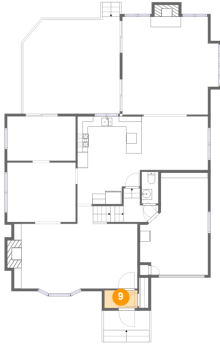


Dimensions: 3'2" x 6'0"
Area: 19 sq. ft
Counted as living area: Yes

Heated: Yes
Finished: Yes
Enclosed: Yes
Contiguous: Yes
Permitted: Yes
Wet space: Yes
Addition: No
Conversion: No

123 Central Avenue, Glen Rock, Bergen County, New Jersey, United States, 07452

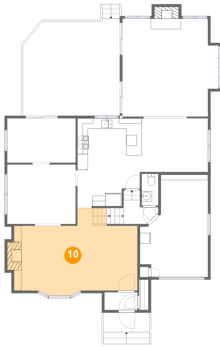
9 Floor 2 - Foyer



Dimensions: 6'3" x 3'4"
Area: 21 sq. ft
Counted as living area: Yes

Heated: Yes
Finished: Yes
Enclosed: Yes
Contiguous: Yes
Permitted: Yes
Wet space: No
Addition: No
Conversion: No

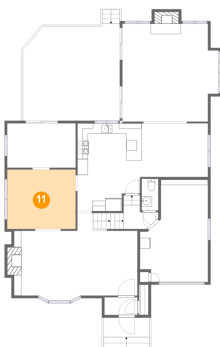
10 Floor 2 - Living Room



Dimensions: 23'6" x 15'8"
Area: 321 sq. ft
Counted as living area: Yes

Heated: Yes
Finished: Yes
Enclosed: Yes
Contiguous: Yes
Permitted: Yes
Wet space: No
Addition: No
Conversion: No

11 Floor 2 - Dining Room

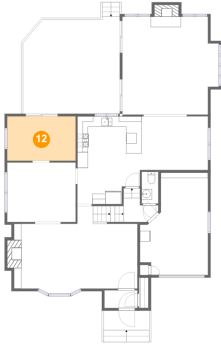


Dimensions: 13'0" x 11'3"
Area: 147 sq. ft
Counted as living area: Yes

Heated: Yes
Finished: Yes
Enclosed: Yes
Contiguous: Yes
Permitted: Yes
Wet space: No
Addition: No
Conversion: No

123 Central Avenue, Glen Rock, Bergen County, New Jersey, United States, 07452

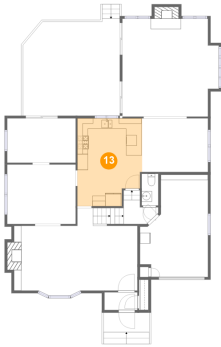
12 Floor 2 - Office



Dimensions: 13'0" x 8'5"
Area: 110 sq. ft
Counted as living area: Yes

Heated: Yes
Finished: Yes
Enclosed: Yes
Contiguous: Yes
Permitted: Yes
Wet space: No
Addition: No
Conversion: No

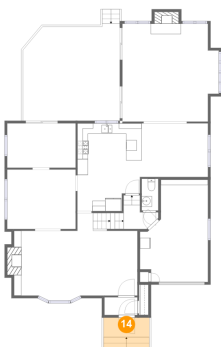
13 Floor 2 - Kitchen



Dimensions: 12'3" x 16'8"
Area: 191 sq. ft
Counted as living area: Yes

Heated: Yes
Finished: Yes
Enclosed: Yes
Contiguous: Yes
Permitted: Yes
Wet space: No
Addition: No
Conversion: No

14 Floor 2 - Porch

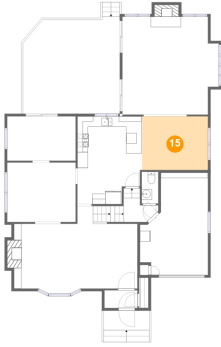


Dimensions: 8'8" x 3'8"
Area: 52 sq. ft
Counted as living area: No

Heated: No
Finished: Yes
Enclosed: No
Contiguous: Yes
Permitted: Yes
Wet space: No
Addition: No
Conversion: No

123 Central Avenue, Glen Rock, Bergen County, New Jersey, United States, 07452

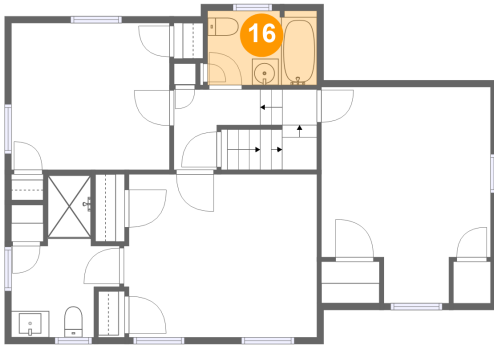
15 Floor 2 - Breakfast Room



Dimensions: 12'6" x 10'2"
Area: 128 sq. ft
Counted as living area: Yes

Heated: Yes
Finished: Yes
Enclosed: Yes
Contiguous: Yes
Permitted: Yes
Wet space: No
Addition: No
Conversion: No

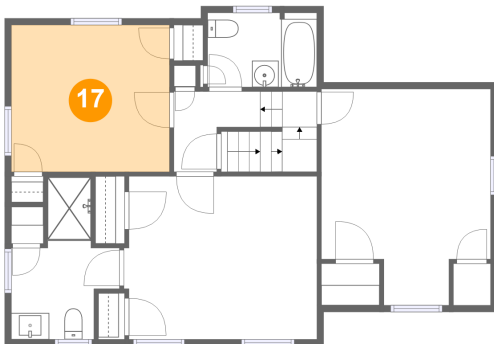
16 Floor 3 - Bath



Dimensions: 8'3" x 5'7"
Area: 46 sq. ft
Counted as living area: Yes

Heated: Yes
Finished: Yes
Enclosed: Yes
Contiguous: Yes
Permitted: Yes
Wet space: Yes
Addition: No
Conversion: No

17 Floor 3 - Bedroom

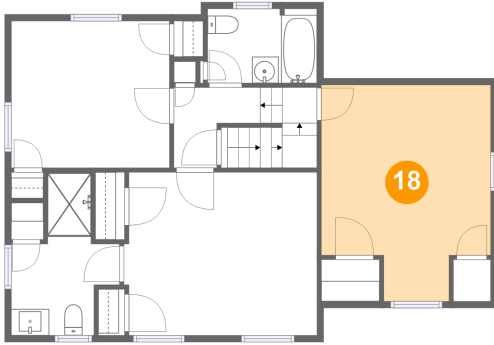


Dimensions: 11'11" x 11'1"
Area: 133 sq. ft
Counted as living area: Yes

Heated: Yes
Finished: Yes
Enclosed: Yes
Contiguous: Yes
Permitted: Yes
Wet space: No
Addition: No
Conversion: No

123 Central Avenue, Glen Rock, Bergen County, New Jersey, United States, 07452

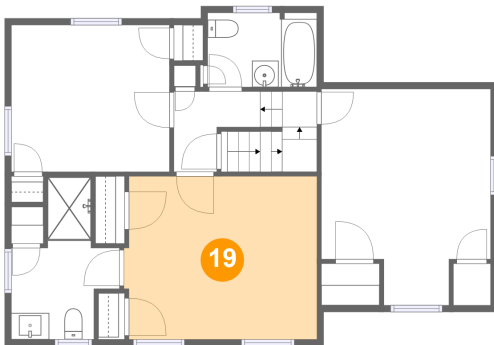
18 Floor 3 - Bedroom



Dimensions: 12'10" x 16'4"
Area: 182 sq. ft
Counted as living area: Yes

Heated: Yes
Finished: Yes
Enclosed: Yes
Contiguous: Yes
Permitted: Yes
Wet space: No
Addition: No
Conversion: No

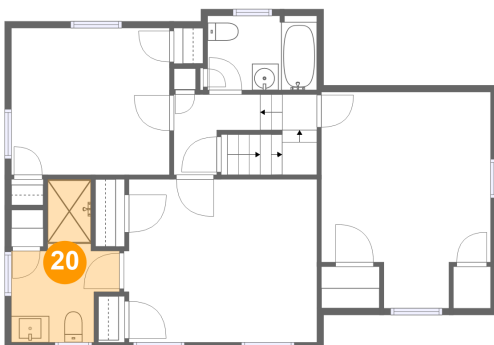
19 Floor 3 - Primary Bedroom



Dimensions: 14'7" x 12'4"
Area: 176 sq. ft
Counted as living area: Yes

Heated: Yes
Finished: Yes
Enclosed: Yes
Contiguous: Yes
Permitted: Yes
Wet space: No
Addition: No
Conversion: No

20 Floor 3 - Bath

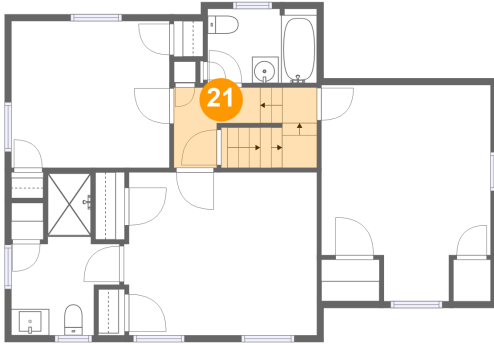


Dimensions: 8'2" x 12'4"
Area: 67 sq. ft
Counted as living area: Yes

Heated: Yes
Finished: Yes
Enclosed: Yes
Contiguous: Yes
Permitted: Yes
Wet space: Yes
Addition: No
Conversion: No

123 Central Avenue, Glen Rock, Bergen County, New Jersey, United States, 07452

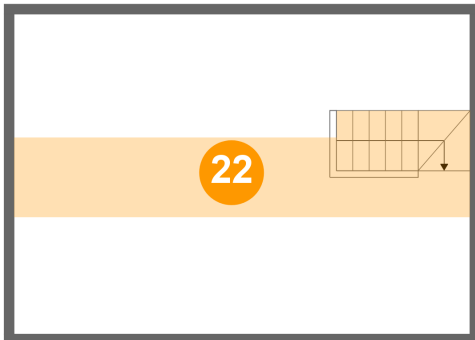
21 Floor 3 - Hall



Dimensions: 10'10" x 6'1"
Area: 63 sq. ft
Counted as living area: Yes

Heated: Yes
Finished: Yes
Enclosed: Yes
Contiguous: Yes
Permitted: Yes
Wet space: No
Addition: No
Conversion: No

22 Floor 4 - Attic



Dimensions: 23'1" x 16'2"
Area: 102 sq. ft
Counted as living area: No

Heated: No
Finished: No
Enclosed: Yes
Contiguous: Yes
Permitted: Yes
Wet space: No
Addition: No
Conversion: No