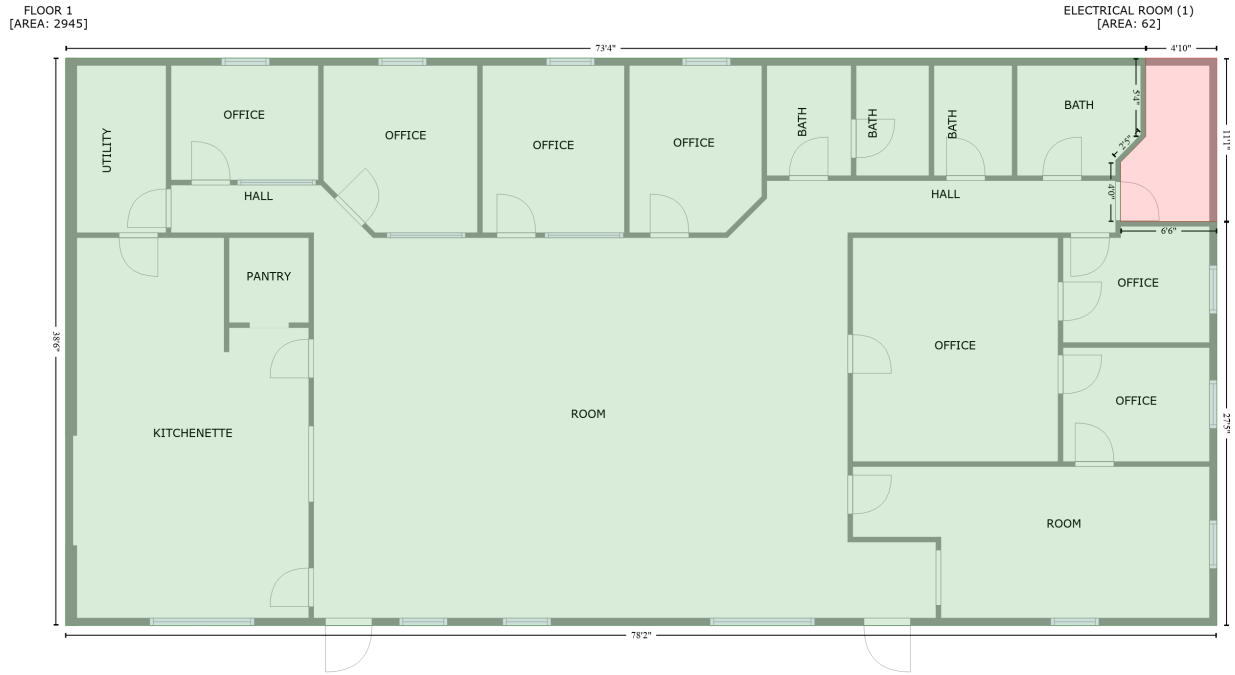


130 Louisa Avenue, Mineral, Louisa County, Virginia, United States, 23117

Gross Living Area: 2945 sq. ft



Space	Area (sq. ft)	Calculation <small>Coordinate Polygon Area Algorithm using inches</small>
FLOOR 1 (Living area)	2945	$-\left((874 + 874) * (7.8 - 71.7) + (874 + 853.5) * (71.7 - 92.5) + (853.5 + 853.5) * (92.5 - 140.7) + (853.5 + 932) * (140.7 - 140.7) + (932 + 932) * (140.7 - 469.6) + (932 + -5.6) * (469.6 - 469.6) + (-5.6 + -5.6) * (469.6 - 7.8) + (-5.6 + 874) * (7.8 - 7.8)\right) * 0.5 * 0.00694$
ELECTRICAL ROOM (Non-living area)	62	$-\left((932 + 932) * (7.8 - 140.7) + (932 + 853.5) * (140.7 - 140.7) + (853.5 + 853.5) * (140.7 - 92.5) + (853.5 + 874) * (92.5 - 71.7) + (874 + 874) * (71.7 - 7.8) + (874 + 932) * (7.8 - 7.8)\right) * 0.5 * 0.00694$