

Home report

8735 Terracina Lake Drive, Citrus Park, Tampa, Hillsborough County, Florida, United States, 33625



Total Area: 2112 sq. ft

Floor 1: 1198 sq. ft, Floor 2: 914 sq. ft

Excluded: Garage 314 sq. ft, Low ceiling 32 sq. ft, Porch 87 sq. ft, Open to below 217 sq. ft, Walls: 160 sq. ft

Property summary

 **2** Floors

 **3** Bedrooms

 **2** Bathrooms

Home report

**8735 Terracina Lake Drive, Citrus Park, Tampa, Hillsborough  
County, Florida, United States, 33625**



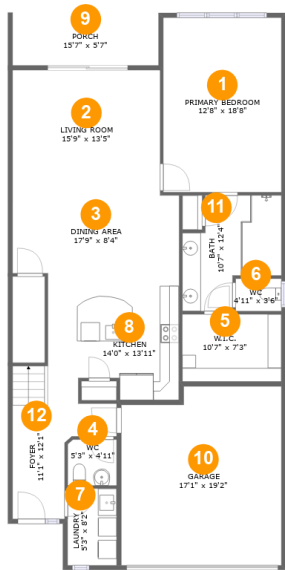
**1**  
Half baths



**1**  
Garages

Home report

8735 Terracina Lake Drive, Citrus Park, Tampa, Hillsborough County, Florida, United States, 33625



Room dimensions

Floor 1 Total:1198sqft Excluded: 433sqft

#		Max Dimensions	sqft	Included
1	Primary Bedroom	12'8" x 18'8"	236 sq. ft	Yes
2	Living Room	15'9" x 13'5"	211 sq. ft	Yes
3	Dining Area	17'9" x 8'4"	148 sq. ft	Yes
4	WC	5'3" x 4'11"	26 sq. ft	Yes
5	W.I.C.	10'7" x 7'3"	76 sq. ft	Yes
6	WC	4'11" x 3'6"	17 sq. ft	Yes
7	Laundry	5'3" x 8'2"	43 sq. ft	Yes
8	Kitchen	14'0" x 13'11"	181 sq. ft	Yes
9	Porch	15'7" x 5'7"	87 sq. ft	No
10	Garage	17'1" x 19'2"	314 sq. ft	No
11	Bath	10'7" x 12'4"	101 sq. ft	Yes

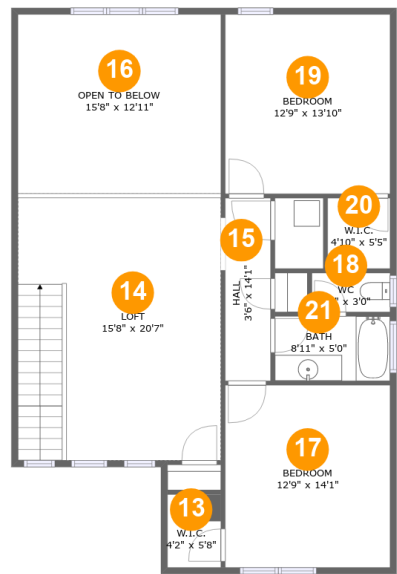
Home report

8735 Terracina Lake Drive, Citrus Park, Tampa, Hillsborough  
County, Florida, United States, 33625

#		Max Dimensions	sqft	Included
12	Foyer	11'1" x 12'1"	104 sq. ft	Yes

Home report

8735 Terracina Lake Drive, Citrus Park, Tampa, Hillsborough County, Florida, United States, 33625



Room dimensions

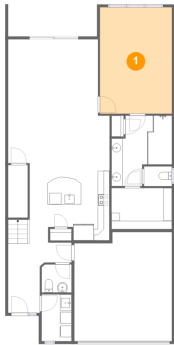
Floor 2

Total:914sqft   Excluded: 217sqft

#		Max Dimensions	sqft	Included
13	W.I.C.	4'2" x 5'8"	23 sq. ft	Yes
14	Loft	15'8" x 20'7"	323 sq. ft	Yes
15	Hall	3'6" x 14'1"	49 sq. ft	Yes
16	Open To Below	15'8" x 12'11"	217 sq. ft	No
17	Bedroom	12'9" x 14'1"	179 sq. ft	Yes
18	WC	6'0" x 3'0"	18 sq. ft	Yes
19	Bedroom	12'9" x 13'10"	176 sq. ft	Yes
20	W.I.C.	4'10" x 5'5"	26 sq. ft	Yes
21	Bath	8'11" x 5'0"	44 sq. ft	Yes

8735 Terracina Lake Drive, Citrus Park, Tampa, Hillsborough County, Florida, United States, 33625

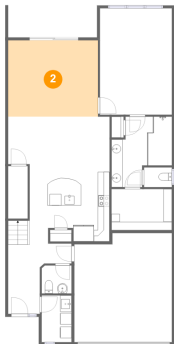
1 Floor 1 - Primary Bedroom



Max Dimensions: 12'8" x 18'8"  
Calculated Area: 236 sq. ft  
Included: Yes

Heated: Yes  
Finished: Yes  
Enclosed: Yes  
Contiguous: Yes  
Permitted: Yes  
Wet space: No  
Addition: No  
Conversion: No

2 Floor 1 - Living Room

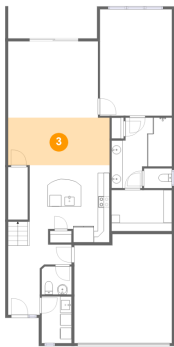


Max Dimensions: 15'9" x 13'5"  
Calculated Area: 211 sq. ft  
Included: Yes

Heated: Yes  
Finished: Yes  
Enclosed: Yes  
Contiguous: Yes  
Permitted: Yes  
Wet space: No  
Addition: No  
Conversion: No

8735 Terracina Lake Drive, Citrus Park, Tampa, Hillsborough County, Florida, United States, 33625

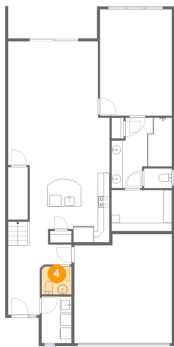
3 Floor 1 - Dining Area



Max Dimensions: 17'9" x 8'4"  
Calculated Area: 148 sq. ft  
Included: Yes

Heated: Yes  
Finished: Yes  
Enclosed: Yes  
Contiguous: Yes  
Permitted: Yes  
Wet space: No  
Addition: No  
Conversion: No

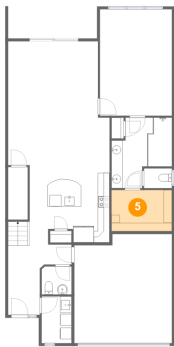
4 Floor 1 - WC



Max Dimensions: 5'3" x 4'11"  
Calculated Area: 26 sq. ft  
Included: Yes

Heated: Yes  
Finished: Yes  
Enclosed: Yes  
Contiguous: Yes  
Permitted: Yes  
Wet space: Yes  
Addition: No  
Conversion: No

5 Floor 1 - W.I.C.



Max Dimensions: 10'7" x 7'3"  
Calculated Area: 76 sq. ft  
Included: Yes

Heated: Yes  
Finished: Yes  
Enclosed: Yes  
Contiguous: Yes  
Permitted: Yes  
Wet space: No  
Addition: No  
Conversion: No

8735 Terracina Lake Drive, Citrus Park, Tampa, Hillsborough County, Florida, United States, 33625

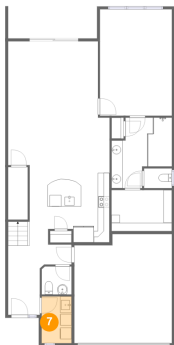
6 Floor 1 - WC



Max Dimensions: 4'11" x 3'6"  
Calculated Area: 17 sq. ft  
Included: Yes

Heated: Yes  
Finished: Yes  
Enclosed: Yes  
Contiguous: Yes  
Permitted: Yes  
Wet space: Yes  
Addition: No  
Conversion: No

7 Floor 1 - Laundry



Max Dimensions: 5'3" x 8'2"  
Calculated Area: 43 sq. ft  
Included: Yes

Heated: Yes  
Finished: Yes  
Enclosed: Yes  
Contiguous: Yes  
Permitted: Yes  
Wet space: No  
Addition: No  
Conversion: No

8 Floor 1 - Kitchen



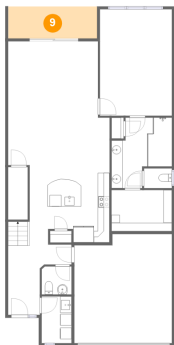
Max Dimensions: 14'0" x 13'11"  
Calculated Area: 181 sq. ft  
Included: Yes

Heated: Yes  
Finished: Yes  
Enclosed: Yes  
Contiguous: Yes  
Permitted: Yes  
Wet space: No  
Addition: No  
Conversion: No



8735 Terracina Lake Drive, Citrus Park, Tampa, Hillsborough County, Florida, United States, 33625

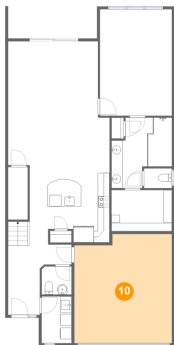
9 Floor 1 - Porch



Max Dimensions: 15'7" x 5'7"  
Calculated Area: 87 sq. ft  
Included: No

Heated: No  
Finished: Yes  
Enclosed: No  
Contiguous: Yes  
Permitted: Yes  
Wet space: No  
Addition: No  
Conversion: No

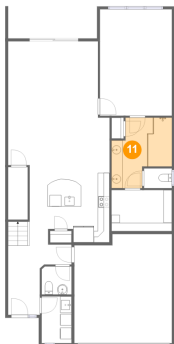
10 Floor 1 - Garage



Max Dimensions: 17'1" x 19'2"  
Calculated Area: 314 sq. ft  
Included: No

Heated: No  
Finished: No  
Enclosed: Yes  
Contiguous: Yes  
Permitted: Yes  
Wet space: No  
Addition: No  
Conversion: No

11 Floor 1 - Bath

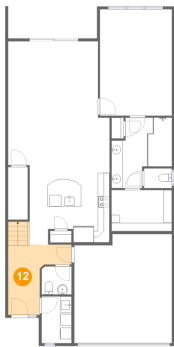


Max Dimensions: 10'7" x 12'4"  
Calculated Area: 101 sq. ft  
Included: Yes

Heated: Yes  
Finished: Yes  
Enclosed: Yes  
Contiguous: Yes  
Permitted: Yes  
Wet space: Yes  
Addition: No  
Conversion: No

8735 Terracina Lake Drive, Citrus Park, Tampa, Hillsborough County, Florida, United States, 33625

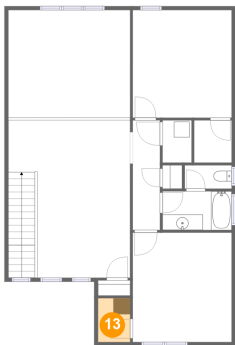
12 Floor 1 - Foyer



Max Dimensions: 11'1" x 12'1"  
Calculated Area: 104 sq. ft  
Included: Yes

Heated: Yes  
Finished: Yes  
Enclosed: Yes  
Contiguous: Yes  
Permitted: Yes  
Wet space: No  
Addition: No  
Conversion: No

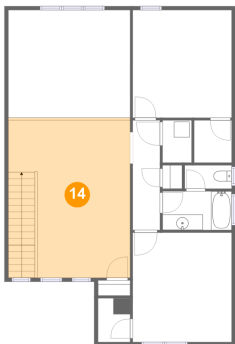
13 Floor 2 - W.I.C.



Max Dimensions: 4'2" x 5'8"  
Calculated Area: 23 sq. ft  
Included: Yes

Heated: Yes  
Finished: Yes  
Enclosed: Yes  
Contiguous: Yes  
Permitted: Yes  
Wet space: No  
Addition: No  
Conversion: No

14 Floor 2 - Loft

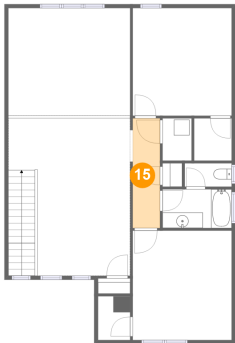


Max Dimensions: 15'8" x 20'7"  
Calculated Area: 323 sq. ft  
Included: Yes

Heated: Yes  
Finished: Yes  
Enclosed: Yes  
Contiguous: Yes  
Permitted: Yes  
Wet space: No  
Addition: No  
Conversion: No

8735 Terracina Lake Drive, Citrus Park, Tampa, Hillsborough County, Florida, United States, 33625

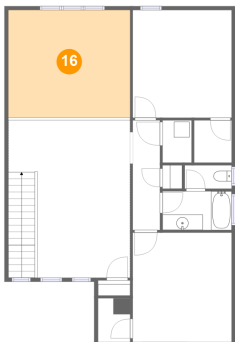
15 Floor 2 - Hall



Max Dimensions: 3'6" x 14'1"  
Calculated Area: 49 sq. ft  
Included: Yes

Heated: Yes  
Finished: Yes  
Enclosed: Yes  
Contiguous: Yes  
Permitted: Yes  
Wet space: No  
Addition: No  
Conversion: No

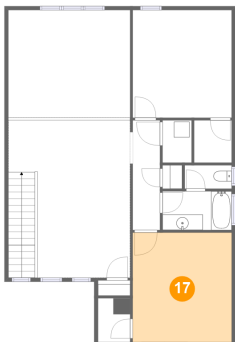
16 Floor 2 - Open To Below



Max Dimensions: 15'8" x 12'11"  
Calculated Area: 217 sq. ft  
Included: No

Heated: No  
Finished: No  
Enclosed: No  
Contiguous: Yes  
Permitted: No  
Wet space: No  
Addition: No  
Conversion: No

17 Floor 2 - Bedroom

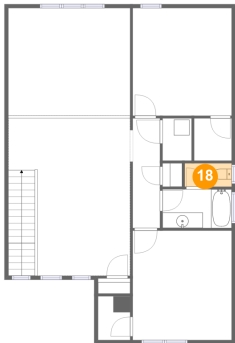


Max Dimensions: 12'9" x 14'1"  
Calculated Area: 179 sq. ft  
Included: Yes

Heated: Yes  
Finished: Yes  
Enclosed: Yes  
Contiguous: Yes  
Permitted: Yes  
Wet space: No  
Addition: No  
Conversion: No

8735 Terracina Lake Drive, Citrus Park, Tampa, Hillsborough County, Florida, United States, 33625

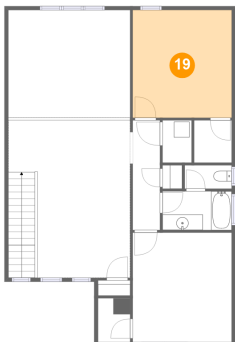
18 Floor 2 - WC



Max Dimensions: 6'0" x 3'0"  
Calculated Area: 18 sq. ft  
Included: Yes

Heated: Yes  
Finished: Yes  
Enclosed: Yes  
Contiguous: Yes  
Permitted: Yes  
Wet space: Yes  
Addition: No  
Conversion: No

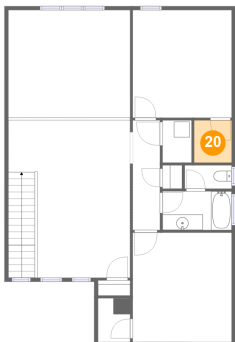
19 Floor 2 - Bedroom



Max Dimensions: 12'9" x 13'10"  
Calculated Area: 176 sq. ft  
Included: Yes

Heated: Yes  
Finished: Yes  
Enclosed: Yes  
Contiguous: Yes  
Permitted: Yes  
Wet space: No  
Addition: No  
Conversion: No

20 Floor 2 - W.I.C.

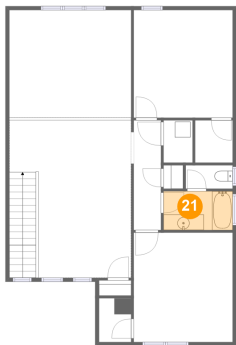


Max Dimensions: 4'10" x 5'5"  
Calculated Area: 26 sq. ft  
Included: Yes

Heated: Yes  
Finished: Yes  
Enclosed: Yes  
Contiguous: Yes  
Permitted: Yes  
Wet space: No  
Addition: No  
Conversion: No

8735 Terracina Lake Drive, Citrus Park, Tampa, Hillsborough  
County, Florida, United States, 33625

**21** Floor 2 - Bath



Max Dimensions: 8'11" x 5'0"  
Calculated Area: 44 sq. ft  
Included: Yes

Heated: Yes  
Finished: Yes  
Enclosed: Yes  
Contiguous: Yes  
Permitted: Yes  
Wet space: Yes  
Addition: No  
Conversion: No